

RYOBI 7-1/4 in. LASER CIRCULAR SAW – MODEL NO. CSB142LZ

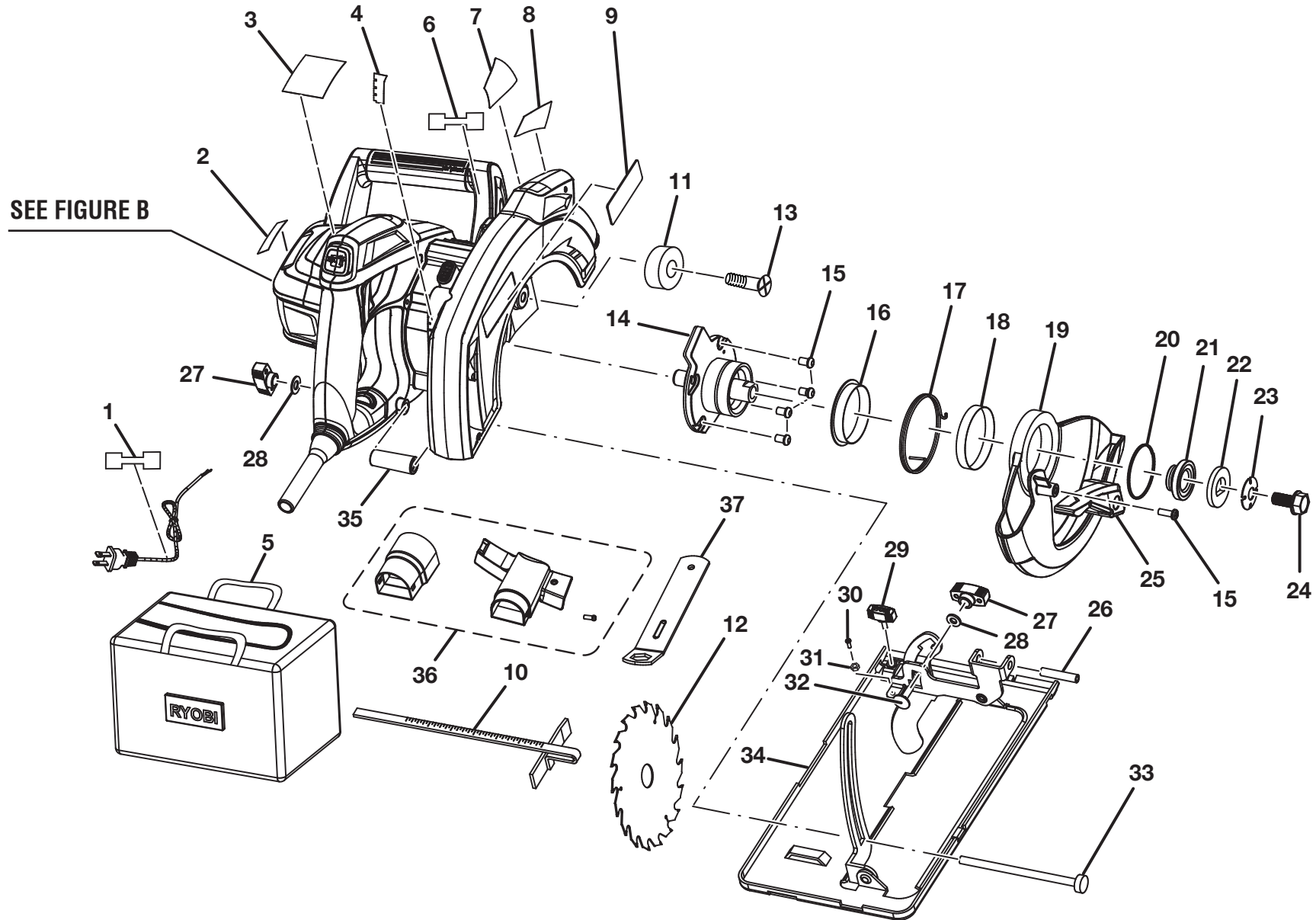


FIGURE A

## RYOBI 7-1/4 in. LASER CIRCULAR SAW – MODEL NO. CSB142LZ

The model number will be found on a label attached to the motor housing. Always mention the model number in all correspondence regarding your **CIRCULAR SAW** or when ordering repair parts.

### PARTS LIST (FIGURE A)

KEY NO.	PART NUMBER	DESCRIPTION	QTY	KEY NO.	PART NUMBER	DESCRIPTION	QTY
1	940221050	CORD TAG LABEL FOR CIRCULAR SAW..	1	20	680778002	RETAINING RING.....	1
2	940304502	LOGO LABEL (REAR) .....	1	21	680774010	INNER FLANGE BUSHING .....	1
3	940976261	DATA LABEL .....	1	22	680775001	OUTER BLADE WASHER .....	1
4	940266016	CUTTING DEPTH LABEL.....	1	23	680776001	BLADE WASHER .....	1
5	902164001	TOOL BAG.....	1	24	660124001	BLADE BOLT .....	1
6	941361002	CORD TAG LABEL FOR LASER .....	1	25	516871002	LOWER BLADE GUARD .....	1
7	940976270	LASER DATA LABEL .....	1	26	680980003	ROLL PIN.....	1
8	940221022	LASER WARNING LABEL.....	1	27	301124006	ADJUST DEPTH KNOB .....	2
9	940304501	LOGO LABEL (FRONT).....	1	28	680771002	WASHER.....	2
10	690119005	RIP GUIDE .....	1	29	301124007	EDGE GUIDE KNOB .....	1
11	562802001	BUMPER.....	1	30	660112006	SCREW (8-32 x 9 mm).....	1
12	680783014	BLADE (24T) .....	1	31	660106007	HEX NUT (8-32) .....	1
13	661548001	SCREW (M6 x 1 mm).....	1	32	660104010	CARRIAGE BOLT (1/4-20 x 5/8 in.).....	1
14	200677001	LOWER BLADE GUARD SUPPORT w/OUTPUT SHAFT AND BEARING ASSEMBLY .....	1	33	660104002	CARRIAGE BOLT (1/4-20 x 3-3/4 in.) .....	1
15	660311006	SCREW (10-24 x 1/2 in.).....	5	34	300530028	BASE ASSEMBLY .....	1
16	514310001	SLEEVE.....	1	35	550423004	SPACER.....	1
17	692039001	TORSION SPRING.....	1	36	200673001	VACUUM ADAPTER ASSEMBLY.....	1
18	632417001	SLEEVE FOR LOWER GUARD .....	1	37	630805010	WRENCH (14 mm) .....	1
19	641515001	LOWER GUARD.....	1		<b>NOT SHOWN</b>		
					987000328	OPERATOR'S MANUAL (961022009)	
					11-18-11		
					(REV:09)		

**⚠ WARNING: Improper repair of a double insulated tool can result in damages to the double insulation system possibly causing electrical shock or electrocution. Any repairs requiring disassembly of your tool requires safety testing and should only be performed by a Ryobi Authorized Service Center. For the service center nearest you call 1-800-525-2579.**

RYOBI 7-1/4 in. LASER CIRCULAR SAW – MODEL NO. CSB142LZ

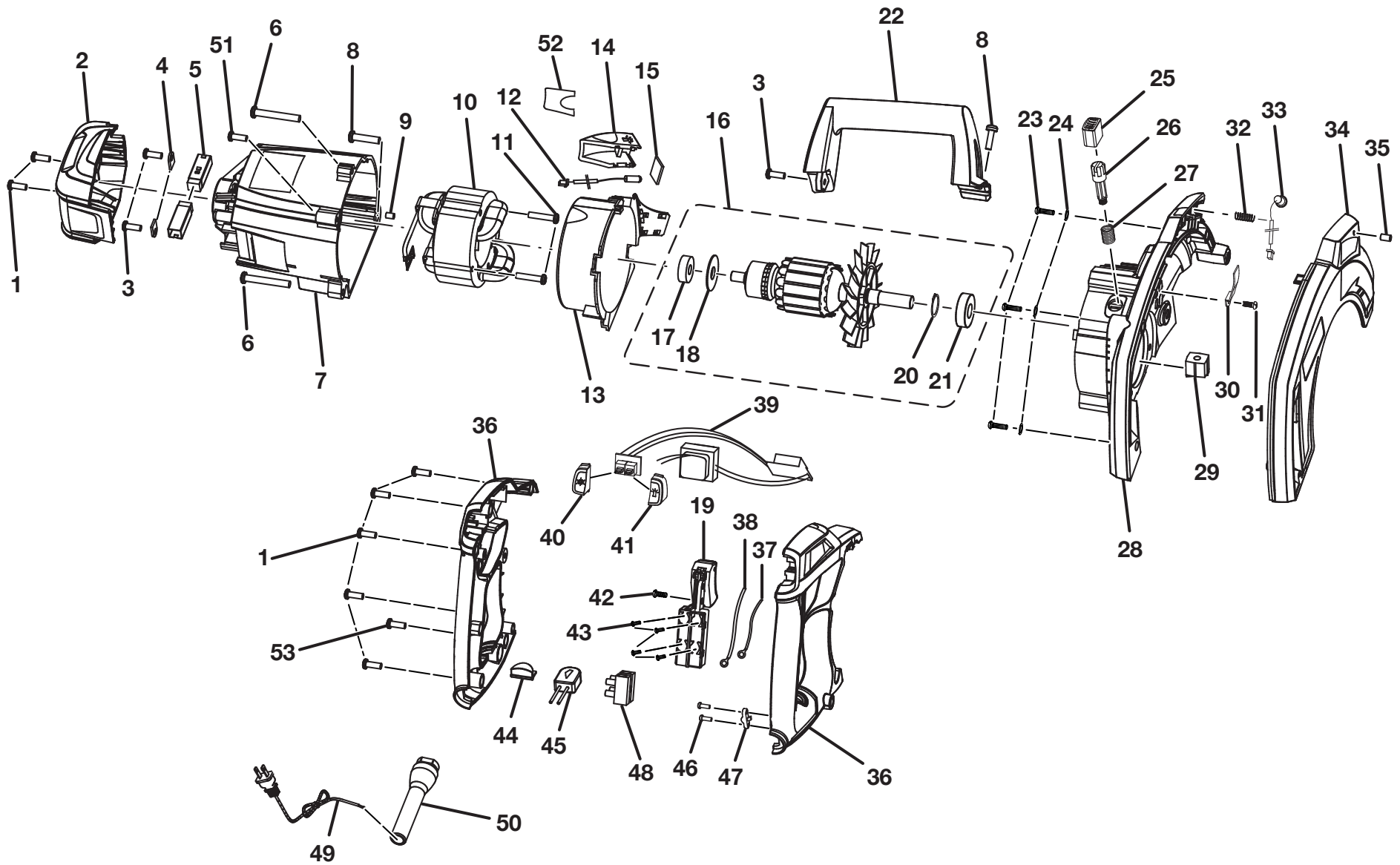


FIGURE B

## RYOBI 7-1/4 in. LASER CIRCULAR SAW – MODEL NO. CSB142LZ

The model number will be found on a label attached to the motor housing. Always mention the model number in all correspondence regarding your **CIRCULAR SAW** or when ordering repair parts.

### PARTS LIST (FIGURE B)

KEY NO.	PART NUMBER	DESCRIPTION	QTY	KEY NO.	PART NUMBER	DESCRIPTION	QTY
1	6620805	SCREW (M4 x 16 mm).....	7	27	680773001	SPRING .....	1
2	516878001	END CAP .....	1	28	200675001	UPPER BLADE GUARD SUPPORT.....	1
3	660140002	SCREW (8-16 x 12.7 mm) .....	3	29	690427002	RACK SHAFT LOCK.....	1
4	630801001	CLAMP .....	2	30	632391001	WIRE CLAMP .....	1
5	290075001	BRUSH TUBE ASSEMBLY .....	2	31	660312001	SCREW (8-32 x 3/8 in.).....	1
6	660311005	SCREW (10-24 x 1-1/8 in.) .....	2	32	672017001	SPRING .....	1
7	516877004	MOTOR HOUSING .....	1	33	302836001	LASER ASSEMBLY.....	1
8	660311004	SCREW (10-24 x 3/4 in.).....	2	34	641223001	UPPER BLADE GUARD COVER .....	1
9	550339001	RUBBER PLUG .....	1	35	660859002	SCREW (M4 x 8 mm).....	1
10	741591001	FIELD ASSEMBLY .....	1	36	200676001	HANDLE ASSEMBLY.....	1
11	660101002	SCREW (M0.170 x 1.875 in.).....	2	37	290061175	LEAD (BLACK) .....	1
12	290139037	LED ASSEMBLY .....	1	38	290061176	LEAD (WHITE).....	1
13	516923001	BAFFLE.....	1	39	280010150	CIRCUIT BOARD ASSEMBLY .....	1
14	516924001	LED COVER.....	1	40	516913001	LASER GUIDE BUTTON.....	1
15	517009001	LENS.....	1	41	516914001	LED WORKLIGHT BUTTON .....	1
16	202001001	ARMATURE ASSEMBLY (INC. KEY NOS. 17, 18, 20 AND 21).....	1	42	660118001	SCREW (8-18 x 3/8 in.).....	1
17	680966004	BALL BEARING (608ZZ).....	1	43	660320001	SCREW (M3.5 x 7 mm).....	4
18	681037001	CUPPED WASHER.....	1	44	516915001	INDICATOR COVER.....	1
19	760677004	SWITCH.....	1	45	290251012	LIVE INDICATOR.....	1
20	680336001	RETAINING RING .....	1	46	6620614	SCREW (M3.5 x 14 mm).....	2
21	681053001	BALL BEARING (6001 2RS C3).....	1	47	590501003	CORD CLAMP .....	1
22	516879001	FRONT HANDLE.....	1	48	690331002	TERMINAL BLOCK.....	1
23	660212047	SCREW (M4 x 14.5 mm).....	3	49	730372010	POWER CORD .....	1
24	670030004	SPRING WASHER .....	3	50	590274005	BEND RELIEF .....	1
25	516870001	SPINDLE LOCK BUTTON.....	1	51	660208049	SCREW (M4 x 22 mm).....	1
26	550421007	SHAFT SPINDLE LOCK.....	1	52	900667003	GASKET.....	1
				53	6620801	SCREW (M4 x 12 mm).....	1

**⚠ WARNING:** Improper repair of a double insulated tool can result in damages to the double insulation system possibly causing electrical shock or electrocution. Any repairs requiring disassembly of your tool requires safety testing and should only be performed by a Ryobi Authorized Service Center. For the service center nearest you call 1-800-525-2579.