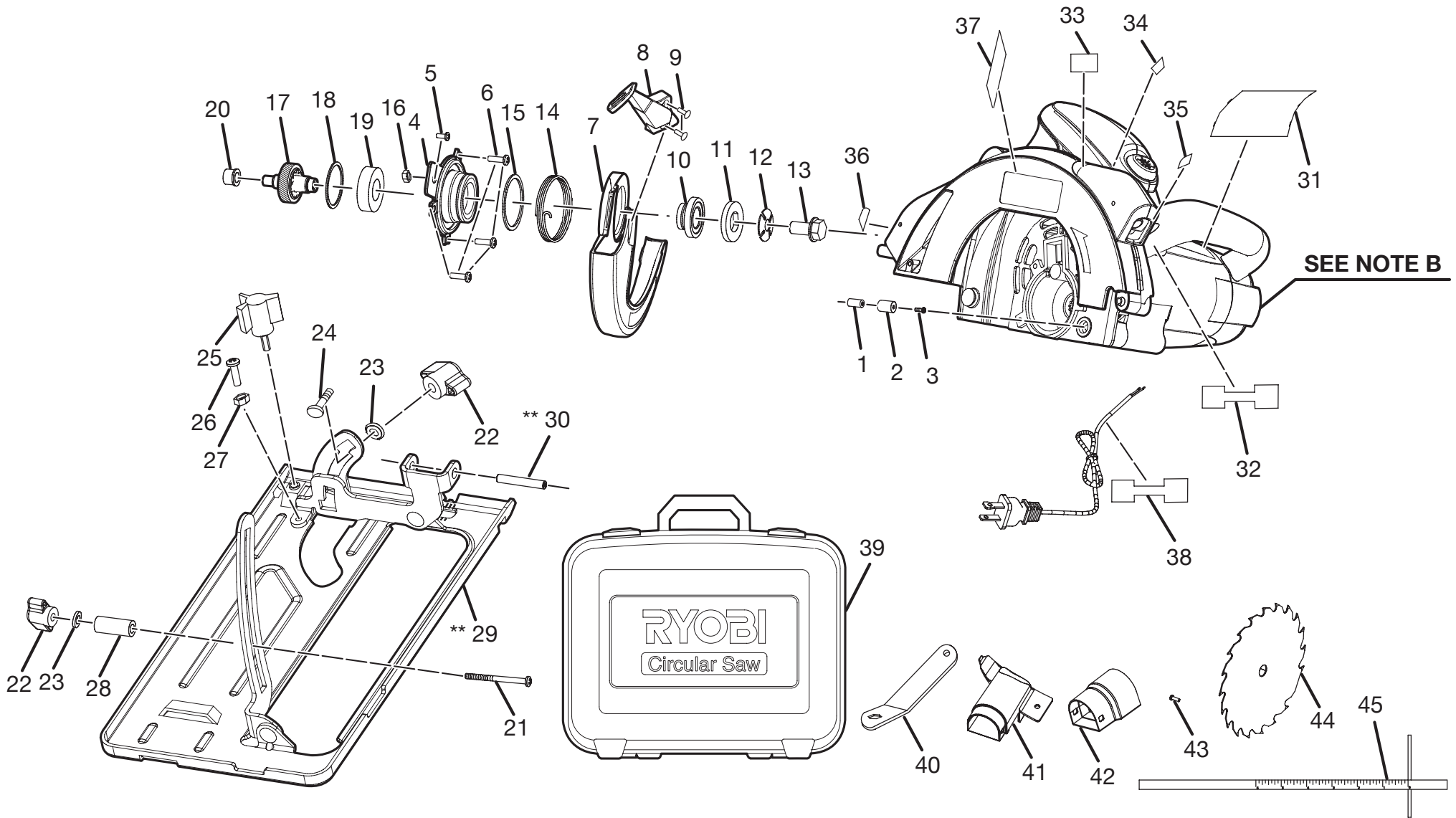


RYOBI 7-1/4 in. LASER CIRCULAR SAW – MODEL NO. CSB141LZ



SEE NOTE B

**\*\* Note A: Changes start with  
Date Code 0652 and  
Serial Number 78296**

**RYOBI 7-1/4 in. LASER CIRCULAR SAW – MODEL NO. CSB141LZ**

The model number will be found on a label attached to the motor housing. Always mention the model number in all correspondence regarding your **CIRCULAR SAW** or when ordering repair parts.

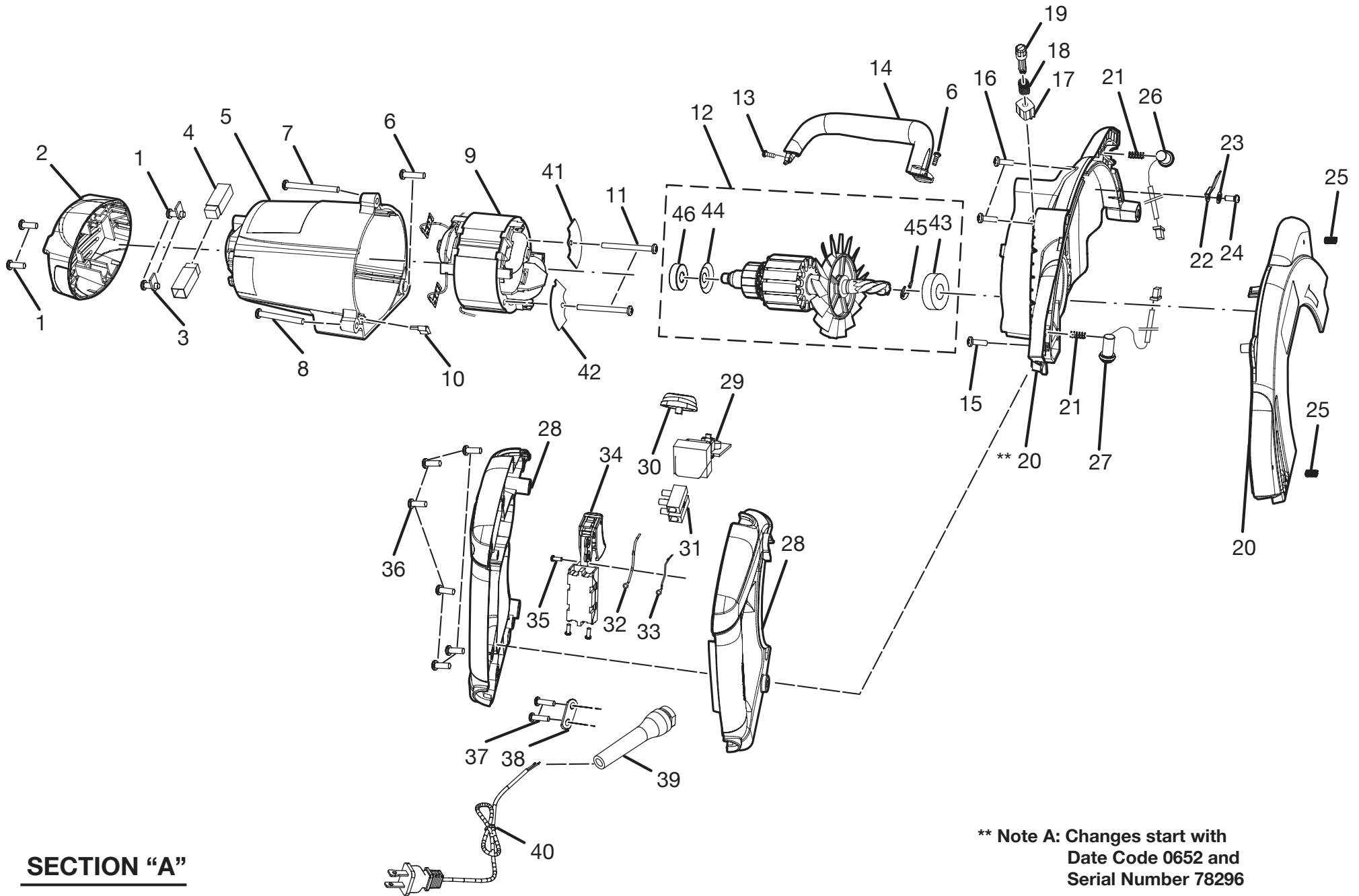
**PARTS LIST**

KEY NO.	PART NUMBER	DESCRIPTION	QTY	KEY NO.	PART NUMBER	DESCRIPTION	QTY
1	690500001	Bumper Support .....	1	26	660112001	Screw (#8-32 x 9 mm, Pan Hd.) .....	1
2	560844001	Rubber Bumper .....	1	27	660106001	Hex Nut (3 mm) .....	1
3	660018007	Screw (M5 x 40 mm ) .....	1	28	5542302	Spacer .....	1
4	641111002	Lower Guard Support .....	1	29	** 300530022	Base Assembly.....	1
5	6621202	Screw (M4 x 10 mm, Pan Hd.) .....	1		300530014	Base Assembly.....	1
6	660312001	Screw (#8-32 x 3/8 In., Pan Hd.).....	3	30	** 680980003	Roll Pin .....	1
7	641050002	Lower Blade Guard.....	1		6898001	Roll Pin .....	1
8	590180002	Handle.....	1	31	940077075	Data Label .....	1
9	660118001	Screw (#8-18 x 3/8 In., Pan Hd.).....	2	32	940230136	Warning Label.....	1
10	680774001	Inner Flange Bushing.....	1	33	940298012	Spindle Lock Decal .....	1
11	680775001	Outer Blade Washer.....	1	34	940214107	Laser Data Label .....	1
12	680776001	Spring Washer .....	1	35	940230127	Warning Label (Left).....	1
13	660124001	Blade Bolt .....	1	36	940230128	Warning Label (Right) .....	1
14	671985001	Torsion Spring.....	1	37	940051046	Logo Label .....	1
15	680778001	External Retaining Ring .....	1	38	940230137	Warning Label .....	1
16	680022003	Hex Nut (M4 x 3.2 mm).....	1	39	300517101	Carrying Case.....	1
17	300003018	Output Shaft Assembly.....	1	40	630805001	Wrench .....	1
18	680767001	Retaining Ring .....	1	41	551008002	Vacuum Adapter.....	1
19	680769001	Ball Bearing (6003LIB) .....	1	42	550631002	Vacuum Adapter.....	1
20	680801001	Sleeve Bearing.....	1	43	660198001	Screw (6-32 x 9.5 mm, Pan Hd.) .....	1
21	660104002	Carriage Bolt.....	1	44	680783009	Blade .....	1
22	5526604	Knob Adjustment .....	2	45	690119005	Rip Guide.....	1
23	680771001	Washer.....	2		983000827	Operator's Manual (960223674)	
24	660104001	Carriage Bolt.....	1		2-14-12		
25	550828004	Knob-Bolt .....	1		(REV:04)		

**NOTE B:** The assembly shown represents an important part of the double insulated system. To avoid the possibility of alteration or damage to the System, service should be performed by your nearest Ryobi repair center. Contact your nearest Ryobi retail store for service center information.

\*\* NOTE A : CHANGES START WITH DATE CODE 0652 AND SERIAL NUMBER 78296

RYOBI 7-1/4 in. LASER CIRCULAR SAW – MODEL NO. CSB141LZ



**RYOBI 7-1/4 in. LASER CIRCULAR SAW – MODEL NO. CSB141LZ**

The model number will be found on a label attached to the motor housing. Always mention the model number in all correspondence regarding your **CIRCULAR SAW** or when ordering repair parts.

**PARTS LIST FOR SECTION “A”**

KEY NO.	PART NUMBER	DESCRIPTION	QTY	KEY NO.	PART NUMBER	DESCRIPTION	QTY
1	6614001	Screw (8-16 x 12 mm, Pan Hd.)	4	23	670030005	Spring Washer	1
2	5532002	End Cap	1	24	6621205	Screw (M4 x 8 mm, Pan Hd.)	1
3	630801001	Brush Tube Clamp	2	25	660859001	Set Screw (M4 x 10 mm, Pan Hd.)	2
4	290075001	Brush Tube Assembly	2	26	200426001	Front Laser Assembly	1
5	5531904	Motor Housing	1	27	200427001	Rear Laser Assembly	1
6	660311001	Screw (10-24 x 3/4 In., Pan Hd.)	2	28	200422001	Handle Assembly	1
7	660311003	Screw (10-24 x 36 mm, Pan Hd.)	1	29	280013068	Circuit Board Assembly	1
8	660311002	Screw (10-24 x 1-1/8 In., Pan Hd.)	1	30	514036001	Laser Switch Button	1
9	740769001	Field	1	31	690331002	Terminal Block	1
10	5579301	Wire Holder	1	32	290061077	Receptacle & Black Lead w/ Terminal	1
11	660101003	Screw (1/8 x 2-1/8 In., Pan Hd.)	2	33	290061078	Receptacle & White Lead w/ Terminal	1
12	200216016	Armature Assembly (Inc. Key Nos. 43-46)	1	34	760405002	Switch	1
13	6631303	Screw (8-16 x 15.5 mm, Ph)	1	35	660118001	Screw (#8-18 x 3/8 In., Pan Hd.)	1
14	5532101	Assist Handle	1	36	6620805	Screw (M4 x 16 mm)	6
15	6621211	Screw (M4 x 12 mm)	1	37	6620614	Screw (M3.5 x 14 mm)	2
16	6621909	Screw (M5 x 14 mm)	2	38	590924001	Cord Clamp	1
17	6889601	Gear Rack	1	39	590274005	Bend Relief	1
18	680773001	Spring	1	40	730377023	Power Cord	1
19	550421003	Gear Rack Shaft	1	41	631297001	Right Baffle Plate	1
20	** 300294060	Upper Blade Guard Assembly	1	42	631298001	Left Baffle Plate	1
	300294041	Upper Blade Guard Assembly	1	43	681053001	Ball Bearing (6001 2RS C3)	1
21	672017001	Spring	2	44	681037001	Cupped Washer	1
22	631405001	Wire Clamp	1	45	982897016	Retaining Ring	1
				46	680966002	Ball Bearing (608ZZ)	1

**SECTION “A” REPRESENTS AN IMPORTANT PART OF THE DOUBLE INSULATED SYSTEM OF THIS TOOL. ANY REPAIR TO THIS TOOL REQUIRES DIELECTRIC TESTING TO INSURE CUSTOMER SAFETY AND TO COMPLY WITH COMPANY REQUIREMENTS.**

**\*\* NOTE A: CHANGES START WITH DATE CODE 0652 AND SERIAL NUMBER 78296**