

RYOBI 7-1/4 in. CIRCULAR SAW – MODEL NUMBER CSB132L

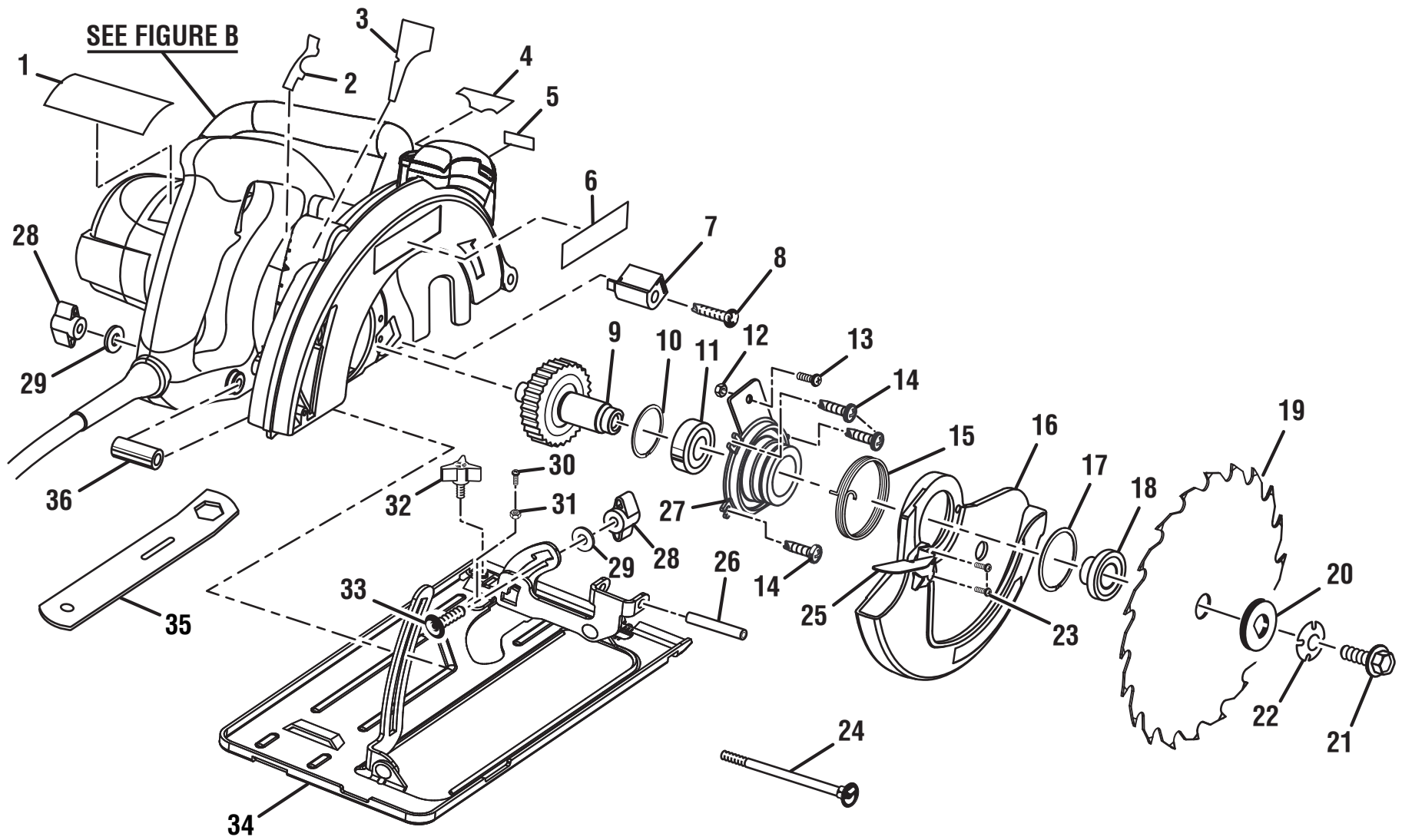


FIGURE A

**RYOBI 7-1/4 in. CIRCULAR SAW – MODEL NUMBER CSB132L**

The model number will be found on a label attached to the motor housing. Always mention the model number in all correspondence regarding your **CIRCULAR SAW** or when ordering repair parts.

**PARTS LIST  
(FIGURE A)**

KEY NO.	PART NUMBER	DESCRIPTION	QTY	KEY NO.	PART NUMBER	DESCRIPTION	QTY
1	940045081	Data Label.....	1	20	680775001	Outer Blade Washer.....	1
2	940298012	Spindle Lock Decal.....	1	21	660124001	Blade Screw.....	1
3	940266003	Cutting Depth Label.....	1	22	680776001	Spring Washer .....	1
4	940045082	Laser Data Label.....	1	23	660118001	Screw (8-18 x 3/8 in., Pan Hd.).....	2
5	940299474	Laser Warning Label.....	1	24	660104004	Carriage Bolt (1/4-20 x 4 in.).....	1
6	940304082	Logo Label .....	1	25	590180002	Handle Lever.....	1
7	560648001	Rubber Bumper .....	1	26	680980003	Roll Pin.....	1
8	660310001	Screw (8-32 x 3/4 in., Fil Hd.) .....	1	27	6447902	Lower Guard Support .....	1
9	300003036	Output Shaft Assembly.....	1	28	5526604	Adjustment Knob .....	2
10	680767001	Retaining Ring .....	1	29	680771001	Washer (OD 5/8 in.).....	2
11	680769001	Ball Bearing (6003 LLB) .....	1	30	660112001	Screw (8-32 x 9 mm, Pan Hd.).....	1
12	680022003	Hex Nut (M4 x 3.2 mm).....	1	31	660106001	Hex Nut (3 mm).....	1
13	6621205	Screw (M4 x 8 mm, Pan Hd.).....	1	32	550828004	Edge Guide Knob .....	1
14	660312001	Screw (8-32 x 3/8 in., Fil Hd.) .....	3	33	660104001	Carriage Bolt (1/4-20 x 1 in.).....	1
15	680772001	Torsion Spring.....	1	34	300530024	Base Assembly .....	1
16	6447602	Lower Blade Guard.....	1	35	630805001	Wrench.....	1
17	680778001	Retaining Ring .....	1	36	5542303	Spacer .....	1
18	680774001	Inner Flange Bushing.....	1		987000113	Operator's Manual (960931113)	
19	681157001	Blade (20T).....	1		2-14-12		
					(Rev:02)		

**NOTE: Improper repair of a double insulated tool can result in damage to the double insulation system possibly causing electrical shock or electrocution. Any repairs requiring disassembly of your tool requires safety testing and should only be performed by a Ryobi Authorized Service Center. For the service center nearest you call 1-800-525-2579.**

RYOBI 7-1/4 in. CIRCULAR SAW – MODEL NUMBER CSB132L

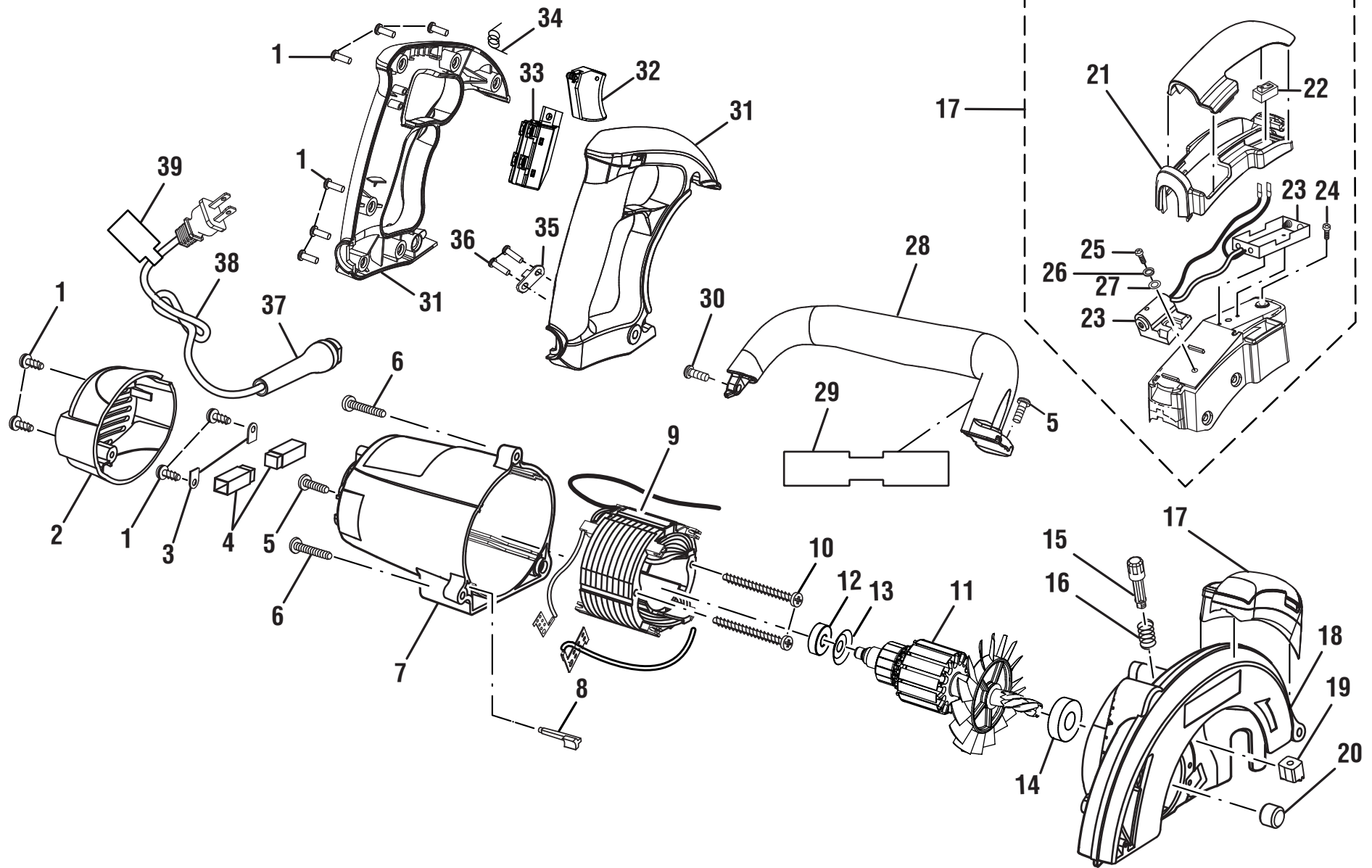


FIGURE B

## RYOBI 7-1/4 in. CIRCULAR SAW – MODEL NUMBER CSB132L

The model number will be found on a label attached to the motor housing. Always mention the model number in all correspondence regarding your **CIRCULAR SAW** or when ordering repair parts.

### PARTS LIST (FIGURE B)

KEY NO.	PART NUMBER	DESCRIPTION	QTY	KEY NO.	PART NUMBER	DESCRIPTION	QTY
1	6614001	Screw (8-16 x 1/2 in., Pan Hd.).....	10	21	200314001	Laser Guide Housing Assembly .....	1
2	380320003	End Cap .....	1	22	301246001	Switch .....	1
3	630801001	Clamp .....	2	23	301245001	Laser/Battery Assembly.....	1
4	290075001	Brush Tube Assembly .....	2	24	660212034	Screw (M4 x 8 mm, Pan Hd.).....	1
5	660311001	Screw (10-24 x 3/4 in., Pan Hd.).....	2	25	660212035	Screw (M4 x 10 mm, Pan Hd.).....	1
6	660311002	Screw (10-24 x 1-1/8 in., Pan Hd.) .....	2	26	671665001	Lock Washer .....	1
7	5531904	Motor Housing .....	1	27	671664001	Washer .....	1
8	5579301	Wire Holder .....	1	28	5532101	Handle.....	1
9	200215012	Field Assembly.....	1	29	941361002	Hang Tag.....	1
10	660101004	Screw (8-10 x 2-1/2 in., Pan Hd.) .....	2	30	6631303	Screw (8-16 x 15.5 mm, Pan Hd.).....	1
11	200216023	Armature Assembly (Inc. Key Nos. 12-14).....	1	31	200235011	Handle Assembly.....	1
12	680141020	Ball Bearing (608 zz) .....	1	32	5532203	Trigger .....	1
13	6879901	Washer .....	1	33	7621301	Switch .....	1
14	681053001	Ball Bearing (6001 2RS C3) .....	1	34	6880001	Torsion Spring.....	1
15	5542103	Gear Rack Shaft .....	1	35	6933702	Cord Clamp .....	1
16	680773001	Spring .....	1	36	6620614	Screw (M3.5 x 14 mm).....	2
17	301122001	Laser Assembly (Inc. Key Nos. 21-27).....	1	37	5927401	Bend Relief .....	1
18	640544007	Upper Blade Guard.....	1	38	730377031	Power Cord .....	1
19	6889601	Gear Rack.....	1	39	941361001	Cord Tag Label.....	1
20	680801001	Sleeve Bearing.....	1				

**NOTE: Improper repair of a double insulated tool can result in damage to the double insulation system possibly causing electrical shock or electrocution. Any repairs requiring disassembly of your tool requires safety testing and should only be performed by a Ryobi Authorized Service Center. For the service center nearest you call 1-800-525-2579.**