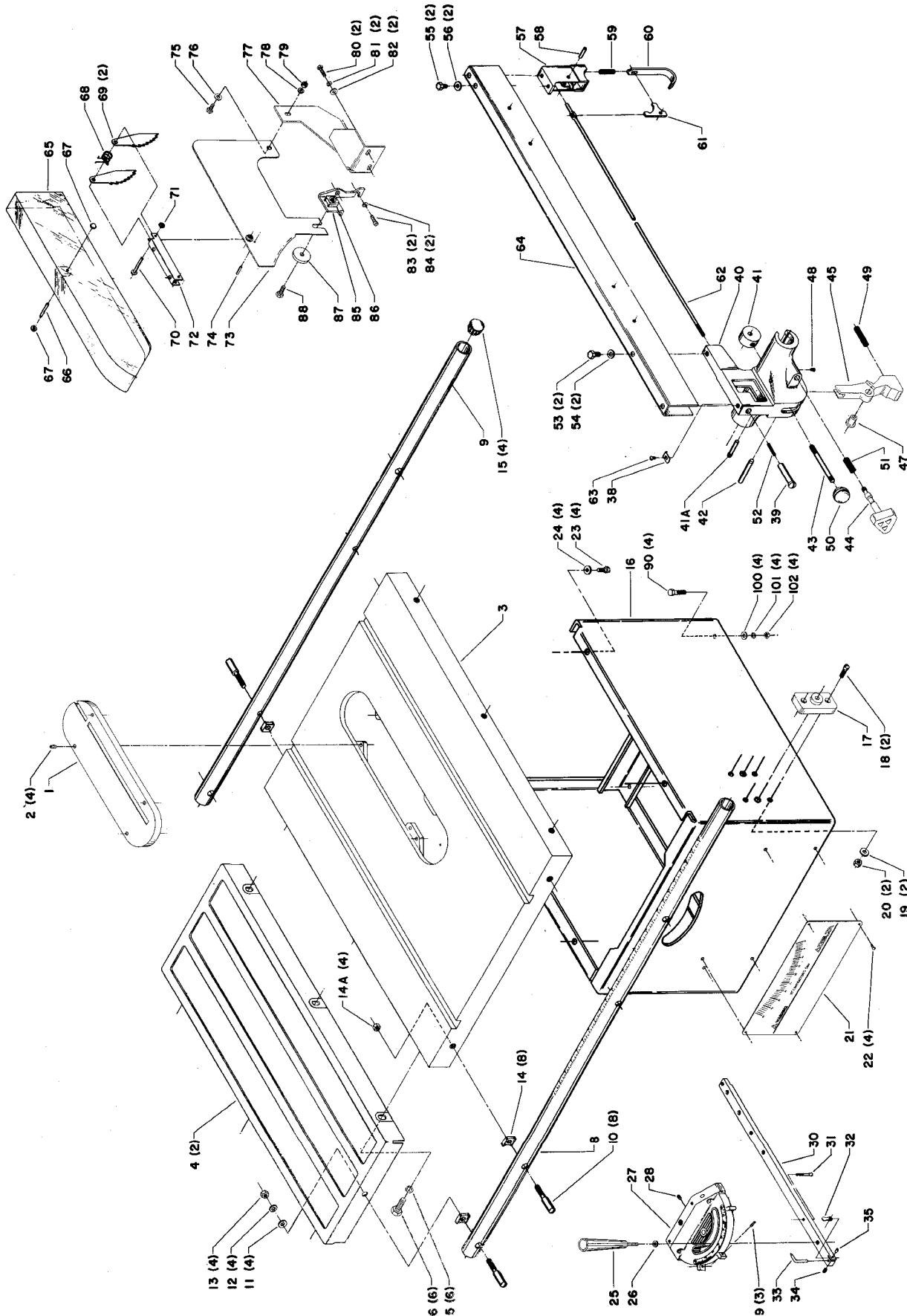
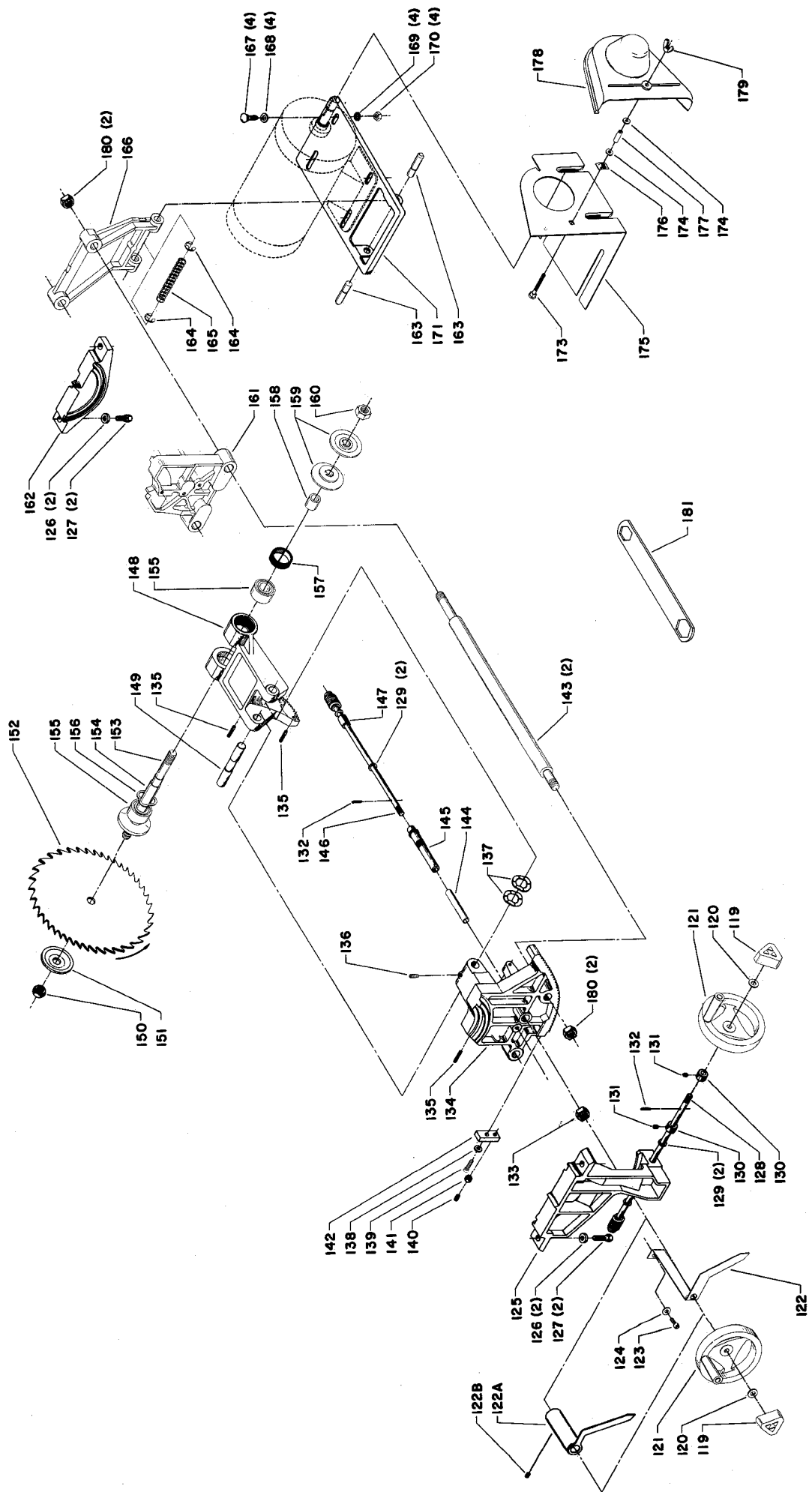


10" CONTRACTOR'S SAW (SN88J0001 THRU 90C12579)



REPLACEMENT PARTS

| REF. NO. | PART NO. | DESCRIPTION | REF. NO. | PART NO. | DESCRIPTION |
|----------|-----------------|----------------------------------|----------|---------------------|---------------------------------|
| 1 | 34-154 | Table Insert, Incl: | * | 34-412 | Complete Guard Assy, Const. of: |
| 2 | 901-04-461-5297 | Pellet Lok Screw | * | 1086935 | Blade Guard, Const. of: |
| 3 | 422-19-091-0004 | Table | 65 | 1086334 | "See Thru Guard" |
| 4 | 34-862 | Extension Wing, Incl: | 66 | 1087811 | Pin |
| 5 | 904-02-010-1716 | 7/16" Lockwasher | 67 | 1086388 | Push Nut Cap |
| 6 | 901-01-060-0664 | 7/16-10 x 1" Hex Head Screw | 68 | 1086353 | Spring |
| 8 | 422-04-055-0001 | Front Guide Rail | 69 | 422-16-047-0001 | Kick Back Finger |
| 9 | 422-04-055-0002 | Rear Guide Rail | 70 | 422-16-071-0002 | Pin |
| 10 | 422-04-112-5007 | 3/4-24 Special Screw | 71 | 1086387 | Push Nut |
| 11 | 904-01-010-1615 | 3/8" Flat Washer | 72 | 1086337 | Pivot Bracket |
| 12 | 904-02-020-1704 | 3/8" Lockwasher | 73 | 1086911 | Splitter w/Bushing |
| 13 | 902-01-010-1207 | 3/8-24 Hex Nut | 74 | 905-01-010-6729 | 5/12 x 11/16" Roll Pin |
| 14 | 422-04-104-0001 | Spacer | 75 | 901-01-060-0611 | 1/4-20 x 1/2" Hex Head Screw |
| 14A | 902-01-010-1207 | 3/8-24 Hex Nut | 76 | 904-01-010-1614 | 1/4" Flat Washer |
| 15 | 961-01-010-7462 | Plug | 77 | 422-19-089-0001 | Splitter Support Bracket |
| 16 | 1087906 | Cabinet Assy, Incl: | 78 | 904-02-020-1702 | 1/4" Lockwasher |
| 17 | 422-03-089-0002 | Support | 79 | 902-01-120-1034 | 1/4-20 Hex Nut |
| 18 | 901-02-050-0704 | 5/16-18 x 5/8" Fil Head Screw | 80 | 901-01-060-0626 | 1/4-20 x 3/4" Hex Head Screw |
| 19 | 904-01-010-1620 | 5/16" Flat Washer | 81 | 904-02-020-1702 | 1/4" Lockwasher |
| 20 | 902-01-010-1300 | 5/16-18 Hex Nut | 82 | 904-01-010-1614 | 1/4" Flat Washer |
| 21 | 422-19-132-0001 | Nameplate w/Scale | 83 | 901-03-010-3309 | 1/4-20 x 5/8" Soc Hd Screw |
| 22 | 1087794 | Rivet | 84 | 904-02-020-1702 | 1/4" Lockwasher |
| 23 | 901-01-060-0606 | 5/16-18 x 5/8" Hex Head Screw | 85 | 422-04-314-0017 | Bracket, Incl: |
| 24 | 904-01-010-1620 | 5/16" Flat Washer | 86 | 902-03-013-1063 | Tinnerman Nut |
| 25 | 422-02-060-0003 | Handle | 87 | 422-03-072-0001 | Plate |
| * | 34-895 | Miter Gage, Const. of: | 88 | 901-01-060-0649 | 5/16-18 x 1" Hex Head Screw |
| 26 | 904-07-010-5555 | Fiber Washer | 90 | 901-01-060-0649 | 5/16-18 x 1" Hex Head Screw |
| 27 | 422-01-050-0003 | Miter Gage Body | 100 | 904-01-010-1620 | 5/16" Flat Washer |
| 28 | 901-04-410-4561 | 1/4-28 x 1/4" Headless Set Screw | 101 | 904-02-010-1703 | 5/16" Lockwasher |
| 29 | 901-04-150-9428 | #8-32 x 1/2" Hex Soc Set Screw | 102 | 902-01-010-1300 | 5/16-18 Hex Nut |
| 30 | 422-04-004-0001 | Guide Bar | ** | 424-01-014-0002 | Switch bracket |
| 31 | 422-01-112-0001 | Pivot Screw | ** | 438-01-004-0054 | Cable Tie |
| 32 | 422-01-088-0002 | Stop Link | ** | 438-01-628-0004 | Switch |
| 33 | 422-01-075-0001 | Pointer | | | |
| 34 | 905-04-061-2351 | Steel Pin | * | NOT SHOWN ASSEMBLED | |
| 35 | 901-04-410-4561 | 1/4-28 x 1/4" Headless Set Screw | ** | NOT SHOWN | |
| * | 422-04-343-0008 | Rip Fence, Const. of: | | | |
| 38 | 951-01-020-7849 | Pointer | | | |
| 39 | 422-04-105-5001 | Sleeve | | | |
| * | 422-04-312-5008 | Front Clamp, Const. of: | | | |
| 40 | 422-04-012-5005 | Front Clamp Body | | | |
| 41 | 422-04-042-5002 | Eccentric | | | |
| 41A | 422-04-071-5005 | Pin | | | |
| 42 | 422-04-071-5004 | Pin | | | |
| 43 | 422-04-111-5002 | Stud | | | |
| 44 | 422-04-351-5002 | Knob and Pinion Assembly | | | |
| 45 | 422-04-327-5002 | Front Clamp Shoe, Incl: | | | |
| 47 | 904-08-021-4550 | Rubber Bushing | | | |
| 48 | 901-04-160-6218 | 1/4-20 x 1/4" Soc Set Screw | | | |
| 49 | 928-01-041-4123 | Spring | | | |
| 50 | 931-01-011-4091 | Ball Handle | | | |
| 51 | 928-01-201-5898 | Spring | | | |
| 52 | 928-01-021-5301 | Spring | | | |
| 53 | 901-01-060-0677 | 3/8-28 x 1/2" Hex Head Screw | | | |
| 54 | 904-01-033-1451 | Washer | | | |
| 55 | 901-01-060-0605 | 5/16-18 x 1/2" Hex Head Screw | | | |
| 56 | 904-01-010-1620 | 5/16" Flat Washer | | | |
| 57 | 422-04-010-5002 | Block | | | |
| 58 | 905-04-071-4459 | Pin | | | |
| 59 | 928-01-041-4118 | Spring | | | |
| 60 | 422-04-027-0001 | Clamp Hook | | | |
| 61 | 422-04-067-5001 | Lever | | | |
| 62 | 422-04-108-5001 | Rod | | | |
| 63 | 901-02-010-0551 | #10-32 x 1/4" Round Hd Screw | | | |
| 64 | 422-04-343-5002 | Fence Body | | | |



REPLACEMENT PARTS

| REF. NO. | PART NO. | DESCRIPTION | REF. NO. | PART NO. | DESCRIPTION |
|----------|-----------------|--|---------------------------------|---------------------|-----------------------------------|
| 119 | 422-03-138-0001 | Knob | 158 | 422-19-104-0002 | Spacer |
| 120 | 904-07-020-5556 | Washer | 159 | 422-19-130-0001 | Pulley Half |
| 121 | 1086491 | Handwheel | 160 | 902-01-020-1226 | 5/8-18 Hex Nut |
| 122 | 422-19-075-0001 | Pointer (Current Models Only, For Units w/Serial No. 89B09204 and higher) | 161 | 422-19-095-0003 | Rear Trunnion |
| 122A | 1087911 | Pointer Assy, Incl: (Early Models Only, For Units w/Serial No. 89B09203 and lower) | 162 | 422-02-014-0010 | Rear Trunnion Bracket |
| 122B | 901-04-150-0208 | For Units w/Serial No. 89B09203 and lower) | 163 | 422-19-071-0001 | Pin |
| 123 | 901-03-010-3309 | 1/4-20 x 1/4" Socket Set Screw | 164 | 904-15-012-0052 | 1/2" Ext. Retaining Ring |
| 124 | 904-01-010-1614 | 1/4-20 x 5/8" Socket Head Screw | 165 | 422-19-122-0001 | Spring |
| 125 | 1087233 | 1/4" Flat Washer | 166 | 422-19-014-0003 | Motor Bracket |
| 126 | 904-01-010-1620 | Front Trunnion Bracket | 167 | 901-11-020-0834 | 5/16-18 x 3/4" Carriage Bolt |
| 127 | 901-01-060-0608 | 5/16" Flat Washer | 168 | 904-01-010-1620 | 5/16" Flat Washer |
| 128 | 1087893 | 5/16-18 x 7/8" Hex Head Screw | 169 | 904-03-030-1656 | 5/16" Ext Tooth Lockwasher |
| ** | 905-01-010-2716 | Tilt Shaft Assembly, Incl: | 170 | 902-01-010-1300 | 5/16-18 Hex Nut |
| 129 | 904-07-010-5554 | 1/8 x 9/16" Roll Pin | 171 | 422-02-089-0005 | Motor Plate |
| 130 | 426-03-388-0001 | Fiber Washer | * | 34-965 | Belt and Pulley Guard, const of: |
| 131 | 901-04-150-0208 | Set Collar, Incl: | 173 | 901-11-020-0848 | 1/4-20 x 1 3/4" Carriage Bolt |
| 132 | 905-01-010-2711 | 1/4-20 x 1/4" Socket Set Screw | 174 | 904-01-010-1614 | 1/4" Flat Washer |
| 133 | 902-01-200-9846 | 1/8 x 5/8" Roll Pin | 175 | 1088314 | Guard Plate |
| 134 | 422-19-095-0001 | Special Nut | 176 | 1088385 | Speed Nut |
| 135 | 905-01-010-2710 | Front Trunnion | 177 | 424-03-017-0003 | Spacer |
| 136 | 901-04-141-9152 | 3/16 x 7/8" Roll Pin | 178 | 1088315 | Guard Cover |
| 137 | 928-06-010-7381 | 1/4-20 x 5/16" Hex Soc Set Screw | 179 | 902-04-010-1402 | 1/4-20 Wing Nut |
| 138 | 904-01-010-1614 | Spring Washer | 180 | 902-01-283-1393 | 5/8-18 Hex Nut |
| 139 | 901-03-010-0755 | 1/4" Flat Washer (Early Models Only) | 181 | 1087708 | Wrench |
| 140 | 901-04-190-0238 | 1/4-20 x 5/8" Socket Head Screw | ** | 41-043 | Motor Pulley |
| 141 | 902-01-120-1034 | 1/4-20 Hex Nut | ** | 49-034 | V-Belt |
| 142 | 422-02-088-0001 | Stop Block | Not Included With Basic Machine | | |
| 143 | 422-19-004-0001 | Tie Bar | ** | 50-314 | Steel Stand, Const. of: |
| 144 | 422-19-104-0001 | Spacer | ** | 436-02-066-0028 | (4) Legs |
| 145 | 422-02-105-0001 | Sleeve | ** | 436-02-115-0101 | Shelf |
| 146 | 1087882 | Elevating Shaft, Incl: | ** | 901-11-020-0834 | (24) 5/16-18 x 3/4" Carriage Bolt |
| ** | 905-01-010-2716 | 1/8 x 9/16" Roll Pin | ** | 902-01-010-1300 | (24) 5/16-18 Hex Nuts |
| 147 | 1087087 | Spacer | ** | 904-01-010-1620 | (8) 5/16" Flat Washer |
| 148 | 422-02-014-0017 | Arbor Bracket | ** | 436-02-103-0010 | (2) 23.415" Tie Bar |
| 149 | 952-01-101-3267 | Shaft | ** | 436-02-103-0011 | (2) 20.915" Tie Bars |
| 150 | 902-01-200-9848 | 5/8-12 L.H. Arbor Nut | * | NOT SHOWN ASSEMBLED | |
| 151 | 422-04-103-5001 | Flange | ** | NOT SHOWN | |
| 152 | 34-105 | 10" Combination Blade | | | |
| 153 | 422-19-303-0001 | Arbor w/Flange | | | |
| 154 | 1087857 | Spacer | | | |
| 155 | 1086894 | Bearing | | | |
| 156 | 928-06-020-7382 | Load Spring | | | |
| 157 | 902-07-020-7176 | Spanner Nut | | | |

This parts list is provided to aid in obtaining service parts. Copies of the instruction and maintenance literature can be obtained through the Delta Technical Publications Department or through your local service outlet.