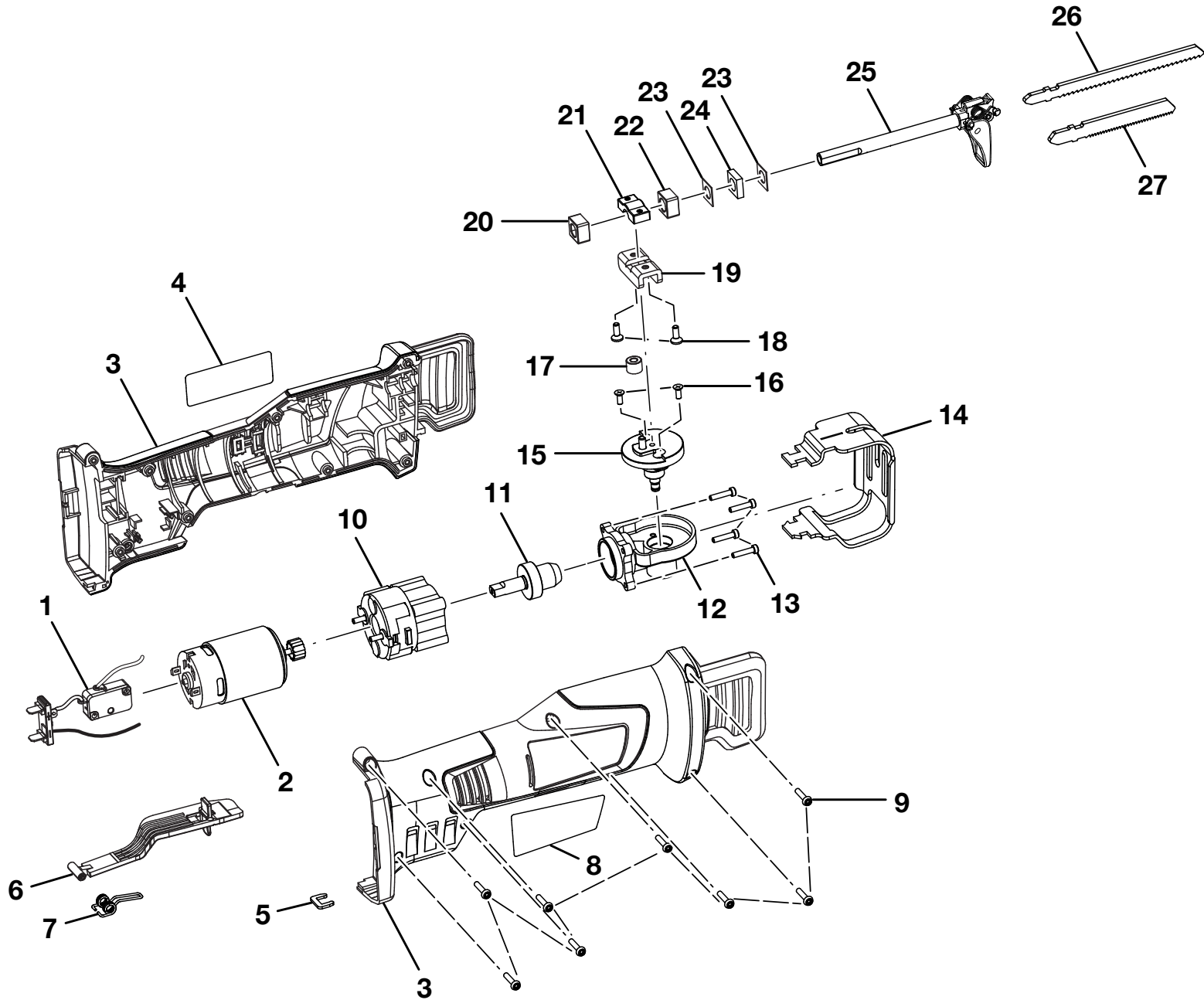


RYOBI 12 VOLT HYBRID SAW – MODEL NUMBER CR120L



RYOBI 12 VOLT HYBRID SAW – MODEL NUMBER CR120L

The model number will be found on a label attached to the motor housing. Always mention the model number in all correspondence regarding your **HYBRID SAW** or when ordering repair parts.

PARTS LIST

KEY NO.	PART NUMBER	DESCRIPTION	QTY	KEY NO.	PART NUMBER	DESCRIPTION	QTY
1	270017124	SWITCH ASSEMBLY	1	16	660228016	SCREW (M3 x 8 mm).....	2
2	230008001	MOTOR ASSEMBLY	1	17	300019005	BUSHING ASSEMBLY w/BEARING	1
3	200687001	HOUSING ASSEMBLY	1	18	661065001	SCREW (M3.5 x 10 mm).....	2
4	940304497	LOGO LABEL.....	1	19	632475001	SAW BAR SLIDE BRACKET	1
5	632340001	CLIP.....	1	20	681261002	BEARING SLEEVE.....	1
6	200729001	TRIGGER ASSEMBLY	1	21	610766001	COVER PLATE.....	1
7	692102001	SPRING	1	22	681261001	FRONT BEARING SLEEVE.....	1
8	940976266	DATA LABEL	1	23	632474001	CLIP PLATE	2
9	660570004	SCREW (M3 x 14 mm).....	8	24	902094001	FELT WASHER.....	1
10	200728001	GEAR HOUSING ASSEMBLY	1	25	302482001	SAW BAR & BLADE CLAMP ASSEMBLY....	1
11	200736001	BEVEL PINION ASSEMBLY	1	26	690227032	WOOD CUTTING BLADE	1
12	200727001	BEVEL CASE SUPPORT ASSEMBLY.....	1	27	690227053	METAL CUTTING BLADE	1
13	660203055	SCREW (M3 x 14 mm).....	4		987000325	OPERATOR'S MANUAL (961022021)	
14	632473001	SHOE.....	1		7-06-10		
15	200726001	BEVEL GEAR ASSEMBLY	1		(REV:01)		