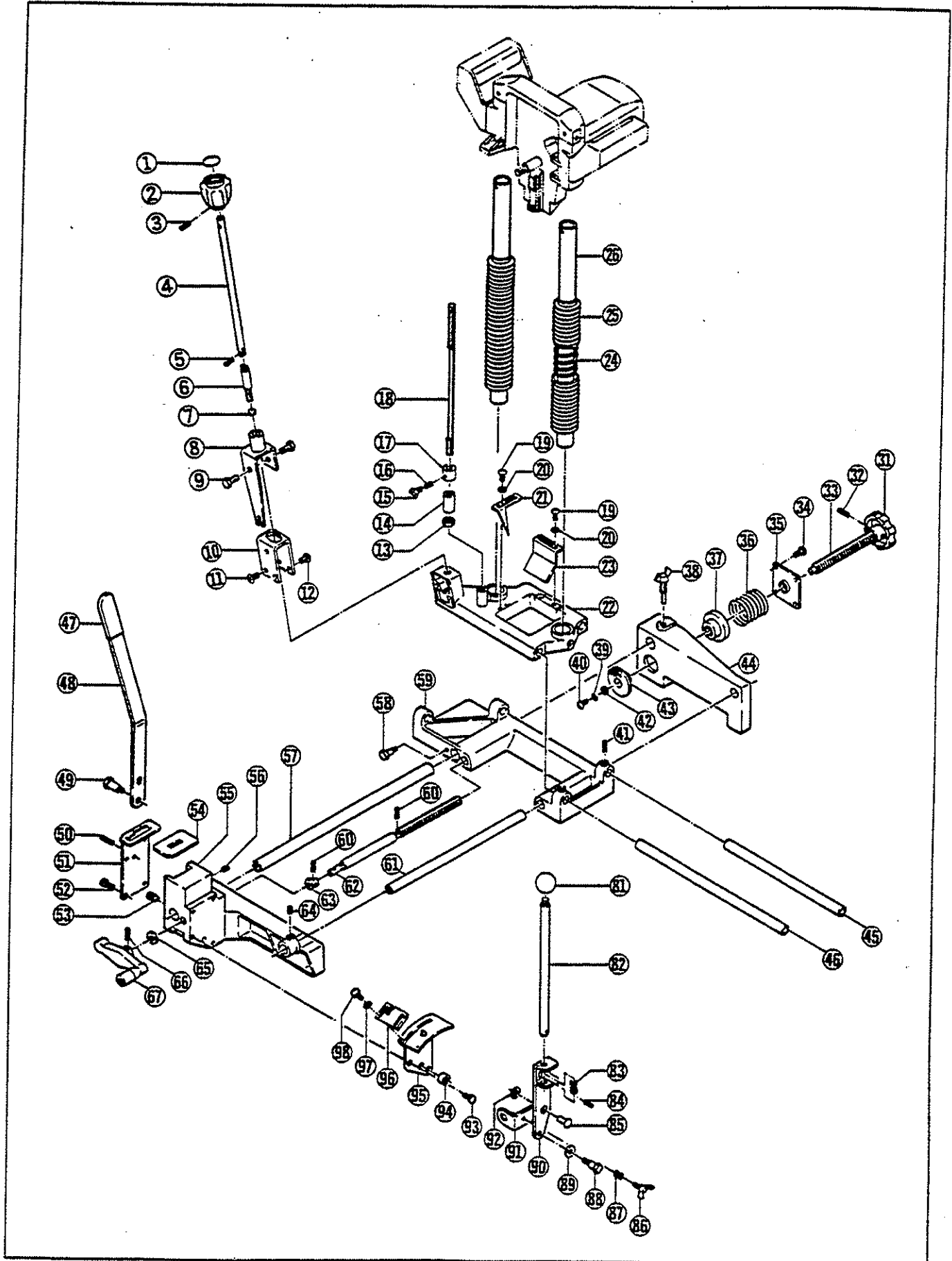


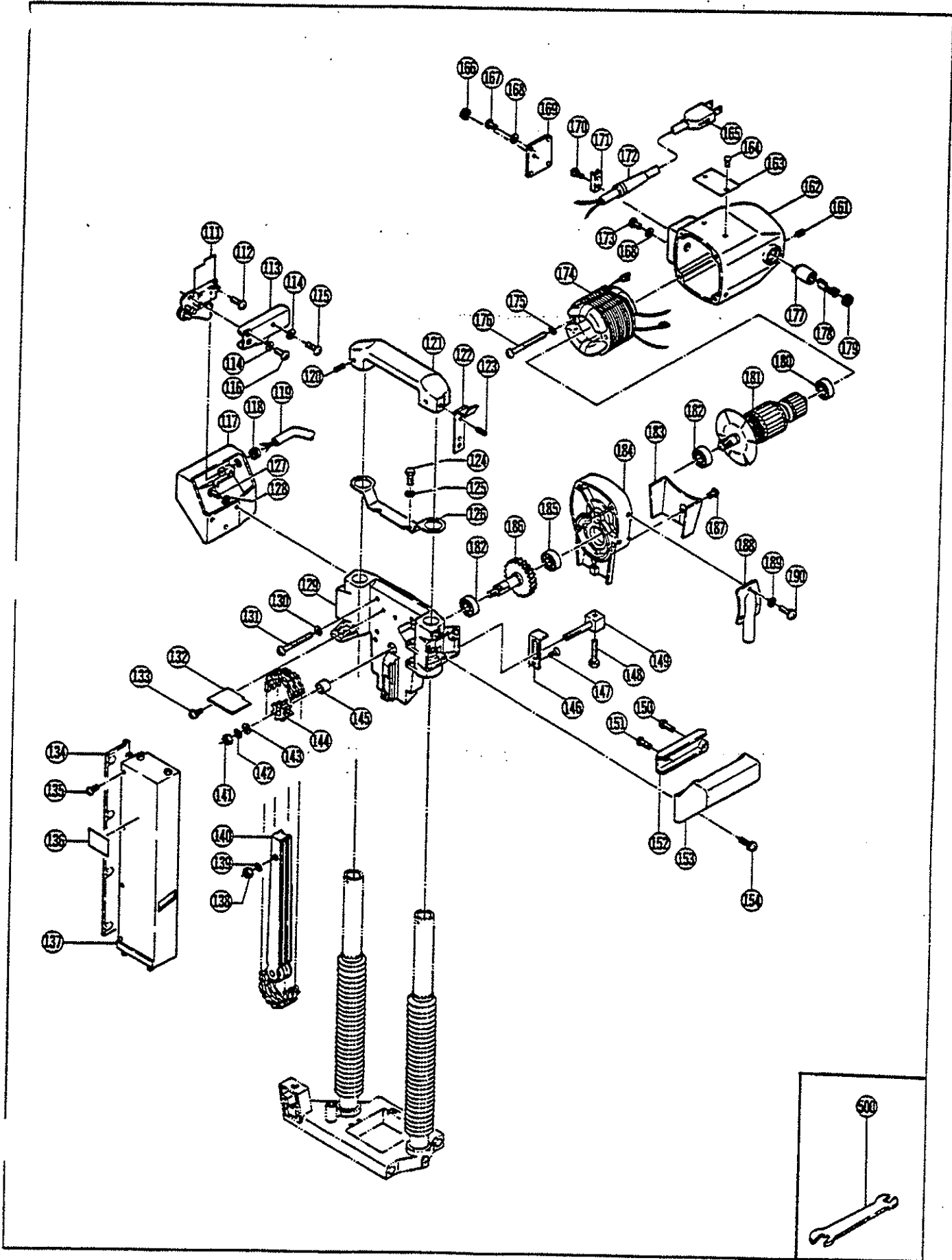
CHAIN MORTISER

CM-30A



CHAIN MORTISER

CM-30A



PARTS LIST FOR AFTER SALES SERVICE MODEL CM30A

REF	PART NO.	DESCRIPTION	QTY	REF	PART NO.	DESCRIPTION	QTY
1	6920610	LABEL	1	53	6100658	STOPPER BOLT	1
2	6831123	GRIP	1	54	6370239	RUBBER PLATE	1
3	9404025	SPRING PIN	1	55	6320180	FRONT VISE	1
4	6100326	LEVER	1	56	9280508	CLAMP SCREW M5X8	1
5	9404016	SPRING PIN	1	57	6100330	SLIDE BAR	1
6	6130522	CLAMP BOLT	1	58	6130785	FULCRUM SCREW	1
7	6310008	LOCK PLATE	1	59	6850290	BASE	1
8	6090255	LINK	1	60	9404016	SPRING PIN	2
9	6130786	FULCRUM SCREW	2	61	6100332	SLIDE BAR	1
10	6151599	METAL FITTING	1	62	6130526	SCREW	1
11	9140512	PHILLIPS FLAT SCREW M5X12	2	63	6900497	COLLAR	1
12	9020514	PHILLIPS PAN SCREW M5X14	2	64	9280608	CLAMP SCREW M6X8	1
13	9300800	HEX NUT M8	1	65	6900251	THRUST WASHER	1
14	6900499	SPACER	1	66	9404018	SPRING PIN	1
15	9240620	WING BOLT M6X20	1	67	6831455	HANDLE	1
16	6180004	COMPRESSION SPRING	1	81	6831328	GRIP	1
17	6900495	COLLAR	1	82	6090097	LEVER	1
18	6960190	BAR	1	83	6180477	COMPRESSION SPRING	1
19	9020408	PHILLIPS PAN SCREW M4X8	2	84	9405030	SPRING PIN	1
20	9570400	WASHER	2	85	6120027	RIVET	1
21	6151614	SCALE	1	86	9240625	WING BOLT M6X25	1
22	6850293	BASE	1	87	6180004	COMPRESSION SPRING	1
23	6151617	SCALE	1	88	6100876	FULCRUM SHAFT	1
24	6180258	COMPRESSION SPRING	2	89	6900687	LOCK WASHER	1
25	6390144	COVER	2	90	6090225	LEVER	1
26	6100329	GUIDE BAR	2	91	6154088	LINK	1
31	6831605	GRIP 58	1	92	9570800	WASHER	1
32	9404025	SPRING PIN	1	93	9020514	PHILLIPS PAN SCREW M5X14	4
33	6130524	CLAMP BOLT	1	94	6900763	COLLAR	1
34	9040514	TAPPING SCREW (S) M5X14	4	95	6154717	PLATE	1
35	6151620	PLATE	1	96	6154091	METAL FITTING	1
36	6180260	COMPRESSION SPRING	1	97	9570500	WASHER	2
37	6130525	CLAMP NUT	1	98	9020510	PHILLIPS PAN SCREW M5X10	2
38	6130523	CLAMP BOLT	1	111	6850098	TRIGGER SWITCH	1
39	9550600	SPRING WASHER M6	1	112	6130910	PHILLIPS PAN SCREW M4X8	4
40	9000612	PHILLIPS PAN SCREW M6X12	1	113	6831431	HANDLE COVER (A)	1
41	9405035	SPRING PIN	4	114	9600400	TOOTHED LOCK WASHER M4	2
42	9570600	WASHER	3	115	9000416	PHILLIPS PAN SCREW M4X16	1
43	6320341	CLAMP PLATE	1	116	9000425	PHILLIPS PAN SCREW M4X25	1
—	6190364	CLAMP PLATE	1	117	6831937	HANDLE (A)	1
44	6320181	REAR VISE	1	118	6560126	CORD BUSH	1
45	6100335	GUIDE BAR	1	119	6590601	CORD	1
46	6100337	GUIDE BAR	1	120	9405036	SPRING PIN	2
47	6831504	GRIP	1	121	6320183	BRACKET	1
48	6100338	CLAMP LEVER	1	122	6180259	HOOK	1
49	6100323	CLAMP SHAFT	1	123	9406012	SPRING PIN	1
50	6100324	CLAMP FULCRUM SHAFT	1	124	9190512	HEX HEAD BOLT M5X12	2
51	6151623	CLAMP PLATE	1	125	9570500	WASHER	2
52	9020514	PHILLIPS PAN SCREW M5X14	4	126	6151603	GUARD BRACKET	1

PARTS LIST FOR AFTER SALES SERVICE MODEL CM30A

127	9000514	PHILLIPS PAN SCREW M5X14	3	166	6560126	CORD BUSH	2
	9600500	TOOTHED LOCK WASHER M5	3	167	9000412	PHILLIPS PAN SCREW M4X12	4
129	6801284	FRONT FRAME	1	168	9600400	TOOTHED LOCK WASHER M4	2
130	9600600	TOOTHED LOCK WASHER M6	4	169	6154683	TERMINAL COVER	1
131	9000665	PHILLIPS PAN SCREW M6X65	4	170	9000416	PHILLIPS PANS CREW M4X16	2
132	6154695	CHAIN GUARD	1	171	6560067	CORD CLAMP	1
133	9020510	PHILLIPS PAN SCREW M5X10	2	172	6560059	CORD HOLDER	1
134	6360219	PROTECTION GUARD	1	173	9000408	PHILLIPS PAN SCREW M4X16	1
135	9060412	TAPPING SCREW (B) M4X12	3	174	6501337	FIELD COIL	1
136	6921436	"RYOBI" MARK	1	175	9550500	SPRING WASHER M5	2
137	6360218	PROTECTION GUARD	1	176	9000560	PHILLIPS PAN SCREW M5X60	2
138	9301000	HEX NUT M10	1	177	6570097	BRUSH HOLDER	2
139	9551000	SPRING WASHER M10	1	178	6540063	CARBON BRUSH SET	1
140	6090252	CHAIN GUIDE BAR	1	179	6570107	BRUSH CAP	2
141	9300800	HEX NUT M8	1	180	9846200	BALL BEARING #6200LLB	1
142	9550800	SPRING WASHER M8	1	181	6031612	ARMATURE	1
143	6900491	WASHER	1	182	9846202	BALL BEARING #6202LLB	2
144	6860145	CHAIN SPROCKET	1	183	6151629	AIR DUCT	1
145	6900492	COLLAR	1	184	6820670	INNER CASE	1
146	6151608	TENSION PLATE	1	185	9846201	BALL BEARING #6201LLB	1
147	9150410	FLAT TAPPING SCREW (S) M4X10	1	186	6050113	GEAR	1
148	9190845	HEX HEAD BOLT M8X45	1	187	9040410	TAPPING SCREW (S) M4X10	2
149	6100327	TENSION BAR	1	188	6360217	AIR DUCT	1
150	9020425	PHILLIPS PAN SCREW M4X24	1	189	9570400	WASHER	3
151	9020416	PHILLIPS PAN SCREW M4X16	1	190	9020412	PHILLIPS PANS CREW M4X12	3
	6831433	HANDLE COVER (B)	1	---	6560008	TERMINAL	3
153	6831429	HANDLE (B)	1	---	6560160	CONNECTOR	2
154	9020514	PHILLIPS PAN SCREW M5X14	3	---	6590113	VINYL TUBE	1
161	9280508	CLAMP SCREW M5X8	2				
162	6801281	MOTOR HOUSING	1				
STANDARD ACCESSORIES							
163	6913430	NAME PLATE	1	500	6240123	OPEN-END WRENCH 13MM	1
164	6120005	RIVET #2	2	---	6240533	OPEN-END WRENCH 17MM	1
165	6520233	CORD ASS'Y AWG#16X3X2	1	502	6690733	1-3/16" CHAIN BLADE SET	1

SERVICE NOTES:

