

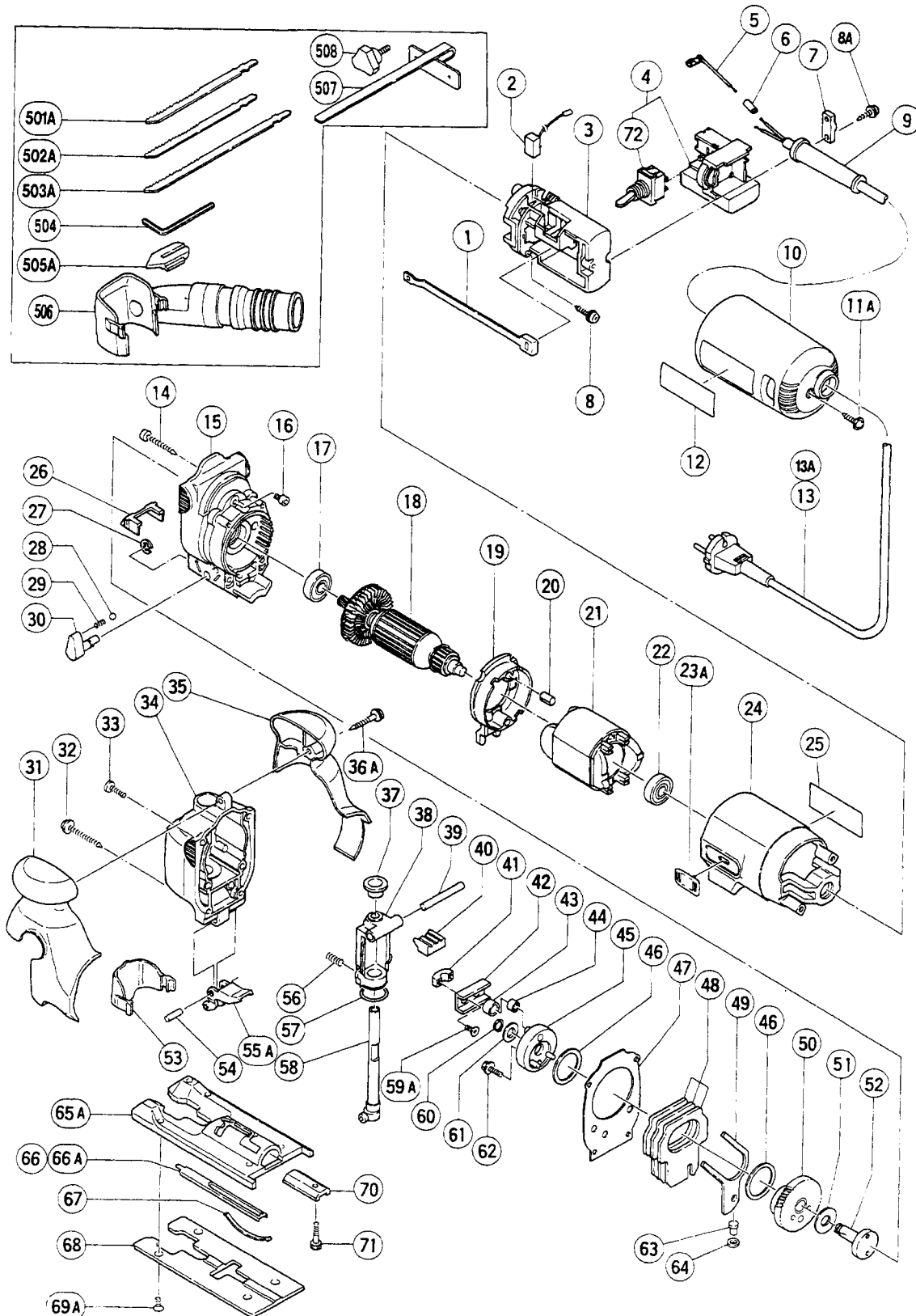
ELECTRIC TOOL PARTS LIST

■ JIG SAW

Model CJ 65VA2

1997 · 5 · 30

(E3)



PARTS

CJ 65VA2

ITEM NO.	CODE NO.	DESCRIPTION	NO. USED	REMARKS
1	305-731	SLIDE BAR	1	
2	999-046	CARBON BRUSH (AUTO STOP TYPE) (1 PAIR)	2	
3	305-763	WIRING BLOCK (A)	1	
* 4	305-769	WIRING BLOCK (B) ASS'Y	1	INCLUD.72
* 4	305-766	WIRING BLOCK (B) ASS'Y	1	INCLUD.72 FOR NZL.GBR (240V).SAF.ITA.FR.G. FRA.HOL.DEN.FIN.SWE.AUT.NOR.SUI
* 4	305-765	WIRING BLOCK (B)	1	INCLUD.72 FOR GBR (110V)
* 4	305-768	WIRING BLOCK (B)	1	INCLUD.72 FOR USA.CAN
5	305-764	INTERNAL WIRE	2	
6	959-142	CONNECTOR 50096 (10 PCS.)	2	
7	960-266	CORD CLIP	1	
8	984-750	TAPPING SCREW (W/FLANGE) D4X16	2	
8A	305-812	TAPPING SCREW (W/FLANGE) D4X16 (BLACK)	2	
* 9	953-327	CORD ARMOR D8.8	1	
* 9	938-051	CORD ARMOR D10.1	1	
10	305-770	TAIL COVER	1	
11A	309-470	TAPPING SCREW (W/FLANGE) D4X12 (BLACK)	1	
12		HITACHI LABEL	1	
* 13	500-432Z	CORD	1	(CORD ARMOR D8.8) FOR USA
* 13	500-409Z	CORD	1	(CORD ARMOR D8.8)
* 13	500-423Z	CORD	1	(CORD ARMOR D8.8) FOR SIN.KUW
* 13	500-226Z	CORD	1	(CORD ARMOR D8.8) FOR NZL.AUS
* 13	500-231Z	CORD	1	(CORD ARMOR D8.8) FOR SAF
* 13	500-247Z	CORD	1	(CORD ARMOR D10.1) FOR SWE
* 13	500-240Z	CORD	1	(CORD ARMOR D8.8) FOR CAN
* 13	500-245Z	CORD	1	(CORD ARMOR D10.1) FOR SYR
* 13	500-395Z	CORD	1	(CORD ARMOR D8.8) FOR SUI
* 13A	500-436Z	CORD	1	(CORD ARMOR D8.8) FOR GBR
14	954-014	TAPPING SCREW D4X30	2	
15	305-733	GEAR COVER	1	
16	305-735	HEX. SOCKET HD. BOLT (W/FLANGE) M4X6	2	
17	608-DDW	BALL BEARING 608DDW	1	
* 18	360-277C	ARMATURE 110V - 115V	1	
* 18	360-277E	ARMATURE 220V - 230V	1	
* 18	360-277F	ARMATURE 240V	1	
19	305-729	FAN GUIDE ASS'Y	1	INCLUD.20
20	994-343	RUBBER BUSHING	2	
* 21	340-249C	STATOR 110V - 115V	1	
* 21	340-249E	STATOR 220V - 230V	1	
* 21	340-249F	STATOR 240V	1	
22	608-DDM	BALL BEARING 608DDMC2EPS2S	1	
23A	305-732	SLIDE KNOB	1	
24	305-728	HOUSING	1	
25		NAME PLATE	1	
26	305-753	SHOOTER	1	
27	673-489	RETAINING RING (E - TYPE) FOR D5 SHAFT	1	
28	959-155	STEEL BALL D3.97 (10 PCS.)	1	
29	982-454	SPRING (C)	1	
30	305-744	CHANGE KNOB	1	
31	305-756	COVER (A)	1	
32	305-736	TAPPING SCREW (W/FLANGE) D4X65	2	

*: ALTERNATIVE PARTS

PARTS

CJ 65VA2

ITEM NO.	CODE NO.	DESCRIPTION	NO. USED	REMARKS
33	949-219	MACHINE SCREW M4X16 (10 PCS.)	2	
34	305-762	UPPER COVER	1	
35	305-757	COVER (B)	1	
36A	307-028	TAPPING SCREW (W/FLANGE) D4X25 (BLACK)	1	
37	305-746	RUBBER PACKING	1	
38	305-745	PLUNGER HOLDER ASS'Y	1	INCLUD.57
39	961-181	PIN D6X47	1	
40	305-751	RUBBER CUSHION	1	
41	305-748	CONNECTOR HOLDER	1	
42	305-747	CONNECTOR	1	
43	940-916	CONNECTING PIECE	1	
44	940-917	NEEDLE BEARING NTN K6X9X8T2	1	
45	305-742	WEIGHT HOLDER	1	
46	963-349	WASHER (A)	2	
47	305-743	PACKING	1	
48	305-741	BALANCE WEIGHT (3 PCS.)	3	
49	305-738	ORBITAL CAM	1	
50	305-737	GEAR	1	
51	957-540	WASHER (A)	1	
52	305-734	SPINDLE	1	
53	305-772	CHIP COVER	1	
54	305-592	NEEDLE D5X19.8	1	
55A	305-754	GUIDE ROLLER	1	
56	305-752	SPRING	2	
57	873-095	O - RING (P - 16)	1	
58	305-750	PLUNGER	1	
59A	305-749	SEAL LOCK FLAT HD. SCREW M4X10	2	
60	940-079	RETAINING RING FOR D8 SHAFT	1	
61	963-351	WASHER (B)	1	
62	305-755	HEX. SOCKET HD. BOLT (W/FLANGE) M5X12	1	
63	305-739	ORBITAL PIN	1	
64	305-740	FELT	1	
65A	306-893	BASE	1	
66	305-761	SPACER	1	TILL 1.1993
66A	306-895	SPACER	1	SINCE 2.1993
67	305-760	PLATE SPRING	2	
68	305-759	SUB BASE (A)	1	
69A	309-175	NYLOCK FLAT HD.SCREW M5X10	4	
70	963-371	BASE LOCKER	1	
71	306-060	HEX. SOCKET HD. BOLT (W/FLANGE) M4X20	1	
72	303-082	SWITCH	1	

STANDARD ACCESSORIES

ITEM NO.	CODE NO.	DESCRIPTION	NO. USED	REMARKS
501A		BLADE NO.42	1	
502A		BLADE NO.46	1	
503A		BLADE NO.41	1	
504	943-277	HEX. BAR WRENCH 3MM	1	

* : ALTERNATIVE PARTS

