

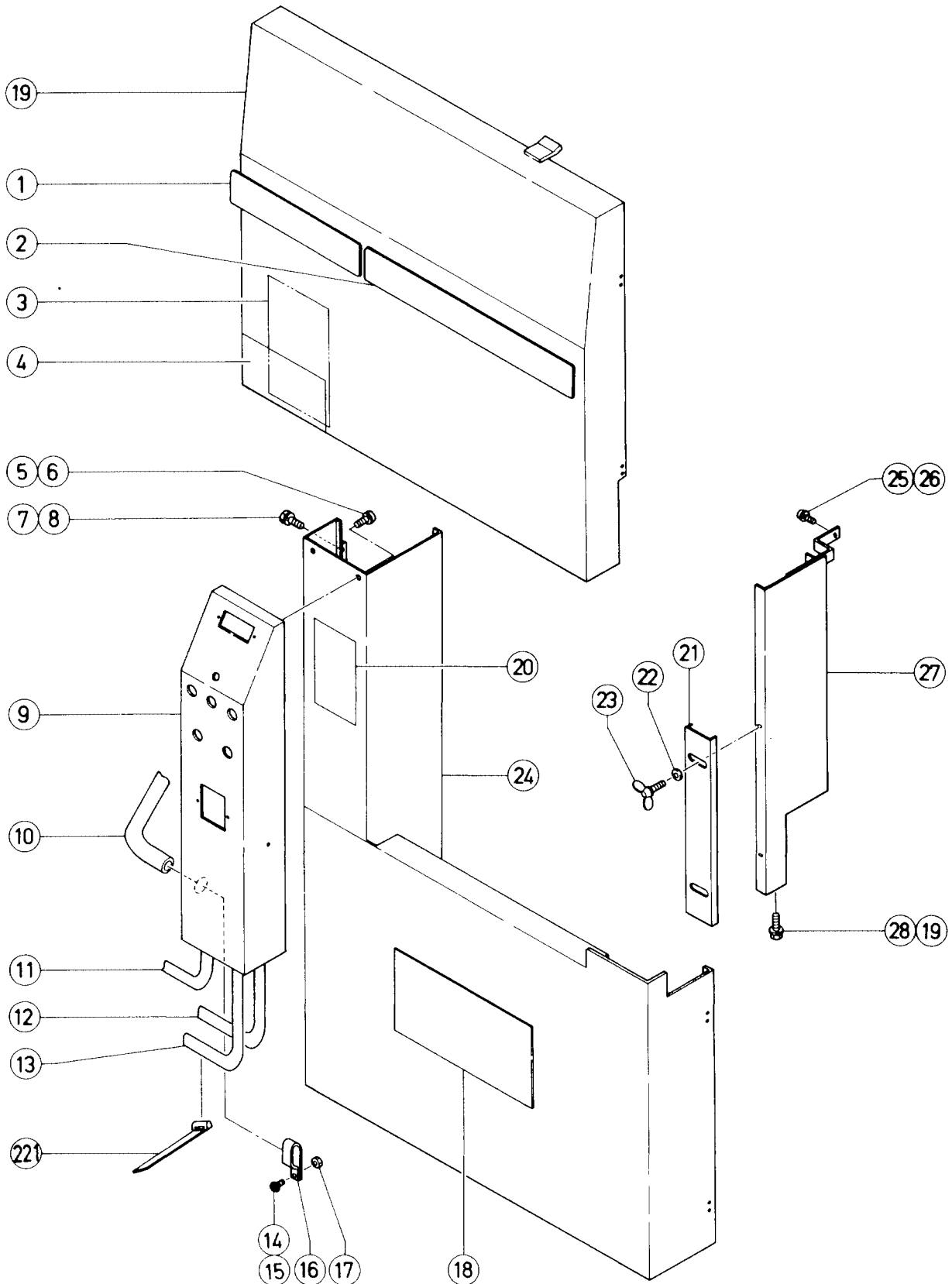
ELECTRIC TOOL PARTS LIST

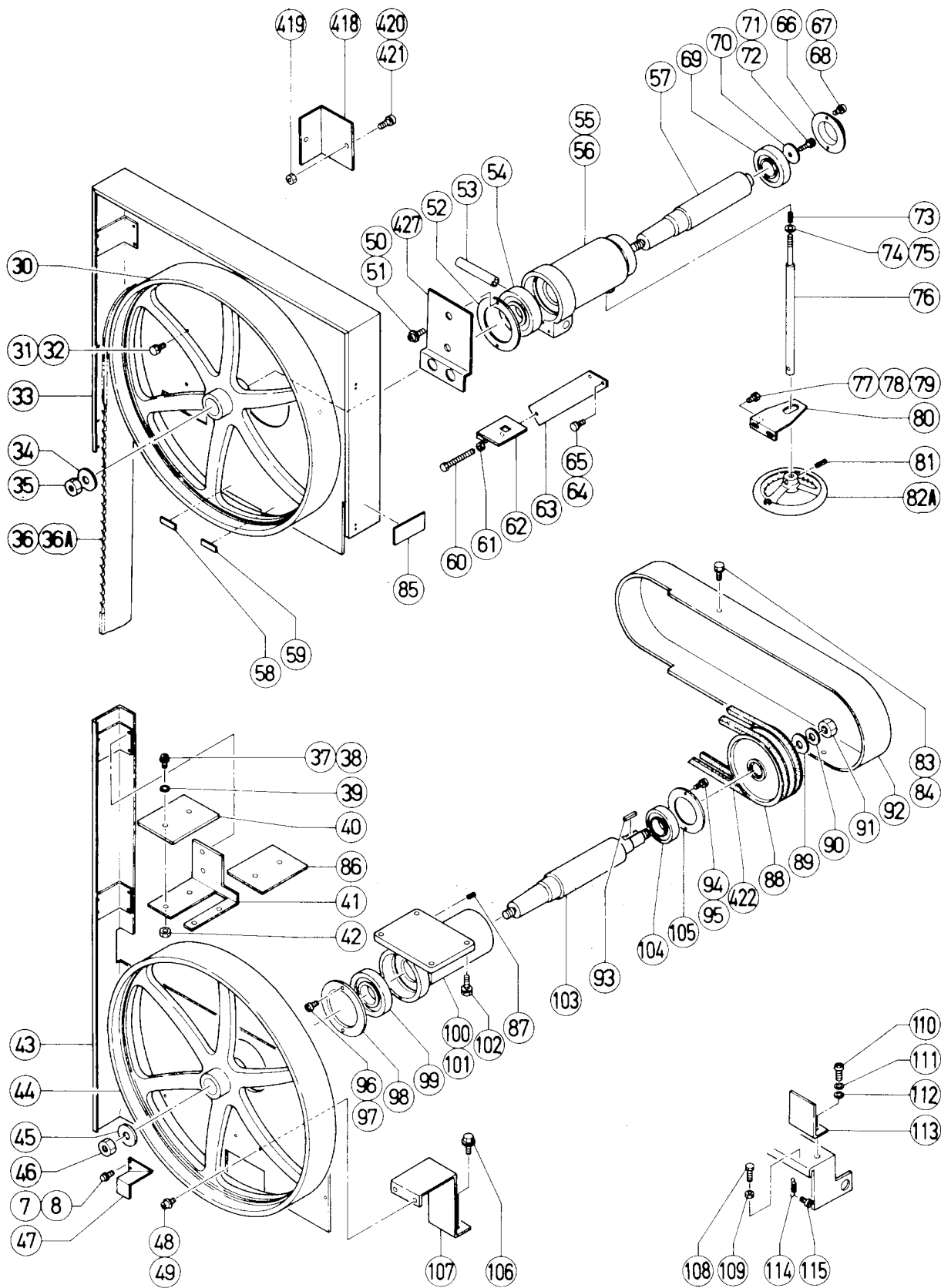
■BAND SAW

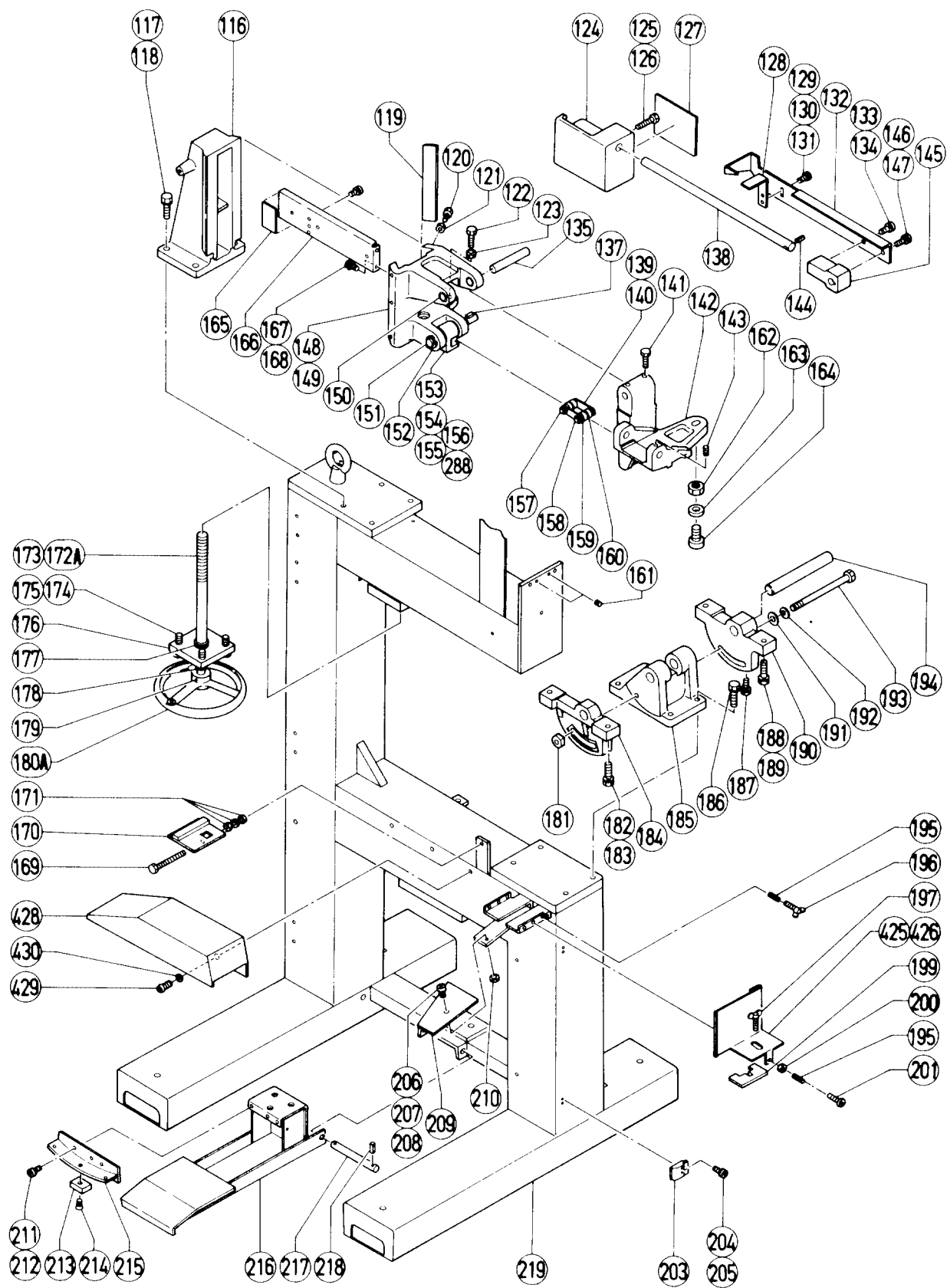
1989-10-20

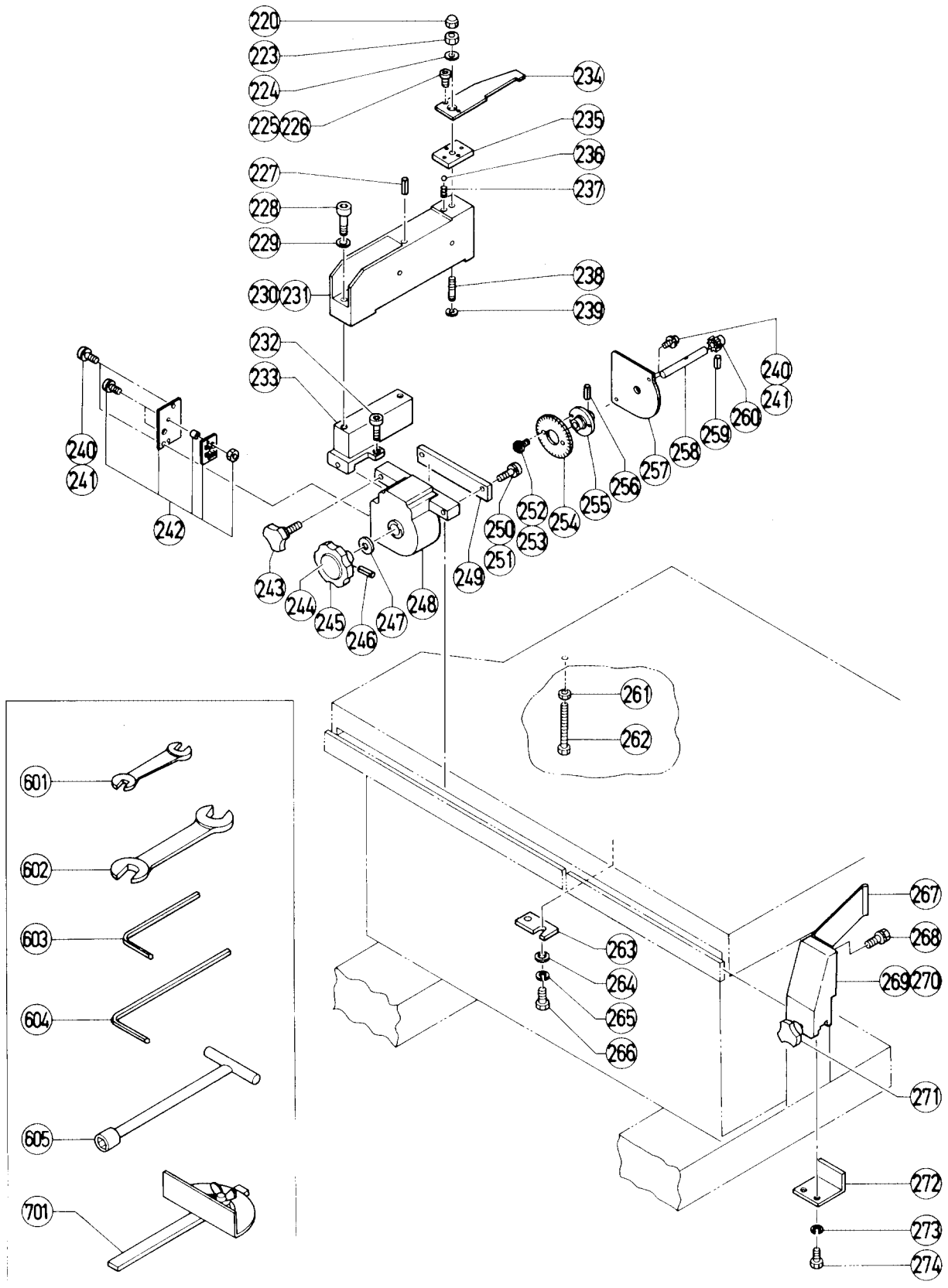
Model CB 100FA

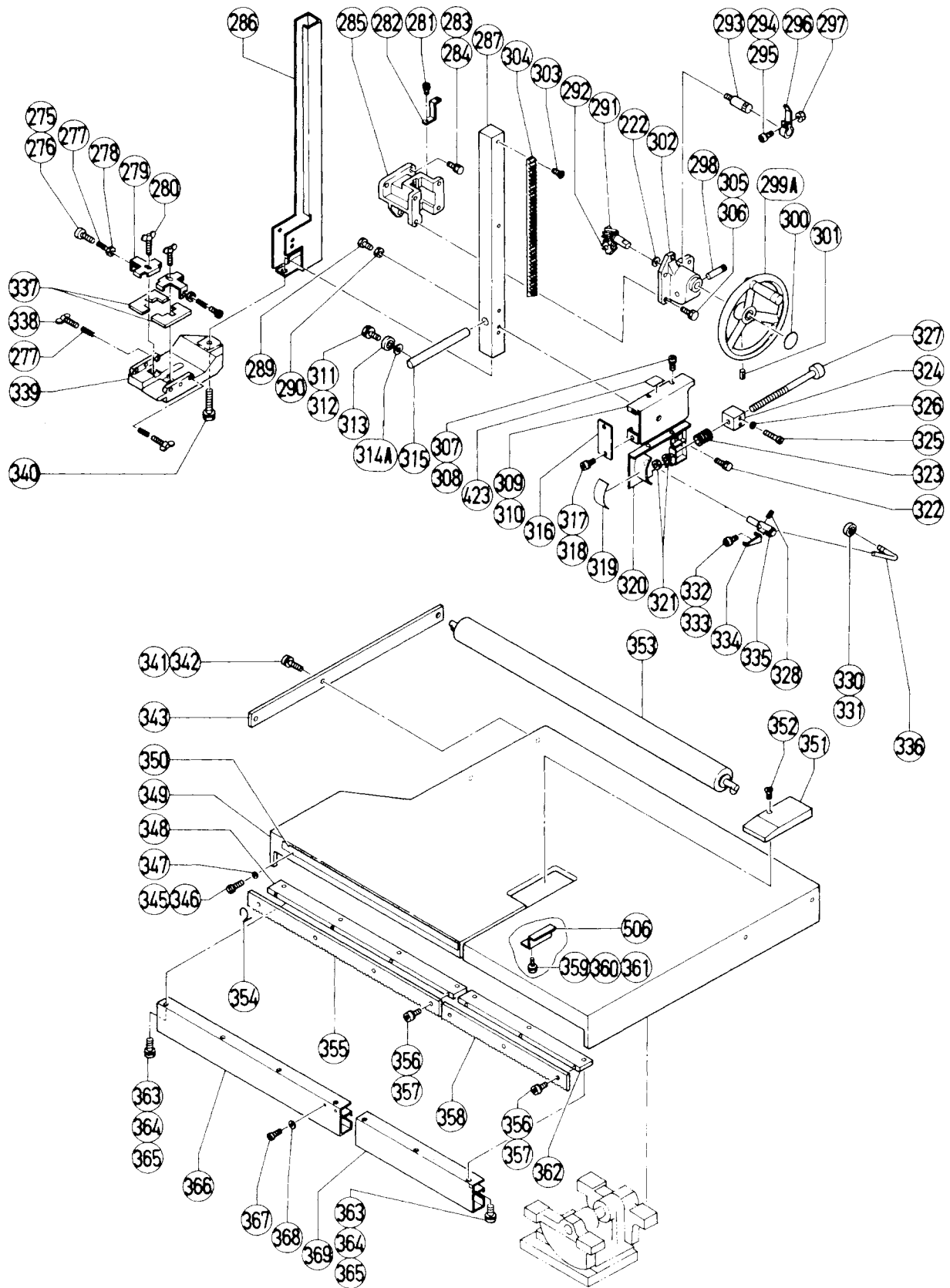
CB 100FA(E2)

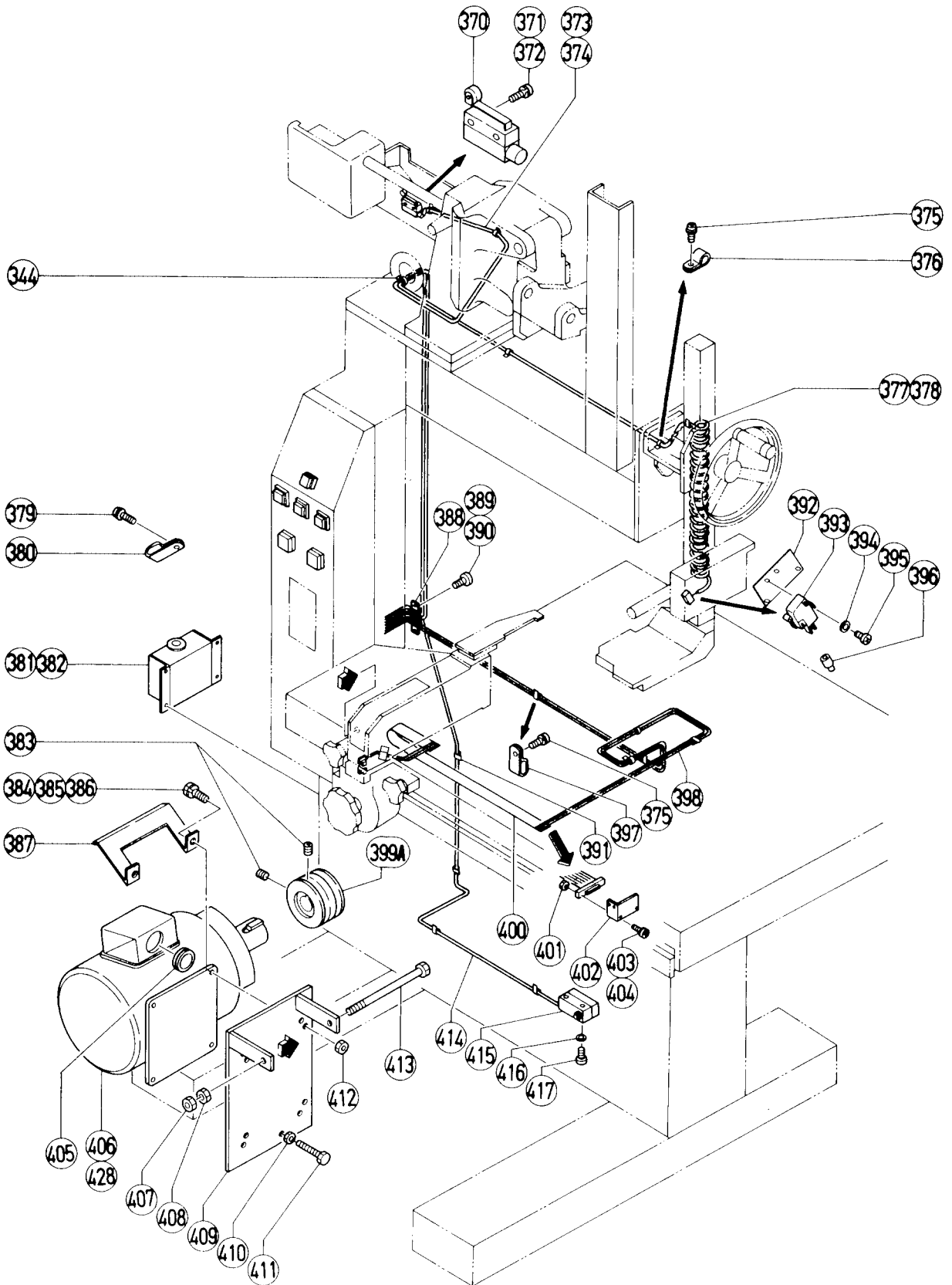


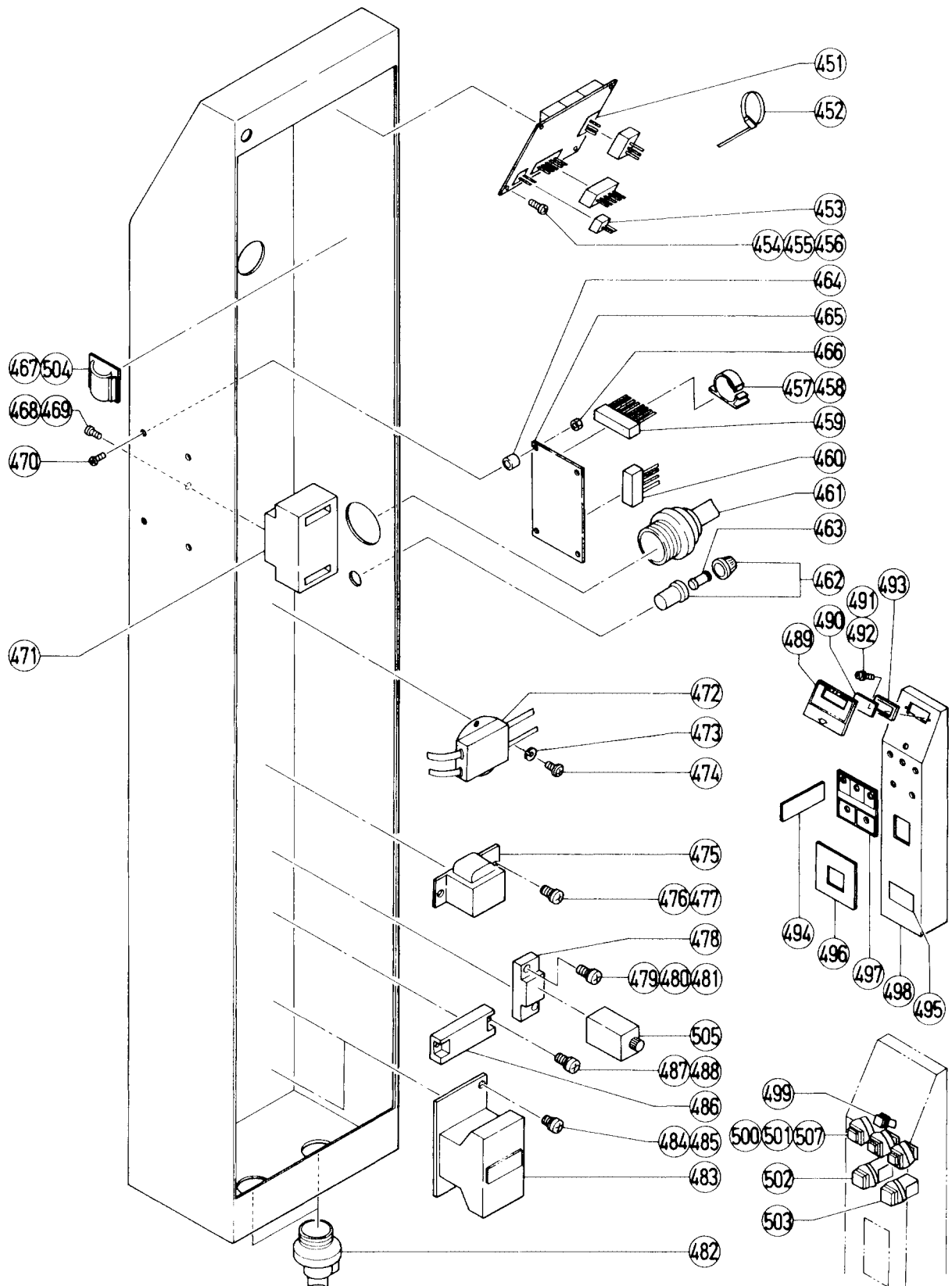












PARTS

CB 100FA

ITEM NO.	CODE NO.	DESCRIPTION	NO. USED	REMARKS	
1	975-579	HITACHI LABEL	1		
2	988-556	HITACHI LABEL	1		
3	988-566	CAUTION PLATE (H)	1		
4	988-565	SET GAUGE LABEL	1		
5	949-254	MACHINE SCREW M6X10 (10 PCS.)	2		
6	949-455	SPRING WASHER M6 (10 PCS.)	2		
7	949-613	BOLT M6X16 (10 PCS.)	28		
8	949-455	SPRING WASHER M6 (10 PCS.)	28		
9	988-578	CONTROLLER ASSY	1	INCLUD.451-505	
10	974-787	SILICONE FLEXIBLE TUBE	1		
11	975-452	CORD (C)	1		
12	975-454	CORD (B)	1		
13	975-453	CORD (C)	1		
14	949-216	MACHINE SCREW M4X10 (10 PCS.)	1		
15	949-453	SPRING WASHER M4 (10 PCS.)	1		
16	966-049	NYLON CLIP	1		
17	949-554	NUT M4 (10 PCS.)	1		
18		NAME PLATE	1		
19	988-498	COVER (E)	1		
20	988-564	WIRING DIAGRAM	1		
21	974-785	SAFETY COVER (B)	1		
22	949-431	BOLT WASHER M5 (10 PCS.)	2		
23	949-397	WING BOLT M5X10 (10 PCS.)	2		
24	988-559	COVER	1		
25	949-613	BOLT M6X16 (10 PCS.)	1		
26	949-455	SPRING WASHER M6 (10 PCS.)	1		
27	974-784	SAFETY COVER	1		
28	949-622	BOLT M8X16 (10 PCS.)	1		
29	949-457	SPRING WASHER M8 (10 PCS.)	1		
30	974-105	SAW WHEEL	1		
31	949-622	BOLT M8X16 (10 PCS.)	1		
32	949-457	SPRING WASHER M8 (10 PCS.)	1		
33	988-497	COVER (D)	1		
34	965-715	WASHER (B)	1		
35	948-510	NUT (LEFT HAND) M20	1		
*	36	974-100	BAND SAW BLADE (A) (STELLITE TIP)	1	
*	36A	939-973	BAND SAW BLADE (D) (STELLITE TIP)	1	FOR USA
	37	949-237	MACHINE SCREW M5X12 (10 PCS.)	4	
	38	949-454	SPRING WASHER M5 (10 PCS.)	4	
	39	949-431	BOLT WASHER M5 (10 PCS.)	4	
	40	974-769	RUBBER PACKING (A)	1	
	41	974-768	COVER PLATE (C)	1	
	42	949-555	NUT M5 (10 PCS.)	4	
	43	988-496	COVER (A)	1	
	44	974-105	SAW WHEEL	1	
	45	965-715	WASHER (B)	1	
	46	948-510	NUT (LEFT HAND) M20	1	
	47	974-767	COVER PLATE (A)	1	
	48	949-239	MACHINE SCREW M5X16 (10 PCS.)	2	
	49	949-454	SPRING WASHER M5 (10 PCS.)	2	
	50	949-256	MACHINE SCREW M6X16 (10 PCS.)	2	
	51	949-455	SPRING WASHER M6 (10 PCS.)	2	

* : ALTERNATIVE PARTS

09-89

PARTS

CB 100FA

ITEM NO.	CODE NO.	DESCRIPTION	NO. USED	REMARKS
52	974-103	BEARING COVER (A)	1	
53	965-725	PIN (A)	1	
54		BALL BEARING (6310ZZCM)	1	
55	974-151	CASING (B) ASS'Y	1	INCLUD.50-52,54-57,66-72
56		CASING (B)	1	
57		SAW SHAFT (B)	1	
58	968-331	MARK PLATE (B)	1	
59	975-571	MARK PLATE (A)	1	
60	967-104	SCREW (D)	1	
61	949-568	LOCK NUT M8 (10 PCS.)	3	
62	974-173	DUSTER (B)	1	
63	974-172	DUSTER ARM	1	
64	949-755	HEX. SOCKET HD. BOLT M6X16 (10 PCS.)	2	
65	949-455	SPRING WASHER M6 (10 PCS.)	2	
66	974-153	BEARING COVER (C)	1	
67	949-256	MACHINE SCREW M6X16 (10 PCS.)	2	
68	949-455	SPRING WASHER M6 (10 PCS.)	2	
69	630-7ZZ	BALL BEARING 6307ZZCMPS2S	1	
70	936-305	WASHER (A)	1	
71	949-638	BOLT M10X20 (10 PCS.)	1	
72	949-458	SPRING WASHER M10 (10 PCS.)	1	
73	965-342	METAL SPRING (C)	1	
74	949-437	BOLT WASHER M12 (10 PCS.)	1	
75	936-305	WASHER (A)	1	
76	974-161	KNOB SHAFT	1	
77	949-613	BOLT M6X16 (10 PCS.)	2	
78	949-455	SPRING WASHER M6 (10 PCS.)	2	
79	949-432	BOLT WASHER M6 (10 PCS.)	2	
80	974-202	KNOB SHAFT STAY	1	
81	949-746	ROLL PIN D5X32 (10 PCS.)	2	
82A	988-976	ROUND HANDLE 160MM	1	
83	949-610	BOLT M6X10 (10 PCS.)	3	
84	949-455	SPRING WASHER M6 (10 PCS.)	3	
85	988-562	CAUTION PLATE	1	
86	974-770	RUBBER PACKING (B)	1	
87	949-878	ROLL PIN D8X20 (10 PCS.)	2	
88	974-106	PULLEY (D)	1	
89	965-715	WASHER (B)	1	
90	949-745	SPRING WASHER M20 (10 PCS.)	1	
91	948-530	NUT M20	1	
92	988-528	BELT COVER	1	
93	965-797	FEATHER KEY 10X8X35	1	
94	949-256	MACHINE SCREW M6X16 (10 PCS.)	2	
95	949-455	SPRING WASHER M6 (10 PCS.)	2	
96	949-256	MACHINE SCREW M6X16 (10 PCS.)	2	
97	949-455	SPRING WASHER M6 (10 PCS.)	2	
98	974-103	BEARING COVER (A)	1	
99		BALL BEARING (6310ZZ)	1	
100	974-102	CASING (A) ASS'Y	1	INCLUD.96-99,101,103-105
101		CASING (A)	1	
102	951-688	BOLT (W/SP.WASHER) M12X40	4	
103		SAW SHAFT (A)	1	

PARTS

CB 100FA

ITEM NO.	CODE NO.	DESCRIPTION	NO. USED	REMARKS
104		BALL BEARING (6308ZZ)	1	
105	974-104	BEARING COVER (B)	1	
106	988-495	BOLT (W/WASHERS) M8X16	2	
107	988-521	SWITCH BASE (A)	1	
108	967-594	HIGH TENSION BOLT M8	1	
109	949-558	NUT M8 (10 PCS.)	1	
110	949-613	BOLT M6X16 (10 PCS.)	2	
111	949-455	SPRING WASHER M6 (10 PCS.)	2	
112	949-432	BOLT WASHER M6 (10 PCS.)	2	
113	974-252	BRAKE PLATE	1	
114	965-779	BRAKE SPRING	2	
115	949-256	MACHINE SCREW M6X16 (10 PCS.)	4	
116	965-716	SLIDE FRAME	1	
117	949-672	BOLT M12X35 (10 PCS.)	4	
118	949-463	SPRING WASHER M12 (10 PCS.)	4	
119	974-158	LINER	1	
120	949-628	BOLT M8X30 (10 PCS.)	3	
121	949-558	NUT M8 (10 PCS.)	3	
122	949-630	BOLT M8X40 (10 PCS.)	1	
123	949-558	NUT M8 (10 PCS.)	1	
124	974-166	BALANCE WEIGHT	1	
125	949-633	BOLT M8X50 (10 PCS.)	1	
126	949-558	NUT M8 (10 PCS.)	1	
127	988-563	CAUTION PLATE (I)	1	
128	974-169	MICRO SWITCH ARM	1	
129	949-236	MACHINE SCREW M5X10 (10 PCS.)	2	
130	949-454	SPRING WASHER M5 (10 PCS.)	2	
131	949-431	BOLT WASHER M5 (10 PCS.)	2	
132	974-167	SCALE ARM	1	
133	949-254	MACHINE SCREW M6X10 (10 PCS.)	1	
134	949-455	SPRING WASHER M6 (10 PCS.)	1	
135	974-160	PIN (B)	1	
137	966-413	FEATHER KEY 5X5X20	1	
138	974-165	SHAFT (B)	1	
139	974-162	BEARING SHAFT ASS'Y	1	INCLUD.140,157-160
140		BEARING PIECE	1	
141	949-616	BOLT M6X25 (10 PCS.)	2	
142	974-159	LINK	1	
143	968-247	HEX. SOCKET SET SCREW M6X10	1	
144	949-746	ROLL PIN D5X32 (10 PCS.)	1	
145	974-163	SHAFT HOLDER	1	
146	949-676	BOLT M6X20 (10 PCS.)	1	
147	949-455	SPRING WASHER M6 (10 PCS.)	1	
148	974-155	SLIDER ASS'Y	1	INCLUD.149-154,288
149		SLIDER	1	
150		ROLLER BEARING (NH24/16)	2	
151	974-157	SHAFT	1	
152	939-547	RETAINING RING FOR D20 SHAFT (10 PCS.)	2	
153	974-156	BEARING HOLDER	1	
154	965-482	FEATHER KEY 5X5X40	1	
155	968-247	HEX. SOCKET SET SCREW M6X10	1	
156	949-685	ROLL PIN D3X20 (10 PCS.)	1	

PARTS

CB 100FA

ITEM NO.	CODE NO.	DESCRIPTION	NO. USED	REMARKS
157		BEARING SHAFT	1	
158	939-540	RETAINING RING FOR D10 SHAFT (10 PCS.)	4	
159	600-0VV	BALL BEARING 8000VVCMP2S	4	
160	949-445	WASHER M10 (10 PCS.)	6	
161	968-247	HEX. SOCKET SET SCREW M6X10	2	
162	949-561	NUT M12 (10 PCS.)	1	
163	965-724	WASHER (A)	1	
164	974-780	HEX. SOCKET HD. BOLT M12X80	1	
165	975-572	SCALE (B)	1	
166	974-168	SCALE PLATE	1	
167	949-254	MACHINE SCREW M6X10 (10 PCS.)	2	
168	949-455	SPRING WASHER M6 (10 PCS.)	2	
169	944-899	BOLT M8X75	1	
170	974-116	DUSTER (A)	1	
171	949-568	LOCK NUT M8 (10 PCS.)	3	
172A	988-974	ROUND HANDLE (B) ASSY	1	INCLUD.173,176-180A
173		FEED SCREW	1	
174	949-695	BOLT M10X35 (10 PCS.)	4	
175	949-458	SPRING WASHER M10 (10 PCS.)	4	
176		SCREW HOLDER	1	
177	939-286	THRUST BEARING (51103)	1	
178		SLEEVE	1	
179	949-746	ROLL PIN D5X32 (10 PCS.)	1	
180A	965-867	ROUND HANDLE 200MM	1	
181	974-119	SQUARE SOCKET 12MM	1	
182	951-688	BOLT (W/SP.WASHER) M12X40	2	
183	949-437	BOLT WASHER M12 (10 PCS.)	2	
184	965-747	HINGE (C)	1	
185	965-745	HINGE (A)	1	
186	951-688	BOLT (W/SP.WASHER) M12X40	4	
187	949-676	BOLT M6X20 (10 PCS.)	1	
188	951-688	BOLT (W/SP.WASHER) M12X40	2	
189	949-437	BOLT WASHER M12 (10 PCS.)	2	
190	974-118	HINGE (B)	1	
191	949-437	BOLT WASHER M12 (10 PCS.)	1	
192	949-463	SPRING WASHER M12 (10 PCS.)	1	
193	974-242	BOLT M12X180	1	
194	965-748	HINGE SHAFT	1	
195	988-538	SPRING	6	
196	949-400	WING BOLT M5X25 (10 PCS.)	4	
197	949-413	WING BOLT M8X25 (10 PCS.)	4	
199	974-196	STABILIZER	2	
200	949-555	NUT M5 (10 PCS.)	2	
201	949-245	MACHINE SCREW M5X30 (10 PCS.)	2	
203	974-186	HOOK	1	
204	949-204	MACHINE SCREW M3X10 (10 PCS.)	16	
205	949-451	SPRING WASHER M3 (10 PCS.)	16	
206	949-258	MACHINE SCREW M6X20 (10 PCS.)	2	
207	949-455	SPRING WASHER M6 (10 PCS.)	2	
208	949-432	BOLT WASHER M6 (10 PCS.)	2	
209	974-781	SAW DUST THROWER	1	
210	949-556	NUT M6 (10 PCS.)	2	

PARTS

CB 100FA

ITEM NO.	CODE NO.	DESCRIPTION	NO. USED	REMARKS
211	949-255	MACHINE SCREW M6X12 (10 PCS.)	3	
212	949-455	SPRING WASHER M6 (10 PCS.)	3	
213	974-113	BRAKE LINING	3	
214	949-331	FLAT HD. SCREW M5X10 (10 PCS.)	3	
215	988-491	LINING HOLDER	1	
216	974-109	BRAKE PEDAL	1	
217	974-110	BRAKE SHAFT	1	
218	949-681	ROLL PIN D5X25 (10 PCS.)	2	
219		FRAME	1	
220	974-141	CAP NUT M8	1	
221	975-144	CABLE TIE	2	
222	932-314	WASHER	1	
223	949-568	LOCK NUT M8 (10 PCS.)	1	
224	949-426	WASHER M8 (10 PCS.)	1	
225	949-819	HEX. SOCKET HD. BOLT M5X10 (10 PCS.)	2	
226	949-454	SPRING WASHER M5 (10 PCS.)	2	
227	949-681	ROLL PIN D5X25 (10 PCS.)	1	
228	949-846	HEX. SOCKET HD. BOLT M10X30 (10 PCS.)	2	
229	949-458	SPRING WASHER M10 (10 PCS.)	2	
230	975-580	GUIDE ASSY	1	INCLUD.228,229,231,233
231	975-582	GUIDE (B)	1	
232	949-760	HEX. SOCKET HD. BOLT M8X25 (10 PCS.)	2	
233	975-584	GUIDE HOLDER (C)	1	
234	974-139	SET GAUGE	1	
235	974-137	SET GAUGE PLATE	1	
236	974-140	STEEL BALL	1	
237	966-459	BALL SPRING	1	
238	974-138	SET GAUGE SHAFT	1	
239	955-479	RETAINING RING (E--TYPE) FOR D6 SHAFT	1	
240	949-254	MACHINE SCREW M6X10 (10 PCS.)	4	
241	949-455	SPRING WASHER M6 (10 PCS.)	4	
242	975-587	SENSOR	1	
243	974-142	KNOB (A) M10X40	1	
244	988-561	GUIDE MARK (A)	1	
245	974-771	KNOB	1	
246	949-681	ROLL PIN D5X25 (10 PCS.)	1	
247	949-437	BOLT WASHER M12 (10 PCS.)	1	
248	974-127	GUIDE HOLDER (A)	1	
249	974-147	GUIDE PLATE	1	
250	949-624	BOLT M8X20 (10 PCS.)	2	
251	949-455	SPRING WASHER M6 (10 PCS.)	2	
252	949-236	MACHINE SCREW M5X10 (10 PCS.)	2	
253	949-453	SPRING WASHER M4 (10 PCS.)	2	
254	974-131	DISC	1	
255	974-130	DISC HOLDER	1	
256	949-753	ROLL PIN D5X20 (10 PCS.)	1	
257	974-132	DISC COVER	1	
258	974-128	PINION SHAFT	1	
259	949-753	ROLL PIN D5X20 (10 PCS.)	1	
260	974-129	PINION	1	
261	949-561	NUT M12 (10 PCS.)	1	
262	988-547	BOLT M12X100	1	

PARTS

CB 100FA

ITEM NO.	CODE NO.	DESCRIPTION	NO. USED	REMARKS
263	974-244	TABLE PIECE	1	
264	949-433	BOLT WASHER M8 (10 PCS.)	2	
265	949-457	SPRING WASHER M8 (10 PCS.)	2	
266	967-594	HIGH TENSION BOLT M8	2	
267	988-494	GUIDE SPRING	1	
268	988-495	BOLT (W/WASHERS) M8X16	2	
269	988-492	GUIDE SPRING ASSY	1	INCLUD.267,268,270-274
270	988-493	GUIDE HOLDER	1	
271	974-142	KNOB (A) M10X40	1	
272	988-532	STOPPER	1	
273	949-457	SPRING WASHER M8 (10 PCS.)	2	
274	949-624	BOLT M8X20 (10 PCS.)	2	
275	949-245	MACHINE SCREW M5X30 (10 PCS.)	2	
277	988-538	SPRING	6	
278	949-555	NUT M5 (10 PCS.)	2	
279	974-197	STABILIZER HOLDER	2	
280	949-413	WING BOLT M8X25 (10 PCS.)	2	
281	986-662	MACHINE SCREW (W/WASHERS) M4X10	1	
282	974-179	ARM PLATE	1	
283	949-626	BOLT M8X25 (10 PCS.)	3	
284	949-457	SPRING WASHER M8 (10 PCS.)	3	
285	974-174	ARM	1	
286	988-545	CORD COVER (C)	1	
287	988-539	STABILIZER SHAFT	1	
288		ROLLER BEARING (NK19/16)	1	
289	949-676	BOLT M6X20 (10 PCS.)	1	
290	949-556	NUT M6 (10 PCS.)	1	
291	932-313	WORM	1	
292	932-316	GEAR	1	
293	974-175	LOCK SCREW	1	
294	949-258	MACHINE SCREW M6X20 (10 PCS.)	1	
295	949-455	SPRING WASHER M6 (10 PCS.)	1	
296	952-407	CLAMP BAR	1	
297	949-556	NUT M6 (10 PCS.)	1	
298	932-315	GEAR SHAFT	1	
299A	988-975	ROUND HANDLE 200MM	1	
300	988-571	CAUTION LABEL (A)	1	
301	949-746	ROLL PIN D5X32 (10 PCS.)	1	
302	965-759	GEAR COVER	1	
303	949-334	FLAT HD. SCREW M5X16 (10 PCS.)	3	
304	965-763	RACK (A)	1	
305	949-626	BOLT M8X25 (10 PCS.)	4	
306	949-457	SPRING WASHER M8 (10 PCS.)	4	
307	949-819	HEX. SOCKET HD. BOLT M5X10 (10 PCS.)	2	
308	949-454	SPRING WASHER M5 (10 PCS.)	2	
309	988-525	INDICATOR COVER ASSY	1	INCLUD.307,308,310,313,320,328-336
310		INDICATOR COVER (B)	1	
311	949-698	BOLT M10X30 (10 PCS.)	1	
312	949-458	SPRING WASHER M10 (10 PCS.)	1	
313	630-0VV	BALL BEARING 6300VVCMAV2S	1	
314A	949-434	BOLT WASHER M10 (10 PCS.)	2	
315	974-180	BEARING SHAFT	1	

PARTS

CB 100FA

ITEM NO.	CODE NO.	DESCRIPTION	NO. USED	REMARKS
316	974-178	POLYVINYL CHLORIDE PLATE (A)	1	
317	949-204	MACHINE SCREW M3X10 (10 PCS.)	2	
318	949-451	SPRING WASHER M3 (10 PCS.)	2	
319	975-573	BLADE SCALE	1	
320		INDICATOR COVER (A)	1	
321	949-568	LOCK NUT M8 (10 PCS.)	4	
322	988-495	BOLT (W/WASHERS) M8X16	2	
323	988-540	HANDLE SPRING	1	
324	988-541	SCREW HOLDER	1	
325	949-247	MACHINE SCREW M5X35 (10 PCS.)	2	
326	949-454	SPRING WASHER M5 (10 PCS.)	2	
327	988-542	ADJUSTING SCREW	1	
328	968-247	HEX. SOCKET SET SCREW M6X10	1	
330	620-1VV	BALL BEARING 6201VVCMP2S	1	
331	988-979	BEARING WHEEL	1	
332	949-254	MACHINE SCREW M6X10 (10 PCS.)	1	
333	949-455	SPRING WASHER M6 (10 PCS.)	1	
334		INDICATOR	1	
335		INDICATOR SHAFT (A)	1	
336	988-579	INDICATOR SHAFT (B)	1	
337	974-196	STABILIZER	2	
338	949-400	WING BOLT M5X25 (10 PCS.)	4	
339	974-195	STABILIZER BASE	1	
340	951-688	BOLT (W/SP.WASHER) M12X40	1	
341	949-698	BOLT M10X30 (10 PCS.)	4	
342	949-458	SPRING WASHER M10 (10 PCS.)	4	
343	974-148	ROLLER ANGLE	2	
344	974-261	NYLON CLIP	1	
345	949-216	MACHINE SCREW M4X10 (10 PCS.)	3	
346	949-453	SPRING WASHER M4 (10 PCS.)	3	
347	949-429	BOLT WASHER M4 (10 PCS.)	3	
348	974-123	RACK HOLDER (A)	1	
349	974-120	TABLE	1	
350	974-786	SCALE (C)	1	
351	974-122	TABLE INSERT	1	
352	949-334	FLAT HD. SCREW M5X16 (10 PCS.)	1	
353	974-149	CONVEYER ROLLER	1	
354	974-755	GUIDE STOPPER	1	
355	974-125	RACK (A)	1	
356	949-660	HEX. SOCKET HD. BOLT M6X20 (10 PCS.)	7	
357	949-455	SPRING WASHER M6 (10 PCS.)	7	
358	974-126	RACK (B)	1	
359	949-624	BOLT M8X20 (10 PCS.)	1	
360	949-457	SPRING WASHER M8 (10 PCS.)	1	
361	949-426	WASHER M8 (10 PCS.)	1	
362	974-124	RACK HOLDER (B)	1	
363	949-656	HEX. SOCKET HD. BOLT M8X20 (10 PCS.)	7	
364	949-457	SPRING WASHER M8 (10 PCS.)	7	
365	949-426	WASHER M8 (10 PCS.)	7	
366	974-198	CORD COVER (A)	1	
367	949-204	MACHINE SCREW M3X10 (10 PCS.)	2	
368	949-451	SPRING WASHER M3 (10 PCS.)	2	

PARTS

CB 100FA

ITEM NO.	CODE NO.	DESCRIPTION	NO. USED	REMARKS
369	974-199	CORD COVER (B)	1	
370	974-778	MICRO SWITCH (C)	1	
371	949-223	MACHINE SCREW M4X25 (10 PCS.)	2	
372	949-453	SPRING WASHER M4 (10 PCS.)	2	
373	974-267	CORD (A)	1	
374		VINYL TUBE (ID12XT0.5X500)	1	
375	986-662	MACHINE SCREW (W/WASHERS) M4X10	18	
376	967-579	NYLON CLIP	7	
377	974-262	CURL CORD	1	
378		VINYL TUBE (ID12XT0.5X1000)	1	
379	986-662	MACHINE SCREW (W/WASHERS) M4X10	1	
380	966-049	NYLON CLIP	1	
381	967-333	TERMINAL BOX	1	
382	966-607	INTERNAL WIRE (D)	1	
383	968-247	HEX. SOCKET SET SCREW M6X10	2	
384	949-639	BOLT M10X25 (10 PCS.)	4	
385	949-458	SPRING WASHER M10 (10 PCS.)	4	
386	959-141	CONNECTOR 50092 (10 PCS.)	6	
387	974-243	MOTOR COVER	1	
388	935-123	CORD CLIP	1	
389	949-216	MACHINE SCREW M4X10 (10 PCS.)	2	
390	949-453	SPRING WASHER M4 (10 PCS.)	2	
391	973-313	NYLON CLIP	6	
392	988-544	INSULATING SEAT	1	
393	974-269	MICRO SWITCH (D)	1	
394	949-451	SPRING WASHER M3 (10 PCS.)	2	
395	949-207	MACHINE SCREW M3X16 (10 PCS.)	2	
396	974-788	CAP	2	
397	948-614	NYLON CLIP	4	
398	988-527	SHIELD WIRE (5C)	1	
399A	974-206	PULLEY (C)	1	SINCE 3.1984
400	975-585	TAPE CORD (B)	1	
401	949-553	NUT M3 (10 PCS.)	4	
402	974-762	TAPE CORD HOLDER	1	
403	949-211	MACHINE SCREW M3X30 (10 PCS.)	4	
404	949-451	SPRING WASHER M3 (10 PCS.)	4	
405	964-637	GROMMET	1	
406	988-577	MOTOR (THREE PHASE) 230V	1	HITACHI MOTOR 3.7KW EFQUP-K 4P
407	949-574	LOCK NUT M12 (10 PCS.)	1	
408	949-561	NUT M12 (10 PCS.)	1	
409	974-150	MOTOR BASE	1	
410	949-560	NUT M10 (10 PCS.)	1	
411	967-786	BOLT M10	1	
412	949-560	NUT M10 (10 PCS.)	4	
413	974-242	BOLT M12X180	1	
414	974-268	CORD (A)	1	
415	988-536	MICRO SWITCH (E)	1	
416	949-453	SPRING WASHER M4 (10 PCS.)	2	
417	949-223	MACHINE SCREW M4X25 (10 PCS.)	2	
418	974-189	POLYVINYL CHLORIDE COVER	1	
419	949-553	NUT M3 (10 PCS.)	2	
420	949-204	MACHINE SCREW M3X10 (10 PCS.)	4	

PARTS

CB 100FA

ITEM NO.	CODE NO.	DESCRIPTION	NO. USED	REMARKS
421	949-451	SPRING WASHER M3 (10 PCS.)	4	
422	974-208	V-BELT (B-64) FOR 3.7KW	2	
423	988-537	SCALE	1	
424	949-453	SPRING WASHER M4 (10 PCS.)	1	
425	988-499	STABILIZER HOLDER (A)	1	
426	988-500	STABILIZER HOLDER (B)	1	
427	988-504	UPPER SAW COVER (A)	1	
428	988-505	LOWER SAW COVER (A)	1	
429	949-254	MACHINE SCREW M6X10 (10 PCS.)	3	
430	949-455	SPRING WASHER M6 (10 PCS.)	3	
451	988-513	LED PRINTED CIRCUIT BOARD	1	
452	975-144	CABLE TIE	19	
453	988-514	CONNECTOR SOCKET (B)	1	
454	949-216	MACHINE SCREW M4X10 (10 PCS.)	4	
455	949-453	SPRING WASHER M4 (10 PCS.)	4	
456	949-423	WASHER M4 (10 PCS.)	8	
457	974-239	CLAMP (DKN-10)	1	
458	974-255	CLAMP (DKN-13)	1	
459	975-450	CONNECTOR SOCKET (D)	1	
460	975-451	CONNECTOR SOCKET (C)	1	
461	974-266	CORD LOCK (NC-2)	1	
462	972-172	FUSE HOLDER	1	
463	976-269	FUSE	1	
464	974-232	COLLAR	4	
465	988-552	RELAY BASE	1	
466	949-553	NUT M3 (10 PCS.)	4	
467	974-238	CLAMP (DKN-16)	1	
468	949-202	MACHINE SCREW M3X6 (10 PCS.)	4	
469	949-451	SPRING WASHER M3 (10 PCS.)	4	
470	975-588	MACHINE SCREW (W/SP.WASHER) M3X20	4	
471	988-567	MAIN SWITCH	1	
472	988-551	FILTER	1	
473	949-453	SPRING WASHER M4 (10 PCS.)	2	
474	949-216	MACHINE SCREW M4X10 (10 PCS.)	2	
475	988-573	TRANSFORMER ASS'Y	1	
476	949-216	MACHINE SCREW M4X10 (10 PCS.)	3	
477	949-453	SPRING WASHER M4 (10 PCS.)	3	
478	975-445	TIMER TERMINAL	1	
479	949-219	MACHINE SCREW M4X16 (10 PCS.)	2	
480	949-453	SPRING WASHER M4 (10 PCS.)	2	
481	949-423	WASHER M4 (10 PCS.)	8	
482	974-265	CORD LOCK (NC-1)	3	
483	988-574	RELAY	1	
484	949-221	MACHINE SCREW M4X20 (10 PCS.)	4	
485	949-453	SPRING WASHER M4 (10 PCS.)	4	
486	966-585	TERMINAL PLATE (A)	1	
487	949-219	MACHINE SCREW M4X16 (10 PCS.)	2	
488	949-453	SPRING WASHER M4 (10 PCS.)	2	
489	988-568	LABEL (A)	1	
490	988-503	ACRYLIC PLATE	1	
491	949-202	MACHINE SCREW M3X6 (10 PCS.)	2	
492	949-451	SPRING WASHER M3 (10 PCS.)	2	

PARTS

CB 100FA

ITEM NO.	CODE NO.	DESCRIPTION	NO. USED	REMARKS
493	974-188	LED PACKING	1	
494	988-576	LABEL (D)	1	
495	988-570	LABEL (E)	1	
496	988-569	LABEL (C)	1	
497	988-575	LABEL (B)	1	
498	988-560	CONSOLE BOX	1	
499	974-222	CLEAR SWITCH	1	
500	988-507	PILOT LAMP ASSY (WHITE)	1	INCLUD.507
501	988-508	PILOT LAMP ASSY (GREEN)	1	INCLUD.507
502	988-534	MOMENTARY SWITCH (RED)	1	
503	988-535	MOMENTARY SWITCH (GREEN)	1	
504	974-255	CLAMP (DKN-13)	1	
505	988-840	TIMER	1	
506	974-121	TABLE PLATE	1	
507	988-978	LAMP	1	

STANDARD ACCESSORIES

ITEM NO.	CODE NO.	DESCRIPTION	NO. USED	REMARKS
601	972-043	WRENCH 10/13MM	1	
602	974-254	WRENCH 17/19MM	1	
603	872-422	HEX. BAR WRENCH 6MM	1	
604	955-857	HEX. BAR WRENCH 8MM	1	
605	966-821	BOX WRENCH 13MM	1	

OPTIONAL ACCESSORIES

ITEM NO.	CODE NO.	DESCRIPTION	NO. USED	REMARKS
701	948-583	MITER GAUGE	1	
702	974-101	BAND SAW BLADE (B)	1	

