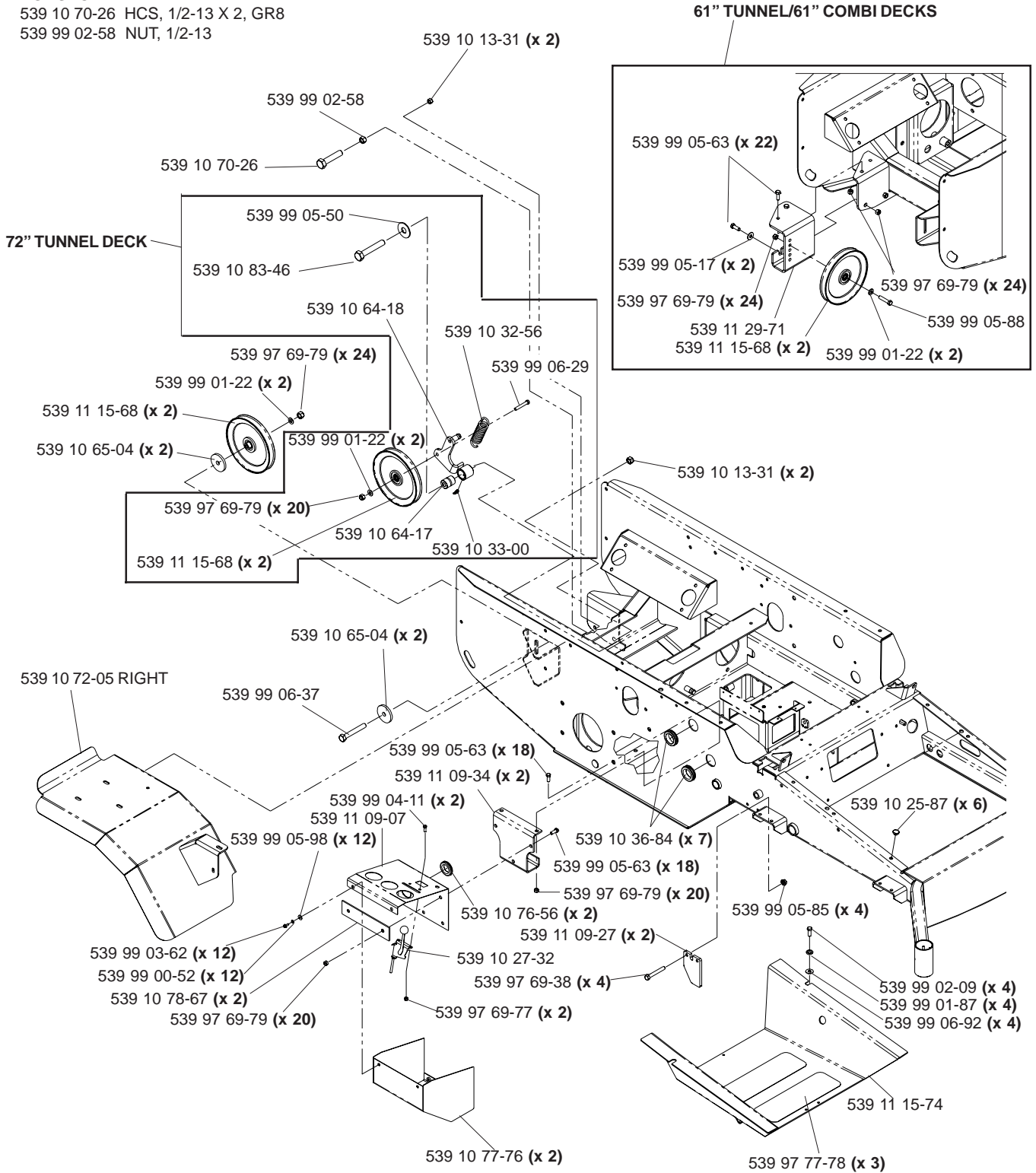


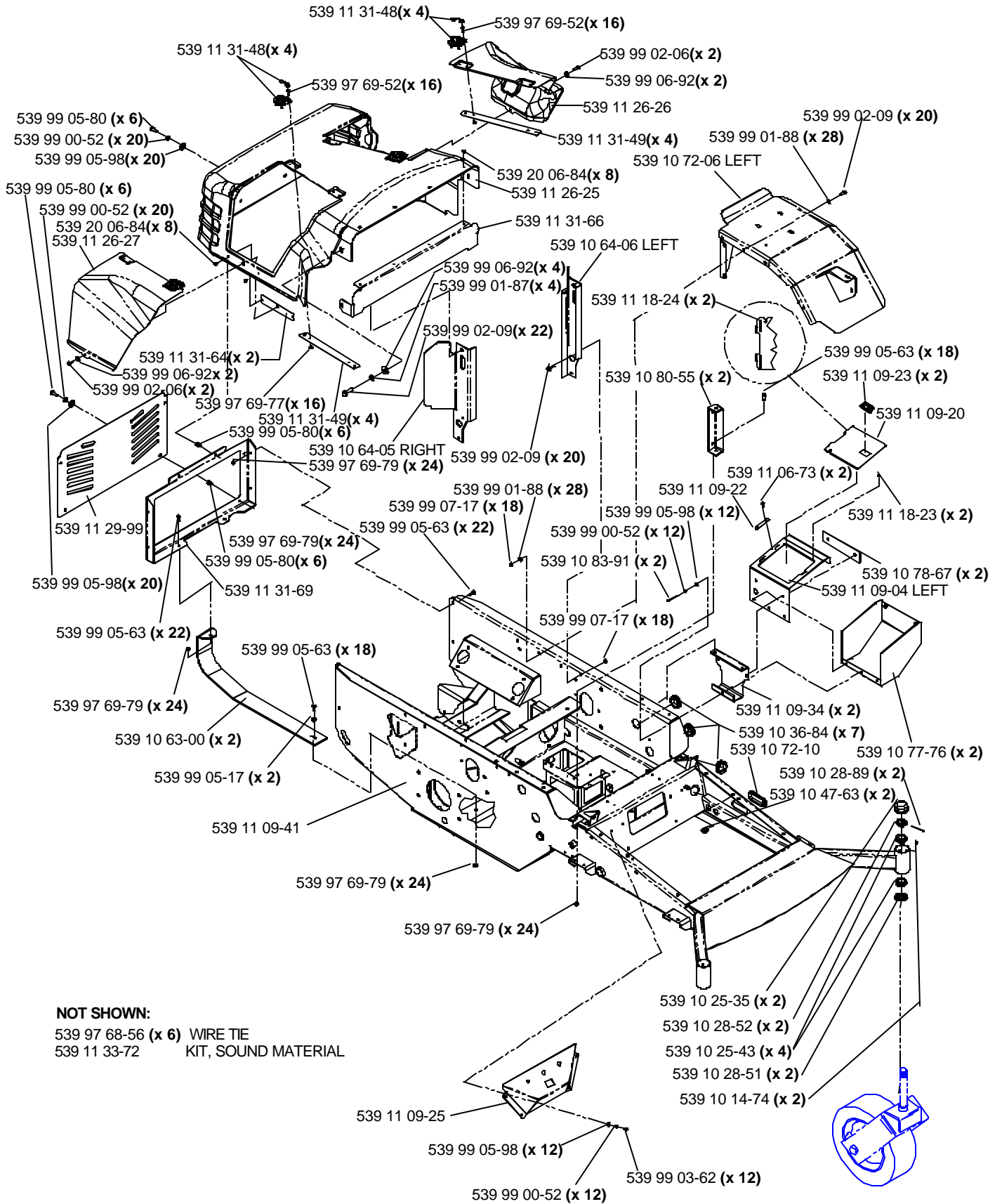
MAIN FRAME ASSEMBLY

NOT SHOWN:

- 539 10 70-26 HCS, 1/2-13 X 2, GR8
- 539 99 02-58 NUT, 1/2-13

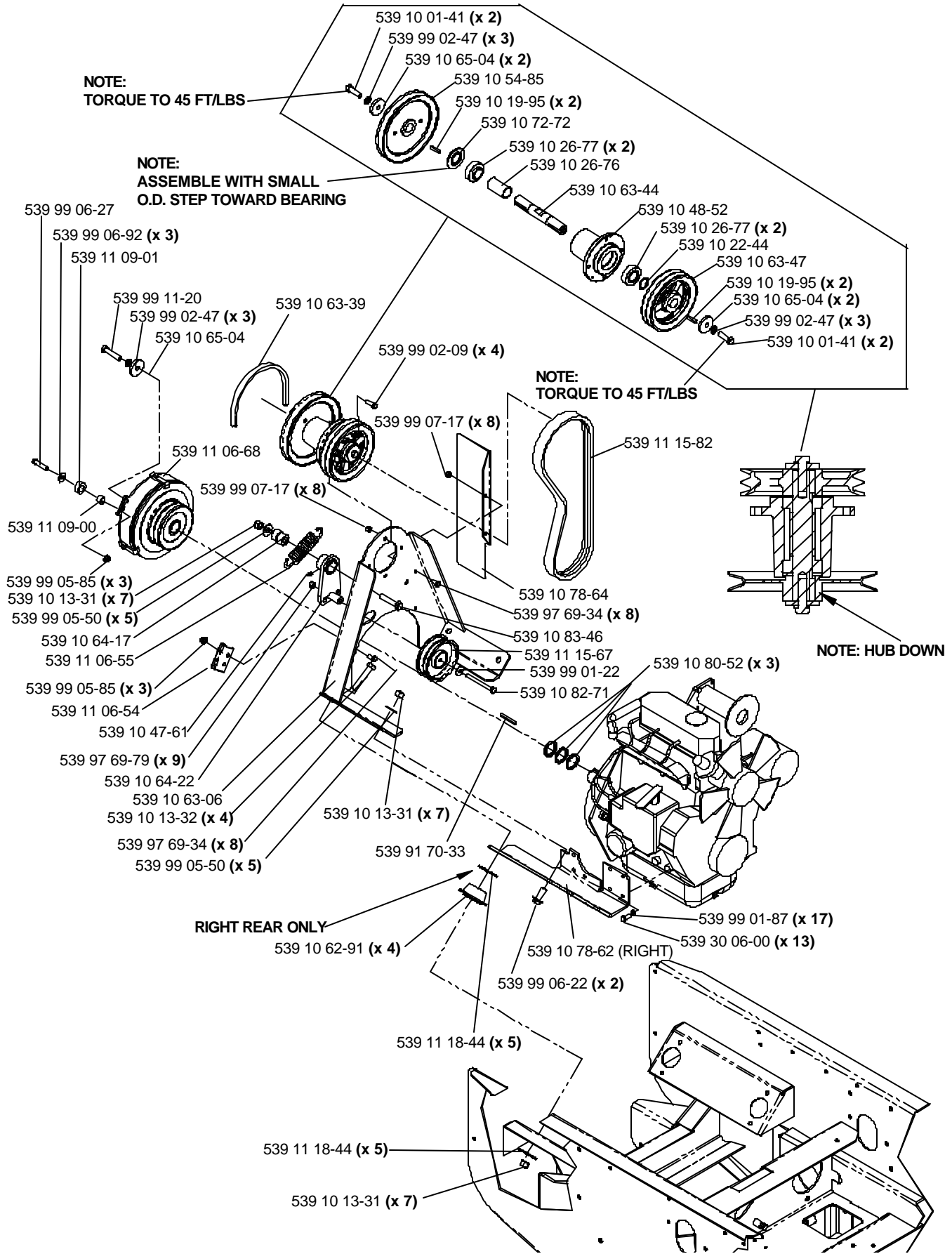


MAIN FRAME ASSEMBLY



ENGINE ASSEMBLY

34 H.P.



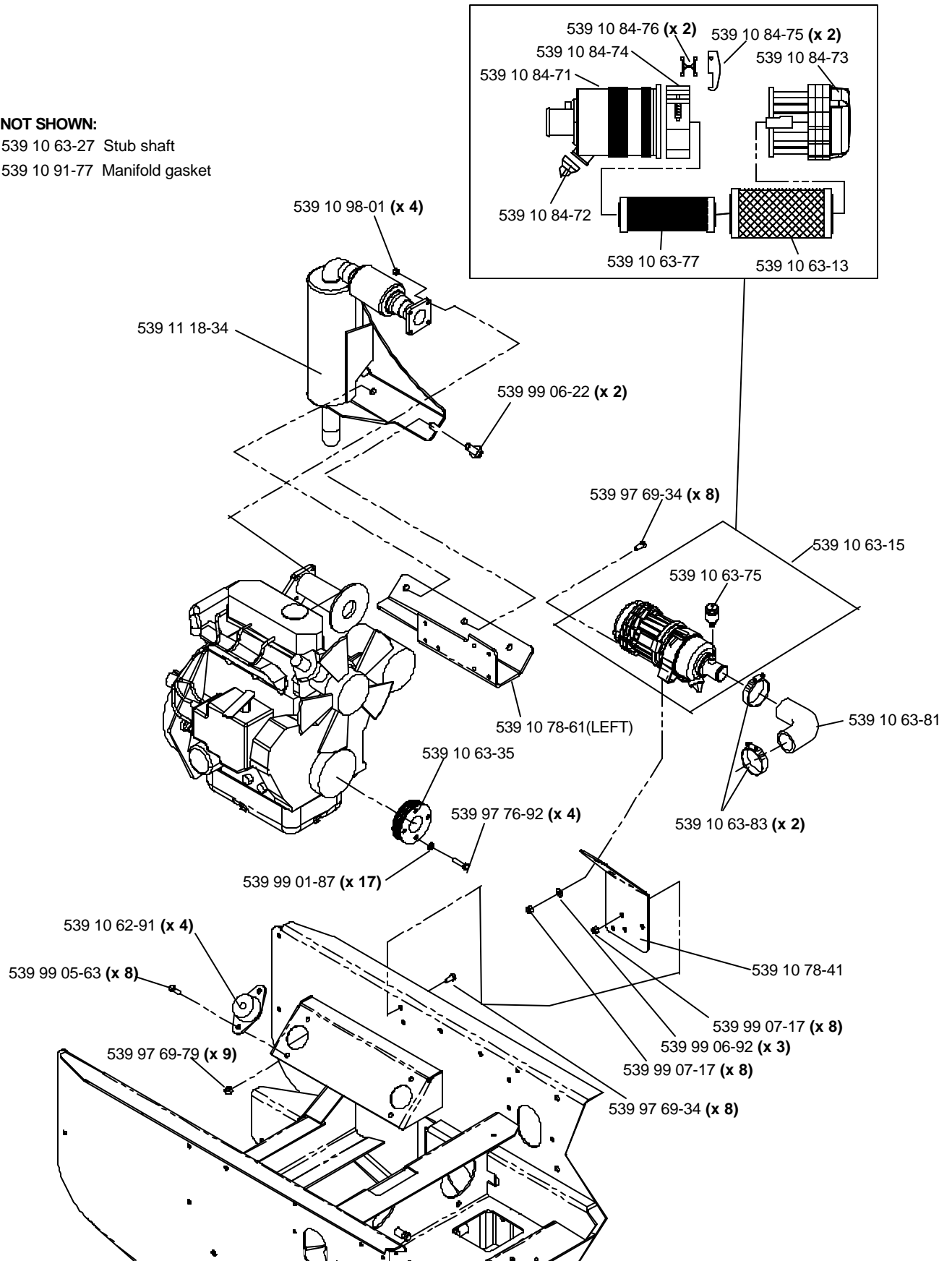
ENGINE ASSEMBLY

34 H.P.

NOT SHOWN:

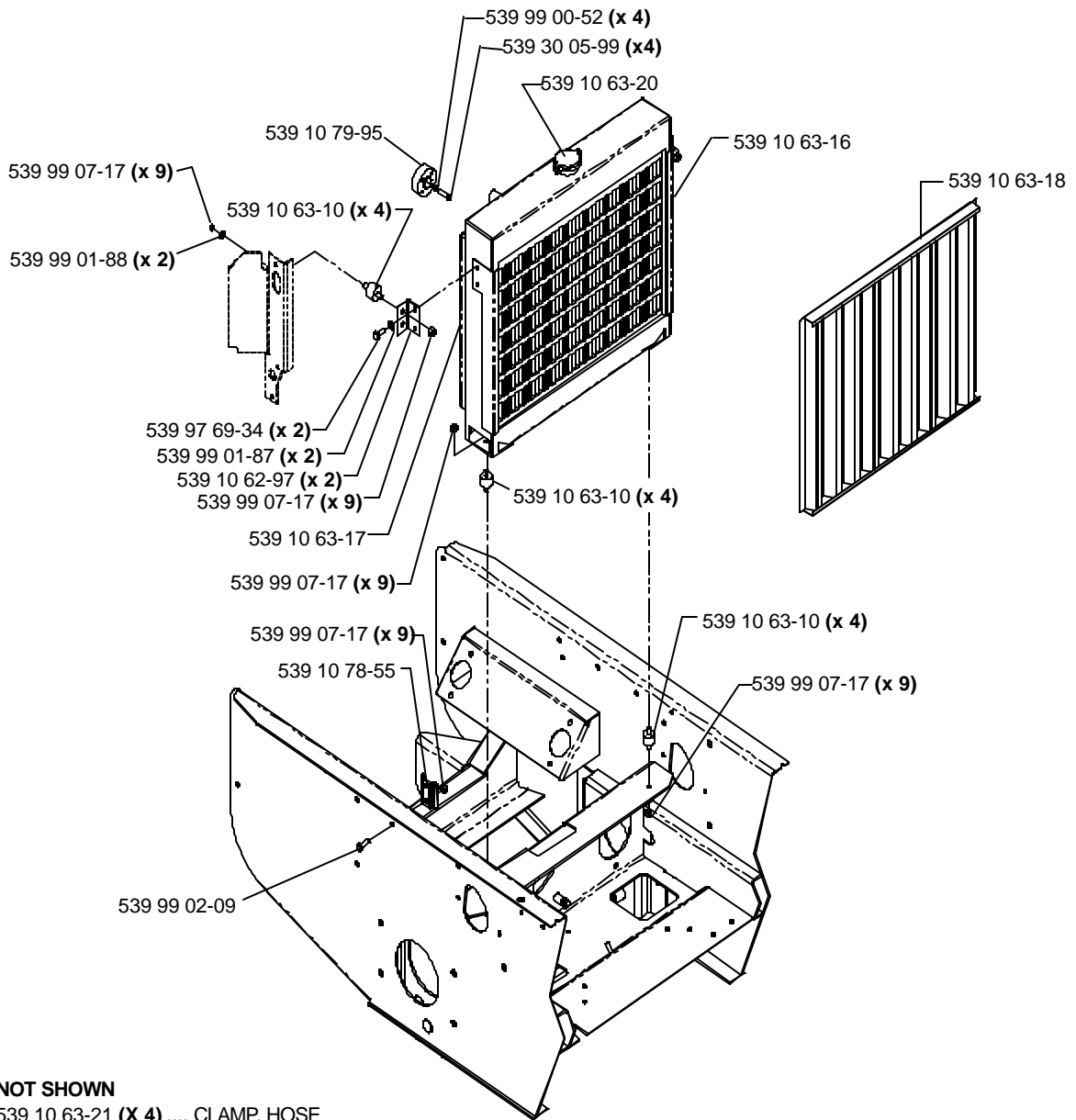
539 10 63-27 Stub shaft

539 10 91-77 Manifold gasket



RADIATOR

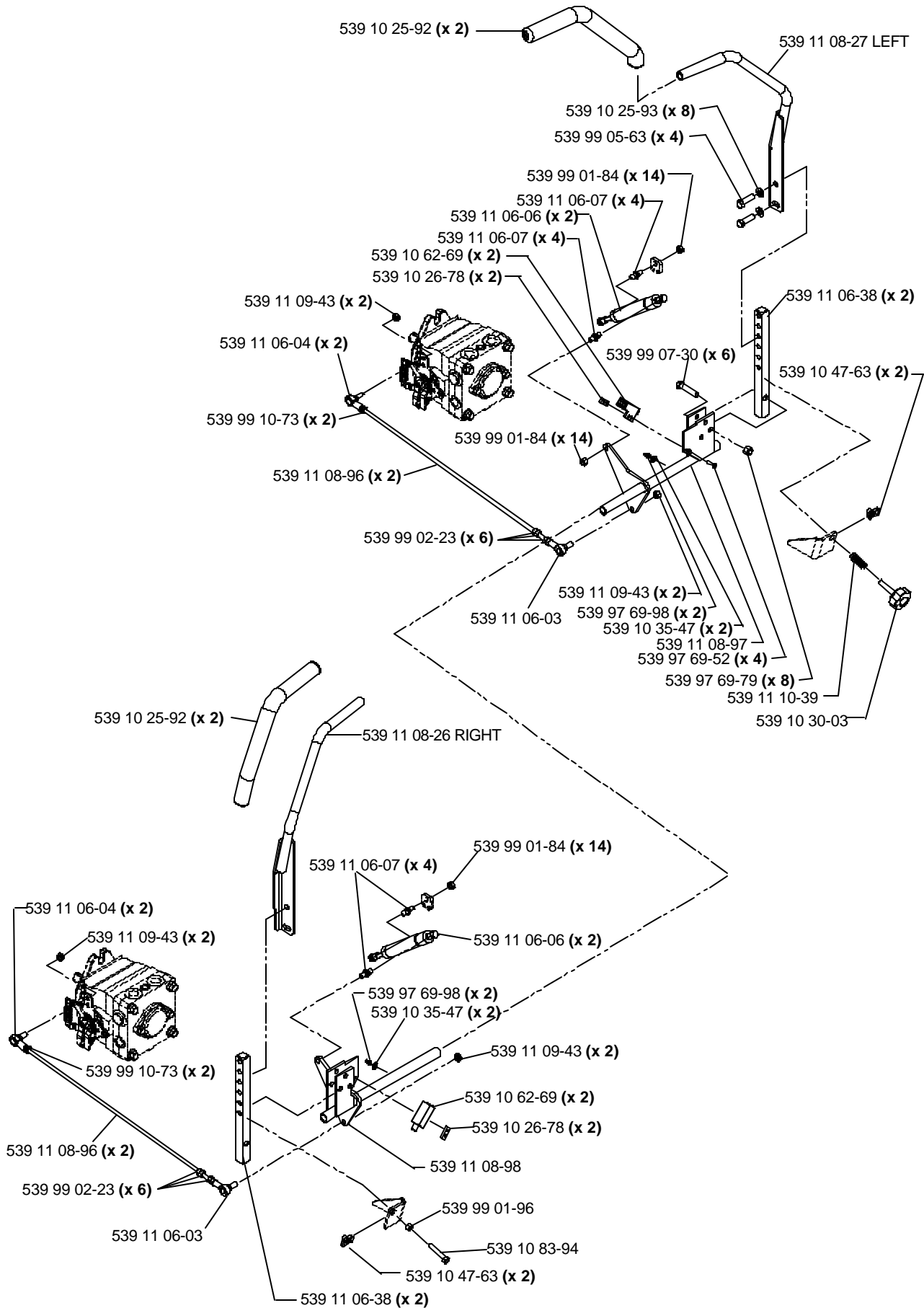
34 H.P.



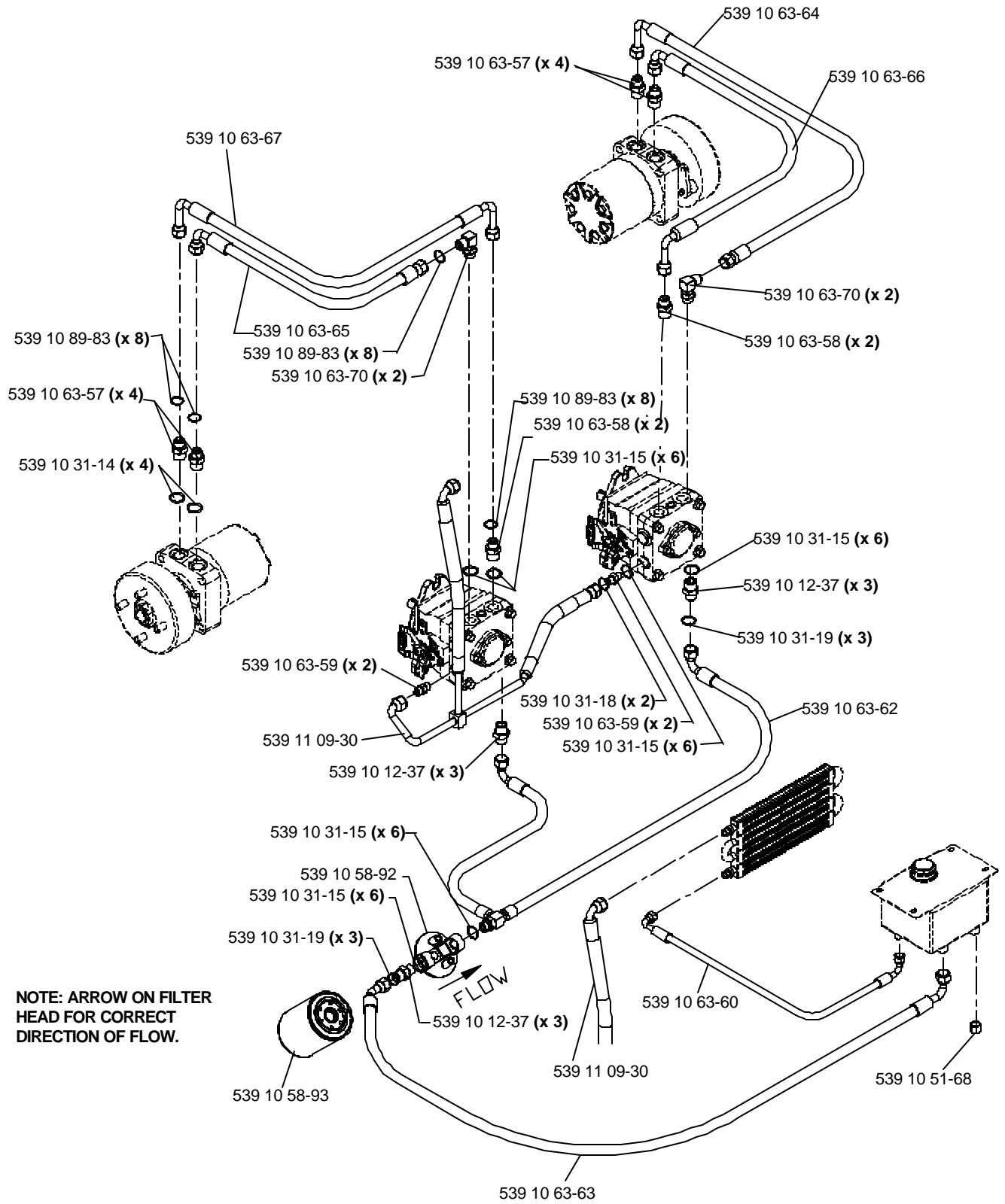
NOT SHOWN

- 539 10 63-21 (X 4) CLAMP, HOSE
- 539 10 63-26 HOSE, LOWER
- 539 10 63-25 HOSE, UPPER
- 539 10 64-02 OVERFLOW RESERVOIR
- 539 10 63-22 (X 2) DRAIN, RADIATOR

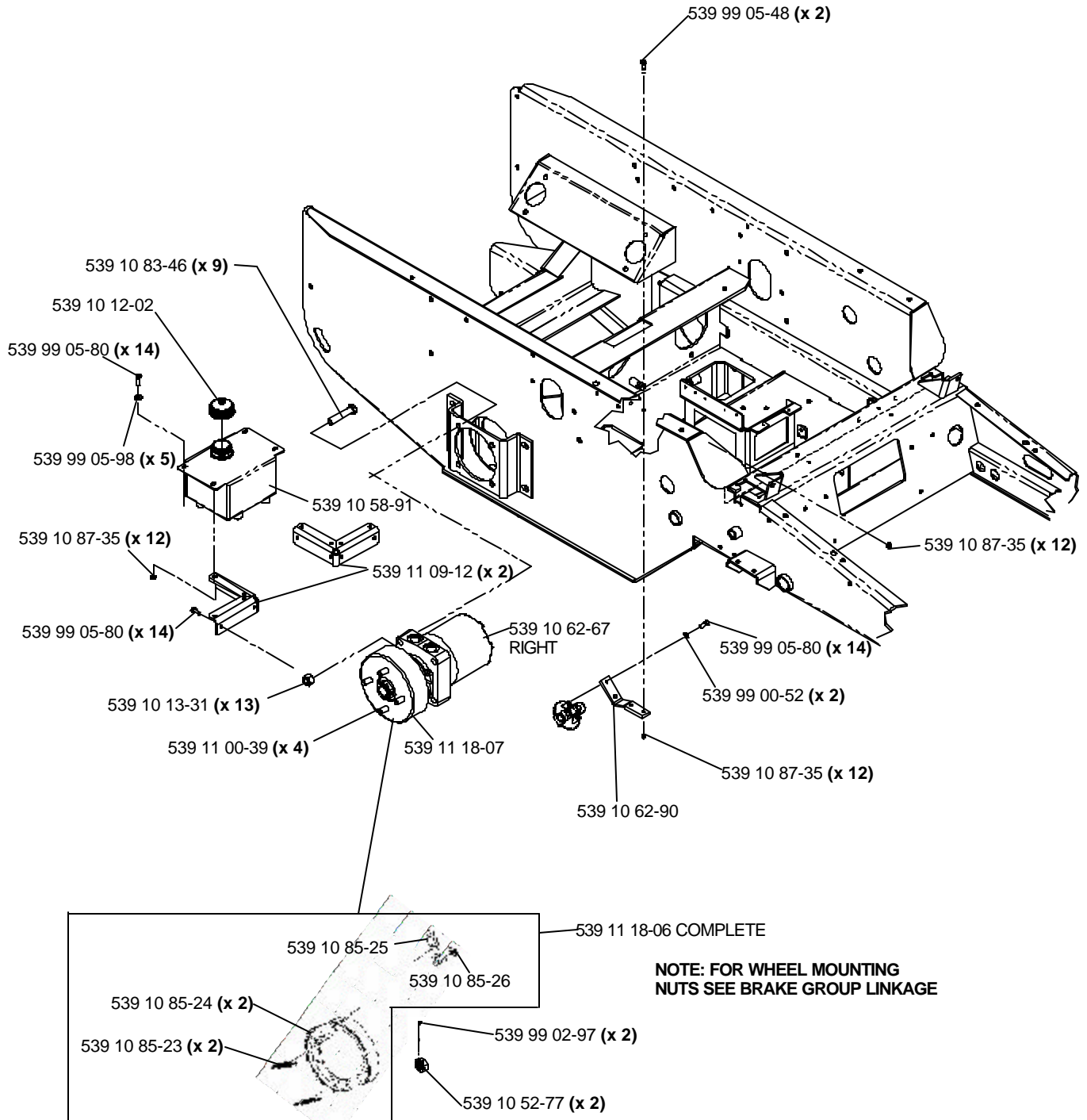
MOTION CONTROL



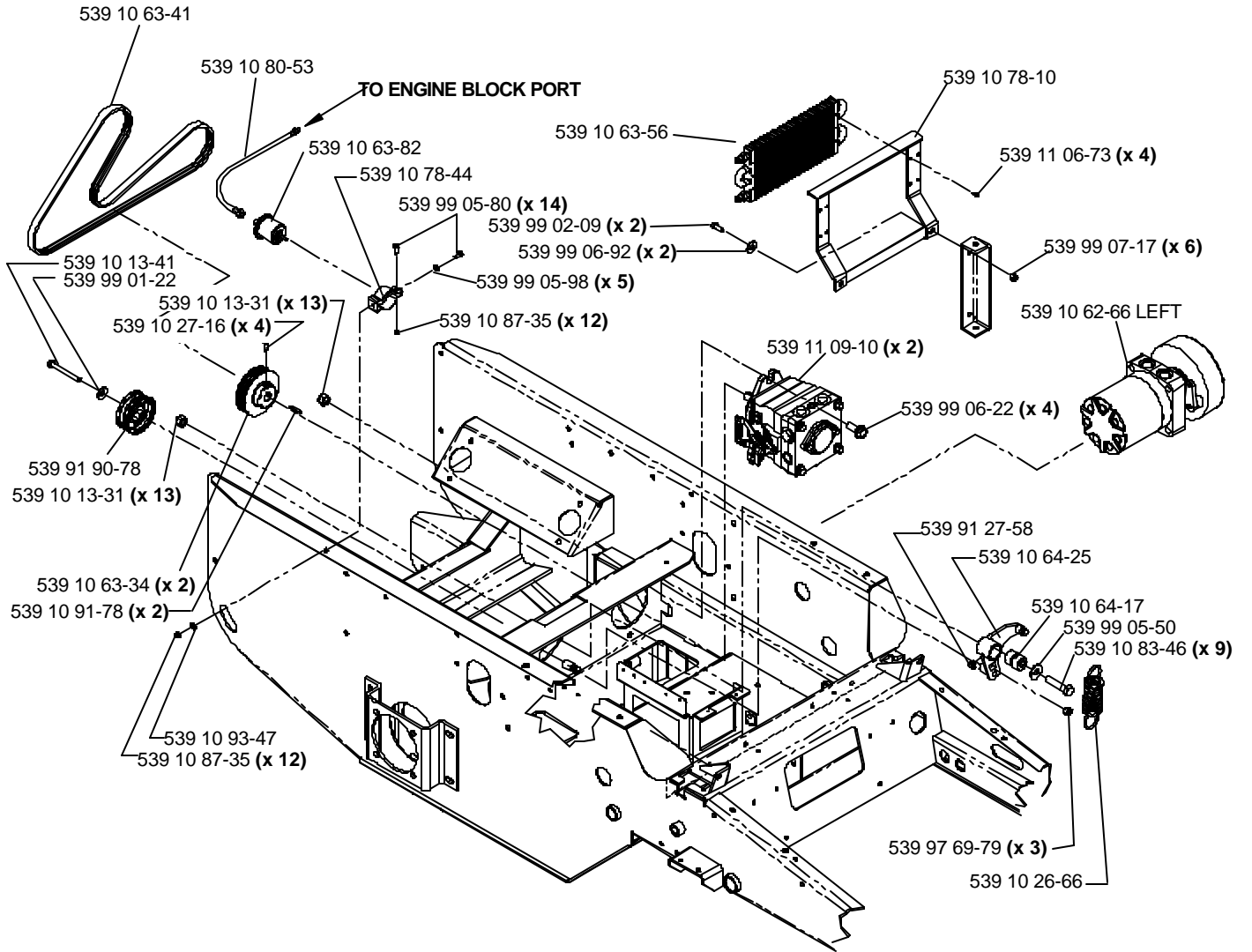
HYDRAULIC HOSES AND FITTINGS



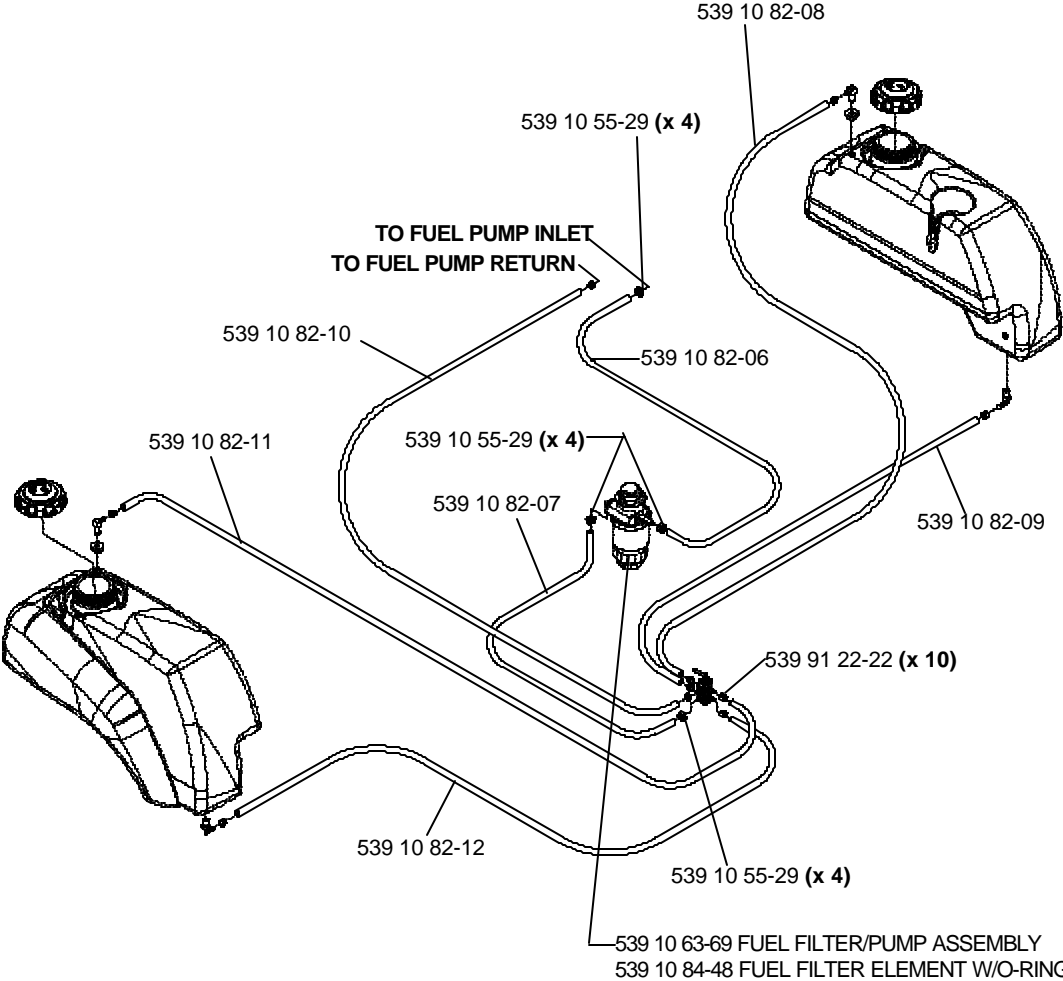
HYDRAULIC ASSEMBLY



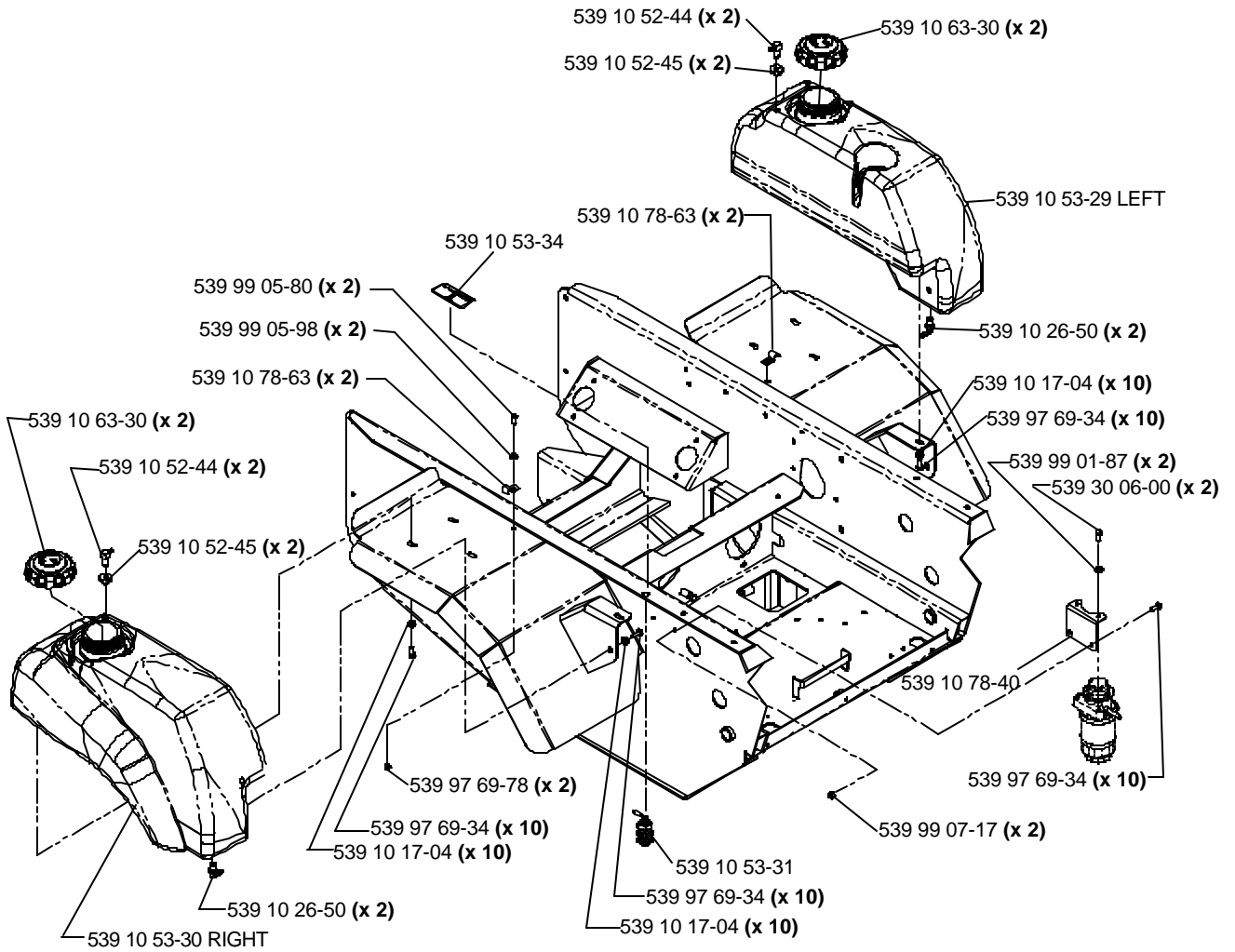
HYDRAULIC ASSEMBLY



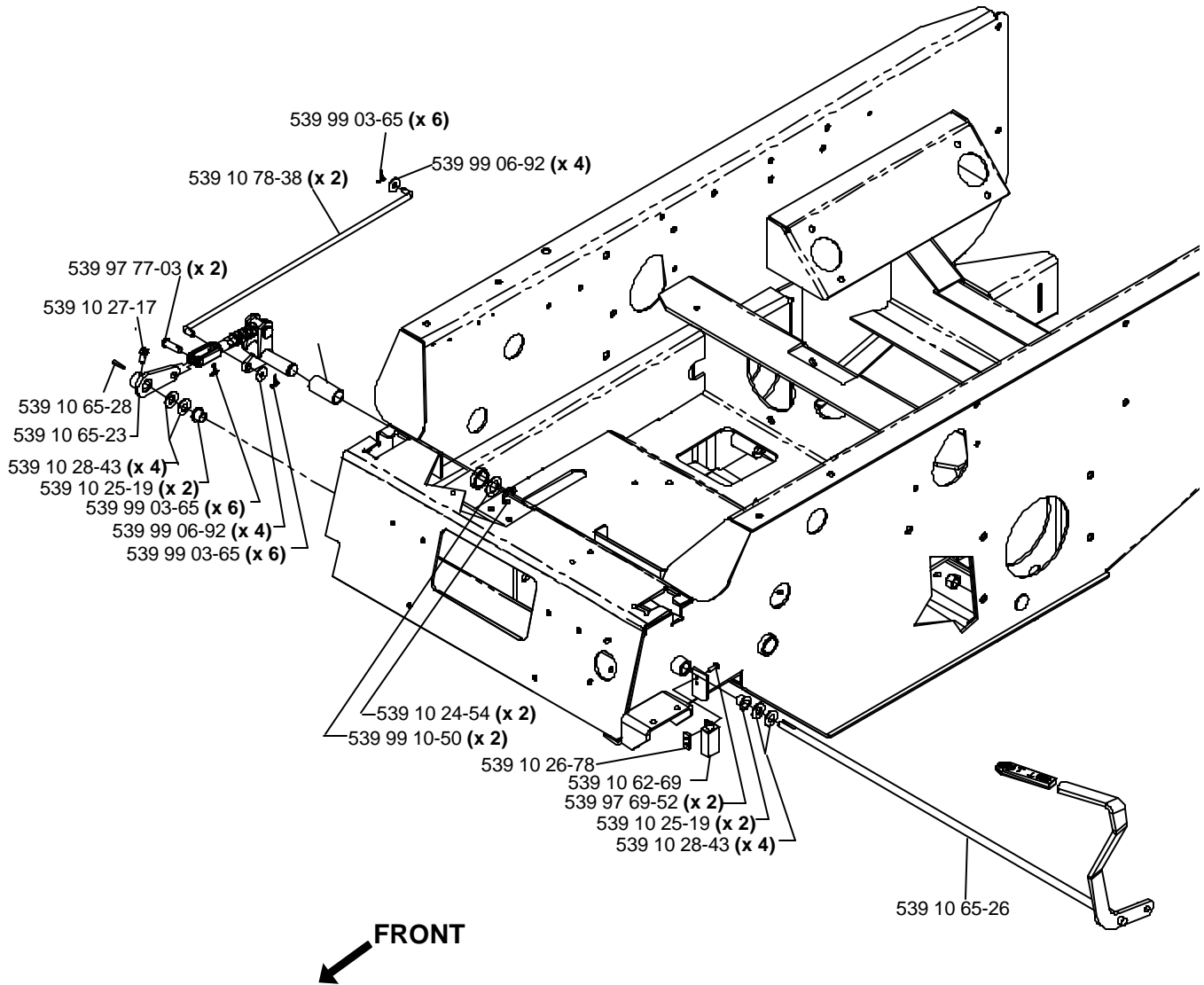
FUEL GROUP



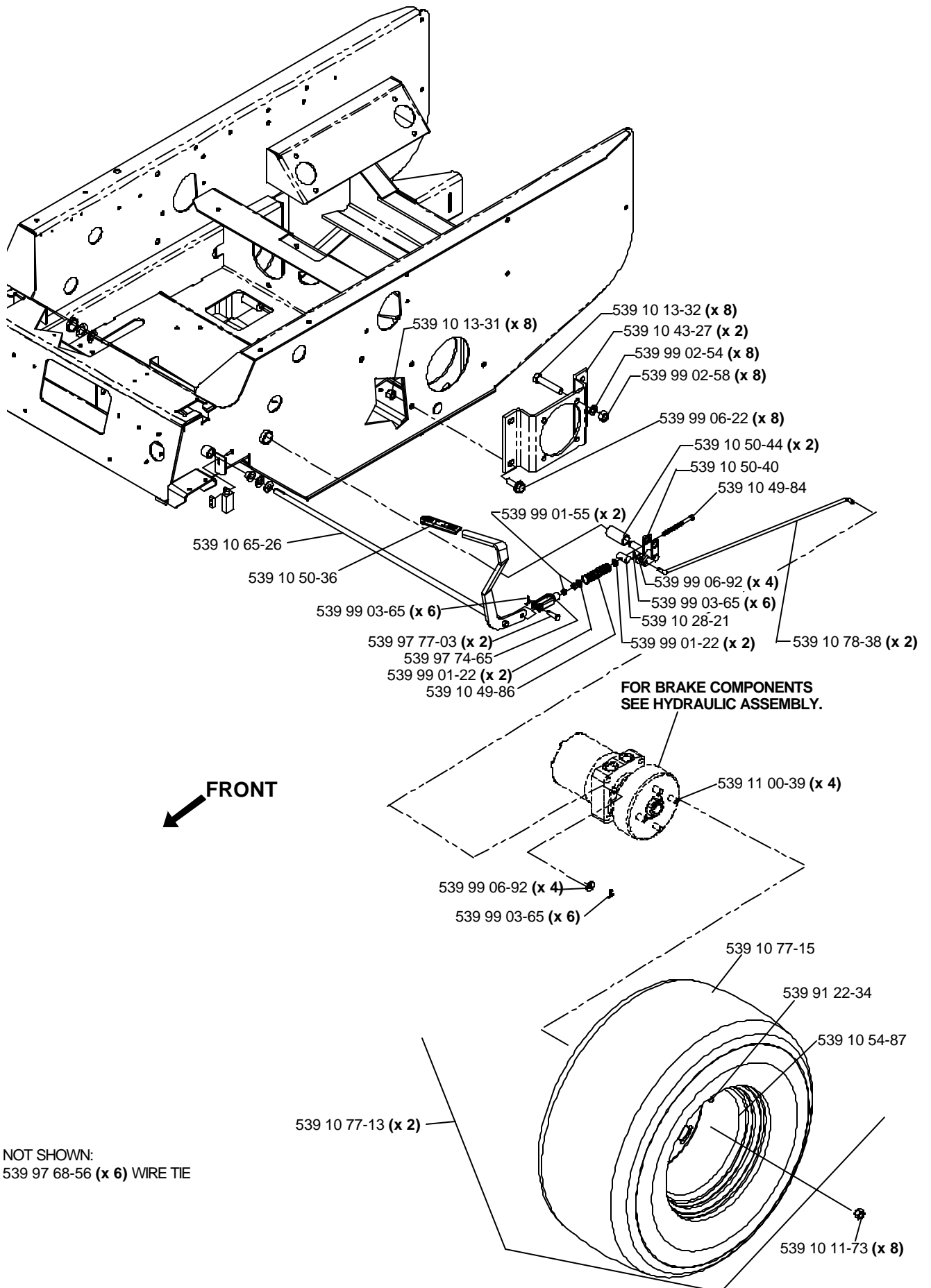
FUEL GROUP



BRAKE GROUP LINKAGE



BRAKE GROUP LINKAGE

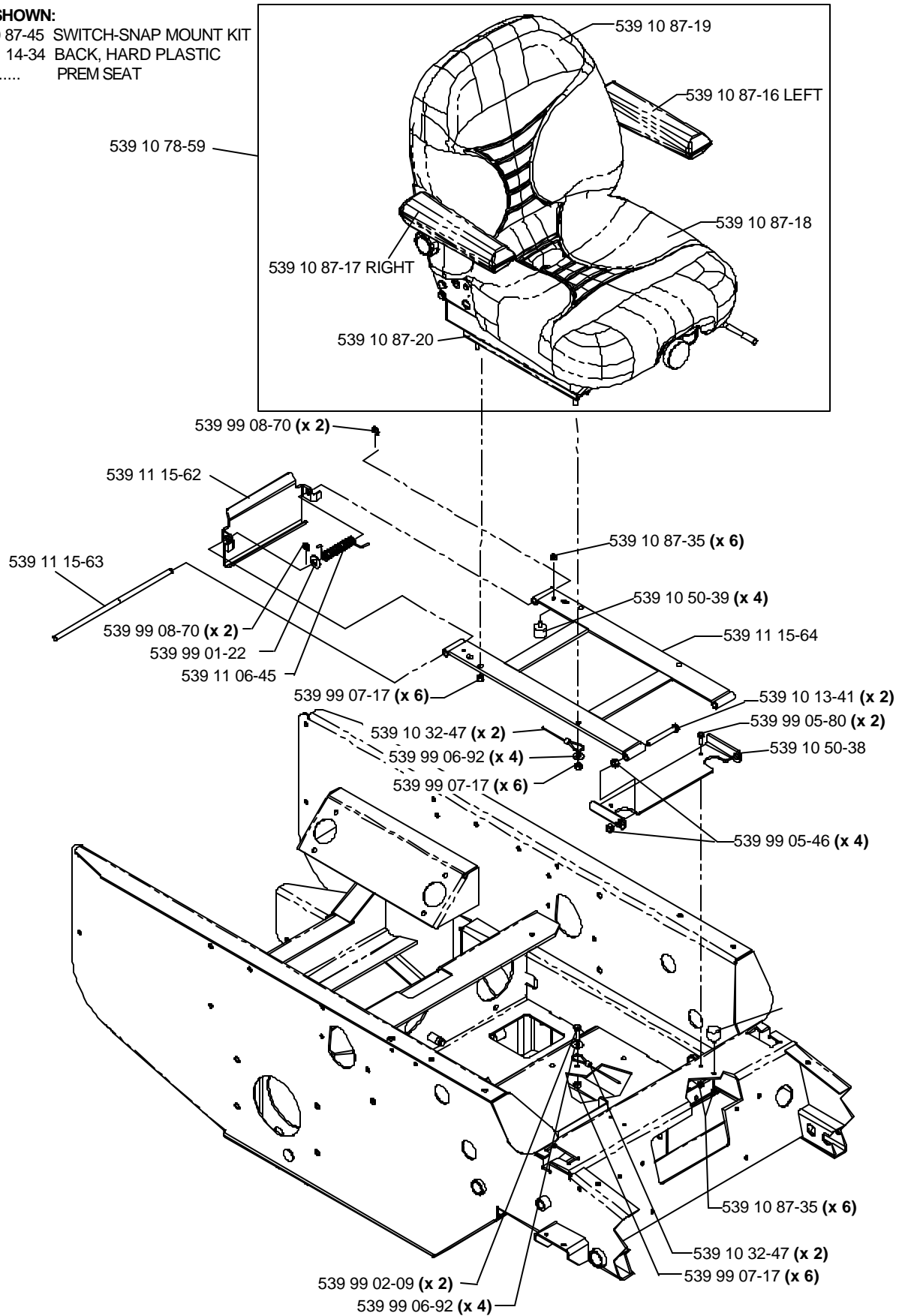


NOT SHOWN:
539 97 68-56 (x 6) WIRE TIE

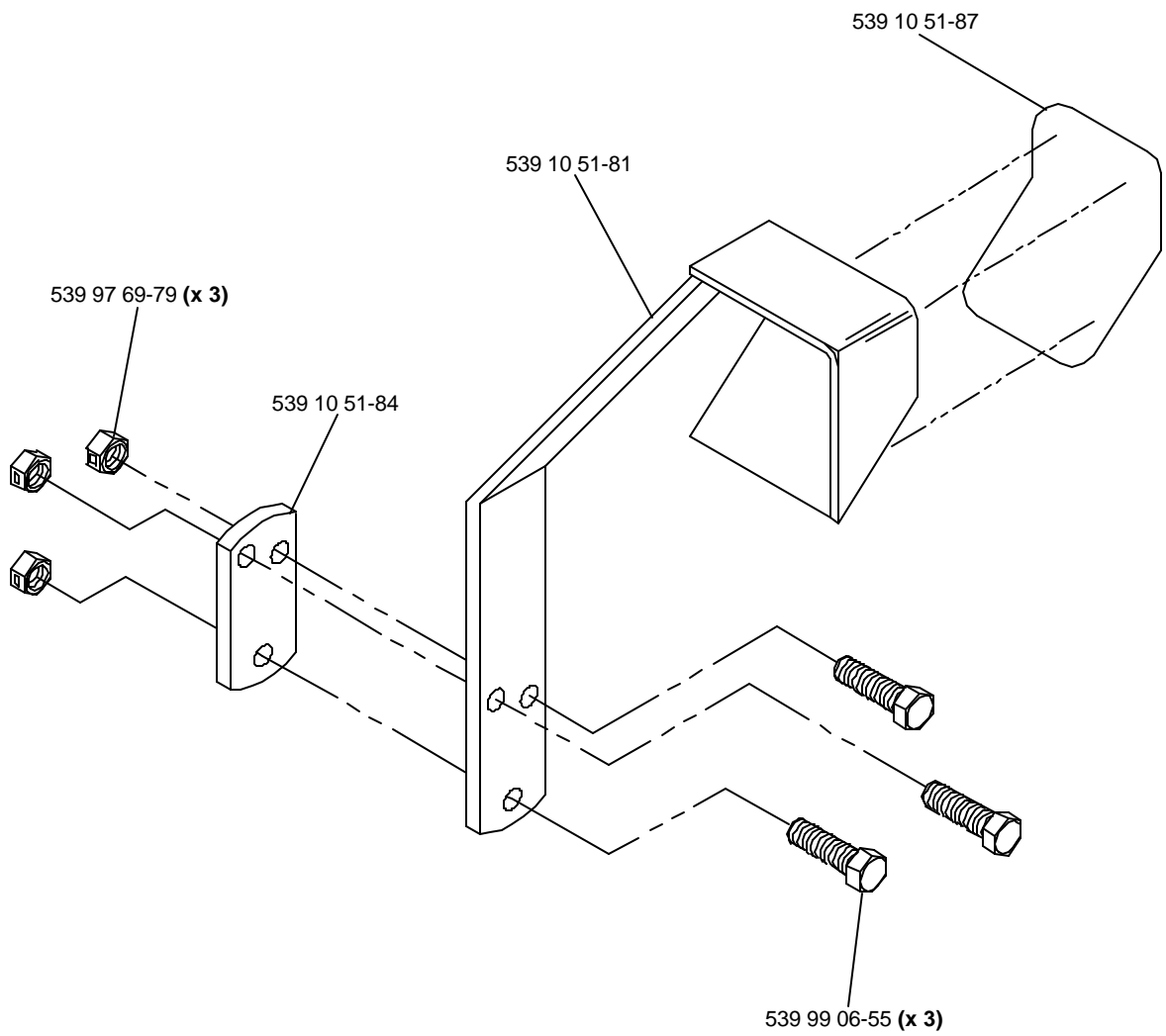
SEAT ASSEMBLY

NOT SHOWN:

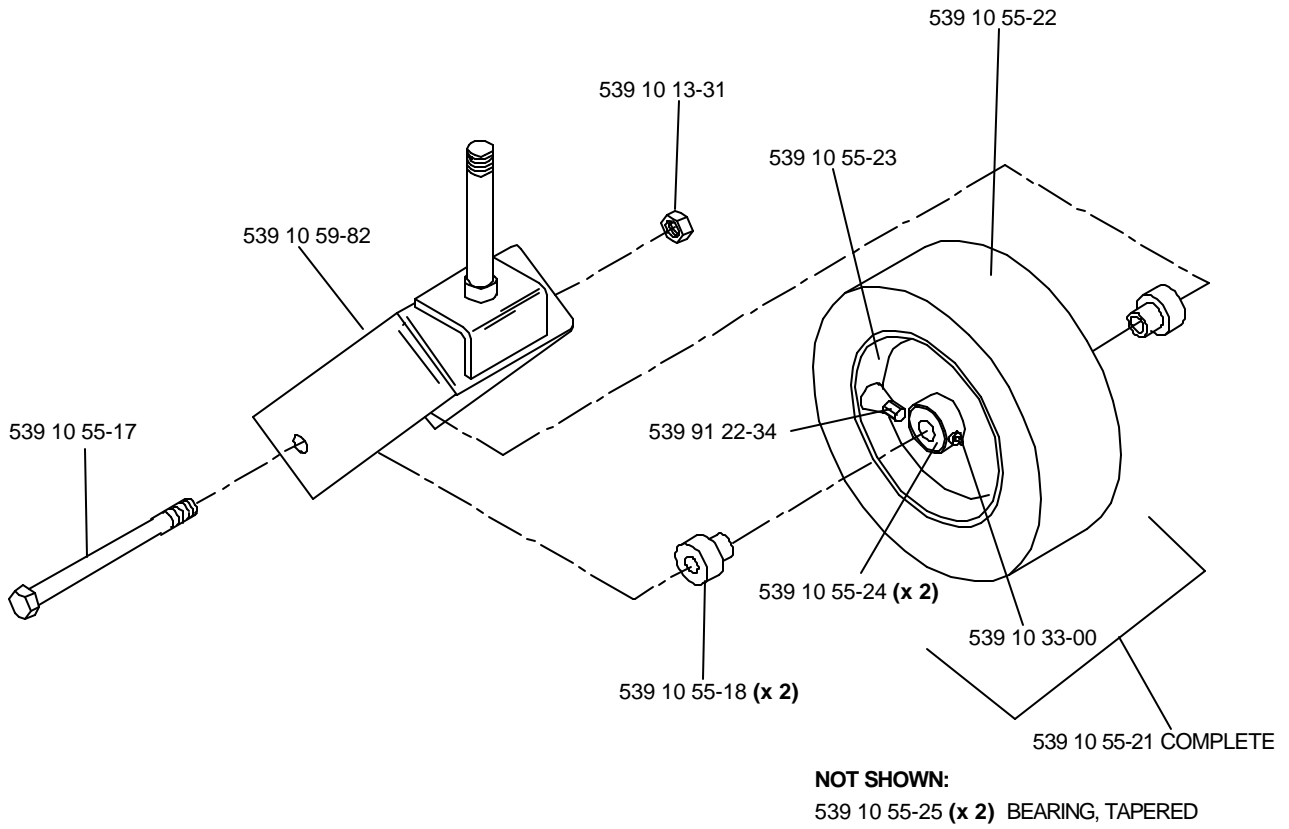
- 539 10 87-45 SWITCH-SNAP MOUNT KIT
- 539 11 14-34 BACK, HARD PLASTIC
- PREM SEAT



FOOT PEDAL



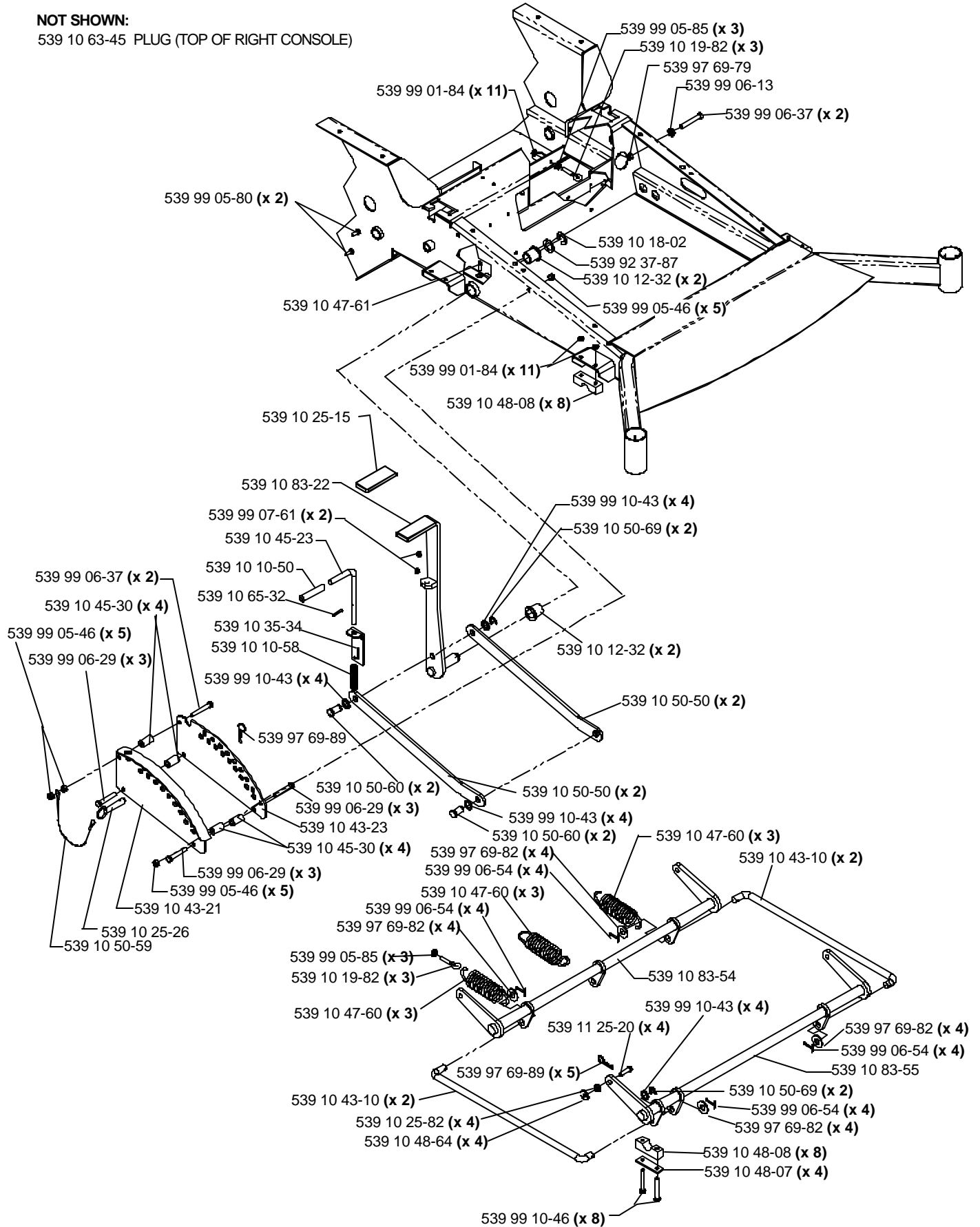
CASTER ASSEMBLY



DECK LIFT MANUAL

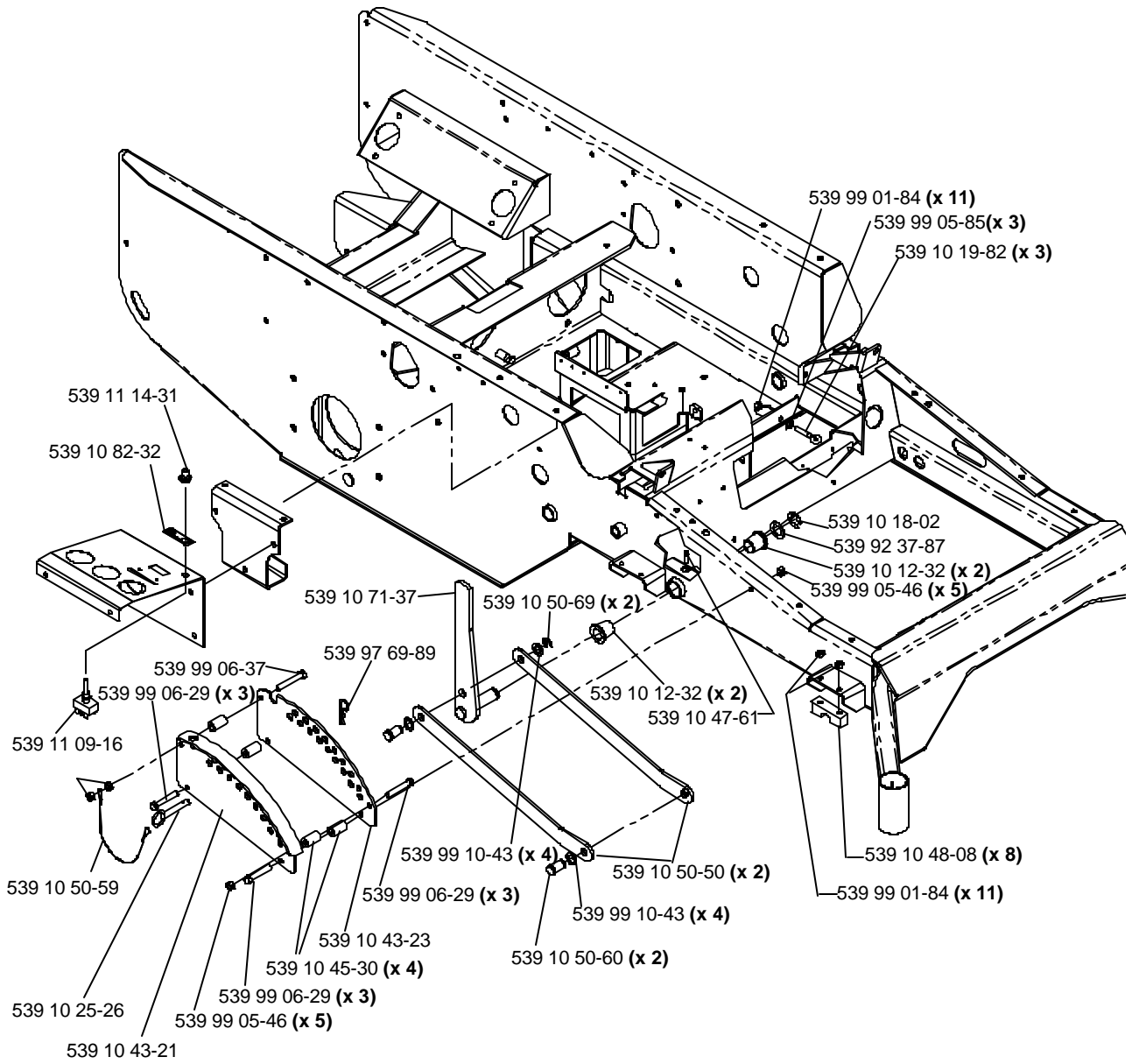
NOT SHOWN:

539 10 63-45 PLUG (TOP OF RIGHT CONSOLE)



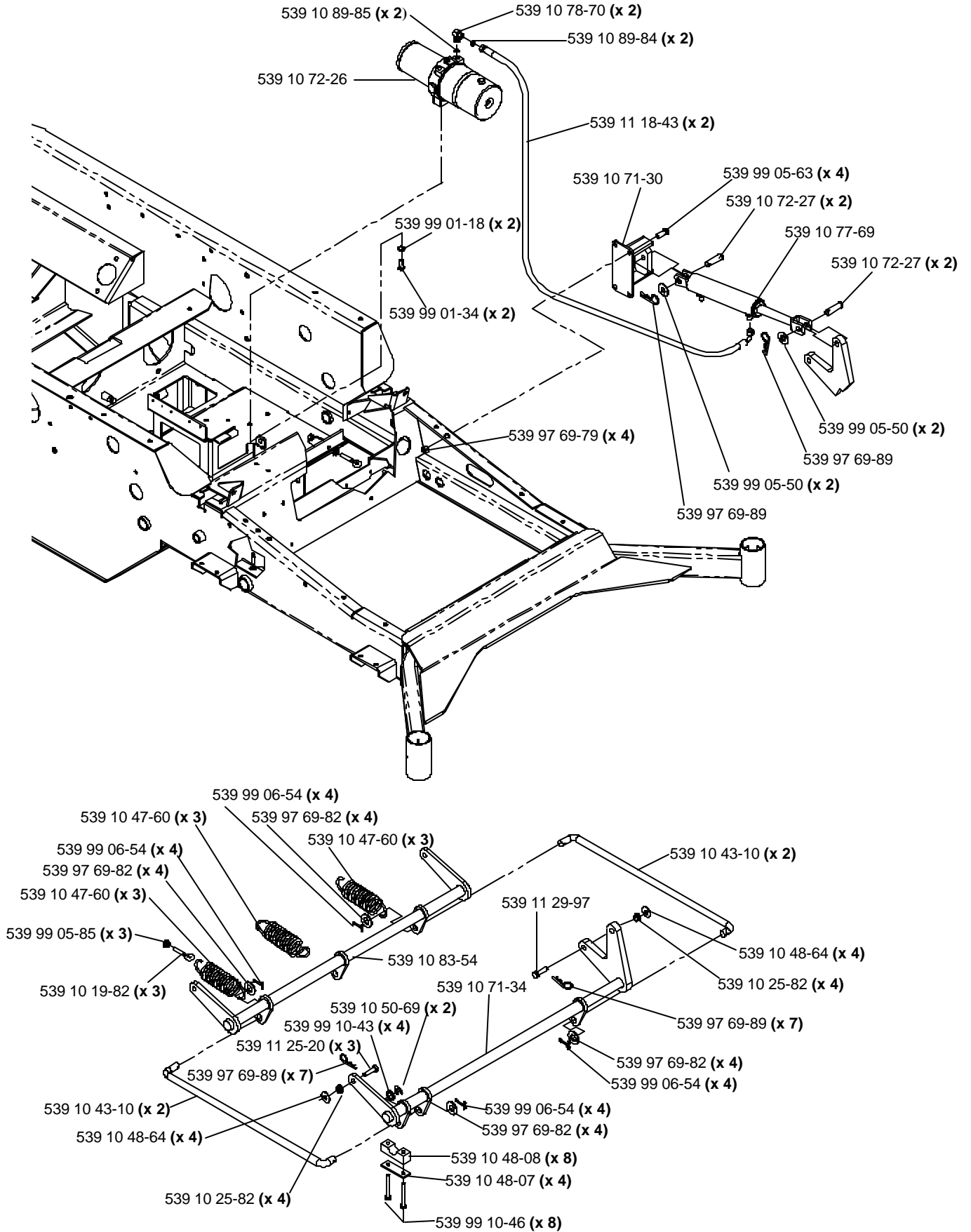
DECK LIFT

POWER



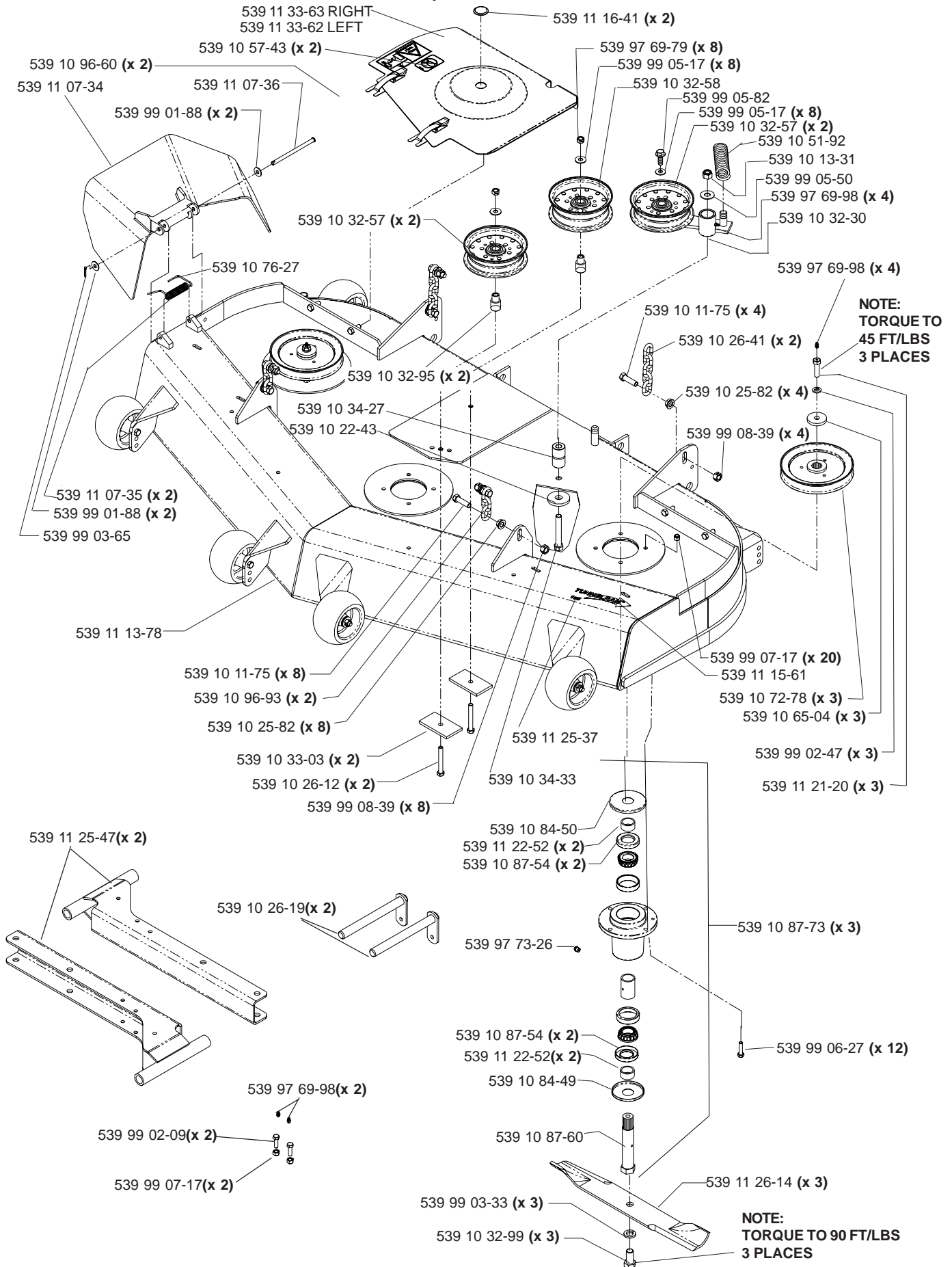
DECK LIFT

POWER



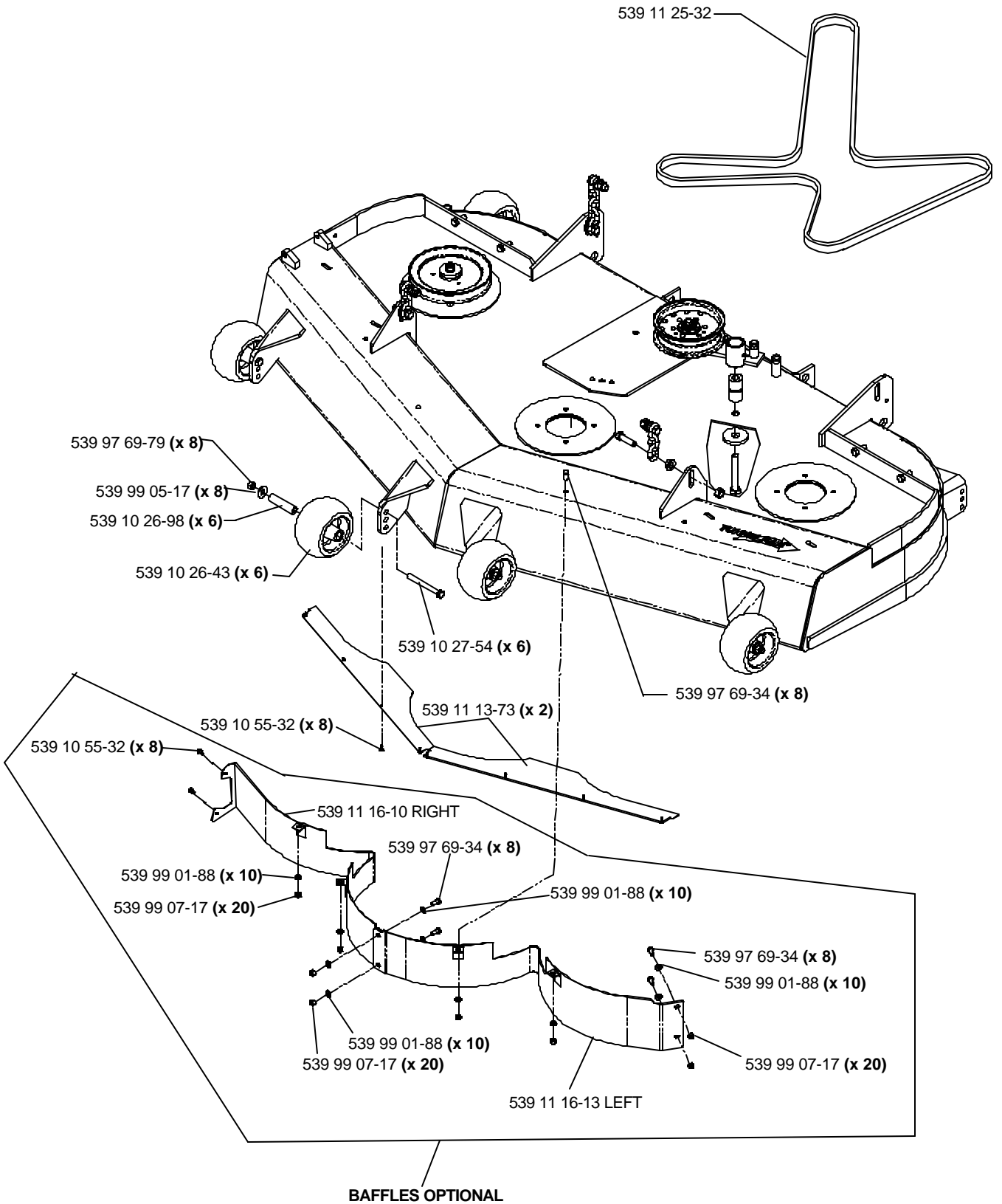
DECK ASSEMBLY

968999345, TRD61B - 61 INCH



DECK ASSEMBLY

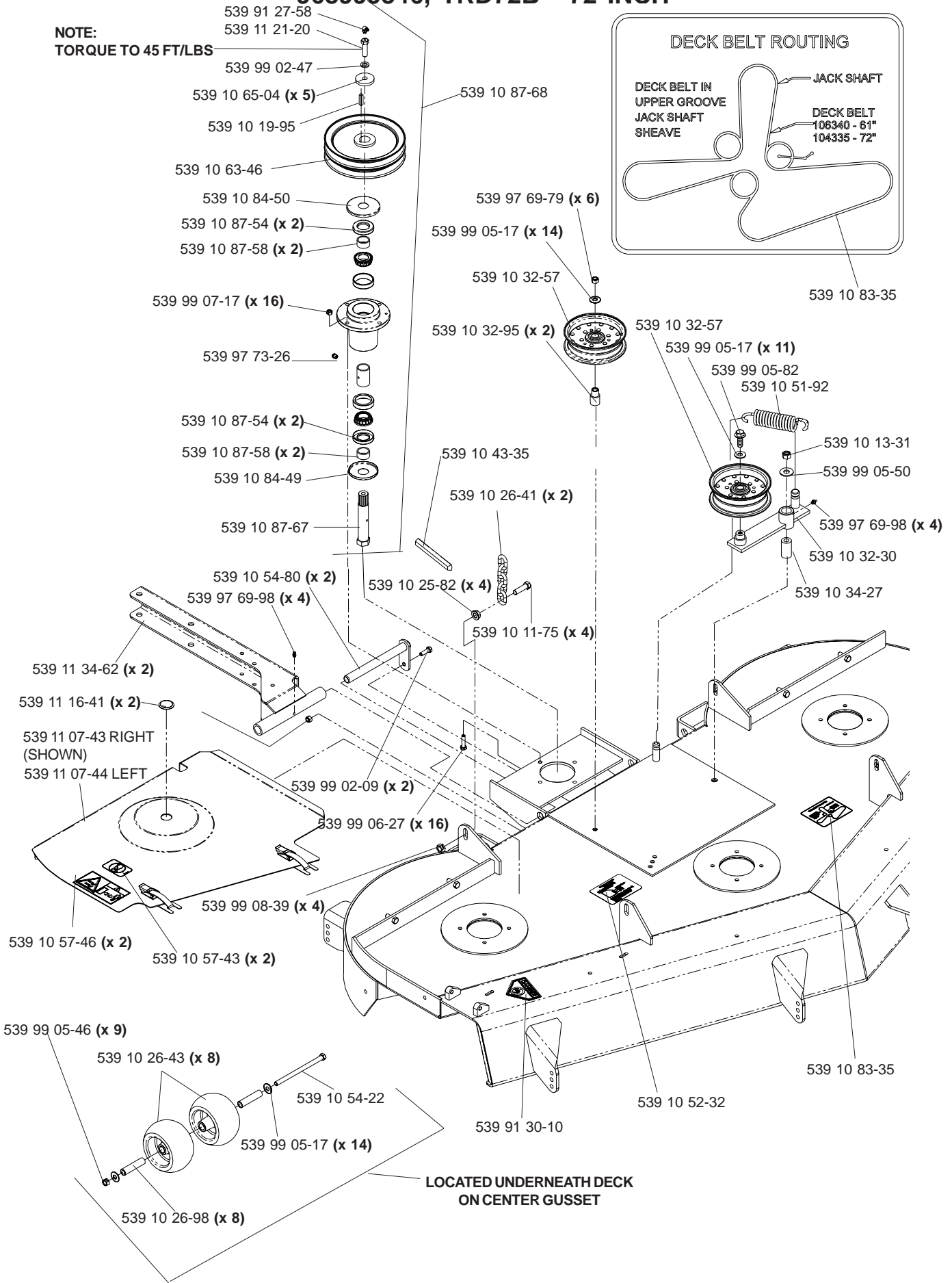
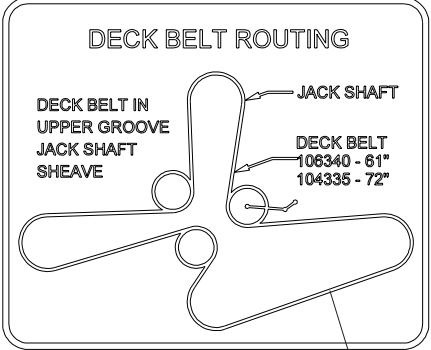
968999345, TRD61B - 61 INCH



DECK ASSEMBLY

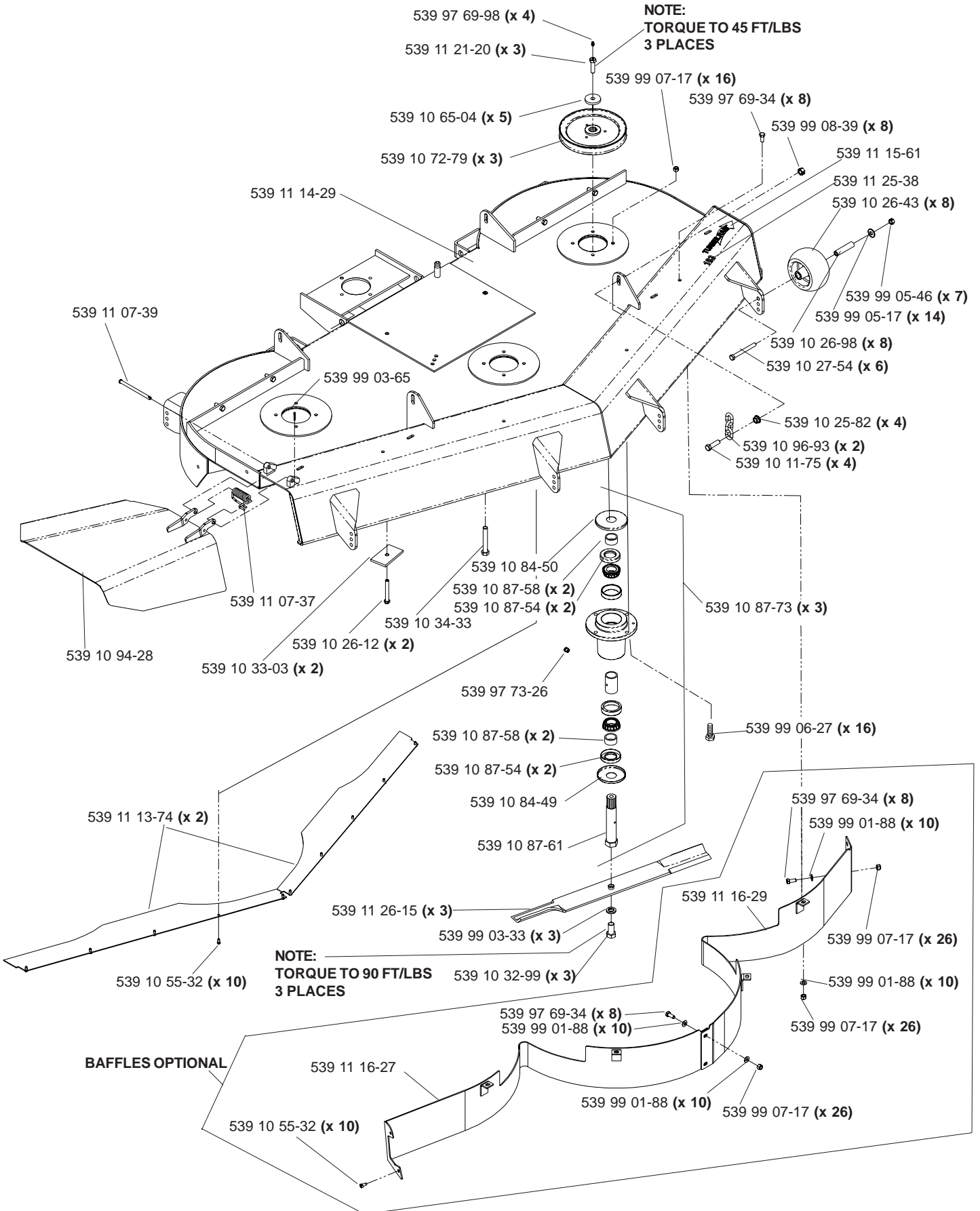
968999346, TRD72B - 72 INCH

NOTE:
TORQUE TO 45 FT/LBS



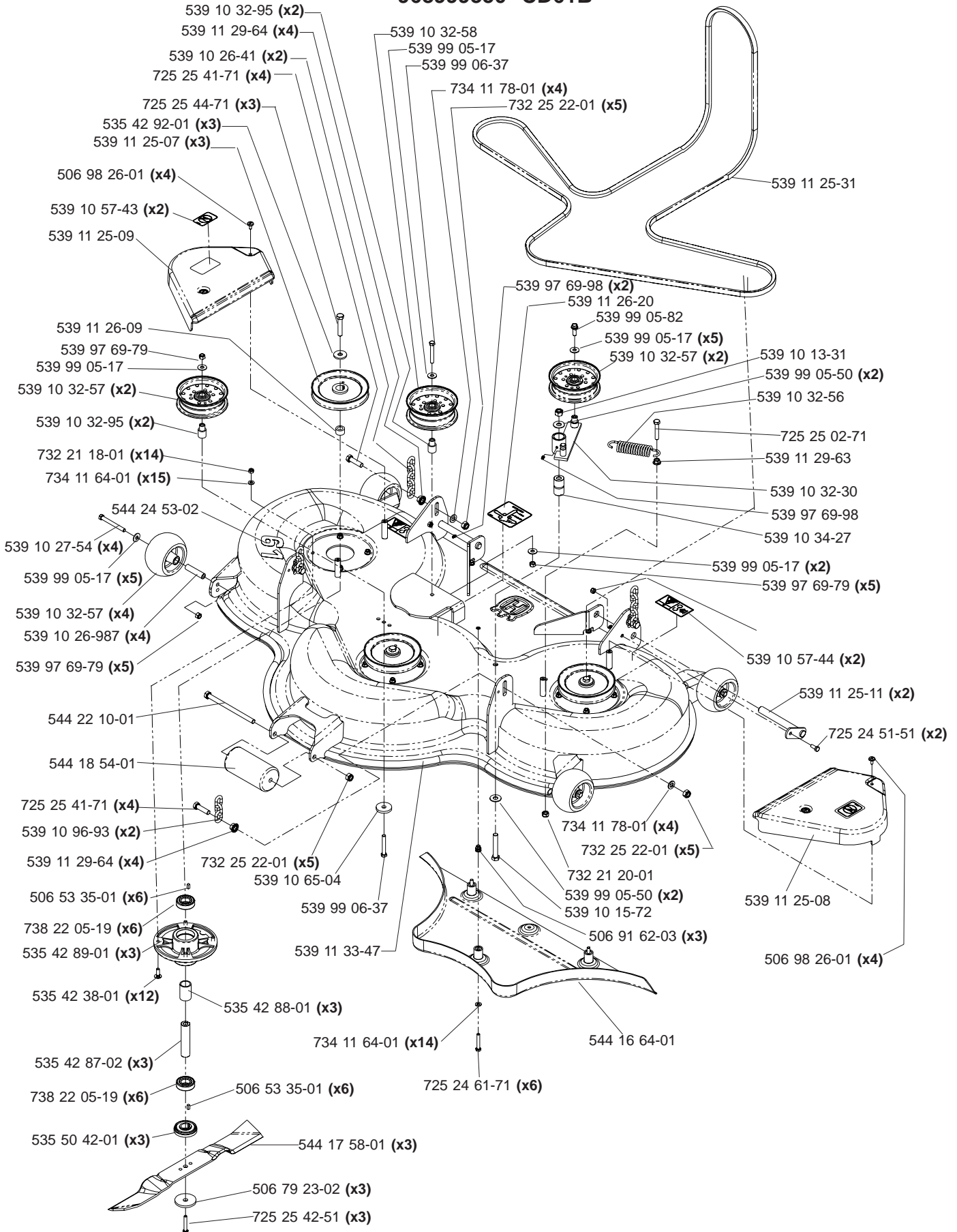
DECK ASSEMBLY

968999346, TRD72B - 72 INCH

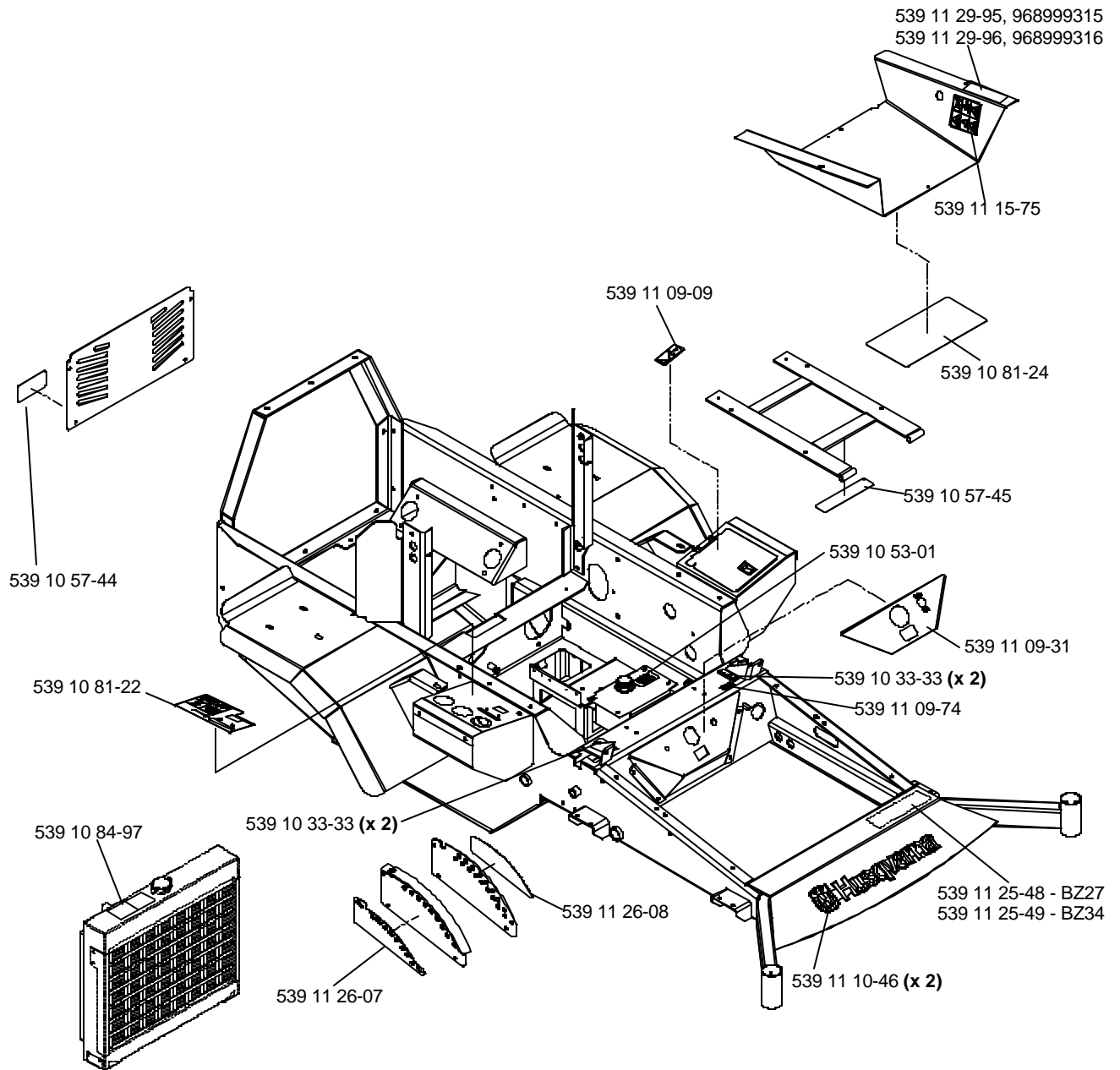


DECK ASSEMBLY

96899350 CD61B



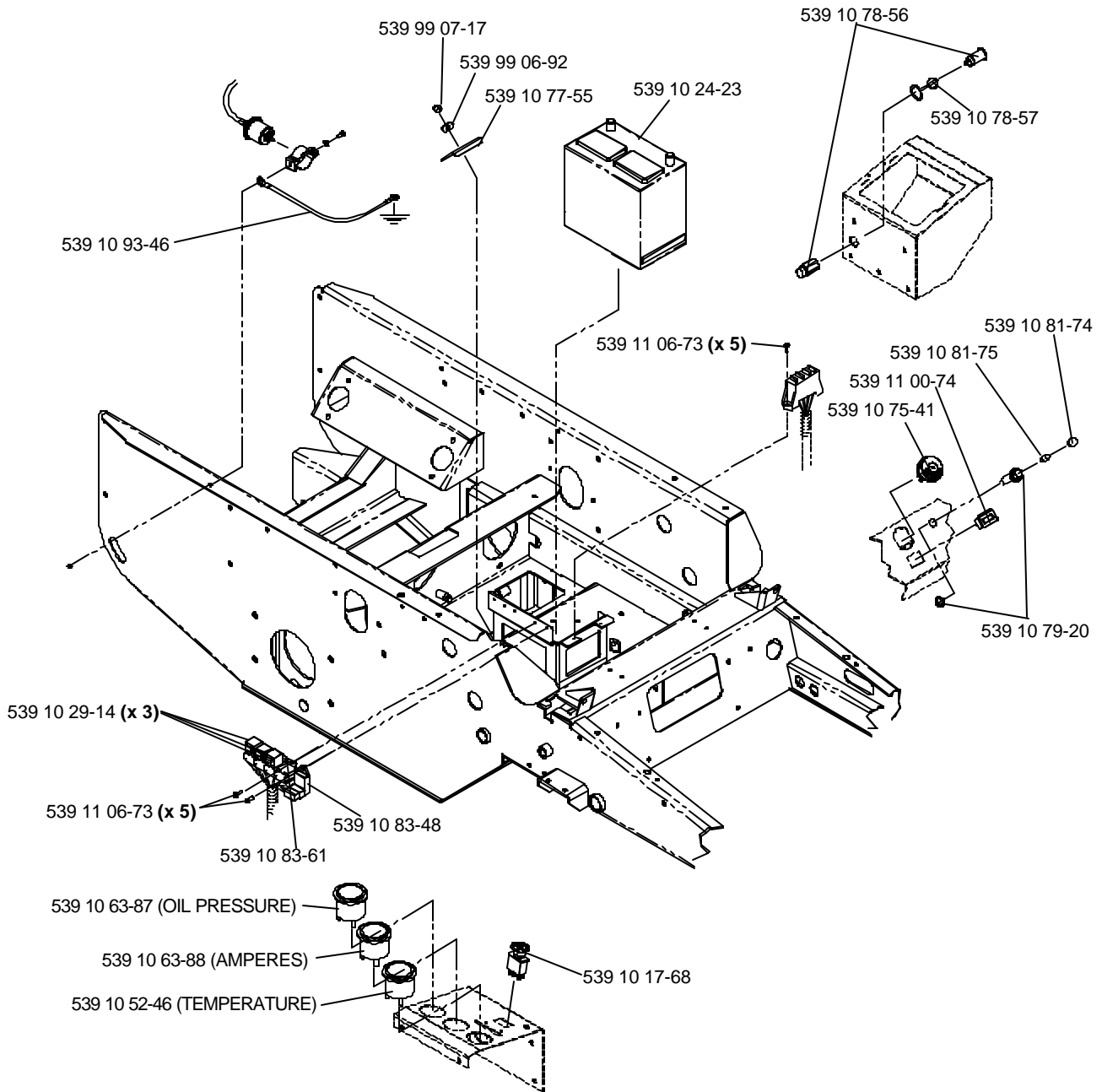
DECALS



NOT SHOWN:

- 539 10 01-28 Decal, engine exhaust
- 539 11 25-38 Decal, 183
- 539 10 58-29 Decal, CE sound power

ELECTRICAL GROUP



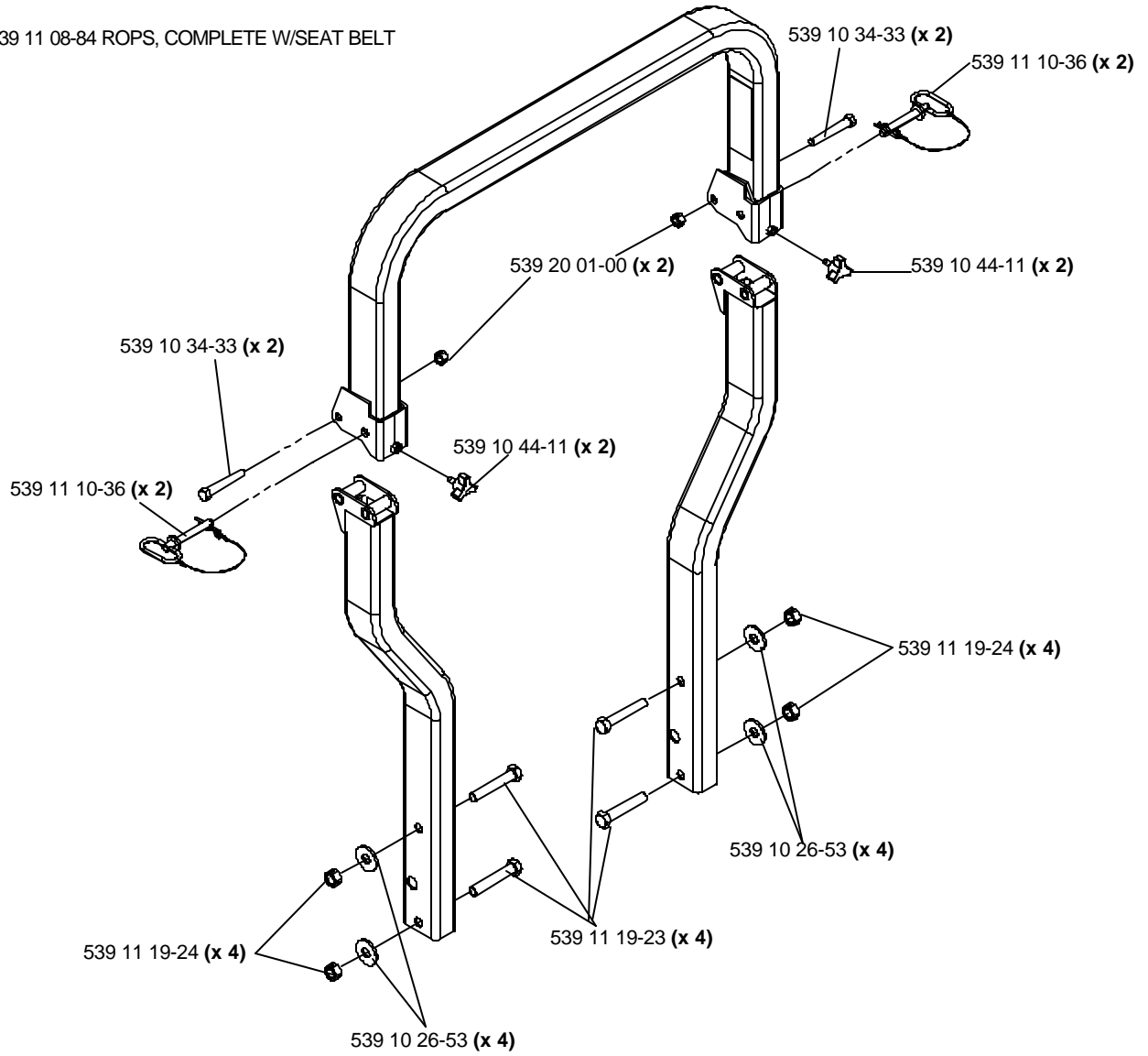
NOT SHOWN:

- 539 10 20-86 Fuse, 20 AMP, 32 volts
- 539 10 89-78 (x 2) Fuse, 10 AMP, 32 volts
- 539 10 89-79 Fuse, 30 AMP, 32 volts
- 539 10 89-80 Fuse, 50 AMP, 32 volts

ROPS

ACCESSORY

539 11 08-84 ROPS, COMPLETE W/SEAT BELT

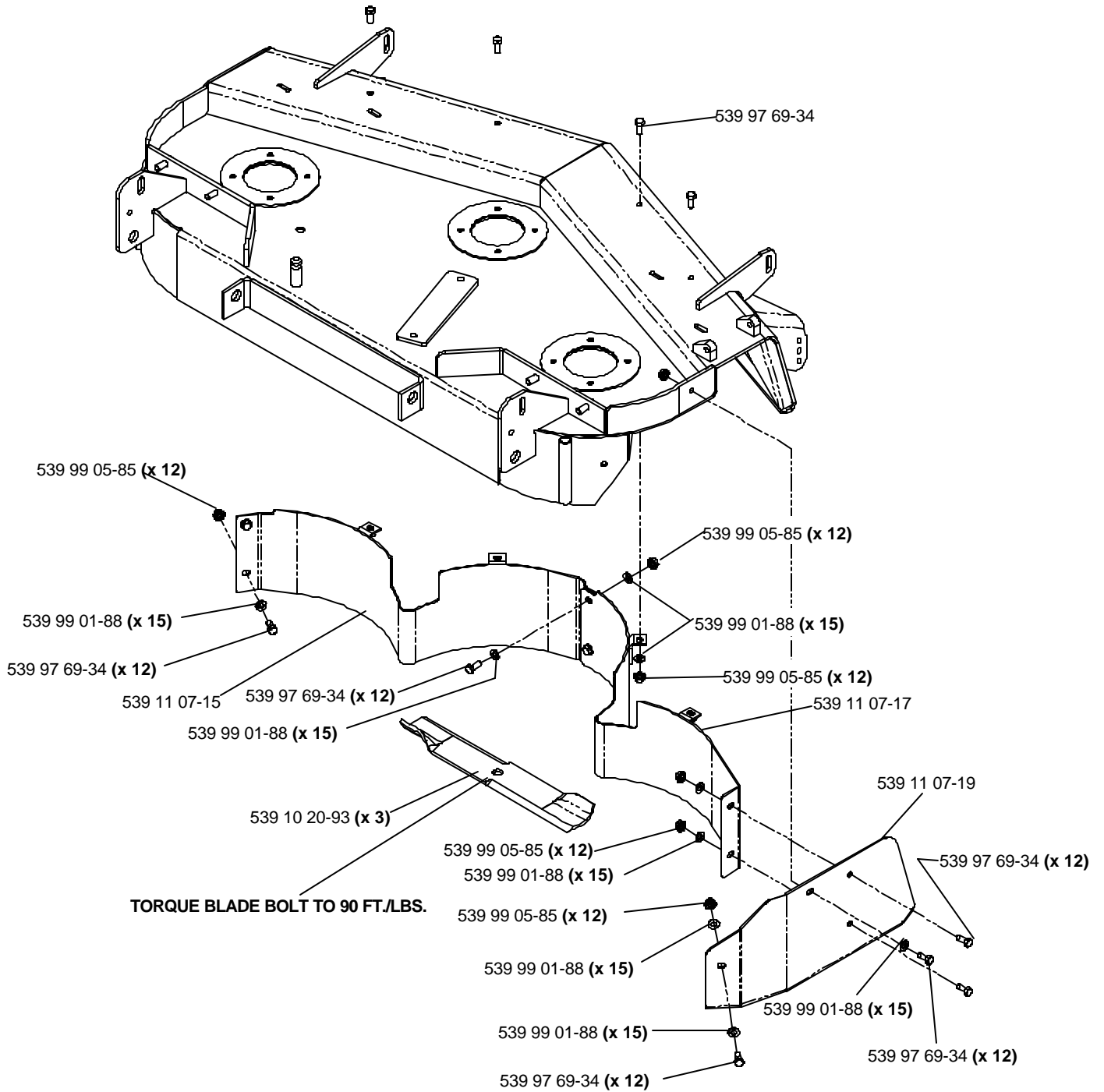


ACCESSORIES

MULCH KIT

61" PART NO. 539111353

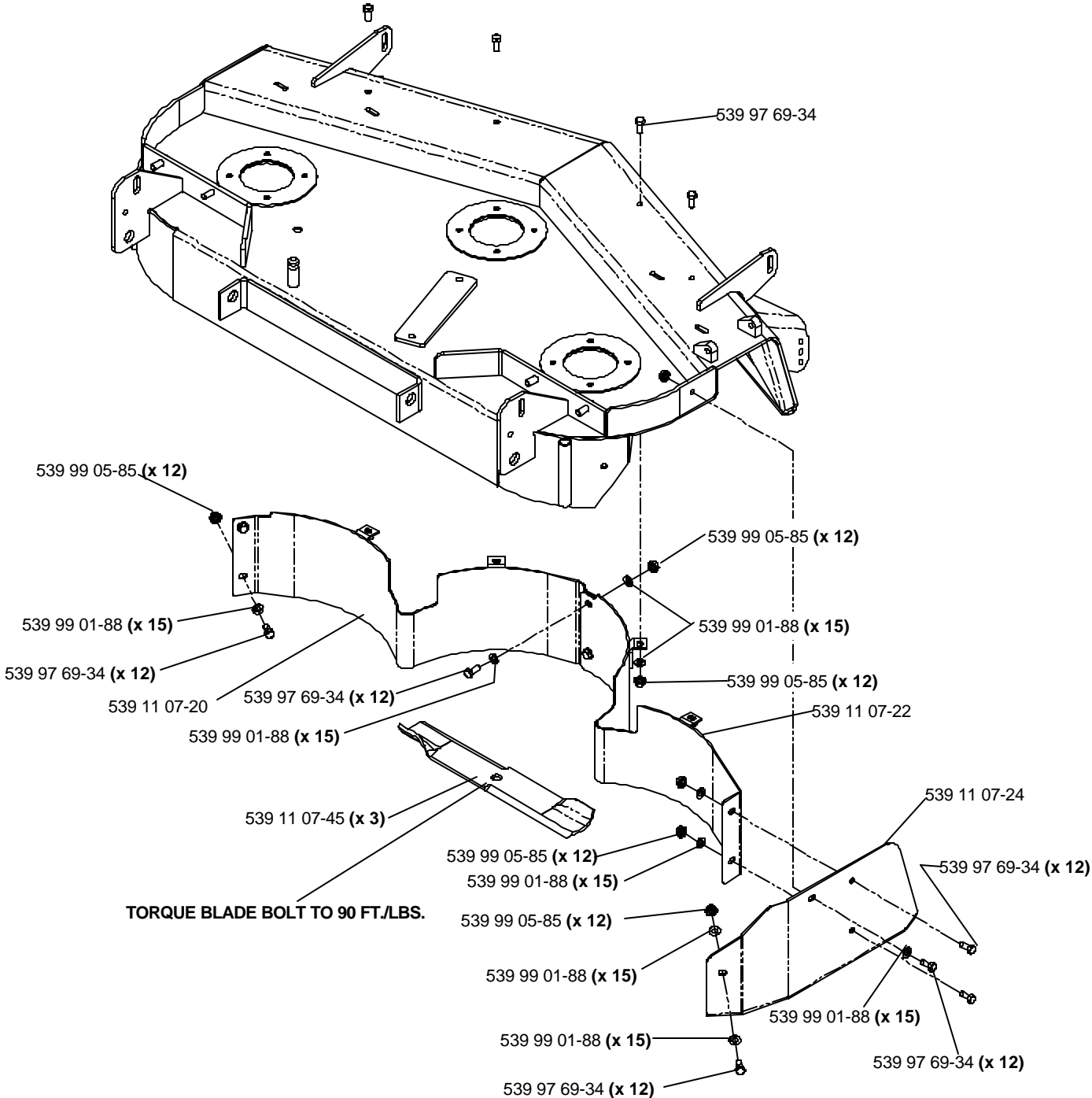
NOTE: TIGHTEN ALL HARDWARE BY TURNING THE BOLT, NOT THE NUT.



ACCESSORIES

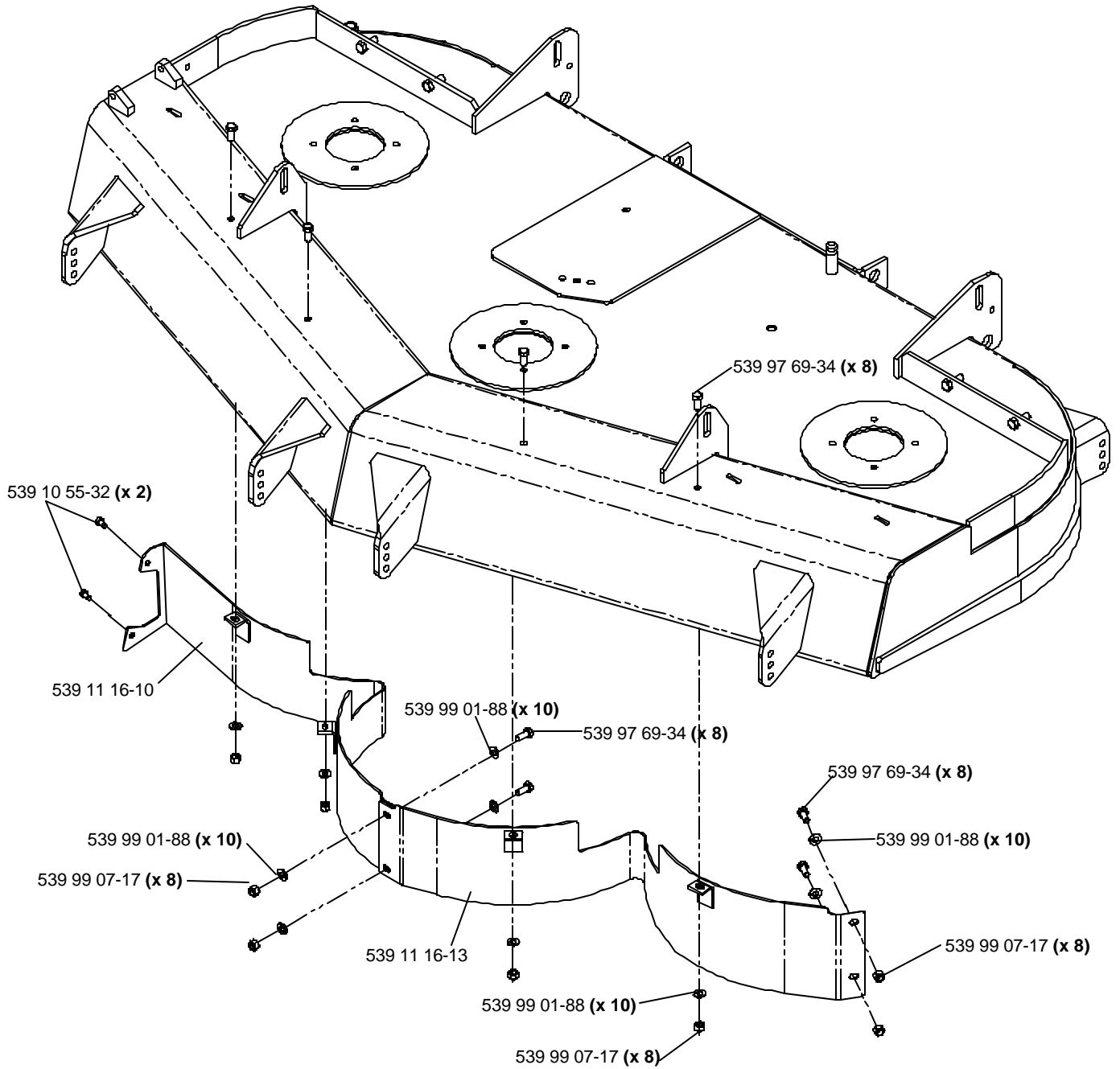
MULCH KIT 72" PART NO. 539111354

NOTE: TIGHTEN ALL HARDWARE BY TURNING THE BOLT, NOT THE NUT.



ACCESSORIES

FRONT Baffle Kits 61" PART NO. 539111634



ACCESSORIES

FRONT Baffle Kits 72" PART NO. 539111635

