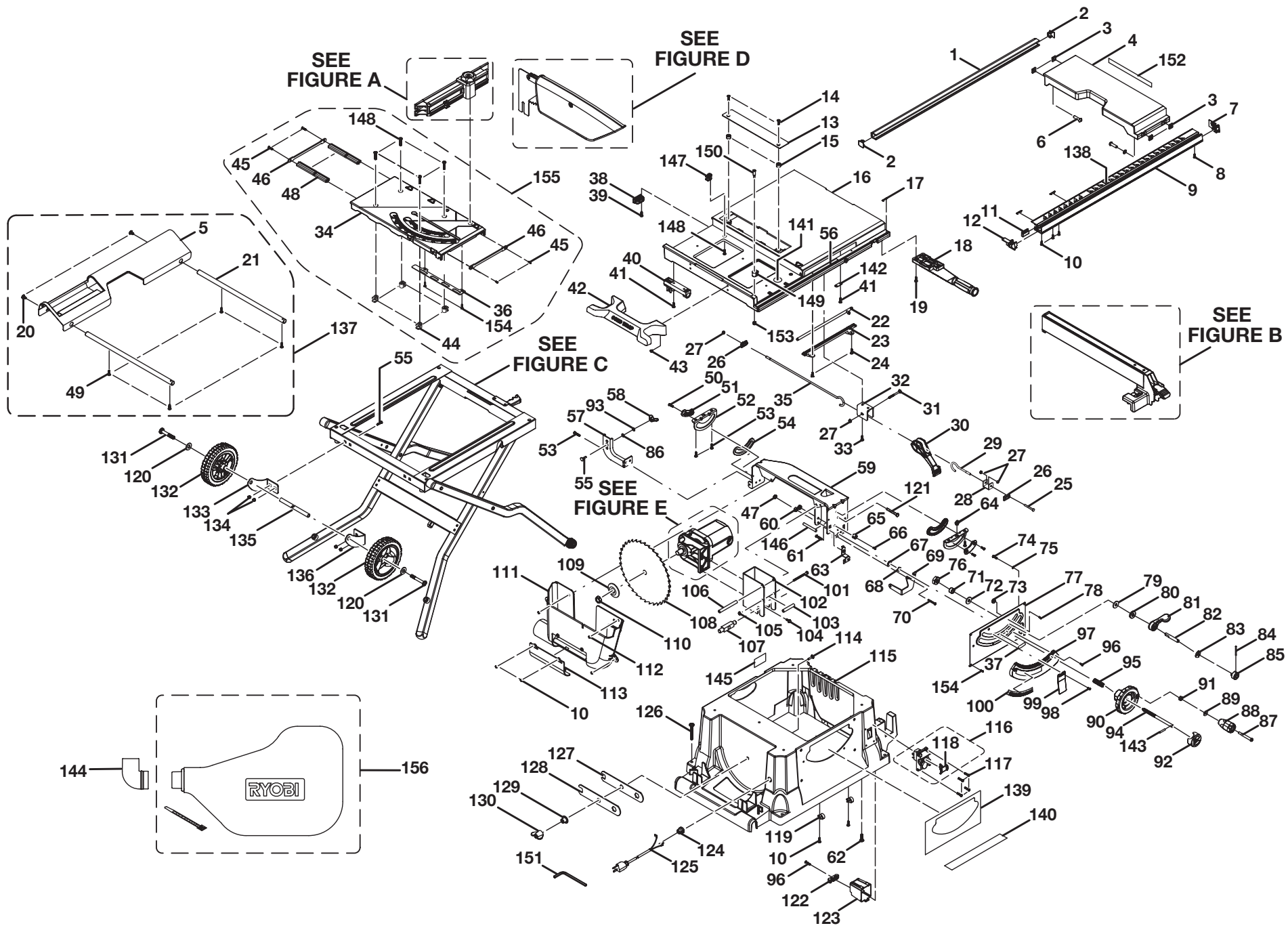


RYOBI 10 in. TABLE SAW - MODEL NUMBER BTS211



## RYOBI 10 in. TABLE SAW – MODEL NUMBER BTS211

The model number will be found on a plate attached to the motor housing. Always mention the model number in all correspondence regarding your **TABLE SAW** or when ordering repair parts.

### PARTS LIST

KEY NO.	PART NUMBER	DESCRIPTION	QTY.	KEY NO.	PART NUMBER	DESCRIPTION	QTY.
1	0134011803	REAR RAIL .....	1	31	410031002	CARRIAGE BOLT (M6 x 40 mm) .....	1
2	0134010211	END CAP (REAR RAIL).....	2	32	0134010306	BRACKET .....	1
3	0134010308	RAIL HOLDER NUT.....	4	33	410251017	SCREW w/WASHER (M6 x 12 mm) .....	2
4	089110110002	EXTENDED TABLE.....	1	34	089110110021	SLIDING MITER TABLE .....	1
5	0134010322-58	OUTFEED SUPPORT .....	1	35	0134010903	LONG LINKAGE .....	1
6	410341004	SCREW w/WASHER (M6 x 15 mm HEX SOC HD.).....	4	36	0134010309	SUPPORTING PLATE .....	1
7	0134010212	END CAP (RIGHT FRONT RAIL) .....	1	37	089110110017	BEVEL LOCK LEVER LABEL.....	1
8	410561014	SCREW (M4 x 5 mm) .....	1	38	0134010223	REAR RAIL HOLDER.....	3
9	089110110023	FRONT RAIL.....	1	39	410351003	SCREW w/WASHER (M6 x 25 mm HEX HD.) .....	6
10	410561004	SCREW (M4 x 12 mm PAN HD.).....	8	40	0121010214	EXTENSION BRACKET .....	2
11	0134010242	FRONT RAIL STOPPER .....	1	41	089110110032	SCREW (#10-24 x 1/2 in.) .....	6
12	0134010219	EXTENDED TABLE INDICATOR .....	1	42	089110110006	CORD WRAP.....	1
13	089110110003	THROAT PLATE .....	1	43	089110110024	SCREW w/WASHER .....	4
14	410101005	SCREW (M5 x 15 mm FLAT HD.).....	2	44	0134010216	HOOK.....	4
15	0121011301	THROAT PLATE PAD .....	2	45	410201005	SCREW (M4 x 12 mm FLAT HD.).....	4
16	089110110004	SAW TABLE .....	1	46	0134010314	SLIDING MITER TABLE BAR ...	2
17	0134010213	SLIDER.....	5	47	411071707	LOCK NUT (1/4-20).....	1
18	089110110031	TABLE TILT HANDLE .....	1	48	0134011804	SLIDING BAR .....	2
19	0131010814	SCREW (#10-32 x 25 mm) .....	4	49	410192001	SCREW (D4 x 10 mm TRUSS HD.).....	4
20	410551701	SCREW w/WASHER (1/4-20 x 1/2 in.).....	2	50	410109008	SCREW (M5 x 12 mm PAN HD.).....	4
21	0134010916	GUIDE ROD.....	2	51	0134010220	SLIDER.....	2
22	0134010911	MITER TABLE LATCH .....	1	52	089110110033	BRACKET .....	2
23	089110110005	GUIDE .....	1	53	410371003	SCREW w/WASHER (M6 x 12 mm) .....	6
24	410171721	SCREW (8-32 x 3/8 in.) .....	2	54	089110110034	SLIDER.....	2
25	410011013	SCREW (M6 x 40 mm HEX HD.) .....	1	55	410031014	CARRIAGE BOLT (M8 x 15 mm) .....	5
26	0134010206	LOCKING BLOCK .....	2	56	089110110018	SCALE LABEL.....	1
27	411071001	LOCK NUT .....	4	57	0134010319	RIVING KNIFE BRACKET .....	1
28	0134010332	ADJUSING PLATE.....	1	58	411171003	WING NUT (M8).....	1
29	0134010902	SHORT LINKAGE .....	1	59	0134010321	PIVOT BRACKET .....	1
30	0134010229	TABLE EXTENSION LEVER .....	1	60	411011707	HEX NUT (1/4 x 20) .....	1

## RYOBI 10 in. TABLE SAW – MODEL NUMBER BTS211

The model number will be found on a plate attached to the motor housing. Always mention the model number in all correspondence regarding your **TABLE SAW** or when ordering repair parts.

### PARTS LIST

KEY NO.	PART NUMBER	DESCRIPTION	QTY.	KEY NO.	PART NUMBER	DESCRIPTION	QTY.
61	410291006	SCREW w/WASHER (M8 x 10 mm) .....	1	87	0101140203	SCREW (SPECIAL).....	1
62	410161010	HEX SCREW (M6 x 25 mm) .....	5	88	0131020212	HAND WHEEL GRIP.....	1
63	0134010317	INDICATOR BRACKET.....	1	89	412012041	WASHER (6.5 x 13 x 1.5T).....	1
64	0121010901	ECCENTRIC SHAFT.....	1	90	089110110007	HEIGHT/BEVEL ADJUSTINGHANDWHEEL .....	1
65	0134010503	PLATE .....	1	91	411072702	LOCK NUT (1/4-20).....	1
66	410109019	SCREW (M6 x 20 mm FLAT HD.).....	1	92	089110110008	HANDWHEEL END CAP .....	1
67	412011701	WASHER (1/4 x 16 x 1t) .....	2	93	412041005	EXTERNAL STAR WASHER (D8).....	1
68	089110110035	HEX NUT (3/8 in.) .....	1	94	0134010905	HANDWHEEL ROD .....	1
69	0134010305	SUPPORT BRACKET .....	1	95	0101010907	COMPRESSION SPRING.....	1
70	410291004	SCREW w/WASHER (M6 x 10 mm) .....	2	96	0000120817	SCREW (8-16 x 19.05 mm PAN HD.).....	5
71	0134010236	LOCKING RING.....	1	97	0134010228	GEAR RACK.....	1
72	412011117	WASHER (M10 x 23 x 2t) .....	1	98	410331010	SCREW w/WASHER (M5 x 8 mm PAN HD.).....	2
73	0134010339	CAM .....	2	99	0134010233	BEVEL SCALE INDICATOR.....	1
74	410134005	SCREW (M4 x 5 mm PAN HD.).....	2	100	089110110009	BEVEL SCALE LABEL.....	1
75	412042002	LOCK WASHER (D4, EXTERNAL TOOTH) .....	2	101	410011027	SCREW (M6 x 70 mm HEX HD.) .....	1
76	411071004	LOCK NUT (M10) .....	1	102	0134010318	MOTOR BRACKET.....	1
77	0134010320	FRONT CABINET SUPPORT PLATE.....	1	103	0134010907	SPACER .....	1
78	410499007	SCREW (M5 x 8 mm TRUSS HD.) .....	2	104	410161001	SCREW (M6 x 15 mm HEX - TOOTH HD.).....	3
79	412011074	WASHER (D10 X D26 X 2T).....	1	105	411061001	HEX NUT (M6 TOOTH HD.).....	3
80	0134011301	RUBBER PAD.....	1	106	414011002	PIN (D8 x 90 mm) .....	1
81	0134010230	BEVEL LOCKING LEVER .....	1	107	0121010902	GLIDER .....	1
82	0134010912	SCREW .....	1	108	089110110001	BLADE (36T).....	1
83	0134010316	SHIM .....	1	109	089110110036	OUTER BLADE WASHER.....	1
84	410138743	SCREW (8-32 x 1 in. PAN HD.).....	1	110	0181010804	BLADE NUT (5/8-18) .....	1
85	0134010224	BEVEL LOCKING LEVER CAM .....	1	111	0134010225	INNER DUST COVER.....	1
86	412011037	WASHER (D8.5 x D16 x 1.5T).....	1	112	410331003	SCREW w/WASHER (M6 x 10 mm PAN HD.).....	4
				113	0134010226	OUTER DUST COVER.....	1
				114	410031710	CARRIAGE BOLT (5/16-18 x 1/2 in.).....	1

## RYOBI 10 in. TABLE SAW – MODEL NUMBER BTS211

The model number will be found on a plate attached to the motor housing. Always mention the model number in all correspondence regarding your **TABLE SAW** or when ordering repair parts.

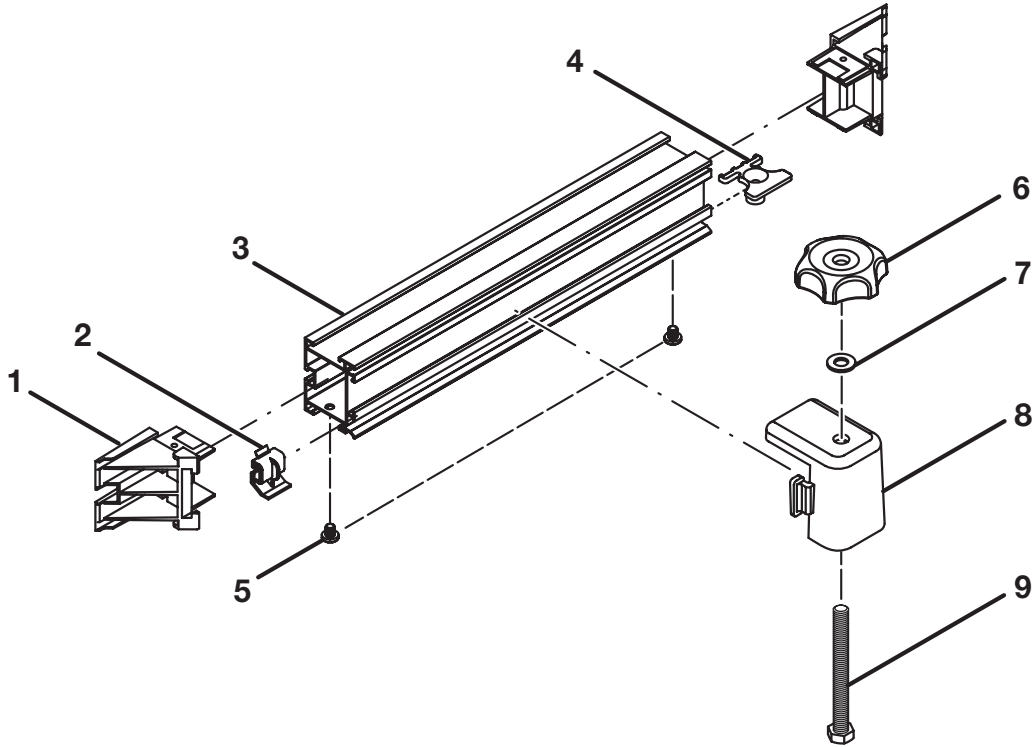
### PARTS LIST

KEY NO.	PART NUMBER	DESCRIPTION	QTY.	KEY NO.	PART NUMBER	DESCRIPTION	QTY.
115	089110110010	CABINET .....	1	134	411061003	NUT (M8) .....	4
116	984406001	SWITCH .....	1	135	0134010909	AXLE.....	1
117	410601004	SCREW (M4 x 18 mm) .....	4	136	0134010302	RIGHT BRACKET .....	1
118	984406003	SWITCH KEY.....	1	137	A134013901	OUTFEED SUPPORT ASSEMBLY .....	1
119	0121010242	WIRE CLAMP .....	3	138	089110110013	SCALE LABEL.....	1
120	412011744	WASHER (D6.5 x D20 x 1.6t) ....	2	139	089110110014	NAME PLATE .....	1
121	410011024	HEX SCREW (M6 x 110 mm) .....	2	140	089110110015	WARNING LABEL .....	1
122	0131010210	CLAMPING PAD.....	1	141	9134015330201	PINCH POINT LABEL.....	1
123	0131010209	SWITCH BOX .....	1	142	0134010304	SHIM .....	1
124	451010003	STRAIN RELIEF.....	1	143	414011003	PIN (4 x 20 mm).....	1
125	0134010701	POWER CORD .....	1	144	0181010247	DUST BAG ELBOW.....	1
126	410499006	SCREW (M8 x 40 mm BUTTON HD.).....	4	145	089110110019	LABEL .....	1
127	089110110037	SMALL BLADE WRENCH (OPEN END = 19 mm; CLOSED END = 19 mm) .....	1	146	0134010906	SPACER.....	2
128	0134010331	LARGE BLADE WRENCH (OPEN END = 21 mm; CLOSED END = 10 mm) .....	1	147	0134010216	HOOK.....	3
129	0134010238	KNOB RING (FLANGE WASHER) .....	1	148	410561013	SCREW (M5 x 16 mm PAN HD.).....	7
130	0131020211	WING NUT.....	1	149	0134010214	ADJUSTING HOOK.....	1
131	410611001	SCREW w/WASHER (M6 x 15 mm) .....	2	150	089110110041	ECCENTRIC SCREW .....	1
132	089110110012	WHEEL .....	1	151	089110110025	HEX KEY (M5 x 100 mm) .....	1
133	0134010301	LEFT BRACKET.....	1	152	089110110016	SET UP LABEL.....	1
				153	411071003	LOCK NUT (M5) .....	1
				154	410181001	SCREW (M4 x 7 mm FLAT HD.).....	6
				155	089110110704	MITER TABLE ASSEMBLY .....	1
				156	089110110702	DUST BAG ASSEMBLY .....	1
					987000586	OPERATOR'S MANUAL (089110114903)	

2-06-09  
(REV:01)

## RYOBI 10 in. TABLE SAW – MODEL NUMBER BTS211

The model number will be found on a plate attached to the motor housing. Always mention the model number in all correspondence regarding your **TABLE SAW** or when ordering repair parts.



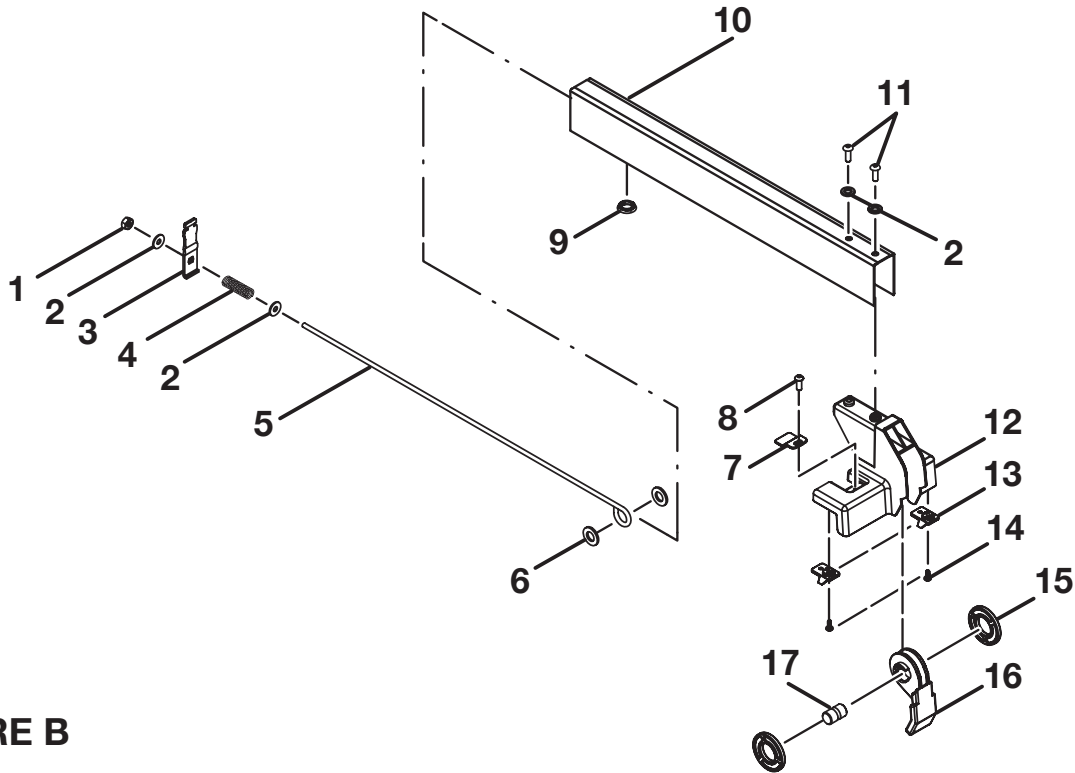
**FIGURE A**

### PARTS LIST FOR FIGURE A

KEY NO.	PART NUMBER	DESCRIPTION	QTY.
	A134010801	MITER FENCE ASSEMBLY (INC. KEY NOS. 1-9) .....	1
1	0134010227	END CAP .....	2
2	0181010208-58	MITER INDICATOR.....	1
3	0134011801	MITER FENCE .....	1
4	0134010244	LOCATOR PIN .....	1
5	410451702	SCREW (3/16 in. PAN HD.).....	2
6	0181010209	ADJUSTING KNOB .....	1
7	412011051	WASHER (D8 x D16 x 1.5t).....	1
8	0181010210	MITER FENCE HOLDER.....	1
9	410011717	SCREW (5/16-18 x 3-1/4 in. HEX HD.).....	1

## RYOBI 10 in. TABLE SAW – MODEL NUMBER BTS211

The model number will be found on a plate attached to the motor housing. Always mention the model number in all correspondence regarding your **TABLE SAW** or when ordering repair parts.



**FIGURE B**

### PARTS LIST FOR FIGURE B

KEY NO.	PART NUMBER	DESCRIPTION	QTY.
	089110110701	RIP FENCE ASSEMBLY (INC. KEY NOS. 1-17) .....	1
1	411071001	LOCK NUT (M6).....	1
2	412011030	WASHER (D6.5 x D16 x 1.5t).....	4
3	0121010310	REAR CLAMPING PLATE.....	1
4	0121010915	COMPRESSION SPRING .....	1
5	0134010904	ROD .....	1
6	412011115	WASHER (D16 x D25 x 1.5t).....	2
7	0134010232	INDICATOR.....	1
8	410331008	SCREW w/WASHER (M4 x 10 mm).....	1
9	0121010209	RIP FENCE SLIDER.....	1
10	0134011805	RIP FENCE (506.2 mm) .....	1
11	410051001	SCREW (M6 x 15 mm TRUSS) .....	2
12	089110110030	FRONT BLOCK.....	1
13	0134010218	FENCE SLIDER.....	2
14	089110110040	SCREW (8-32 x 1/2 in. FLAT HD.) .....	4
15	0121010210	ROUND PAD.....	2
16	0134010231	LOCKING LEVER .....	1
17	0134010241	AXLE.....	1

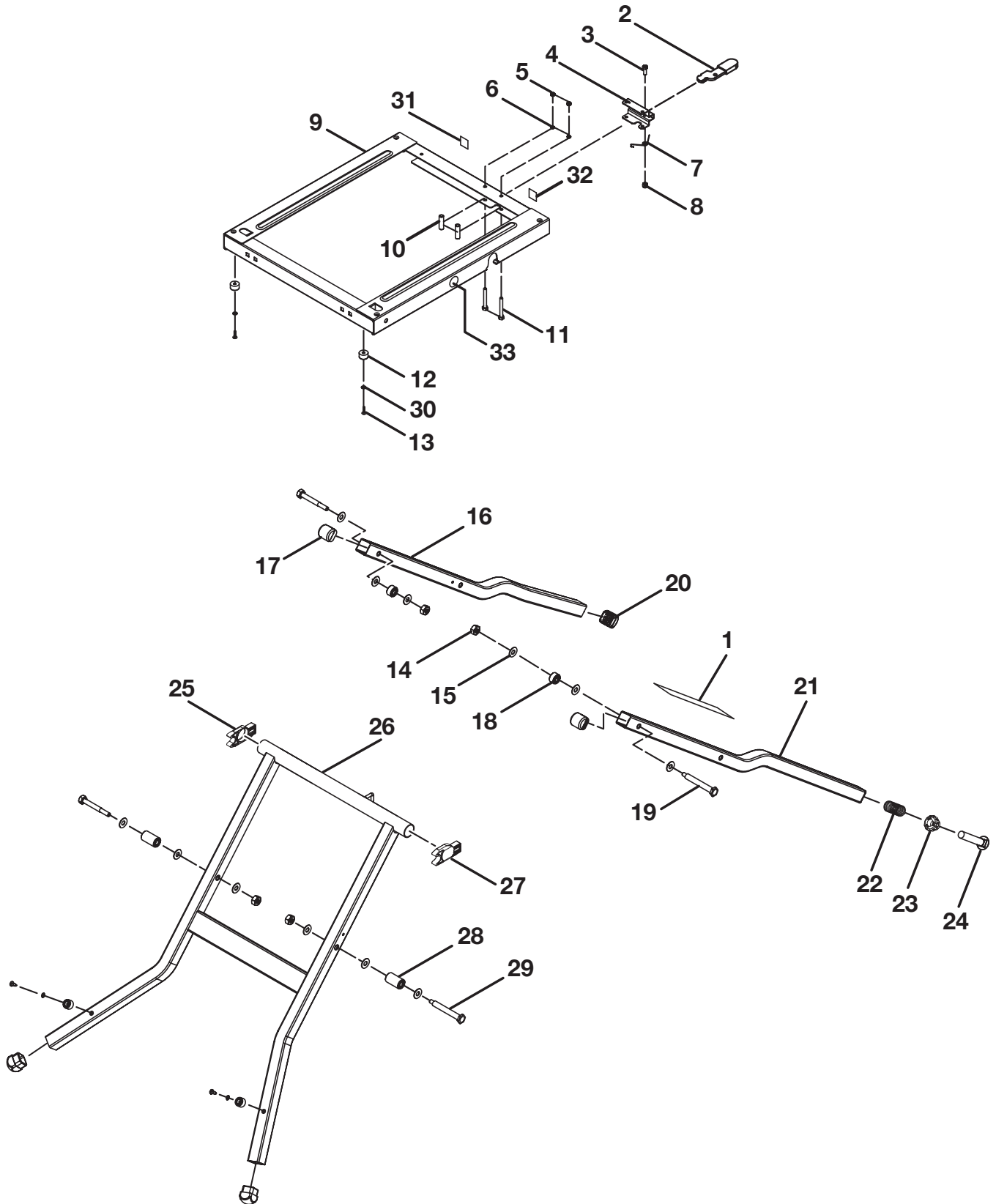


FIGURE C

## RYOBI 10 in. TABLE SAW – MODEL NUMBER BTS211

The model number will be found on a plate attached to the motor housing. Always mention the model number in all correspondence regarding your **TABLE SAW** or when ordering repair parts.

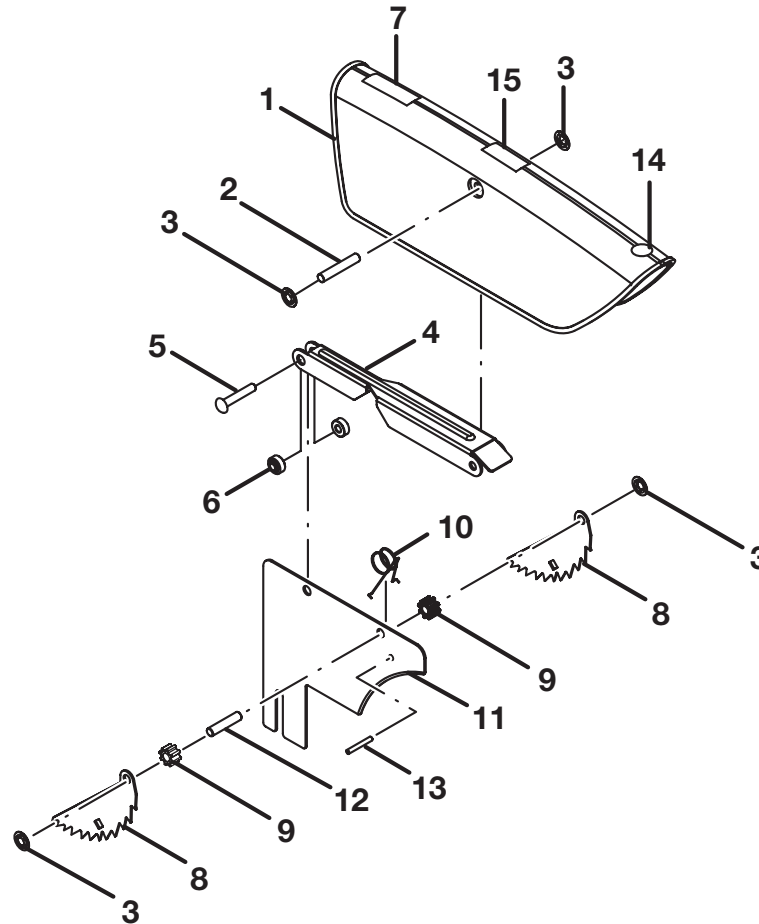
### PARTS LIST FOR FIGURE C

KEY NO.	PART NUMBER	DESCRIPTION	QTY.
	089110110703	LEG STAND ASSEMBLY (INC. KEY NOS. 1-33).....	1
1	089110110901	TEAR DOWN LABEL .....	1
2	089110114001	LATCH BAR w/GROMMET .....	1
3	0131010810	SCREW.....	1
4	0131010323-82	BRACKET .....	1
5	411011707	HEX NUT (1/4 x 20).....	2
6	412041702	WASHER (1/4 in.).....	2
7	0131010915	SPRING .....	1
8	411071702	LOCK NUT (1/4 x 20).....	1
9	A134017001	LEG BRACKET ASSEMBLY .....	1
10	0131010923	PIN.....	2
11	410011722	HEX SCREW (1/4-20 x 50.8 mm) .....	2
12	0131011302	PAD.....	4
13	410451017	SCREW (M6 x 18 mm).....	4
14	0512010812	LOCK NUT (M10).....	4
15	412011111	WASHER (D10.3 x D27 x 2T).....	12
16	089110110022	REAR LEG SUPPORT .....	1
17	0134010235	LEG UPPER END CAP .....	2
18	0134010240	SPACER TUBE .....	2
19	410011028	SCREW (M10 x 105 mm HEX HD.).....	2
20	0134010243	LEG END CAP .....	3
21	089110110705	FRONT LEG SUPPORT .....	1
22	0131010918	SPRING .....	1
23	0131010232	FOOT LEVEL ADJUSTMENT.....	1
24	410031714	BOLT (5/8-11 x 88.9 mm).....	1
25	0131010230	LEG REAR SLIDER.....	1
26	089110110706	TUBE .....	1
27	0131010231	LEG FRONT SLIDER .....	1
28	0134010239	LEG SPACER TUBE .....	2
29	410011029	SCREW (M10 x 115 mm HEX HD.).....	2
30	412011025	WASHER (6.5 x 10 x .8T).....	4
31	9134015335703	LEG LOCK LABEL .....	1
32	9134015335704	LEG UNLOCK LABEL.....	1
33	9134015330202	PINCH POINT LABEL.....	2



## RYOBI 10 in. TABLE SAW – MODEL NUMBER BTS211

The model number will be found on a plate attached to the motor housing. Always mention the model number in all correspondence regarding your **TABLE SAW** or when ordering repair parts.



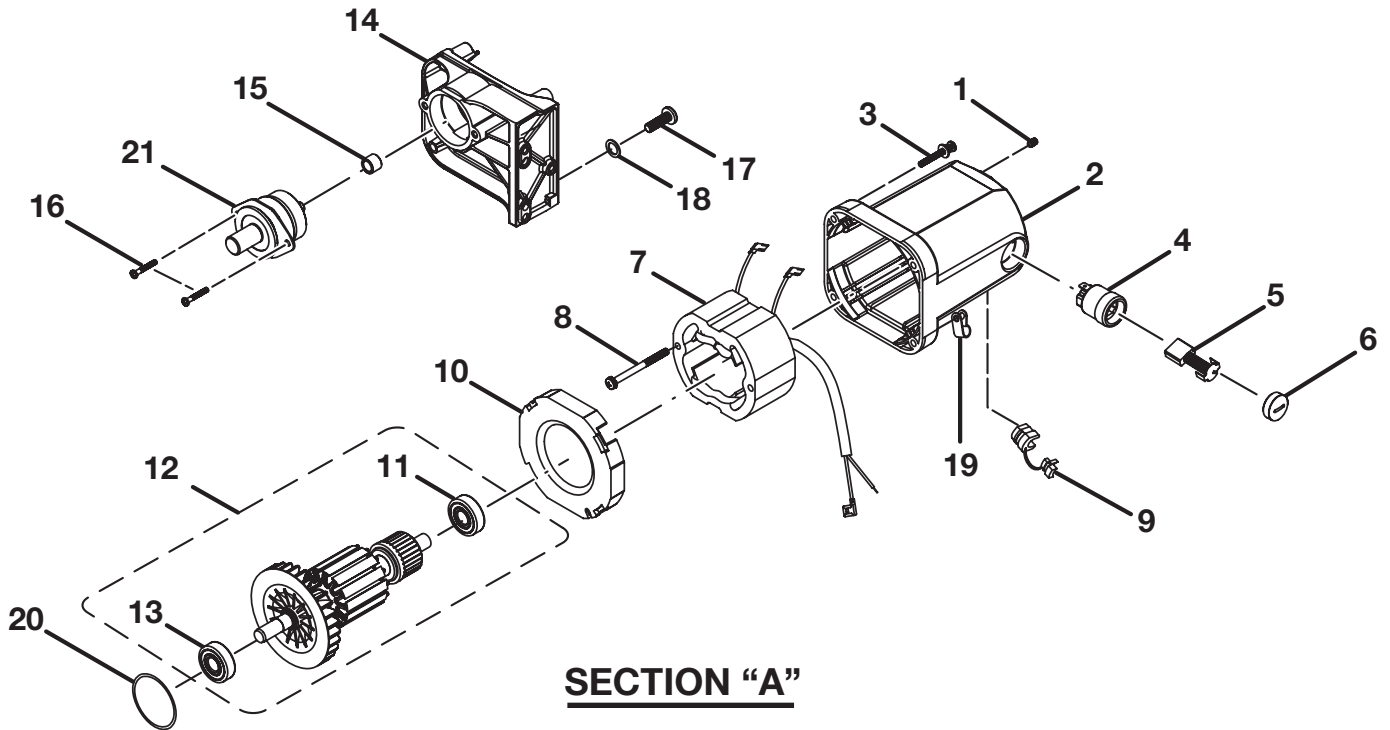
**FIGURE D**

### PARTS LIST FOR FIGURE D

KEY NO.	PART NUMBER	DESCRIPTION	QTY.
	089110110700	BLADE GUARD ASSEMBLY (INC. KEY NOS 1-15) .....	1
1	089110110020	BLADE GUARD.....	1
2	414050004	DOWEL PIN (5/16 in. x 45.5 mm) .....	1
3	411101702	LOCKING NUT (5/16 in.).....	4
4	0134010310	ARM.....	1
5	0134010913	RIVET .....	1
6	0134010207	ARM SHIM.....	2
7	9181015330203	LABEL.....	1
8	0181010303	ANTI-KICKBACK PAWLS.....	2
9	0134010208	SHIM (ANTI-KICKBACK PAWLS) .....	2
10	0121010914	TORSION SPRING .....	1
11	0134010311	SPREADER.....	1
12	414051701	PIN (5/16 x 34.5 mm).....	1
13	414011035	PIN (D5 x 32).....	1
14	9181015330202	WARNING LABEL.....	1
15	089110110900	BLADE ROTATION LABEL .....	1

## RYOBI 10 in. TABLE SAW – MODEL NUMBER BTS211

The model number will be found on a plate attached to the motor housing. Always mention the model number in all correspondence regarding your **TABLE SAW** or when ordering repair parts.



### PARTS LIST FOR SECTION "A"

KEY PART NO.	PART NUMBER	DESCRIPTION	QTY.	KEY PART NO.	PART NUMBER	DESCRIPTION	QTY.
	A134010104	MOTOR ASSEMBLY (INC. KEY NOS. 1-21).....	1	11	089110110026	BALL BEARING (6200ZZ C3, HVQ) .....	1
1	410071005	SOCKET SCREW (M5 x 8) .....	2	12	089110110707	ARMATURE ASSEMBLY (INC. KEY NOS. 11 AND 13)....	1
2	0134010201	MOTOR HOUSING.....	1	13	089110110027	BALL BEARING (6201ZW).....	1
3	410271701	SCREW w/WASHER (3/16-32 x 1-3/8 in. PAN HD.) .	4	14	089110110708	GEAR BOX .....	1
4	0121010231	BRUSH TUBE.....	2	15	420110004	NEEDLE BEARING .....	1
5	0502025007	BRUSH (7 x 17 x 19/17) .....	2	16	089110110039	SCREW w/WASHER (M5 x 12 mm PAN HD.) .....	2
6	0121010238	BRUSH CAP .....	2	17	410174721	SCREW (8-32 x 3/8 in. TRUSS HD.).....	1
7	A134010401	FIELD ASSEMBLY.....	1	18	412042002	LOCK WASHER.....	1
8	410581001	SCREW w/WASHER (M5 x 60 mm PAN HD.) .....	2	19	0121010242	WIRE CLAMP .....	1
9	451010003	STRAIN RELIEF .....	1	20	441010012	"O" RING (D29.6 x 1.2T).....	1
10	0134010202	BAFFLE .....	1	21	A134010503	ARBOR ASSEMBLY .....	1

**SECTION "A" REPRESENTS AN IMPORTANT PART OF THE DOUBLE INSULATED SYSTEM OF THIS TOOL. ANY REPAIR TO THIS TOOL REQUIRES DIELECTRIC TESTING TO INSURE CUSTOMER SAFETY AND TO COMPLY WITH COMPANY REQUIREMENTS.**