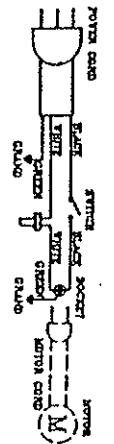
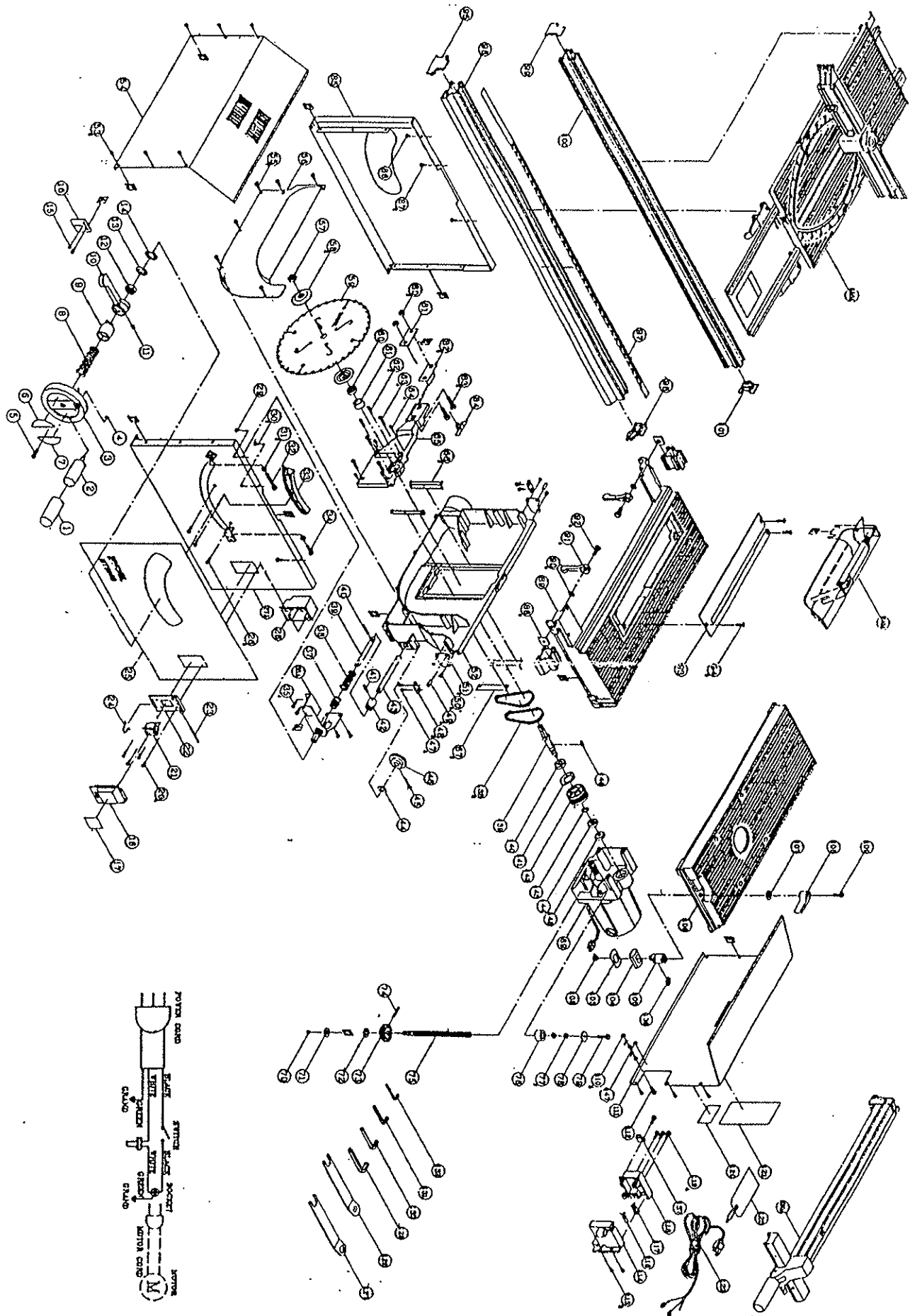


TABLE SAW BT3000SXI



**PARTS LIST FOR AFTER SALES SERVICE
MODEL BT3000SX1**

REF	PART NO.	DESCRIPTION	QTY	REF	PART NO.	DESCRIPTION	QTY
1	969912003	BLADE ADJ'T HANDLE GRIP	1	54	969105001	PLATE COVER	1
2	662822002	HANDWHEEL INNER GRIP	1	55	968705040	SCREW (10-24X1/2" TAPPING)	7
3	662848001	HANDWHEEL 10-15	1	56	969548003	FRONT COVER	1
4	622167014	C-RING	1	57	969548003	SET NUT (5/8")	1
5	969220002	CAP SCREW	1	59	969196001	BLADE	1
6	662884001	FRONT CABINET PANEL	1	60	662062001	COLLAR	1
7	969103001	REAR CABINET PANEL	1	61	662062002	COLLAR	1
8	969222001	COMPRESSION SPRING	1	62	614658007	SCREW(8-32X3/4" PAN HD)	2
9	969129002	ECCENTRIC CAM	1	63	968705015	SCREW(10-24X1" TAPPING)	4
10	969130001	TENSION HANDLE	1	64	662079001	SCREW(10-24X3/8" SET)	4
11	969218001	SCREW(10-24X5/8" PAN HEAD)	1	65	969212001	SPLITTER BRACKET	1
12	607406006	HEX NUT (3/4-16)	1	66	969599001	SHIM	2
13	969142001	DISC SPRING WASHER	1	67	969600001	SHIM	2
14	661796001	WASHER	1	69	969214010	MOTOR ASSY	1
15	968703005	SCREW 8-32X3/8" PAN HD	1	70	607406005	HEX NUT (3/8X16)	1
16	969140001	TILT POINTER	1	71	706382360	FLAT WASHER	1
17	664105001	SWITCH COVER LABEL	1	72	706382360	FLAT WASHER	1
18	663283001	SWITCH COVER	1	73	969122002	BEVEL GEAR	1
20	968702005	SCREW(8-16X3/8" PAN HD)	4	74	941401831	SPRING PIN	1
21	663283001	ROCKER SWITCH	1	75	969123001	ELEVATING SHAFT-THREADED	1
22	663285001	SWITCH BASE	1	76	661853001	SPACER	1
23	623924009	PARALLEL PIN	1	77	622171053	HEX NUT(1/4-20)	2
24	664084001	LATCH	1	78	706382343	FLAT WASHER	1
25	664101001	NAME PLATE LABEL	1	79	615570012	BOLT(1/4-20X1" HEX HD)	1
26	662493002	SCREW(10-24X5/8" PAN HEAD)	3	80	607406003	HEX NUT(5/16-18)	2
27	662884001	FRONT CABINET PANEL	1	81	662481001	CLAMP	1
28	663284001	REAR SWITCH COVER	1	82	969193001	SPACER	5
29	968705004	SCREW(10-24X5/16" PAN HEAD)	1	83	615570007	BOLT(5/16-5/8X.025)	2
30	968705040	SCREW(10-24X1/2" PAN HD)	2	84	662080001	BOLT HOLDER	1
31	969226001	HEX NUT (1/4X20)	2	85	969103001	PLATE COVER	1
32	615570010	BOLT (1/4-20X2")	1	86	968705004	SCREW(10-24X5/16" TAPPING)	1
33	969120001	SEGMENT GEAR	1	87	968705040	SCREW(10-24X1/2" TAPPING)	2
34	615570012	BOLT (1/4-20X1")	1	88	964251002	SQUARE NUT	4
35	968705009	SCREW 10-24X3/8" TAPPING	4	89	969101001	SAW TABLE	1
36	661694003	CLAMPER BRACKET	1	90	706382346	FLAT WASHER	4
37	969127001	TILTING GEAR	1	91	663144001	CLAMP HANDLE	4
38	969221001	COMPRESSION SPRING	1	92	615570020	BOLT(5/16-18X3/4")	4
39	969125002	ROD	1	93	969605004	TABLE INSERT	1
40	941401831	SPRING PIN	1	94	662079001	SCREW(10-24X3/4")	3
41	941401018	SPRING PIN	1	95	662406001	SLIDE COVER	1
42	969128001	CLUTCH	1	96	969117001	FRONT RAIL	1
43	969124001	GEAR SHAFT	1	97	969135001	SCALE	1
44	706382360	FLAT WASHER	1	98	662407001	SLIDE COVER	1
45	607067007	CROS-RECESSED FILLISTER(8-32X13/	1	99	662409001	SLIDE COVER	1
46	969122002	BEVEL GEAR	1	100	969924001	REAR RAIL	1
47	968705040	SCREW (10-24X12")	4	101	662408001	SLIDE COVER	1
48	969113001	CLAMP	2	102	644585002	HEX NUT (1/4-20)	1
49	969170001	ROLL PIN	2	103	661992002	RETAINING CLIP	1
50	968705009	SCREW (10-24X5/8" TAPPING")	4	104	969216001	SPRING PLATE	1
51	664087001	LOCKER SUPPORT	2	105	969174004	HANDLE SHAFT	1
52	959529002	BODY	1	106	969173001	EXTENSION TABLE	1
53	968705040	SCREW (8-32X3/8" TAPPING)	6	107	706382360	FLAT WASHER	1
58	662063001	ARBOR COLLAR	2	108	969175002	BOLT CLAMP	1

PARTS LIST FOR AFTER SALES SERVICE

MODEL BT3000SX1

REF	PART NO.	DESCRIPTION	QTY	REF	PART NO.	DESCRIPTION	QTY
109	969220002	BOLT (1/4-20X3/4" HEX HD)	1				
110	643128001	HEX NUT AND FLAT WASHER	3				
111	969104001	PLATE COVER	1				
112	614658007	SCREW(8-32X3/4" PAN HD)	1				
113	968703005	SCREW(8-32X3/8" PAN HD)	5				
114	969230001	PLUG SOCKET BOX	1				
116	989001001	CABLE CLAMP	1				
117	969137001	OUTLET 15AMP	1				
118	969229001	PLUG SOCKET BOX	1				
119	968702001	SCREW (8-16X3/4" TAPPING)	4				
120	663346001	SPEC. LABEL	1				
121	663344002	WARNING LABEL	1				
122	989001001	POWER CABLE	1				
123	663339001	HAND TAG	1				
127	969244003	WRENCH	1				
128	969244004	WRENCH	1				
129	820193007	WRENCH HEX	1				
130	820193006	WRENCH HEX	1				
131	820193005	WRENCH HEX	1				
132	820193004	WRENCH HEX	1				
135	663180001	SHAFT-HANDWHEEL	1				
136	623111001	E-RING	1				
137	989001001	CABLE CLAMP	1				
138	662329001	V-BELT	2				
139	969209001	CUTTER SHAFT	1				
140	969235003	BEARING(6003)	1				
141	969203001	BEARING COVER	1				
142	969210002	ARBOR PULLEY	1				
143	622167068	C-RING	1				
144	969235004	BEARING(6002)	1				
145	969235005	BEARING (6200)	1				
146	616452010	WOODRUF KEY	1				
147	623924009	STICKER	1				
150A	969176901	MITER TABLE ASSY	1				
200A	969143001	RIP FENCE ASSY	1				
240A	969165001	BLADE GUARD ASSY	1				

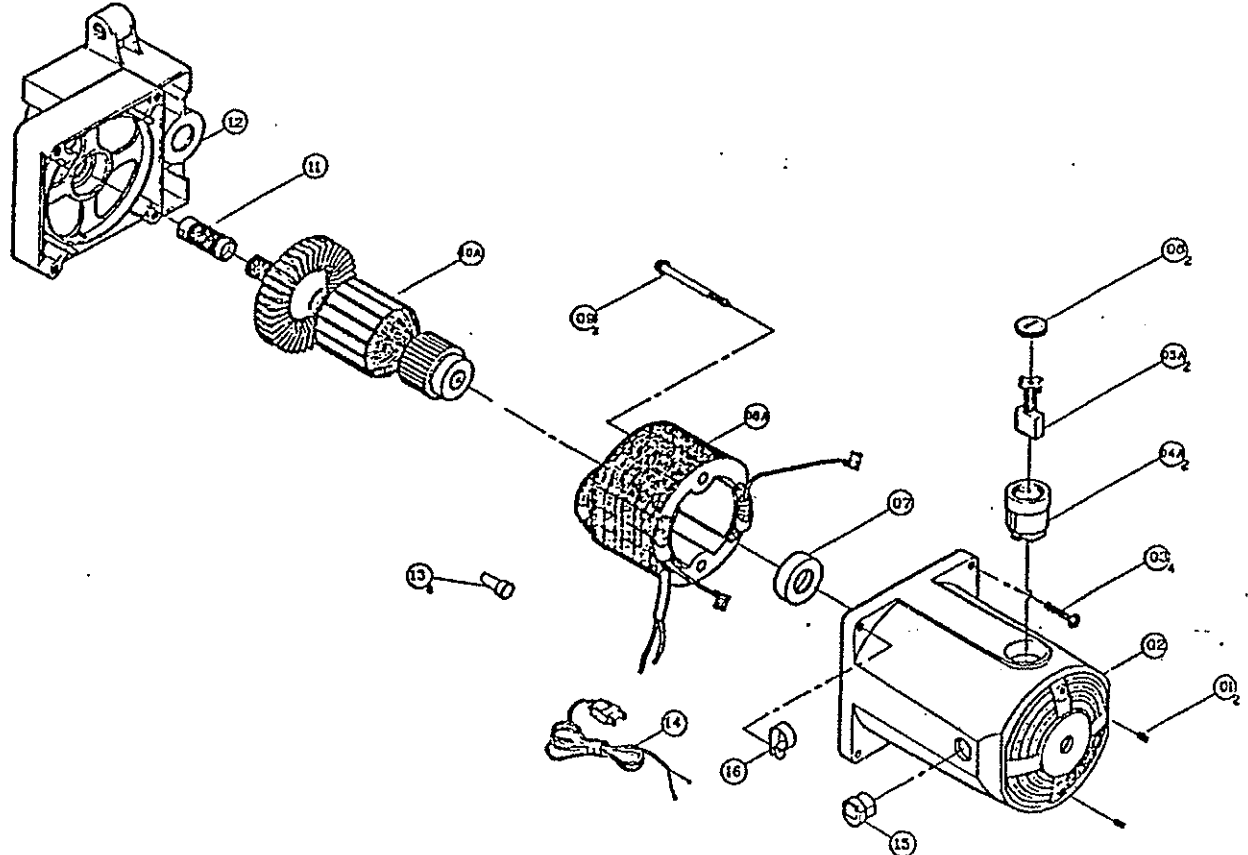
NEW MODEL

**PARTS LIST FOR AFTER SALES SERVICE
MODEL BT3000SXI MOTOR ASSEMBLY**

1	4130266	HEX SET SCREW	2		
2	4800030	MOTOR HOUSING	1		
3	4130267	PAN HEAD SCREW AND WASHER	4		
4	4570008	BRUSH HOLDER ASSY	1		
5	4540007	BRUSH ASSY	1		
6	4570009	BRUSH COVER	1		
7	4750011	BEARING BUSHING	1		
8	4500008	FIELD ASSY	1		
9	4130268	FIELD PAN HD SCREW AND WASHER	2		
10	4460008	ARMATURE ASSY	1		
11	4860022	MOTOR PULLEY	1		
12	4800031	MOTOR BRACKET	1		
13	4560026	CLOSED END CONNECTOR	1		
14	4520016	POWER CORD	1		
15	4520017	STRAIN RELIEF BUSHING	1		
16	4520018	CABLE CLAMP	1		

0J0 →

SERVICE NOTES:
REFERENCE NUMBERS 1-8 ON FIG. 62 REMAIN THE SAME



Everyone please note the manufacture start date on the BT3000SXI was 9701. The data plate will not indicate BT3000SXI, it did not change. Replacement motor assembly parts are available for the BT3000SXI, (date code 9701 and above)