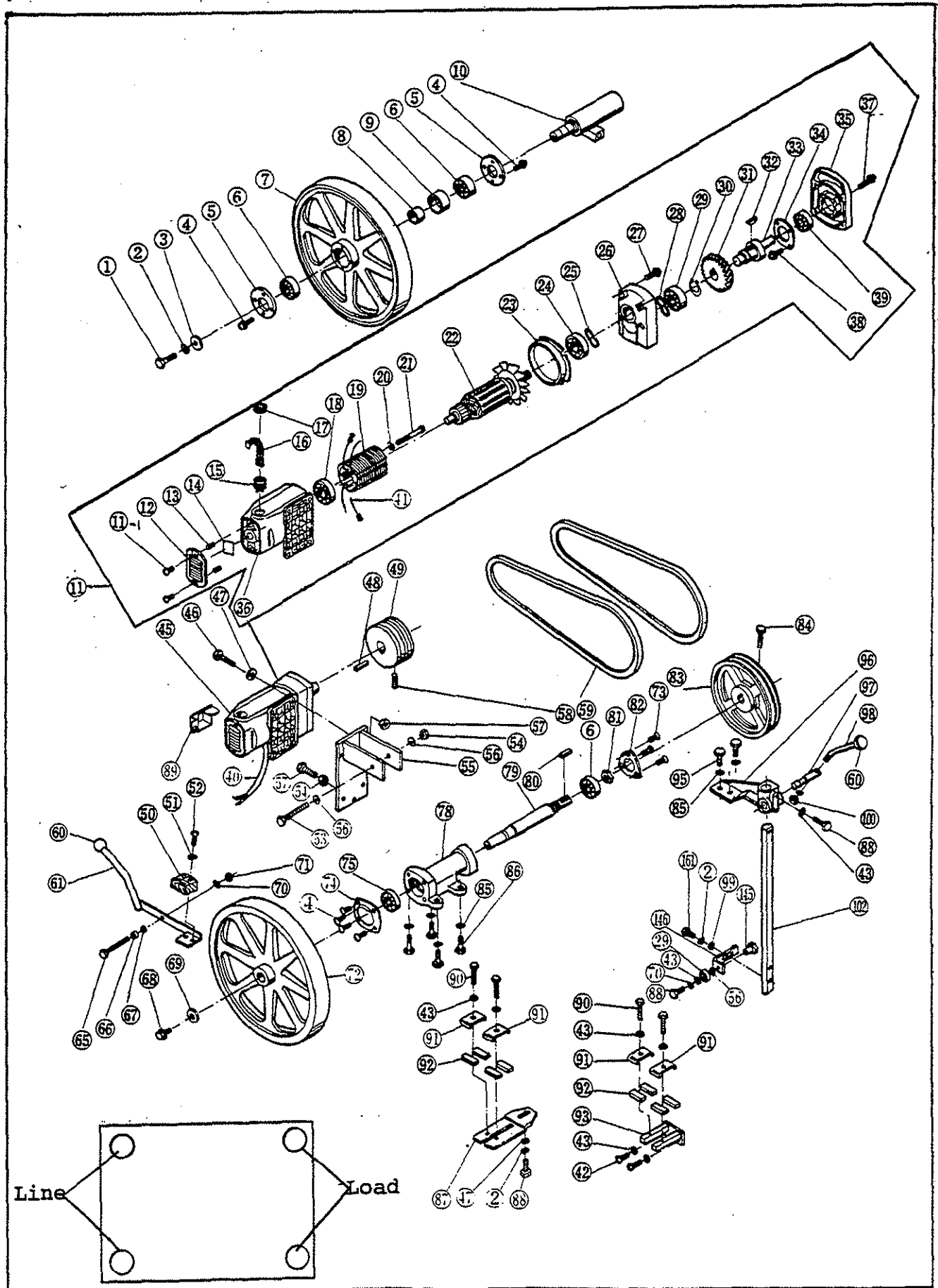


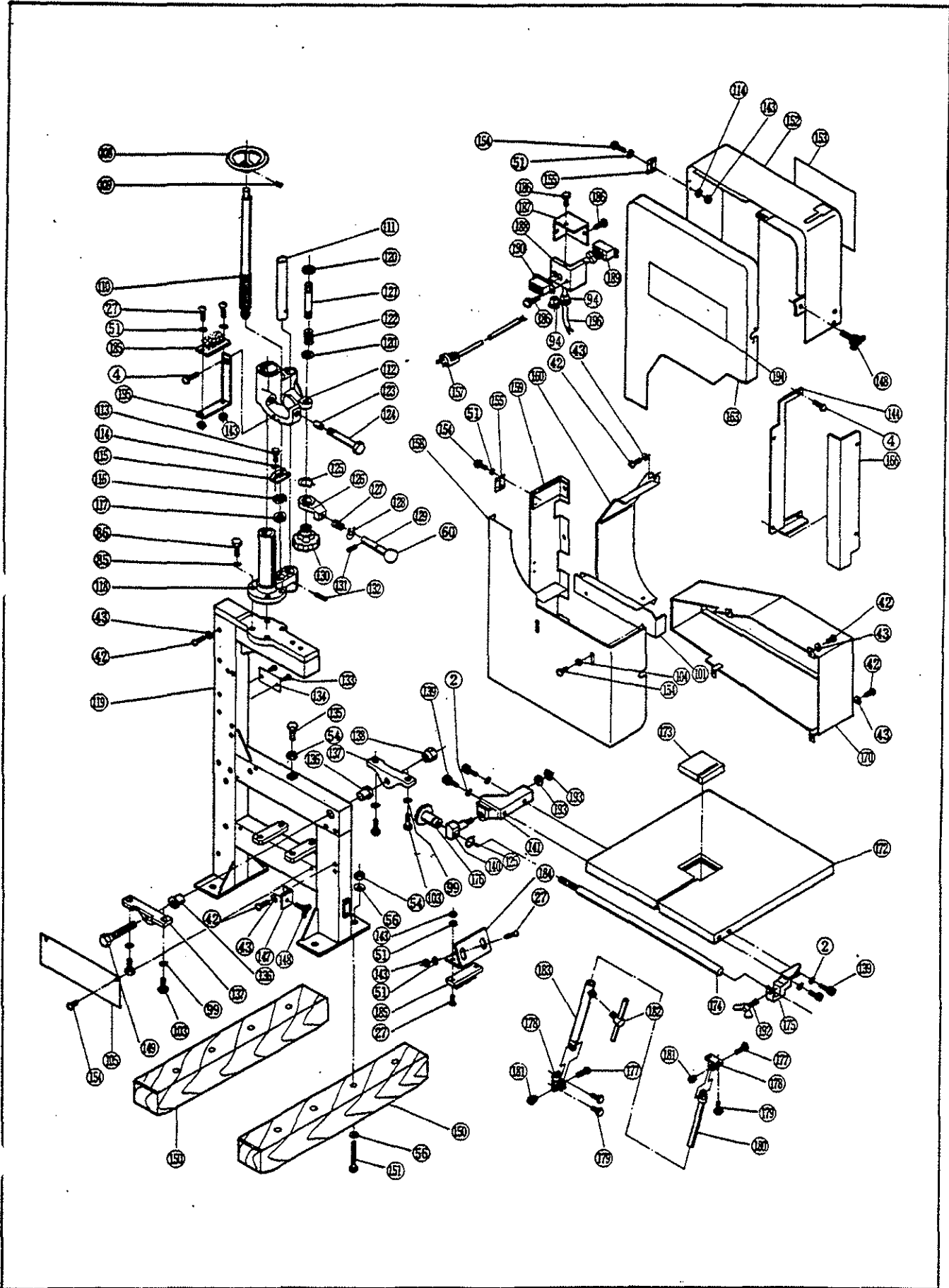
BAND SAW

BS-360NR



BAND SAW

BS-360NR



**PARTS LIST FOR AFTER SALES SERVICE
MODEL BS360NR**

QTY	PART NO.	DESCRIPTION	QTY	REF	PART NO.	DESCRIPTION	QTY
	6130200	HEX HEAD BOLT M8X20	1	56	9571000	WASHER	5
2	9550800	SPRING WASHER M8	9	57	9191070	HEX HEAD BOLT M10X70	1
3	6900579	INSIDE PLATE	1	58	9280615	CLAMP SCREW M6X15	1
4	9020510	PHILLIPS PAN SCREW M5X10	19	59	6860238	V-BELT	2
5	6152353	BEARING PLATE	2	60	6831328	GRIP	1
6	9846206	BALL BEARING #6205LLB	3	61	6831399	BRAKE LEVER	1
7	6860269	TOP WHEEL	1	65	6130701	BRAKE BOLT M6X65	1
8	6900583	INSIDE BEARING COLLAR	1	66	6900582	BRAKE BOLT COLLAR	1
9	6900580	OUTSIDE BEARING COLLAR	1	67	6900581	BRAKE COLLAR	1
10	6100505	TOP WHEEL SHAFT	1	68	6130704	HEX HEAD BOLT (L.H.T.) M8X20	1
11	6031734	MOTOR ASS'Y	1	69	6220195	WHEEL PLATE	1
11-1	9020508	PHILLIPS PAN SCREW M5X8	2	70	9550600	SPRING WASHER M6	15
12	6800022	TAIL COVER	1	71	9300600	HEX NUT M6	1
13	9280506	CLAMP SCREW M5X6	2	72	6860270	BOTTOM WHEEL	1
14	6930017	SEAL	1	73	9020514	PHILLIPS PAN SCREW M5X14	11
15	6570025	BRUSH HOLDER	2	74	6152530	BEARING PLATE	1
16	6540063	CARBON BRUSH SET	1	75	9846206	BALL BEARING #6206ZZ	1
17	6570005	BRUSH CAP	2	78	6190341	BEARING CASE (B)	1
18	9846200	BALL BEARING #6200LLB	2	79	6100532	BOTTOM WHEEL SHAFT	1
19	6500269	FIELD COIL	1	80	6100472	PARALLEL KEY	1
20	9550500	SPRING WASHER M5	2	81	6130673	BEARING PLATE NUT	1
21	9000575	PHILLIPS PAN SCREW M5X7.5	2	82	6330087	BEARING PLATE (B)	1
22	6031860	ARMATURE	1	83	6860199	V-PULLEY (L)	1
	6490010	FAN CASING	1	84	9220825	HEX SOCKET HEAD BOLT M8X25	4
24	9846201	BALL BEARING #6201LLB	1	85	9551000	SPRING WASHER M10	10
25	9643200	WAVE WASHER	1	86	9191035	HEX HEAD BOLT M10X35	8
26	6820696	GEAR CASE	1	87	6080339	GUIDE ASS'Y (A)	1
27	9020520	PHILLIPS PAN SCREW M5X20	4	88	9190612	HEX HEAD BOLT M6X12	3
28	9643000	WAVE WASHER	1	89	6152356	CORD COVER	1
29	9846201	BALL BEARING #6201LLB	1	90	9190625	HEX HEAD BOLT M6X25	4
30	9511600	RETAINING RING S-16	1	91	6152527	CLAMP METAL	4
31	6200487	FINAL GEAR	1	92	6360237	STRAIGHT GUIDE	8
32	6100231	PARALLEL KEY	1	93	6080340	GUIDE ASS'Y (B)	1
33	6110193	GEAR SHAFT	1	94	6590472	BUSH	2
34	6152398	BEARING PLATE (D)	1	95	9191025	HEX HEAD BOLT M10X25	2
35	6820699	GEAR CASE COVER	1	96	6190307	FRAME HEAD	1
36	6801416	MOTOR HOUSING	1	97	6100478	ECCENTRIC SHAFT	1
37	9020520	PHILLIPS PAN SCREW M5X20	4	98	6831270	HANDLE	1
38	9020512	PHILLIPS PAN SCREW M5X12	4	100	9300800	HEX NUT M8	3
39	9846205	BALL BEARING #6205LLB	1	101	6152509	COVER (B)	1
40	6520189	CORD ASS'Y AWG#16X2	1	102	6960111	GUIDE BAR	1
48	6100511	PARALLEL KEY	1	103	9190825	HEX HEAD BOLT M8X25	5
49	6860201	PULLEY (S)	1	105	6152521	COVER	1
50	6390182	BRAKE SHOE	1	108	6831267	HANDLE	1
51	9570500	WASHER	1	109	9404025	SPRING PIN	1
52	9000525	PHILLIPS PAN SCREW M5X25	2	110	6130678	SCREW	1
	9191085	HEX HEAD BOLT M10X85	1	111	6960105	GUIDE BAR	1
	9301000	HEX NUT M10	7	112	6190261	RAM	1
55	6152506	BRACKET FOR MOTOR	1	113	9220515	HEX SOCKET HEAD BOLT M5X15	3

**PARTS LIST FOR AFTER SALES SERVICE
MODEL BS360NR**

REF	PART NO.	DESCRIPTION	QTY	REF	PART NO.	DESCRIPTION	QTY
114	9550500	SPRING WASHER M5	2	174	6960112	SCALE GUIDE BAR	1
115	6152269	SCREW PLATE	1	175	6190308	SCALE GUIDE BRACKET	1
116	6220194	LINK GUIDE	2	176	6130672	ADJUSTMENT NUT	1
117	9991101	THRUST BEARING	1	177	6130697	TAPER BOLT	2
118	6190258	RAM	1	178	6152350	BRACKET	2
119	6801441	FRAME	1	179	9220815	PHILLIPS SOCKET BOLT M8X15	4
120	9571200	WASHER	1	180	6100503	TABLE STAY SHAFT	1
121	6130700	ADJUSTMENT BOLT	1	181	6130698	TAPER NUT (A)	2
122	6180327	COMPRESSION SPRING	1	182	6831300	HANDLE	1
123	6900573	COLLAR	1	183	6220196	TABLE STAY ASS'Y	1
124	6130010	HEX HEAD BOLT M12X100	1	184	6152524	BRUSH PLATE	1
125	9512400	RETAINING RING S-24	2	185	6090343	SWEEP BRUSH	2
126	6190263	RATCHET BRACKET	1	186	9020406	PHILLIPS PAN SCREW M4X6	1
127	6180328	COMPRESSION SPRING	1	187	6152362	SWITCH COVER (B)	1
128	9511000	RETAINING RING S-10	1	188	6152359	SWITCH COVER (A)	1
129	6100479	RATCHET BAR	1	189	6550337	PUSH BUTTON SWITCH	1
130	6831276	ADJUSTMENT KNOB	1	190	6151822	SWITCH COVER	1
131	9404020	SPRING PIN	1	192	9240825	WING BOLT M8X25	1
132	9406040	SPRING PIN	1	193	9321200	HEX NUT M12	2
133	6120005	RIVET #2	2	194	6920801	MODEL NAME PLATE	1
134	6912404	NAME PLATE	1	195	6152533	UPPER BRUSH PLATE	1
135	9191030	HEX HEAD BOLT M10X30	1	197	6130012	WOODEN SCREW M2.1X10	5
136	6220197	BUSH	2	198	6920176	CAUTION LABEL	1
137	6190340	TABLE BRACKET	2	200	9846200	BALL BEARING #6200LLB	1
138	6130699	TAPER NUT (B)	1	201	6831477	KNOB	2
140	6100534	GUIDE BAR HOLDER	1	202	9020520	PHILLIPS PAN SCREW M5X20	6
141	6850420	AUX. SHOE	1	203	9551200	SPRING WASHER M12	1
143	9300500	HEX NUT M5	8	204	6152515	GUIDE HOLDER	1
144	6152512	SAW COVER BRACKET	1	205	6590173	CORD CLAMP	1
145	6100535	BEARING PIN	1	206	9020410	PHILLIPS PAN SCREW M4X10	29
146	6152518	BEARING HOLDER	1	208	9300400	HEX NUT M4	28
147	6080535	CLAMP METAL	1	—	6560019	TERMINAL	5
148	6131051	KNOB BOLT M8X15	3	—	6900565	THRUST WASHER	1
149	6100504	FULCRUM SHAFT	1	—	6900751	SPACER 0.1	1
150	6390178	WOODEN BASE	2	—	6900752	SPACER 0.2	1
151	6130168	WOODEN SCREW M9X65	4	—	6900753	SPACER 0.3	1
152	6880892	COVER PLATE (A)	1	—	6900754	SPACER 0.4	1
153	6920758	SEAL	1	—	6900755	SPACER 0.5	1
155	6290089	HINGE	7				
157	6520234	CORD ASS'Y AWG#14X3X2	1				
158	6880890	WHEEL COVER (B)	1	STANDARD ACCESSORIES			
159	6880894	COVER PLATE (B)	1	500	6080337	SCALE ASS'Y	1
160	6880900	SLIDE COVER	1	500-1	9221065	HEX SOCKET HEAD BOLT M10X6	1
163	6880886	WHEEL COVER (T)	1	500-2	6850390	SCALE STAND	1
166	6880850	SAW COVER	1	500-3	6130669	KNOB BOLT M10X25	1
169	9000630	PHILLIPS PAN SCREW M6X30	1	501	6240113	OPEN-END WRENCH	1
170	6880898	BELT COVER	1	—	6241073	OPEN-END WRENCH	1
172	6850456	SHOE	1	502	6241123	HEX KEY WRENCH	1
173	6390195	WOODEN PLATE	1	503	6630433	BAND SAW BLADE STELITE	1