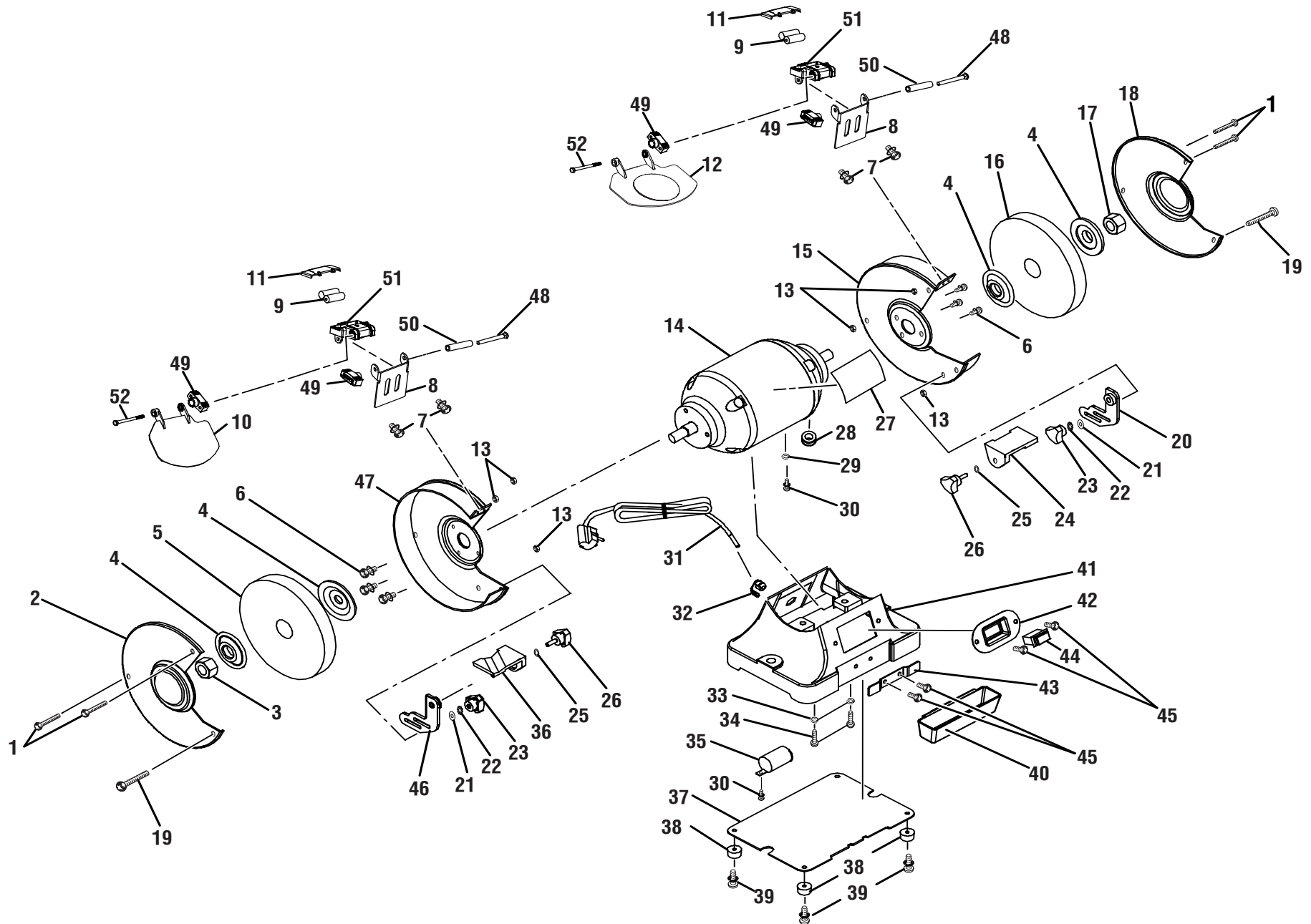


RYOBI BENCH GRINDER - MODEL NUMBER BG828



RYOBI BENCH GRINDER – MODEL NUMBER BG828

The model number will be found on label attached to the motor housing. Always mention the model number in all correspondence regarding your **BENCH GRINDER** or when ordering repair parts.

PARTS LIST (FIGURE A)

KEY NO.	PART NUMBER	DESCRIPTION	QTY	KEY NO.	PART NUMBER	DESCRIPTION	QTY
1	089150100007	Screw (M5 x 48 mm, Pan Hd.).....	4	29	602601	Toothed Lock Washer.....	1
2	089150113001	Left Wheel Cover.....	1	30	089150114019	Screw Assembly (M4 x 8 mm, Phillips Hd.).....	2
3	800401	Hex Nut (M16, Left Hand).....	1	31	602301	Cord & Plug.....	1
4	800504	Wheel Flange.....	4	32	602201	Cord Clamp.....	1
5	806002	Grinder Wheel (60 Grit).....	1	33	089150113009	Spring Washer (D8).....	2
6	089150113002	Screw Assembly (M5 x 10 mm, Phillips Hd.).....	6	34	089150113010	Hex Bolt (M8 x 20 mm).....	2
7	089150114001	Screw (M5 x 8 mm, Philips Hd.).....	4	35	089150113011	Capacitor (20uF/300V).....	1
8	089150114002	Spark Deflector.....	2	36	089150100810	Left Moveable Work Rest.....	1
9	**	Batteries (AAA).....	2	37	089150113012	Base Plate.....	1
10	089150114005	Eye Shield.....	1	38	089150113013	Rubber Foot.....	4
11	089150114022	Battery Cap.....	2	39	089150113014	Screw Assembly (M5 x 16 mm, Phillips Hd.).....	4
12	089150114009	Magnified Eye Shield.....	1	40	089150113017	Coolant Tray.....	1
13	089150112002	Hex Nut (M5).....	6	41	089150113015	Base.....	1
14	089150113700	Motor Assembly.....	1	42	605101	Switch Plate.....	1
15	089150113001	Right Safety Guard Plate Assembly.....	1	43	089150113016	Coolant Tray Clip.....	1
16	803602	Grinding Wheel (36 Grit).....	1	44	602101	Switch.....	1
17	802601	Hex Nut (M16).....	1	45	089150113026	Screw (M4 x 8 mm, Philips Hd.).....	4
18	089150113008	Right Wheel Safety Guard Cover.....	1	46	089150102801	Left Work Rest Basket.....	1
19	089150100006	Carrriage Bolt (M5 x 51 mm).....	2	47	089150113001	Left Safty Guard Plate.....	1
20	089150102004	Right Bracket Work Rest.....	1	48	089150114003	Carriage Bolt (M5 x 55 mm).....	2
21	602704	Big Washer (5 mm).....	2	49	089150114004	Locking Knob.....	4
22	089150100004	Toothed Lock Washer.....	2	50	089150114006	Spacer.....	2
23	089150100003	Work Rest Lock Knob.....	2	51	089150114007	Led Light Assembly.....	2
24	089150100802	Right Movable Work Rest.....	1	52	089150114008	Bolt (M5 x 55 mm, Hex Hd.).....	2
25	601204	Washer (6 mm).....	2	NOT SHOWN			
26	089150100801	Work Rest Lock Knob (M6 x 17 mm).....	2		990000670	Operator's Manual	
27	089150113900	Data Label.....	1		3-14-14		
28	601901	Grommet.....	1		(Rev:01)		

WARNING: Improper repair of a double insulated tool can result in damage to the double insulation system possibly causing electrical shock or electrocution. Any repairs requiring disassembly of your tool requires safety testing and should only be performed by a Ryobi Authorized Service Center. For the service center nearest you call 1-800-525-2579.

** Maybe be purchased at your nearest retail store.