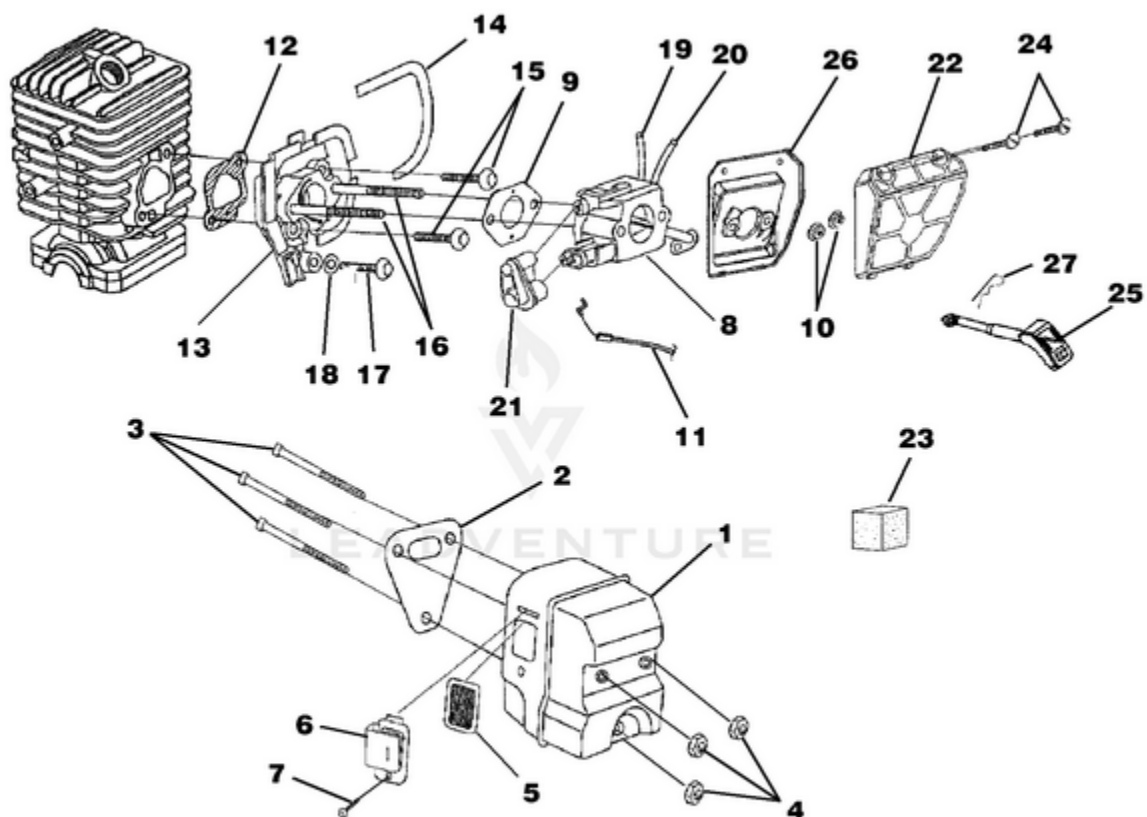


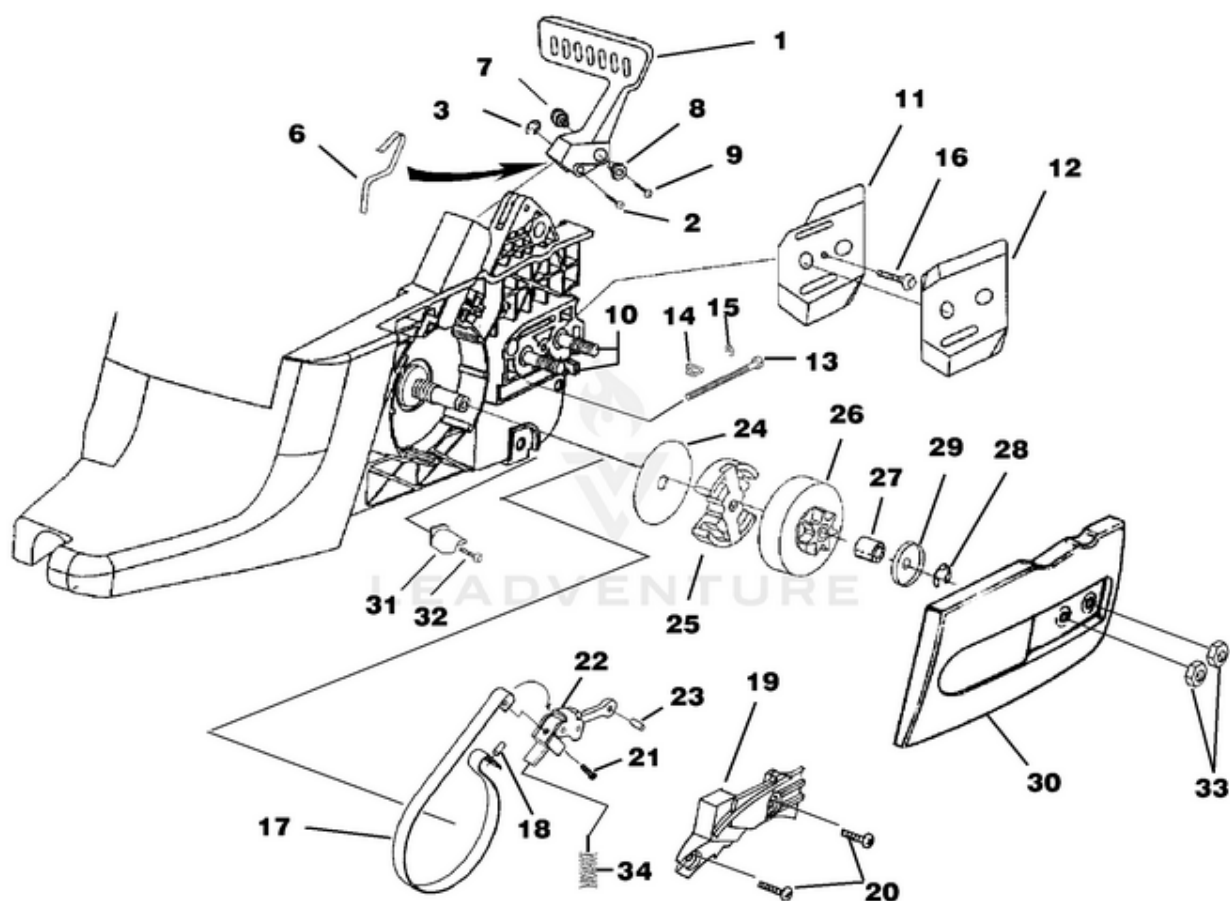
BCS35 Chain Saw UT-10878 10878-UT BCS35 Chain Saw UT-10878 BCS35 Chain saw - Carburetor -
Muffler - Air Filter



Rendered by LeadVenture, Inc.

Ref #	Part #	Description	Qty
1	UP06752	Muffler Kit	1
	UP00126	Muffler Kit	1
2	UP04183	Muffler Gasket	1
3	UP04049	Screw-Square Hd.	3
4	UP04059	Nut-Locking Hex (10-32)	3
5	UP04203	Screen, Spark	1
6	UP04204	Deflector, Muffler	1
	UP04069	Deflector, Muffler	1
7	UP04244	Screw	1
8	UP06737	Carburetor Assy	1
	UP00125	Carburetor Assy	1
	A09160	Carburetor Assy	1
	UP00499	Carburetor Assy	
9	UP04094	Carburetor Gasket	1
10	UP04217	Flange Nut (10-24)	2
11	UP04218	Throttle Cable	1
12	UP04184	Gasket, Heat Dam	1
13	UP04173	Heat Dam	1
14	UP04191	Seal, Heat Dam	1
15	UP04084	Screw, Truss Hd. Taptite (10-24 x 7/8")	2
16	UP04189	Screw, Carburetor	2
17	UP03897	Screw, Thread Form (10-14 x 1/2")	1
18	UP03867	Washer, Retaining	1
19	UP04211	Fuel Line (Tank to Carburetor 8 1/2")	1
20	UP04209	Fuel Line (Carburetor to Purge Bulb 4")	1
21	UP04171	Carburetor Grommet	1
	UP06753	Air Filter Kit	1
22	UP04533	Air Filter Cover	1
23	UP04208	Pre Filter (In engine housing)	1
24	UP04235	Screw-Slotted Pan Hd. (8-16 x 5/8")	2
25	UP04213	Rod, Choke	1
26	UP04178	Air Filter Plate	1
27	UP04227	Spring Clip (Choke Rod)	1

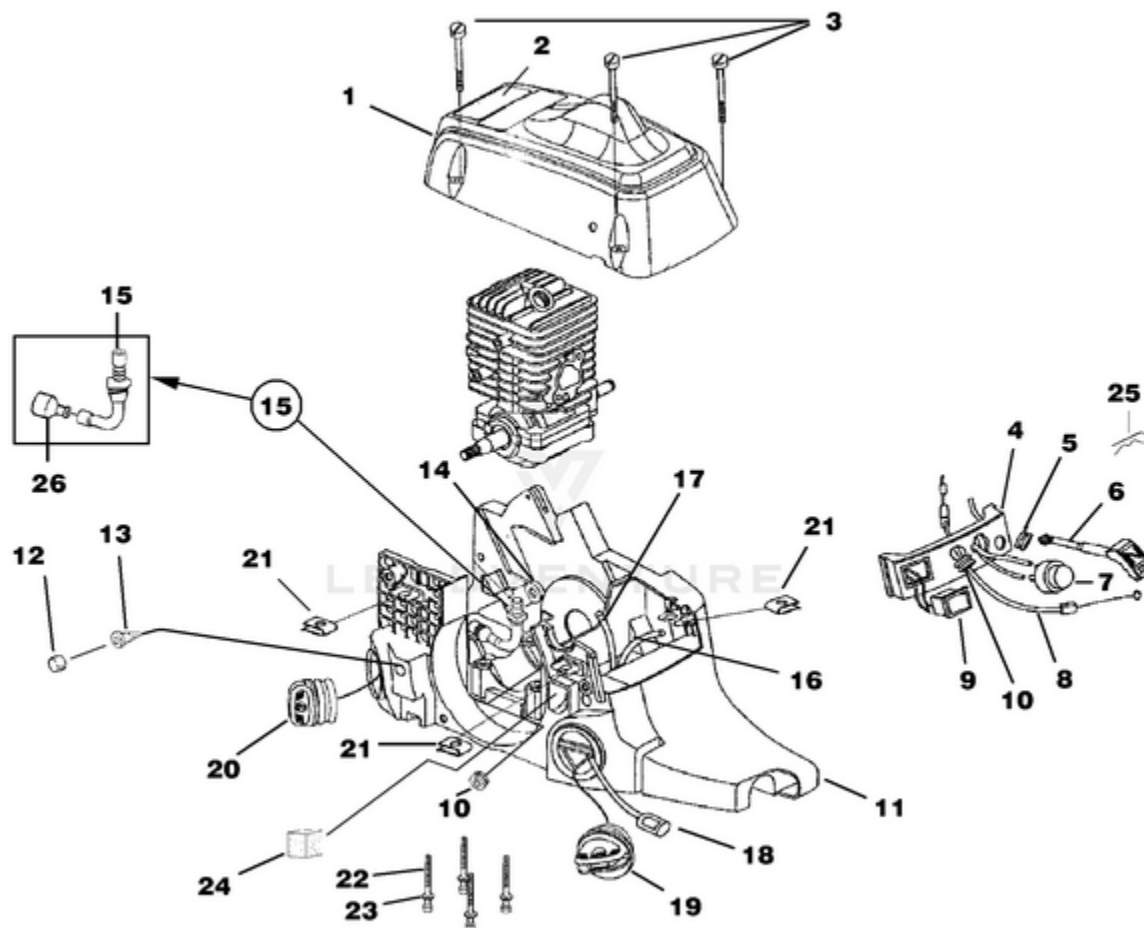
BCS35 Chain Saw UT-10878 10878-UT BCS35 Chain Saw UT-10878 BCS35 Chain saw - Clutch - Chain Brake -
Drive Case Cover



Rendered by LeadVenture, Inc.

Ref #	Part #	Description	Qty
1	UP06568	Hand Guard Kit	1
2	UP04214	Hand Guard Actuating Pin	1
3	UP04056	Retaining Ring	1
4	UP04207	Hand Guard Link	1
5	UP04090	Roll Pin	1
6	UP04224	Spring, Handguard	1
7	UP04202	Pivot, L.H.	1
8	UP04201	Pivot, R.H.	1
9	UP04240	Screw, Hex Socket Hd. (8-32 x 5/8")	1
10	UP04180	Guide Bar Bolt	2
	UP06966	Guide Bar Adjusting Kit	1
11	UP04206	Plate, Guide Bar	1
12	UP04085	Plate, Guide Bar	1
13	UP04187	Screw, Guide Bar Adjusting	1
14	UP04186	Pin, Guide Bar Adjusting	1
15	UP04056	Ring, Retaining	1
16	UP04082	Screw, Thread Form (6-19 x 1/2")	1
17	A08680A	Chain Brake Kit	1
18	UP04181	Pin, Roll	1
19	UP04309	Cover, Chain Brake	1
20	UP04082	Screw, Pan Hd. (6-19 x 1/2")	2
21	UP04239	Screw, Pan Hd. (8-16 x .320)	1
22	UP04223	Chain Brake Link	1
23	UP04090	Pin, Roll	1
24	UP04182	Thrust Washer	1
25	UP06727	Clutch & Hardware	1
26	UP06967	Sprocket, Drum (3/8 Pitch)	1
	UP04560	Sprocket, Drum (.325 Pitch)	1
27	UP04175	Bearing, Needle	1
28	UP04228	Ring, Retaining	1
29	UP04179	Washer, Cupped	1
30	UP06975	Drive Case Cover	1
31	UP04088	Stop, Chain	1
32	UP03900	Screw, Thread Form (10-14 x 3/4")	1
33	UP04058	Nut, Hex	2
34	UP04032	Spring, Compression	1

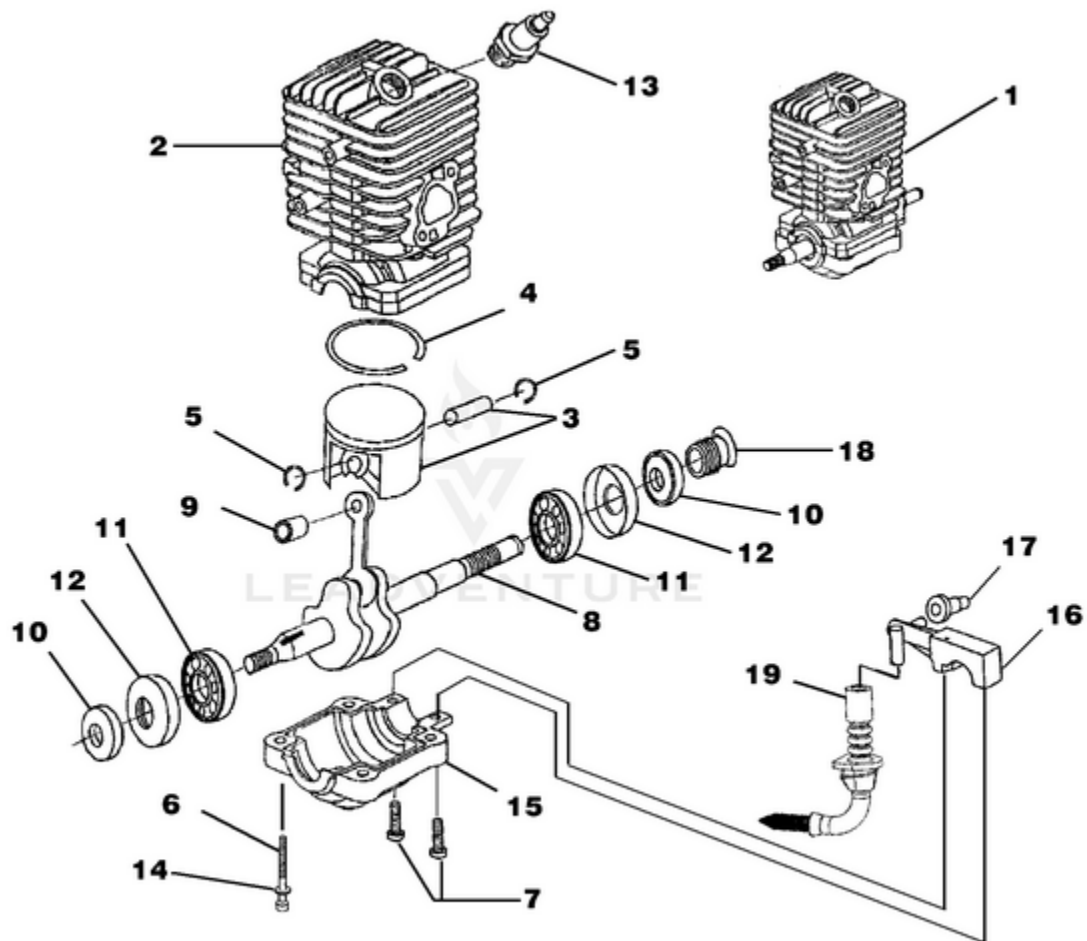
BCS35 Chain Saw UT-10878 10878-UT BCS35 Chain Saw UT-10878 BCS35 Chain saw - Engine Housing -
Fuel Tank - Oil Tank



Rendered by LeadVenture, Inc.

Ref #	Part #	Description	Qty
1	A08692	Cylinder Cover Kit	1
2	UP04212	Safety Decal	1
3	UP04219	Screw-Slotted Pan Hd.	3
4	UP04193	Control Panel	1
5	UP04052	Grommet	1
6	UP04213	Rod, Choke	1
7	UP04033	Bulb, Air Purge	1
8	UP04218	Throttle Cable	1
9	UP04197	Switch, Rocker	1
10	UP04215	Grommet - Split	2
11	UP06754	Engine Housing	1
12	UP04205	Element, Filter (Bronze)	2
13	UP04045	Duck Bill Valve	2
14	UP04185	Oil Outlet Grommet	1
15	UP04048	Oil Intake Tube	1
16	UP04210	Rubber Tubing (5 1/2")	1
17	UP04211	Rubber Tubing (8 1/2")	1
18	UP03871	Fuel Filter	1
19	DA07590	Fuel Cap w/ Retainer	1
20	DA07591	Oil Cap w/ Retainer	1
	UP04054	Oil Filter	1
	UP04180	Guide Bar Bolt	2
21	UP04221	Speed Nut ("U-Type")	3
22	UP04083	Screw, Cap-Socket Hd. (10-24 x 2")	4
23	UP04087	Washer	4
24	UP04208	Pre Filter	1
25	UP04227	Spring Clip (Choke Rod)	1
26	UP04054	Oil Filter	1

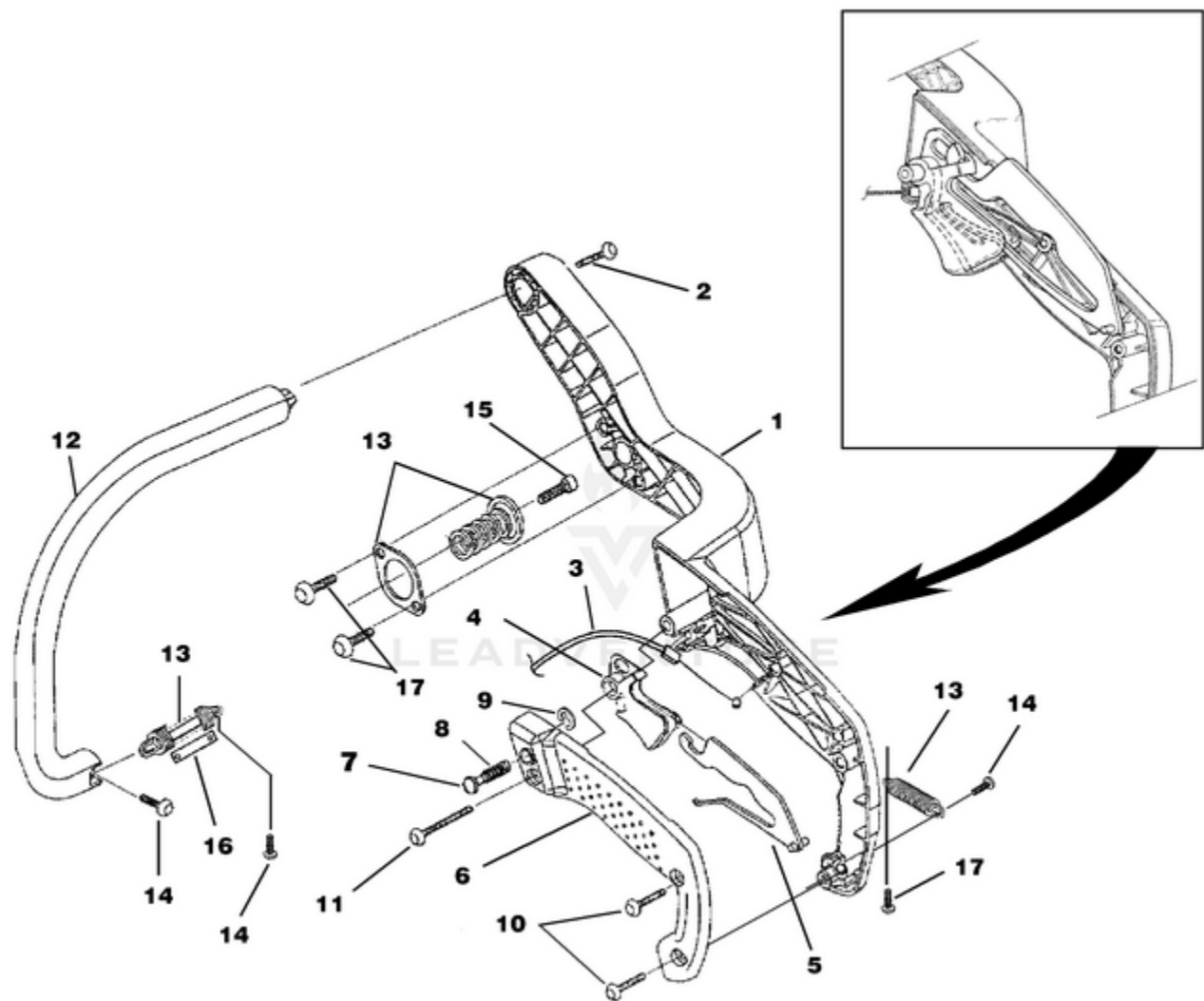
BCS35 Chain Saw UT-10878 10878-UT BCS35 Chain Saw UT-10878 BCS35 Chain saw - Engine Internal - Oil Pump



Rendered by LeadVenture, Inc.

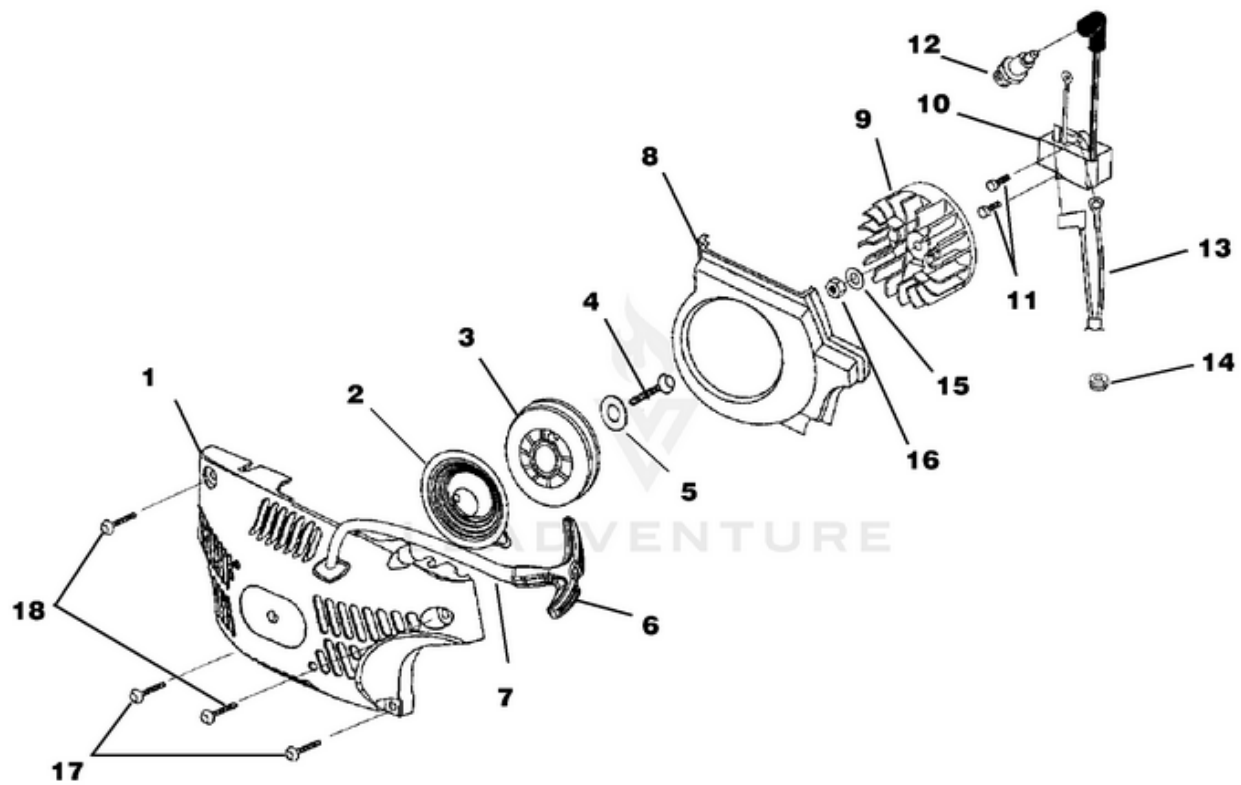
Ref #	Part #	Description	Qty
1	UP03119	Short Block	1
	UP04161	Short Block	1
	UP04166	Short Block	1
2	A08666	Cylinder Kit	1
	A08667	Cylinder Kit	1
	UP00129	Cylinder Kit	1
	UP04183	Gasket, Muffler	1
	UP04184	Gasket, Heat Dam	1
	UP04094	Gasket, Carburetor	1
3	UP06971	Piston & Pin	1
4	UP04177	Piston Ring	1
5	UP04051	Ring, Retaining	2
3	A08669	Piston & Pin	1
4	UP04190	Piston Ring	1
5	UP04051	Ring, Retaining	2
3	UP00130	Piston & Pin	1
4	UP04231	Piston Ring	1
5	UP04051	Ring, Retaining	2
6	UP04083	Screw, Cap-Socket Hd. (10-24 x 2")	4
7	UP03898	Screw, Pan Hd., Plastite (8-16 x 5/8")	2
8	UP03118	Crankshaft & Rod Assy	1
	UP04165	Crankshaft & Rod Assy	1
9	UP04174	Bearing, Needle	1
10	UP04047	Shaft Seal	2
11	UP04176	Bearing & Rubber Case	2
12	UP04046	Rubber Case	2
13	UP04093	Spark Plug	1
14	UP04087	Washer	4
15	UP04172	Lower Crankcase	1
	UP04232	Lower Crankcase	1
16	UP06602	Oil Pump Kit	1
17	UP04185	Grommet, Oil Outlet	1
18	UP04188	Left Hand Worm	1
19	UP04048	Oil Intake Tube w/Filter	1

BCS35 Chain Saw UT-10878 10878-UT BCS35 Chain Saw UT-10878 BCS35 Chain saw - Handles



Rendered by LeadVenture, Inc.

Ref #	Part #	Description	Qty
1	A08675	Rear Handle Kit	1
2	UP04234	Screw-Pan Hd. (12-14 x 1 1/2")	1
3	UP04218	Throttle Cable	1
4	UP04195	Trigger, Throttle	1
5	UP04196	Throttle Lock Out	1
6	A08683	Handle Cover Kit	1
7	UP04199	Throttle Lock Pin	1
8	UP04226	Spring, Compression	1
9	UP04050	Ring, Retainer	1
10	UP03900	Screw, Thread Form (10-14 x 3/4")	2
11	UP04238	Screw, Thread Form (10-14 x 1 3/8")	1
12	UP06973	Front Handle Kit	1
	UP04234	Screw-Pan Hd. (12-14 x 1 1/2")	1
13	A08677	Isolator Kit	1
14	UP04237	Screw, Truss Hd. (10-14 x 5/8")	3
15	UP04233	Screw, Truss Hd. (10-24 x 5/8")	1
16	UP04200	Limiter, Isolator	1
17	UP03897	Screw, Thread Form (10-14 x 1/2")	3



Rendered by LeadVenture, Inc.

Ref #	Part #	Description	Qty
1	UP06749	Starter Kit	1
2	UP04092	Spring & Container	1
3	UP05460	Pulley, Starter	1
4	UP04237	Screw, Thread Form (10-14 x 5/8")	1
5	UP04089	Washer, Retaining	1
6	UP04216	Grip, Starter	1
7	UP03911	Rope, Starter 46"	1
8	UP04192	Baffle, Fan Housing	1
9	UP05850	Rotor & Starter Pawl	1
10	A08676A	Ignition Kit	1
	UP05851	Ignition Kit	1
11	UP04086	Screw, Thread Form (8-32 x 5/8")	2
12	UP05875	Spark Plug	1
13	UP04222	Ignition Switch Harness	1
14	UP04215	Grommet, Wire Harness (Split)	1
15	UP04241	Washer, Flat	1
16	UP04081	Nut, Jam	1
17	UP04236	Screw, Truss Hd. (10-14 x 7/8")	2
18	UP04237	Screw, Truss Hd. (10-14 x 5/8")	2

No
Diagram
Available



LEADVENTURE

Parts List
Only

Ref #	Part #	Description	Qty
	PT12371MD	Guide Bar (Power Tip) 12" (3/8" pitch)	
	H1N7245AH	Chain (3/8" pitch)	
	PT14371MD	Guide Bar (Power Tip) 14" (3/8" pitch)	
	H1N7252AH	Chain (3/8" pitch)	
	PT16371MD	Guide Bar (Power Tip) 16" (3/8" pitch)	
	H1N7256AH	Chain (3/8" pitch)	
	PT18371MD	Guide Bar (Power Tip) 18" (3/8" pitch)	
	H1N7262AH	Chain (3/8" pitch)	
	PL13321MA	Guide Bar (Power Tip) 13" (.325 pitch)	
	D1L7256AH	Chain or D1L7356AH (.325 pitch)	
	PL15321MA	Guide Bar (Power Tip) 15" (.325 pitch)	
	D1L7264AH	Chain (.325 pitch)	
	D1L7364AH	Chain (.325 pitch)	
	PT16321MA	Guide Bar (Power Tip) 16" (.325 pitch)	
	D1L7266AH	Chain (.325 pitch)	
	D1L7366AH	Chain (.325 pitch)	
	PT18321MA	Guide Bar (Power Tip) 18" (.325 pitch)	
	D1L7272AH	Chain (.325 pitch)	
	D1L7372AH	Chain (.325 pitch)	
	PT20321MA	Guide Bar (Power Tip) 20" (.325 pitch)	
	D1L7278AH	Chain (.325 pitch)	
	D1L7378AH	Chain (.325 pitch)	
	PS24823	Sealant Silicon	
	UP06561	Rubber tubing (10')	
	09207	Wrench - Combination	
	18416	Digital Tachometer	
	18453	Grease, Multi-purpose	
	94194	Compression Tester	
	UP07160	Bit, Torx T27	
	UP04562	Carry Case	
	UP06732	Bumper Spike Kit	