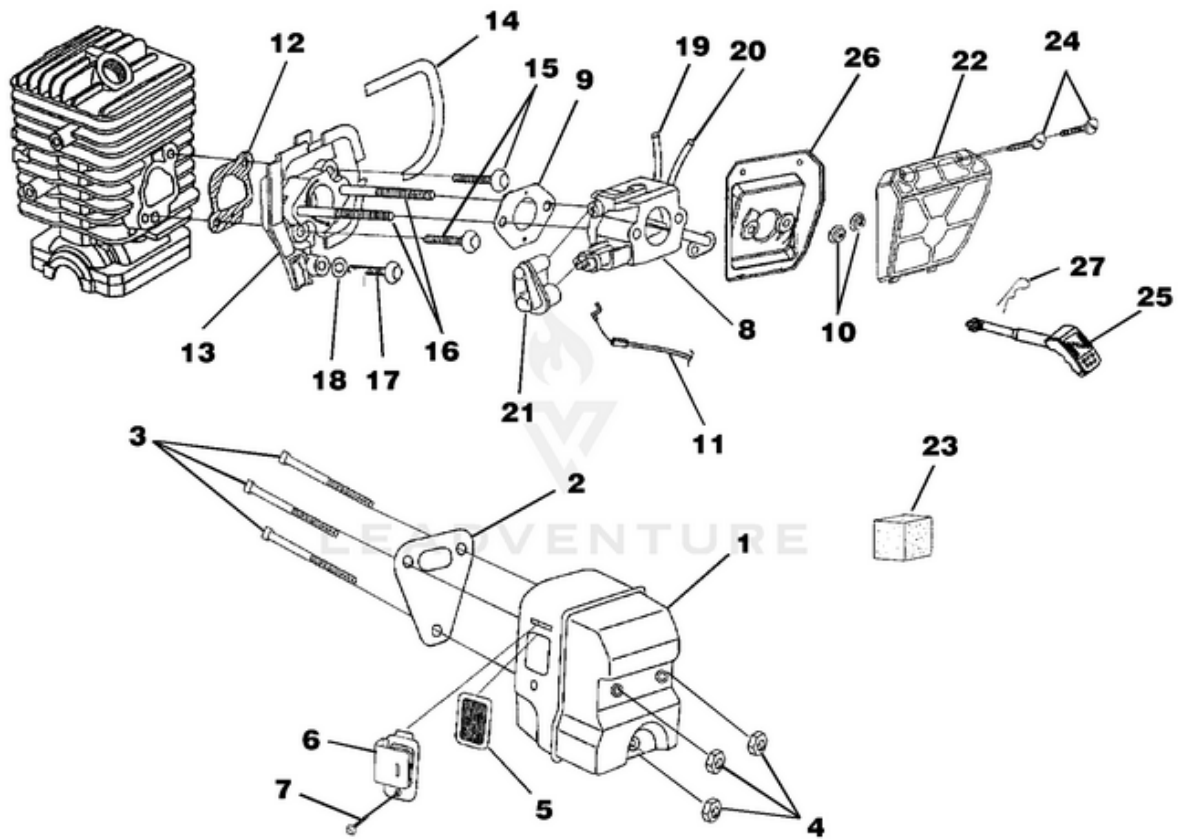


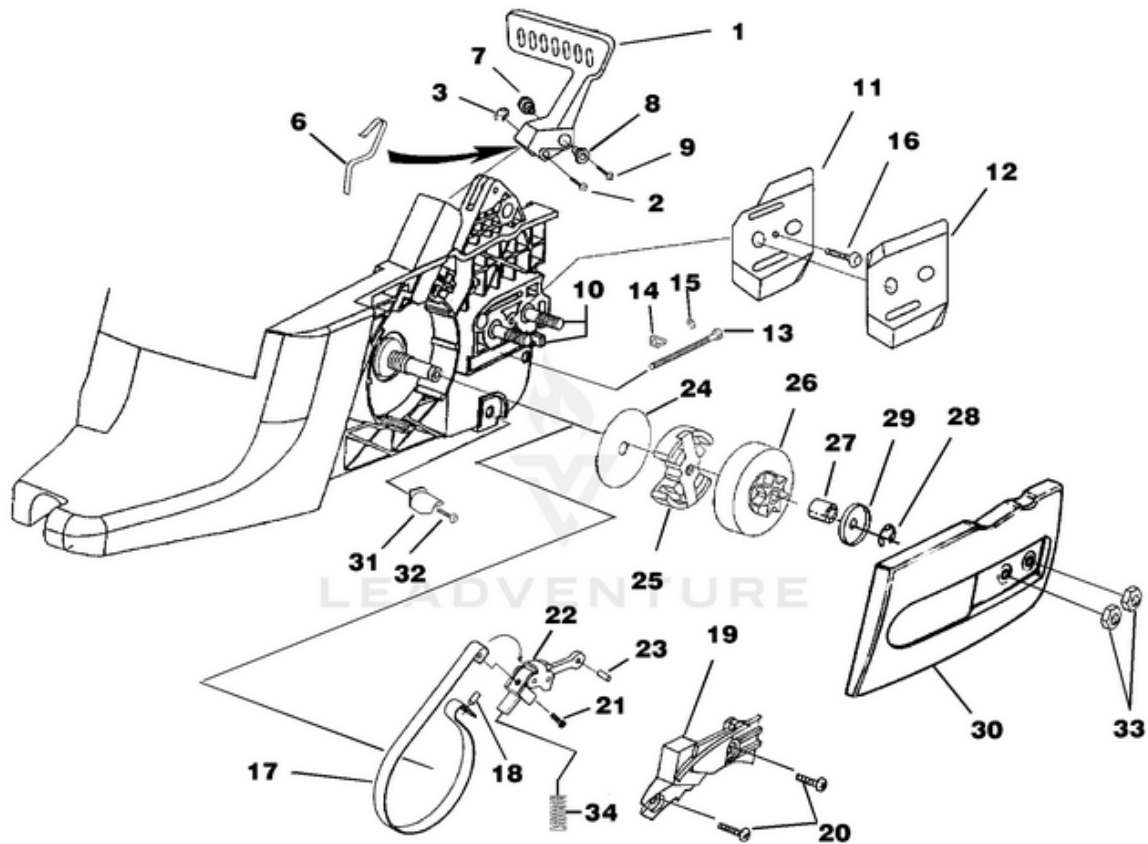
B2720 Chain Saw UT-10939 10939-UT B2720 Chain Saw UT-10939 B2720 Chain Saw - Carburetor - Muffler - Air Filter



Rendered by LeadVenture, Inc.

| Ref # | Part # | Description | Qty |
|-------|---------|---|-----|
| 1 | UP06752 | Muffler Kit | 1 |
| | UP00126 | Muffler Kit | 1 |
| 2 | UP04183 | Muffler Gasket | 1 |
| 3 | UP04049 | Screw-Square Hd. | 3 |
| 4 | UP04059 | Nut-Locking Hex (10-32) | 3 |
| 5 | UP04203 | Screen, Spark | 1 |
| 6 | UP04204 | Deflector, Muffler | 1 |
| | UP04169 | Deflector, Muffler | 1 |
| 7 | UP04244 | Screw | 1 |
| 8 | UP06737 | Carburetor Assembly | 1 |
| | UP00125 | Carburetor Assy | 1 |
| | A09160 | Carburetor Assy | 1 |
| 9 | UP04094 | Carburetor Gasket | 1 |
| 10 | UP04217 | Flange Nut (10-24) | 2 |
| 11 | UP04218 | Throttle Cable | 1 |
| 12 | UP04184 | Gasket, Heat Dam | 1 |
| 13 | UP04173 | Heat Dam | 1 |
| 14 | UP04191 | Seal, Heat Dam | 1 |
| 15 | UP04084 | Screw, Truss Hd. Taptite (10-24 x 7/8") | 2 |
| 16 | UP04189 | Screw, Carburetor | 2 |
| 17 | UP03897 | Screw, Thread Form (10-14 x 1/2") | 1 |
| 18 | 12789 | Washer, Retaining | 1 |
| 19 | UP04211 | Fuel Line (Tank to Carburetor 8 1/2") | 1 |
| 20 | UP04209 | Fuel Line (Carburetor to Purge Bulb 4") | 1 |
| 21 | UP04171 | Carburetor Grommet | 1 |
| | UP06753 | Air Filter Kit | 1 |
| 22 | UP04533 | Air Filter Cover | 1 |
| 23 | UP04208 | Pre Filter (In engine housing) | 1 |
| 24 | UP04235 | Screw-Slotted Pan Hd. (8-16 x 5/8") | 2 |
| 25 | UP04213 | Rod, Choke | 1 |
| 26 | UP04178 | Air Filter Plate | 1 |
| 27 | UP04227 | Spring Clip (Choke Rod) | 1 |

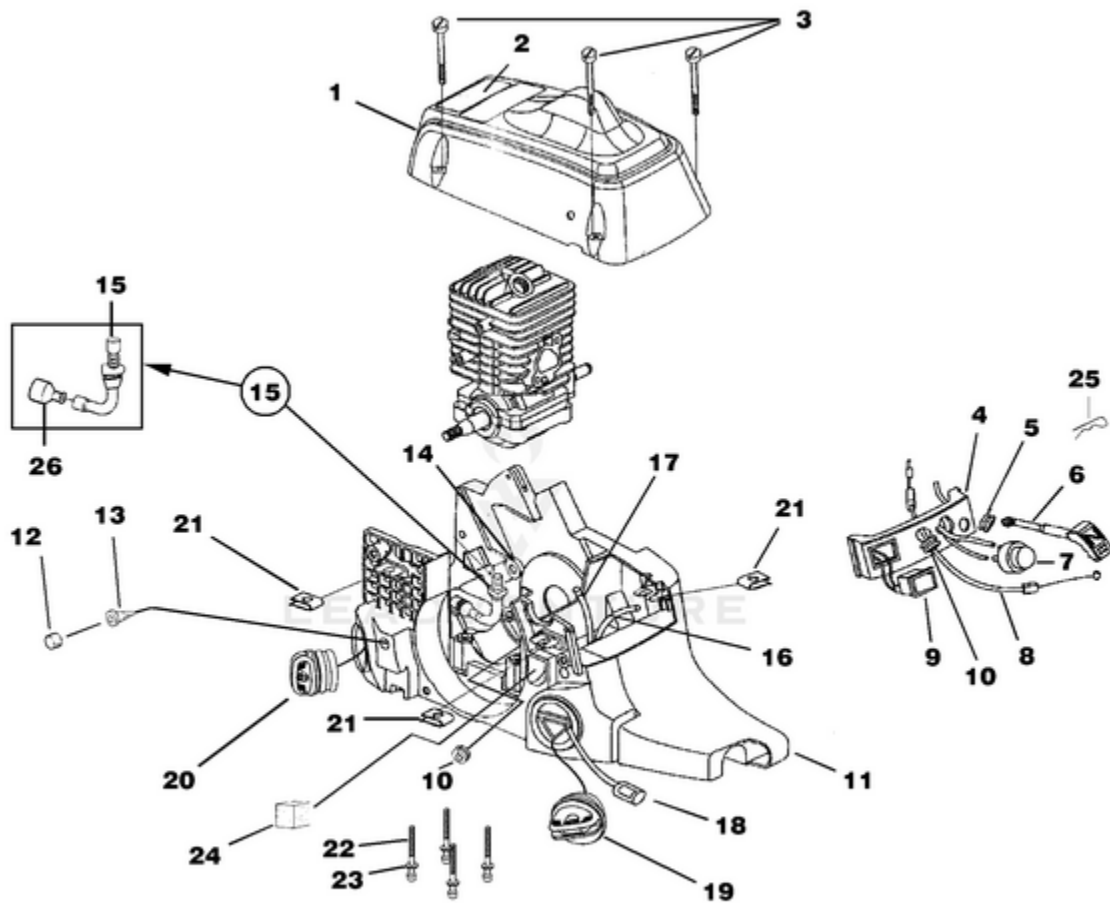
B2720 Chain Saw UT-10939 10939-UT B2720 Chain Saw UT-10939 B2720 Chain Saw - Clutch - Chain Brake - Drive
Case Cover



Rendered by LeadVenture, Inc.

| Ref # | Part # | Description | Qty |
|-------|---------|-------------------------------------|-----|
| 1 | UP06568 | Hand Guard Kit | 1 |
| 2 | UP04214 | Hand Guard Actuating Pin | 1 |
| 3 | UP04054 | Retaining Ring | 1 |
| 4 | UP04207 | Hand Guard Link | 1 |
| 5 | UP04090 | Roll Pin | 1 |
| 6 | UP04224 | Spring, Handguard | 1 |
| 7 | UP04202 | Pivot, L.H. | 1 |
| 8 | UP04201 | Pivot, R.H. | 1 |
| 9 | UP04240 | Screw, Hex Socket Hd. (8-32 x 5/8") | 1 |
| 10 | UP04180 | Guide Bar Bolt | 2 |
| | UP06966 | Guide Bar Adjusting Kit | 1 |
| 11 | UP04206 | Plate, Guide Bar | 1 |
| 12 | UP04085 | Plate, Guide Bar | 1 |
| 13 | UP04187 | Screw, Guide Bar Adjusting | 1 |
| 14 | UP04186 | Pin, Guide Bar Adjusting | 1 |
| 15 | UP04056 | Ring, Retaining | 1 |
| 16 | UP04082 | Screw, Thread Form (6-19 x 1/2") | 1 |
| 17 | A08680A | Chain Brake Kit | 1 |
| 19 | UP04309 | Cover, Chain Brake | 1 |
| 18 | UP04181 | Pin, Roll | 1 |
| 20 | UP04082 | Screw, Pan Hd. (6-19 x 1/2") | 1 |
| 21 | UP04239 | Screw, Pan Hd. (8-16 x .320) | 1 |
| 22 | UP04223 | Chain Brake Link | 1 |
| 23 | UP04090 | Pin, Roll | 1 |
| 24 | UP04182 | Thrust Washer | 1 |
| 25 | UP06727 | Clutch & Hardware | 1 |
| 26 | UP06967 | Sprocket, Drum (3/8 Pitch) | 1 |
| | UP04560 | Sprocket, Drum (.325 Pitch) | 1 |
| 27 | UP04175 | Bearing, Needle | 1 |
| 28 | UP04228 | Ring, Retaining | 1 |
| 29 | UP04179 | Washer, Cupped | 1 |
| 30 | UP06975 | Drive Case Cover | 1 |
| 31 | UP04088 | Stop, Chain | 1 |
| 32 | UP03900 | Screw, Thread Form (10-14 x 3/4") | 1 |
| 33 | UP04058 | Nut, Hex | 2 |
| 34 | UP04032 | Spring, Compression | 1 |

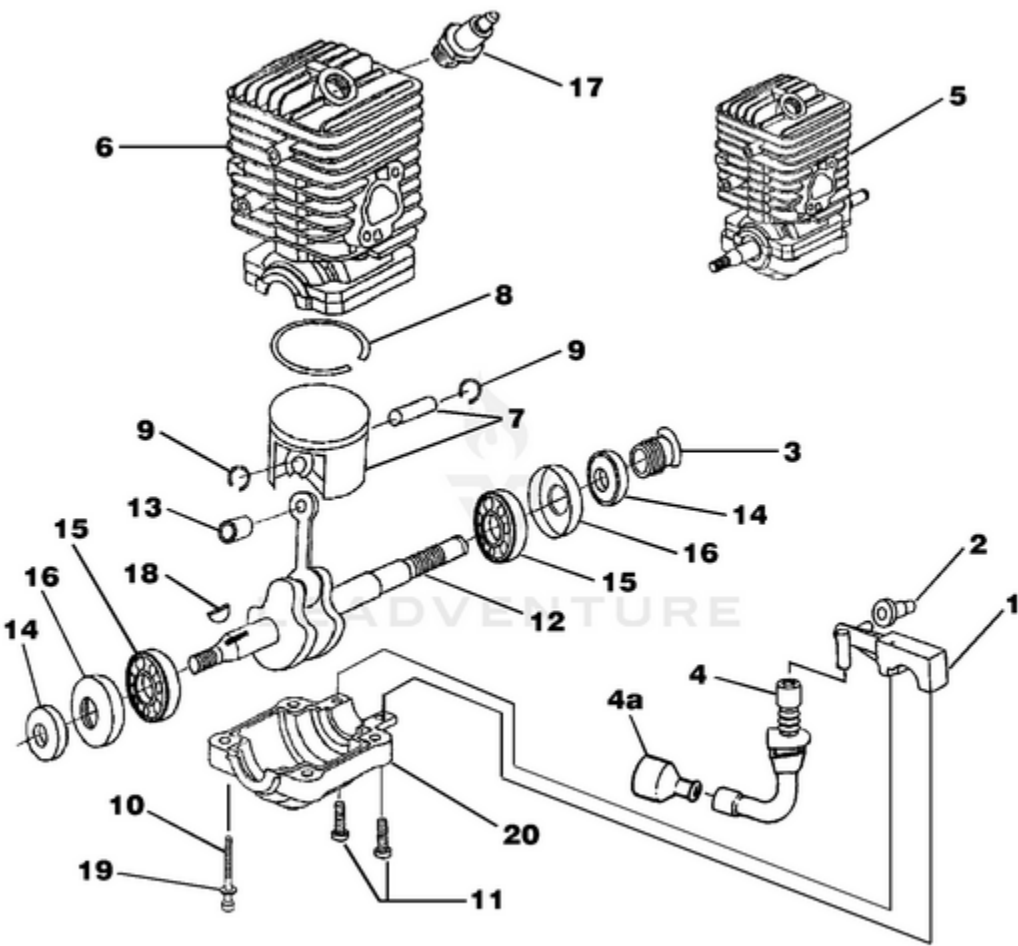
B2720 Chain Saw UT-10939 10939-UT B2720 Chain Saw UT-10939 B2720 Chain Saw - Engine Housing -
Fuel Tank - Oil Tank



Rendered by LeadVenture, Inc.

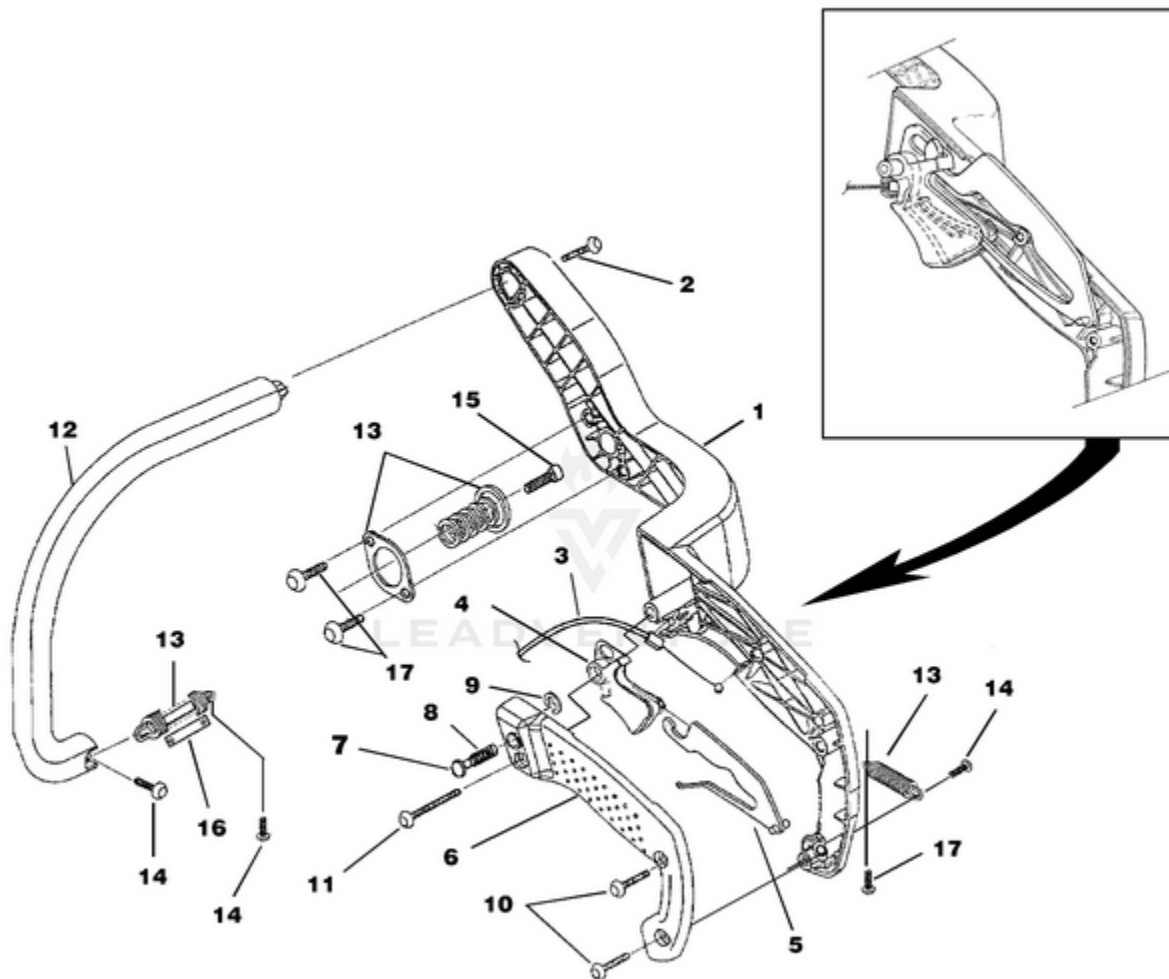
| Ref # | Part # | Description | Qty |
|-------|---------|------------------------------------|-----|
| 1 | A08692 | Cylinder Cover Kit | 1 |
| 2 | UP04212 | Safety Decal | 1 |
| 3 | UP04219 | Screw-Slotted Pan Hd. | 3 |
| 4 | UP04193 | Control Panel | 1 |
| 5 | UP04052 | Grommet | 1 |
| 6 | UP04213 | Rod, Choke | 1 |
| 7 | UP04033 | Bulb, Air Purge | 1 |
| 8 | UP04218 | Throttle Cable | 1 |
| 9 | UP04197 | Switch, Rocker | 1 |
| 10 | UP04215 | Grommet - Split | 2 |
| 11 | A08892 | Engine Housing | 1 |
| 12 | UP04205 | Element, Filter (Bronze) | 2 |
| 13 | UP04045 | Duck Bill Valve | 2 |
| 14 | UP04185 | Oil Outlet Grommet | 1 |
| 15 | UP04048 | Oil Intake Tube | 1 |
| 16 | UP04210 | Rubber Tubing (5 1/2") | 1 |
| 17 | UP04211 | Rubber Tubing (8 1/2") | 1 |
| 18 | UP03871 | Fuel Filter | 1 |
| 19 | DA07590 | Fuel Cap w/ Retainer | 1 |
| 20 | DA07591 | Oil Cap w/ Retainer | 1 |
| | UP04054 | Oil Filter | 1 |
| | UP04180 | Guide Bar Bolt | 2 |
| 21 | UP04221 | Speed Nut ("U-Type") | 3 |
| 22 | UP04083 | Screw, Cap-Socket Hd. (10-24 x 2") | 4 |
| 23 | UP04087 | Washer | 4 |
| 24 | UP04208 | Pre Filter | 1 |
| 25 | UP04227 | Spring Clip (Choke Rod) | 1 |
| 26 | UP04054 | Oil Filter | 1 |

B2720 Chain Saw UT-10939 10939-UT B2720 Chain Saw UT-10939 B2720 Chain Saw - Engine Internal - Oil Pump



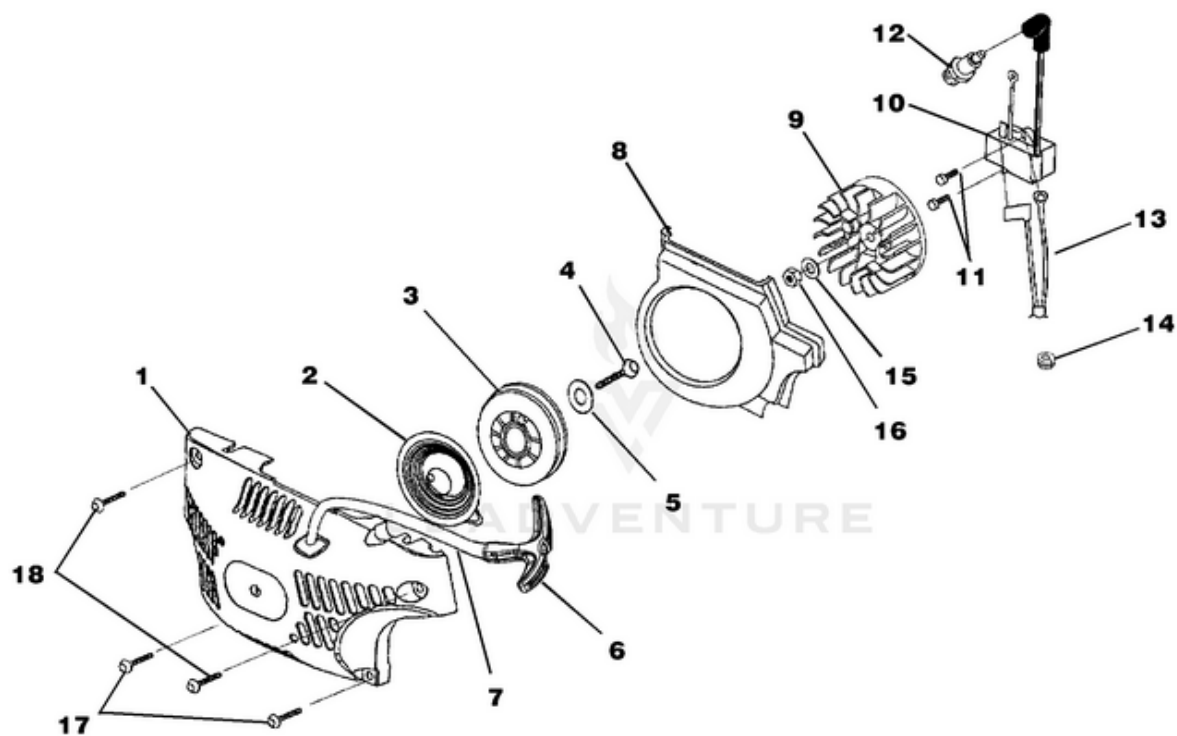
| Ref # | Part # | Description | Qty |
|-------|---------|---|-----|
| 1 | UP06602 | Oil Pump Kit | 1 |
| 2 | UP04185 | Grommet, Oil Outlet | 1 |
| 3 | UP04188 | Left Hand Worm | 1 |
| 4 | UP04048 | Tube, Oil Intake | 1 |
| 4A | UP04054 | Oil Filter | 1 |
| 5 | UP03696 | Short Block | 1 |
| | UP03853 | Short Block | 1 |
| | UP04168 | Short Block | 1 |
| 6 | A08666 | Cylinder Kit | 1 |
| | A08667 | Cylinder Kit | 1 |
| | UP00129 | Cylinder Kit | 1 |
| | UP04183 | Gasket, Muffler | 1 |
| | UP04184 | Gasket, Heat Dam | 1 |
| | UP04094 | Gasket, Carburetor | 1 |
| 7 | UP06971 | Piston & Pin | 1 |
| 8 | UP04177 | Piston Ring | 1 |
| 9 | UP04051 | Ring, Retaining | 2 |
| 7 | UP06972 | Piston & Pin | 1 |
| 8 | UP04190 | Piston Ring | 1 |
| 9 | UP04051 | Ring, Retaining | 2 |
| 7 | UP00130 | Piston & Pin | 1 |
| 8 | UP04231 | Piston Ring | 1 |
| 9 | UP04051 | Ring, Retaining | 2 |
| 10 | UP04083 | Screw, Cap-Socket Hd. (10-24 x 2") | 4 |
| 11 | UP03898 | Screw, Pan Hd., Plastite (8-16 x 5/8") | 2 |
| 12 | UP03587 | Crankshaft & Rod Assy | 1 |
| | UP00131 | Crankshaft & Rod Assy | 1 |
| 13 | UP04174 | Bearing, Needle | 1 |
| 14 | UP04047 | Shaft Seal | 2 |
| 15 | UP04176 | Bearing & Rubber Case | 2 |
| 16 | UP04046 | Rubber Case | 2 |
| 17 | UP04093 | Spark Plug | 1 |
| 18 | UP03874 | Woodruff Key | 1 |
| 19 | UP04087 | Washer | 4 |
| 20 | UP04172 | Lower Crankcase | 1 |
| | UP04232 | Lower Crankcase | 1 |

B2720 Chain Saw UT-10939 10939-UT B2720 Chain Saw UT-10939 B2720 Chain Saw - Handles



Rendered by LeadVenture, Inc.

| Ref # | Part # | Description | Qty |
|--------------|---------------|-------------------------------------|------------|
| 1 | UP06977 | Rear Handle Kit | 1 |
| 2 | UP04234 | Screw-Pan Hd. (12-14 x 1 1/2") | 1 |
| 3 | UP04218 | Throttle Cable | 1 |
| 4 | UP04195 | Trigger, Throttle | 1 |
| 5 | UP04196 | Throttle Lock Out | 1 |
| 6 | A08683 | Handle Cover Kit | 1 |
| 7 | UP04199 | Throttle Lock Pin | 1 |
| 8 | UP04226 | Spring, Compression | 1 |
| 9 | UP04050 | Ring, Retainer | 1 |
| 10 | UP03900 | Screw, Thread Form (10-14 x 3/4") | 2 |
| 11 | UP04238 | Screw, Thread Form (10-14 x 1 3/8") | 1 |
| 12 | UP06973 | Front Handle Kit | 1 |
| | UP04234 | Screw-Pan Hd. (12-14 x 1 1/2") | 1 |
| 13 | A08677 | Isolator Kit | 1 |
| 14 | UP04237 | Screw, Truss Hd. (10-14 x 5/8") | 3 |
| 15 | UP04233 | Screw, Truss Hd. (10-24 x 5/8") | 1 |
| 16 | UP04200 | Limiter, Isolator | 1 |
| 17 | UP03897 | Screw, Thread Form (10-14 x 1/2") | 3 |



Rendered by LeadVenture, Inc.

| Ref # | Part # | Description | Qty |
|--------------|---------------|-----------------------------------|------------|
| 1 | A08679A | Starter Kit | 1 |
| 2 | UP04092 | Spring & Container | 1 |
| 3 | UP05460 | Pulley, Starter | 1 |
| 4 | UP04237 | Screw, Thread Form (10-14 x 5/8") | 1 |
| 5 | UP04089 | Washer, Retaining | 1 |
| 6 | UP04216 | Grip, Starter | 1 |
| 7 | UP03911 | Rope, Starter 46" | 1 |
| 8 | UP04192 | Baffle, Fan Housing | 1 |
| 9 | UP04242 | Rotor & Starter Pawl | 1 |
| 10 | A08676A | Ignition Kit | 1 |
| | UP05851 | Ignition Kit | 1 |
| 11 | UP04086 | Screw, Thread Form (8-32 x 5/8") | 2 |
| 12 | UP04093 | Spark Plug | 1 |
| 13 | UP04222 | Ignition Switch Harness | 1 |
| 14 | UP04215 | Grommet, Wire Harness (Split) | 1 |
| 15 | UP04241 | Washer, Flat | 1 |
| 16 | UP04081 | Nut, Jam | 1 |
| 17 | UP04236 | Screw, Truss Hd. (10-14 x 7/8") | 2 |
| 18 | UP04237 | Screw, Truss Hd. (10-14 x 5/8") | 2 |

No
Diagram
Available

LEADVENTURE
Parts List
Only

| Ref # | Part # | Description | Qty |
|--------------|---------------|--|------------|
| | PT12371MD | Guide Bar (Power Tip) 12" (3/8" pitch) | |
| | H1N7245AH | Chain 12" (3/8" pitch) | |
| | PT14371MD | Guide Bar (Power Tip) 14" (3/8" pitch) | |
| | H1N7252AH | Chain 12" (3/8" pitch) | |
| | PT16371MD | Guide Bar (Power Tip) 16" (3/8" pitch) | |
| | H1N7256AH | Chain 12" (3/8" pitch) | |
| | PT18371MD | Guide Bar (Power Tip) 18" (3/8" pitch) | |
| | H1N7262AH | Chain 12" (3/8" pitch) | |
| | PL13321MA | Guide Bar (Power Tip) 13" (.325 pitch) | |
| | D1L7256AH | Guide Bar (Power Tip) 13" (.325 pitch) | |
| | D1L7356AH | Guide Bar (Power Tip) 13" (.325 pitch) | |
| | PL15321MA | Guide Bar (Power Tip) 15" (.325 pitch) | |
| | D1L7264AH | Guide Bar (Power Tip) 15" (.325 pitch) | |
| | D1L7364AH | Guide Bar (Power Tip) 15" (.325 pitch) | |
| | PT16321MA | Guide Bar (Power Tip) 16" (.325 pitch) | |
| | D1L7266AH | Guide Bar (Power Tip) 16" (.325 pitch) | |
| | D1L7366AH | Guide Bar (Power Tip) 16" (.325 pitch) | |
| | PT18321MA | Guide Bar (Power Tip) 18" (.325 pitch) | |
| | D1L7272AH | Guide Bar (Power Tip) 18" (.325 pitch) | |
| | D1L7372AH | Guide Bar (Power Tip) 18" (.325 pitch) | |
| | PT20321MA | Guide Bar (Power Tip) 20" (.325 pitch) | |
| | D1L7278AH | Guide Bar (Power Tip) 20" (.325 pitch) | |
| | D1L7378AH | Guide Bar (Power Tip) 20" (.325 pitch) | |
| | PS24823 | Sealant Silicon | |
| | UP06561 | Rubber tubing (10') | |
| | 09207 | Wrench - Combination | |
| | 18416 | Digital Tachometer | |
| | 18453 | Grease, Multi-purpose | |
| | 94194 | Compression Tester | |
| | UP07160 | Bit, Torx T27 | |
| | UP04562 | Carry Case | |
| | UP06732 | Bumper Spike Kit | |