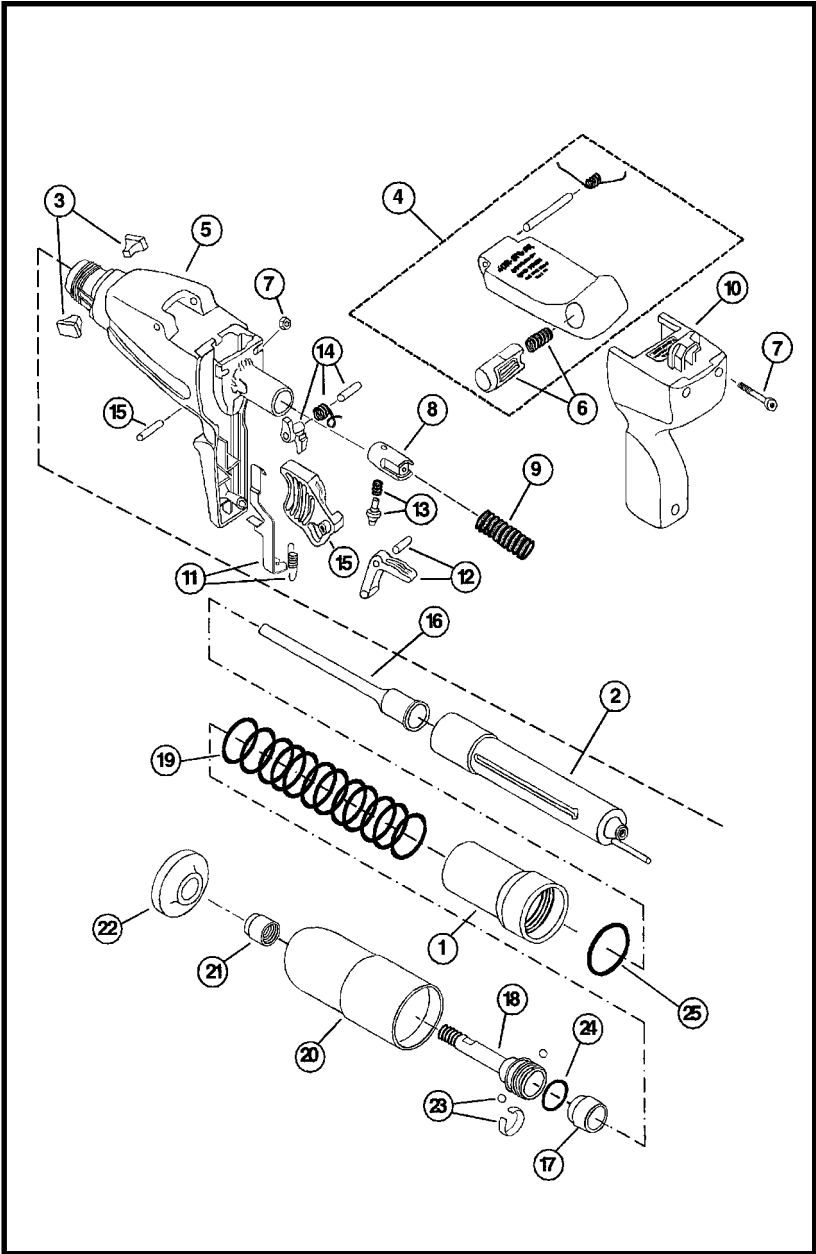


PARTS SCHEMATIC



PARTS SCHEMATIC

PARTS LISTING / MAINTENANCE

AUTOFAST TOOL PARTS LIST

KEY	PART NO.	DESCRIPTION
1	335100A	RETAINING SLEEVE ASSEMBLY
2	335200A	BARREL ASSEMBLY
3	316540	PAWL (2)
4	13510	COVER ASSEMBLY
5	323370	RECEIVER ASSEMBLY
6	308490	LATCH BUTTON ASSEMBLY
7	308860	REAR HANDLE SCREWS & NUTS
8	307890	FIRING PIN ASSEMBLY
9	13513	FIRING PIN SPRING
10	309280	REAR HANDLE ASSEMBLY
11	13518	INDEXING LEVER & SPRING
12	316580	SEAR ASSEMBLY & PIN
13	316570	FIRING PIN PAWL & SPRING
14	13516	TRIGGER LOCK ASSEMBLY
15	13509	TRIGGER & PIN
16	30645M	PISTON
17	316520	BUFFER (3)
18	323300MA	MUZZLE BUSHING ASSEMBLY
19	335175	RETURN SPRING
20	335125A	OUTSIDE SLEEVE ASSEMBLY
21	320000	RETAINING NUT
22	53104	SPALL GUARD
23	323050A	RETENTION CLIP & BALLS (2)
24	351000	O-RING, MUZZLE BUSHING
25	351001	O-RING, RETAINING SLEEVE

MAINTENANCE

**IMPROPERLY MAINTAINED TOOLS CAN CAUSE SERIOUS INJURIES TO
TOOL OPERATORS AND BYSTANDERS**
CLEAN TOOL DAILY

Always make sure the tool is not loaded before performing any service or repair and always wear safety goggles when cleaning or servicing the tool.

NORMAL CLEANING

All front end parts shown in the disassembly section are to be cleaned daily with a good detergent oil and wire brush. Remove all dirt and carbon buildup and wipe parts dry with a clean rag. Check all parts for wear or damage before reassembly and replace or repair any worn or damaged parts.

COMPLETE CLEANING / GENERAL MAINTENANCE

Heavy use or constant exposure to dirt and debris may require that the tool be cleaned more extensively. Complete disassembly and cleaning of all parts may be necessary to restore the tool to normal operation. General maintenance should be performed every six months or more often if the tool is subjected to heavy use. Contact your authorized Ramset Distributor for assistance.

ALWAYS FUNCTION TEST THE TOOL AFTER PERFORMING ANY SERVICE.
SEE PAGE 9 FOR DETAILS ON THE FUNCTION TEST.

PARTS LISTING / MAINTENANCE