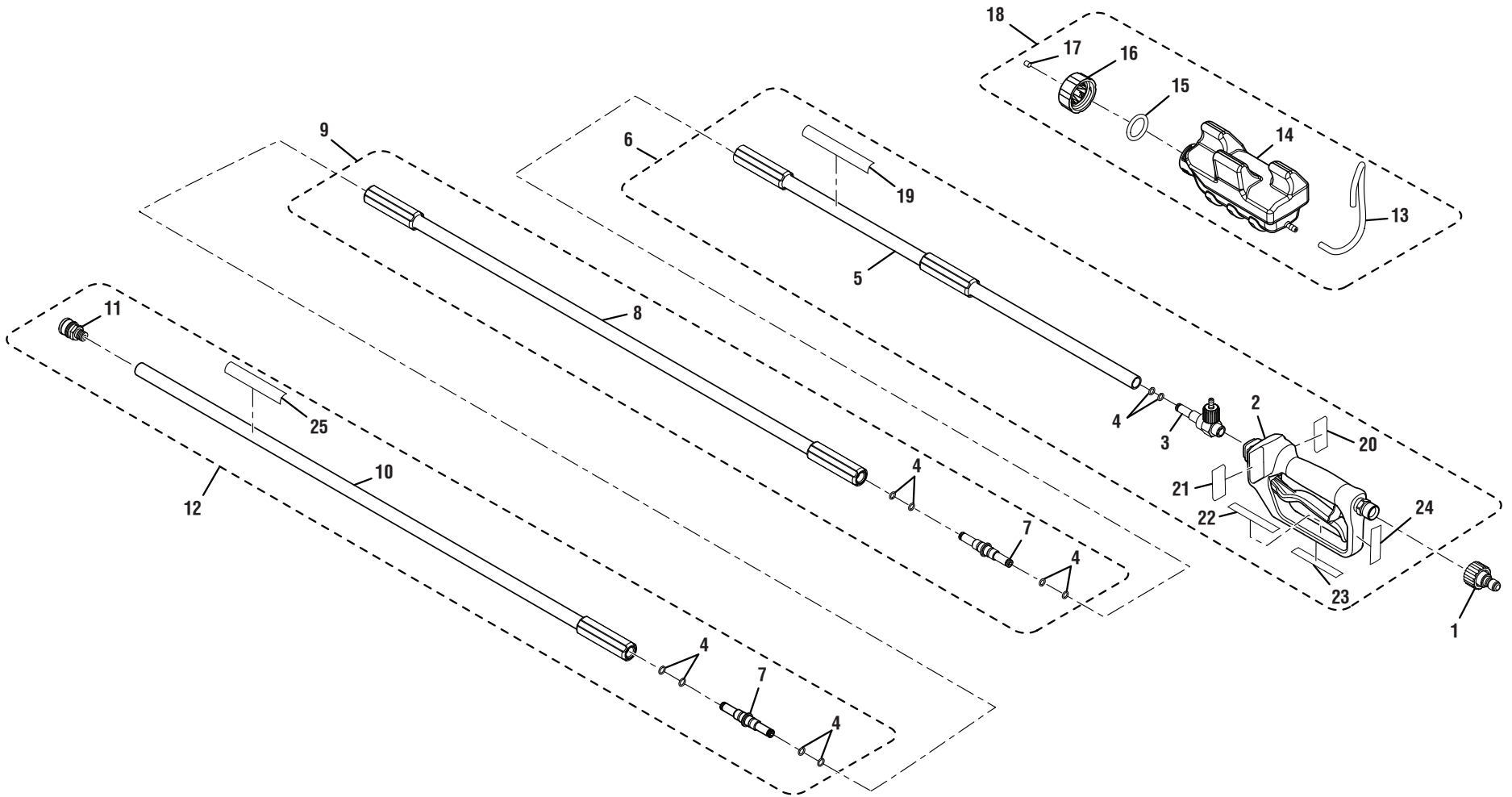


# POWERCARE EXTENSION POLE – MODEL NO. AP31050D

The model number will be found on a label attached to the housing. Always mention the model number in all correspondence regarding your **EXTENSION POLE** or when ordering replacement parts.



**POWERCARE EXTENSION POLE – MODEL NO. AP31050D**

The model number will be found on a label attached to the housing. Always mention the model number in all correspondence regarding your **EXTENSION POLE** or when ordering replacement parts.

**PARTS LIST**

<b>KEY NO.</b>	<b>PART NUMBER</b>	<b>DESCRIPTION</b>	<b>QTY</b>	<b>KEY NO.</b>	<b>PART NUMBER</b>	<b>DESCRIPTION</b>	<b>QTY</b>
1	308078004	Inlet Coupler .....	1	15	570612002	Soap Cap O-Ring .....	1
2	308083005	Spray Wand Handle.....	1	16	518793002	Soap Cap.....	1
3	308951006	Detergent Metering Valve .....	1	17	900777001	Filter.....	1
4	570611003	O-Ring .....	12	18	310658004	Detergent Container Assembly (Inc. Key Nos. 13-17).....	1
5	678777004	Extension Wand w/ Rubber Grip.....	1	19	940654104	Icon Strip .....	1
6	308494038	Handle Assembly (Incl. Key Nos. 2-5 and 19-24).....	1	20	940705123	Logo Label.....	1
7	678236006	Adaptor.....	2	21	940324025	Warning Label (English) .....	1
8	678777002	Extension Wand (Middle).....	1	22	940324018	Warning Label (French).....	1
9	308494034	Extension Wand (Middle) Assembly (Incl. Key Nos. 4 and 7-8).....	1	23	940489003	Data Label .....	1
10	678777003	Extension Wand (Upper).....	1	24	940324026	Warning Label (Spanish).....	1
11	308637004	Quick Connect Coupler .....	1	25	940734073	“Spray Wand Not Included” Label .....	1
12	308494035	Extension Wand (Upper) Assembly (Inc. Key Nos. 4, 7, 10-11 and 25).....	1	<b>Not Shown:</b>			
13	561399005	Hose .....	1	988000869	Operator’s Manual		
14	518792004	Detergent Container .....	1	12-15-11 (REV:01)			