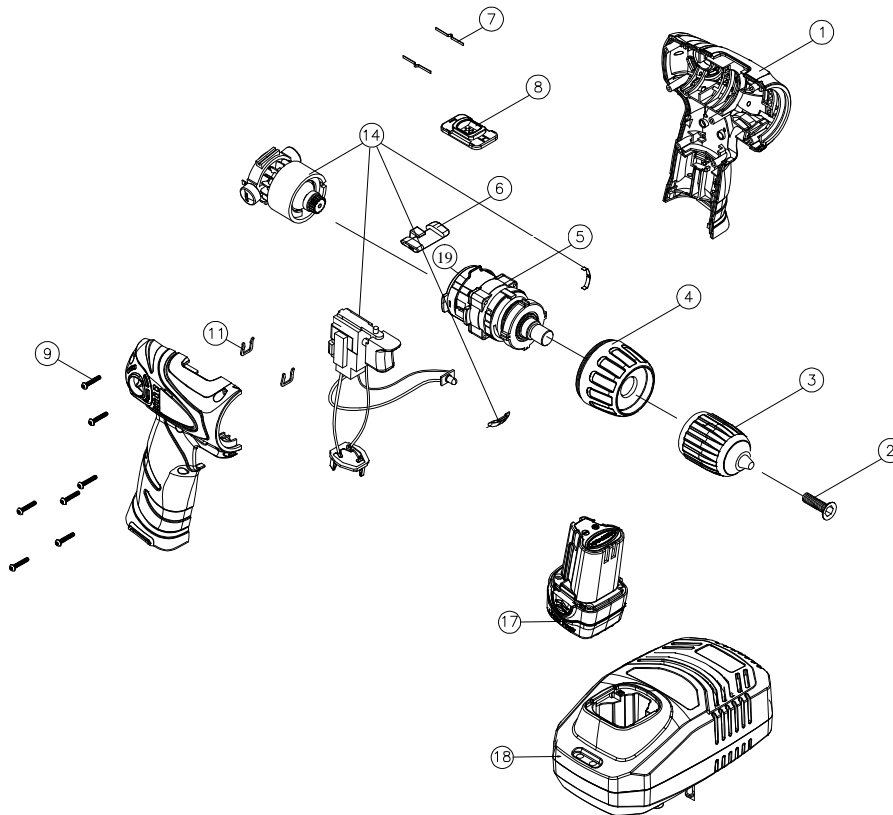


ALi 10,8 G



Pos.	FLEX - No.	Description
1	392.553	Handle, 2 halves
2	340.901	Screw KT3x16
3	340.928	Chuck
4	340.936	Adjustment ring
5	340.944	Gearbox, assembled
6	392.561	Slider for direction of rotation
7	340.952	Spring
8	340.960	Speed switch
9	337.471	Screw
11	337.358	Clamp
14	392.545	Motor unit and switch
17	336.319	Battery
18	336.327	Charger
19	343.838	Switch bar