



# SERVICE PARTS LIST

**BULLETIN NO.**  
**54-02-0555**

SPECIFY CATALOG NO. AND SERIAL NO. WHEN ORDERING PARTS			REVISED BULLETIN	DATE
<b>5 TON CHAIN HOISTS</b>				July 2010
<b>CATALOG NOS.</b> 9680-20 and 9681-20	<b>STARTING SERIAL NO.</b>	<b>ND-B</b>	<b>WIRING INSTRUCTION</b> N/A	

00  
0

**EXAMPLE:**  
Component Parts  
(Small #) Are Included  
When Ordering The  
Assembly (Large #).

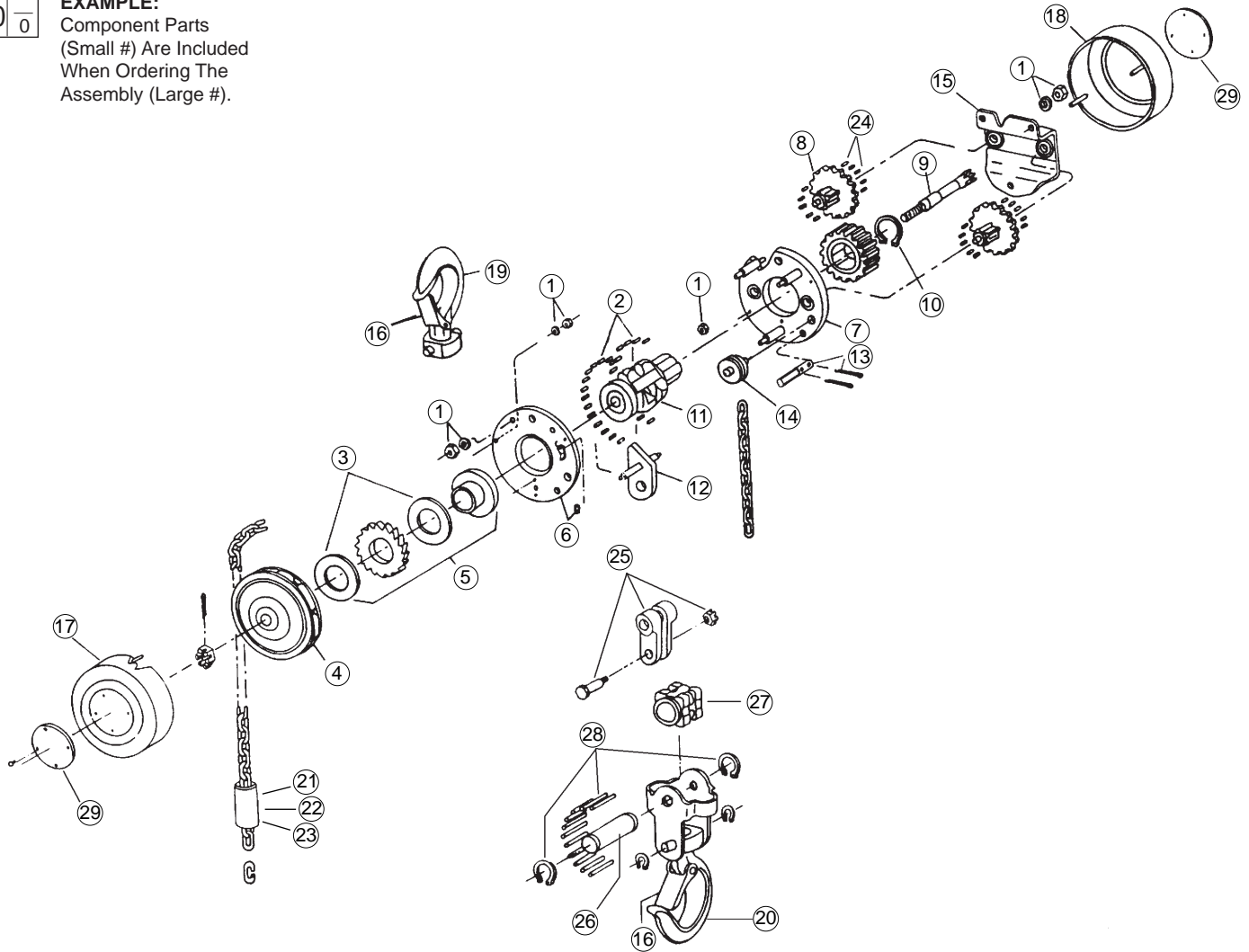


FIG.	PART NO.	DESCRIPTION OF PART	QTY	FIG.	PART NO.	DESCRIPTION OF PART	QTY
1	14-47-0880	Main Hardware Kit	(1)	15	14-47-0895	Gear Cage w/Bushing	(1)
2	14-47-0890	Liftwheel Roller Kit	(1)	16	14-47-0960	Latch Kit (5 Ton)	(2)
3	45-88-8848	Washer-Friction	(2)	17	42-92-1270	Handwheel Cover w/Studs	(1)
4	45-94-0430	Handwheel	(1)	18	42-92-1275	Gear Cover w/Studs	(1)
5	14-47-0965	Brake Set	(1)	19	14-36-0275	Upper Hook Kit (5 Ton)	(1)
6	44-66-6193	Handwheel Side Plate (3 and 5 Ton)	(1)	20	14-36-0270	Lower Hook Kit (5 Ton)	(1)
7	44-66-6194	Geared Side Plate (3 and 5 Ton)	(1)	21	10-15-1520	Warning Tube (English)	(1)
8	32-60-2665	Gear Set (2, 3 and 5 Ton)	(1)	22	10-15-1525	Warning Tube (Spanish)	(1)
9	36-66-9686	Pinion Shaft	(1)	23	10-15-1530	Warning Tube (French)	(1)
10	14-47-0885	Pinion & Liftwheel Hardware Kit	(1)	24	44-96-0185	Gear Set Roller Kit	(1)
11	45-11-0220	Liftwheel (2, 3 and 5 Ton)	(1)	25	14-47-0910	Dead End Block	(1)
12	44-77-0120	Stripper (2, 3 and 5 Ton)	(1)	26	36-66-9687	Shaft Sheave	(1)
13	44-60-1610	Loose End Pin Kit	(1)	27	45-11-0210	Wheel Sheave	(1)
14	43-56-0580	Chain Guide Roller	(1)	28	14-47-0915	Shaft Hardware Kit	(1)
				29	12-20-9680	Service Nameplate Kit (5 Ton)	(1)