



SERVICE PARTS LIST

BULLETIN NO.
54-02-0255

SPECIFY CATALOG NO. AND SERIAL NO. WHEN ORDERING PARTS		REVISED BULLETIN	DATE
1 TON CHAIN HOISTS			July 2010
CATALOG NOS. 9670-20, 9671-20, 9672-20 and 9673-20	STARTING SERIAL NO. ND-B	WIRING INSTRUCTION N/A	

00 0

EXAMPLE:
Component Parts
(Small #) Are Included
When Ordering The
Assembly (Large #).

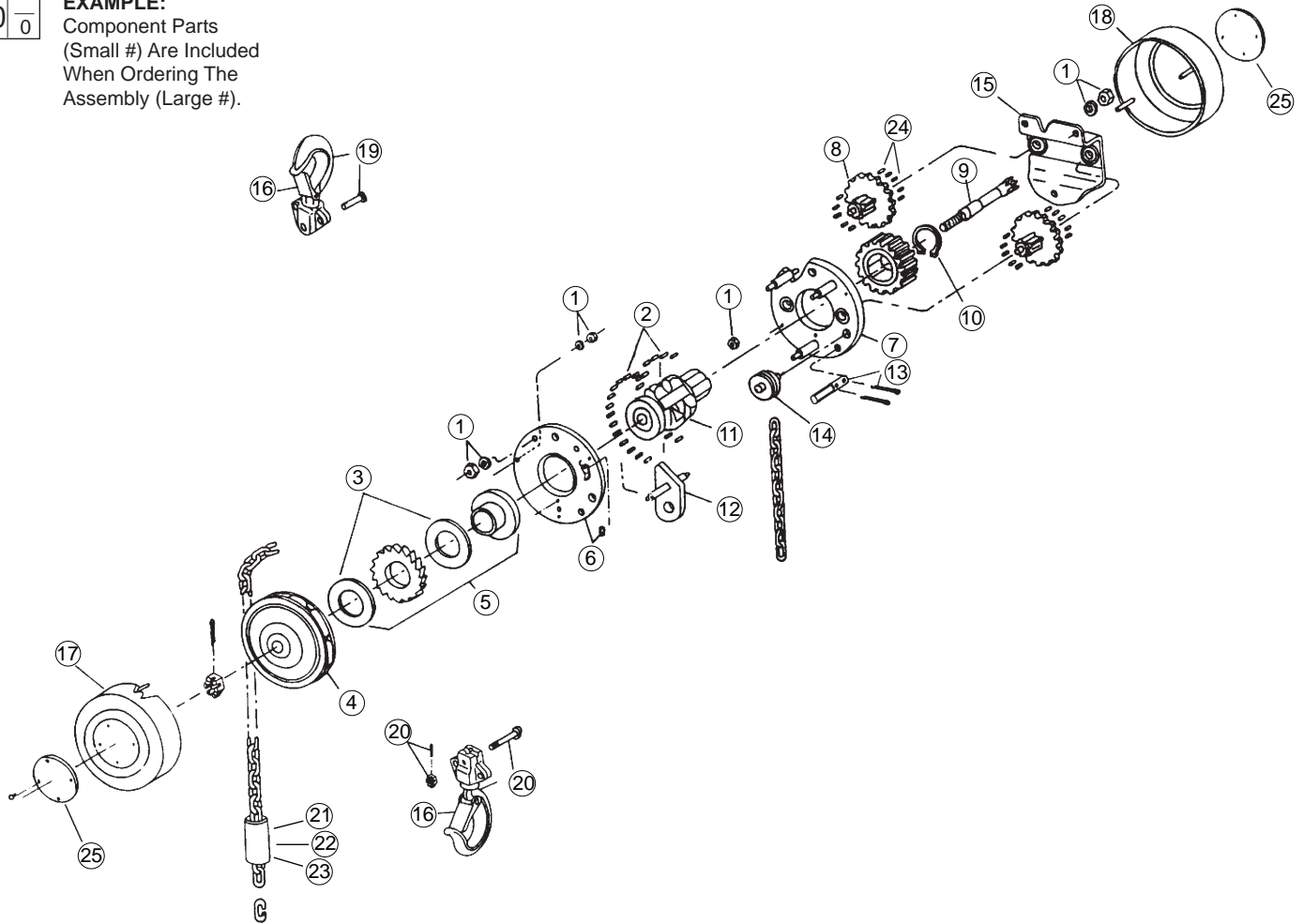


FIG.	PART NO.	DESCRIPTION OF PART	QTY	FIG.	PART NO.	DESCRIPTION OF PART	QTY
1	14-47-0860	Main Hardware Kit	(1)	13	44-60-1605	Loose End Pin Kit (1 Ton)	(1)
2	14-47-0870	Liftwheel Roller Kit	(1)	14	43-56-0575	Chain Guide Roller	(1)
3	45-88-8847	Washer-Friction	(2)	15	14-47-0875	Gear Cage w/Bushing	(1)
4	45-94-0425	Handwheel (1 Ton)	(1)	16	14-47-0945	Latch Kit (1 Ton)	(2)
5	14-47-0855	Brake Set	(1)	17	42-92-1260	Handwheel Cover w/Studs	(1)
6	44-66-6187	Handwheel Side Plate (1 Ton)	(1)	18	42-92-1265	Gear Cover w/Studs	(1)
7	44-66-6188	Geared Side Plate (1 Ton)	(1)	19	14-36-0250	Upper Hook Kit (1 Ton)	(1)
8	32-60-2660	Gear Set (1 Ton)	(1)	20	14-36-0255	Lower Hook Kit (1 Ton)	(1)
9	36-66-9685	Pinion Shaft (1 Ton)	(1)	21	10-15-1520	Warning Tube (English)	(1)
10	14-47-0865	Pinion & Liftwheel Hardware Kit	(1)	22	10-15-1525	Warning Tube (Spanish)	(1)
11	45-11-0205	Liftwheel w/Bearing Races	(1)	23	10-15-1530	Warning Tube (French)	(1)
12	44-77-0115	Stripper (1 Ton)	(1)	24	44-96-0180	Gear Set Roller Kit (1 Ton)	(1)
				25	12-20-9670	Service Nameplate Kit (1 Ton)	(1)