



SERVICE PARTS LIST

BULLETIN NO.
54-02-1240

SPECIFY CATALOG NO. AND SERIAL NO. WHEN ORDERING PARTS		REVISED BULLETIN	DATE
3 TON TROLLEY			Sept.'87
CATALOG NO. 9660	DATE CODE 486	WIRING INSTRUCTION	

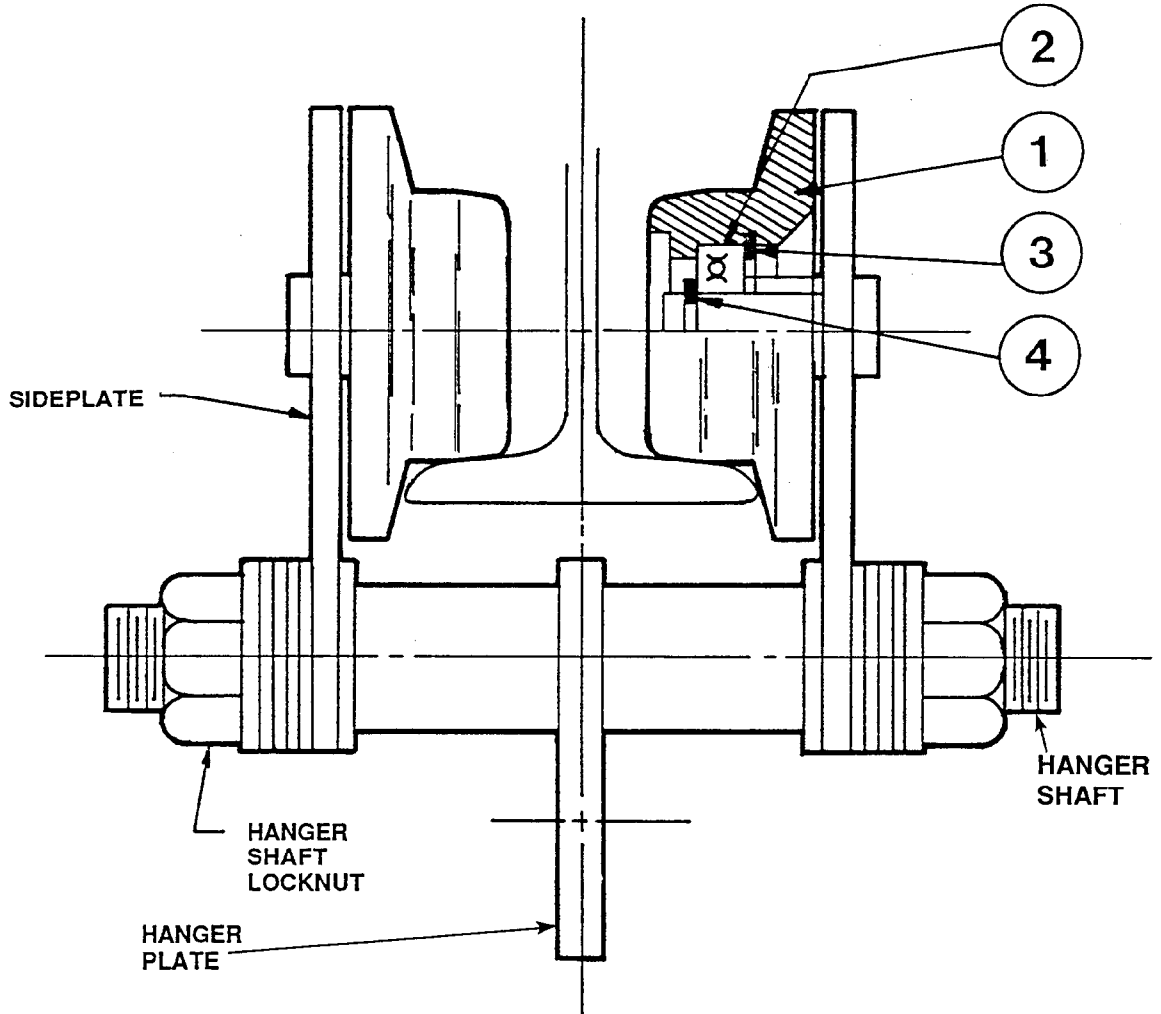


FIG	PART NO.	DESCRIPTION OF PART	QTY.
1	45-94-0275	Wheel	(4)
2	02-04-2750	Ball Bearing	(4)
3	34-80-3900	Retaining Ring	(4)
4	34-60-2080	Retaining Ring	(4)