



# SERVICE PARTS LIST

**BULLETIN NO.**  
54-02-1230

SPECIFY CATALOG NO. AND SERIAL NO. WHEN ORDERING PARTS		REVISED BULLETIN	DATE Sept.'87
2 TON TROLLEY		WIRING INSTRUCTION	
CATALOG NO. 9640	DATE CODE 486		

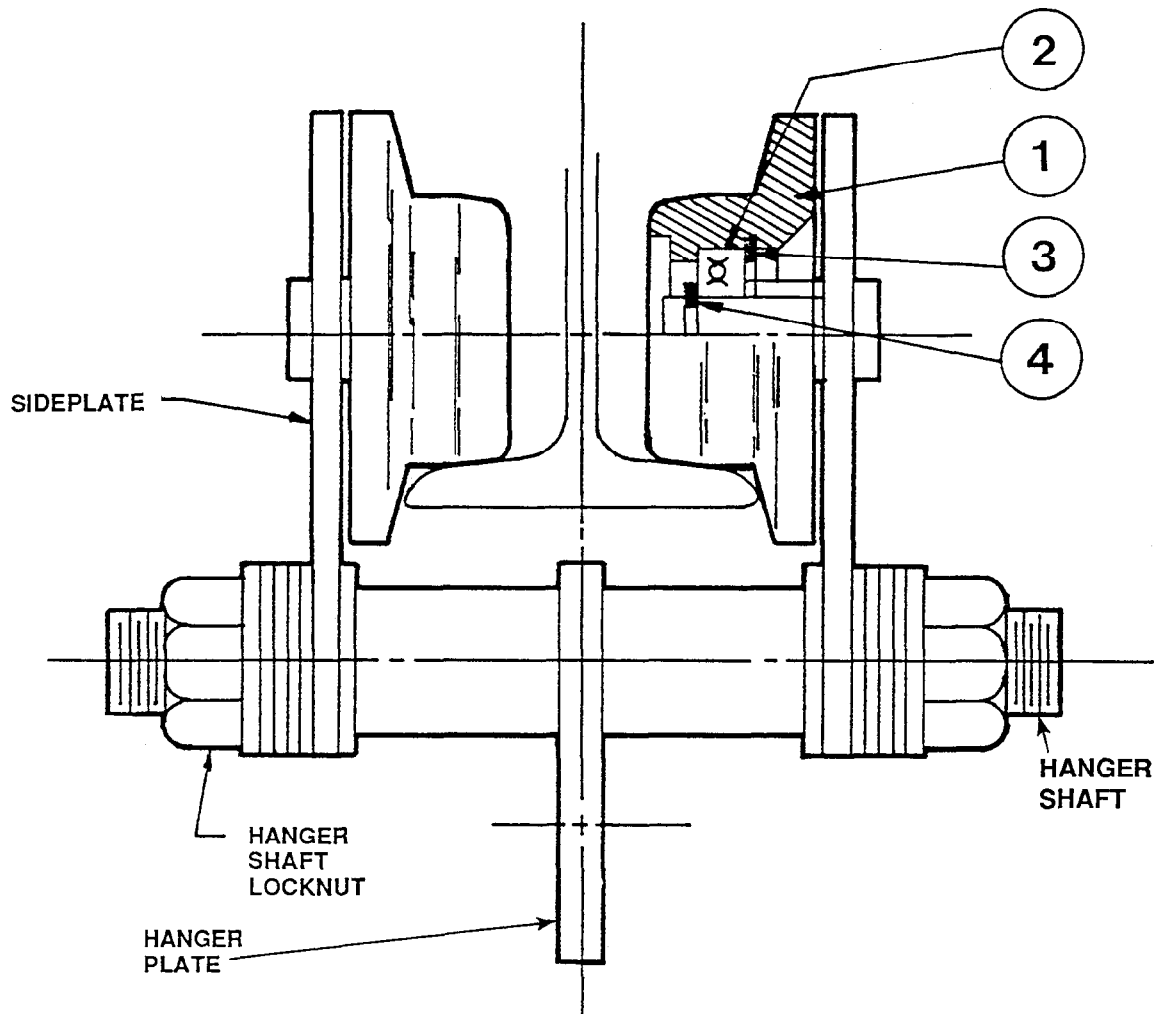


FIG.	PART NO.	DESCRIPTION OF PART	QTY.
1	45-94-0270	Wheel	(4)
2	02-04-2600	Ball Bearing	(4)
3	34-80-3600	Retaining Ring	(4)
4	34-60-1875	Retaining Ring	(4)