



SERVICE PARTS LIST

BULLETIN NO.
54-02-1211

SPECIFY CATALOG NO. AND SERIAL NO. WHEN ORDERING PARTS		REVISED BULLETIN	DATE
1/2 TON TROLLEY			Dec. '96
CATALOG NO.	9611	DATE CODE	197
WIRING INSTRUCTION			

00
0

EXAMPLE:
Component Parts (Small #) Are Included
When Ordering The Assembly (Large #).

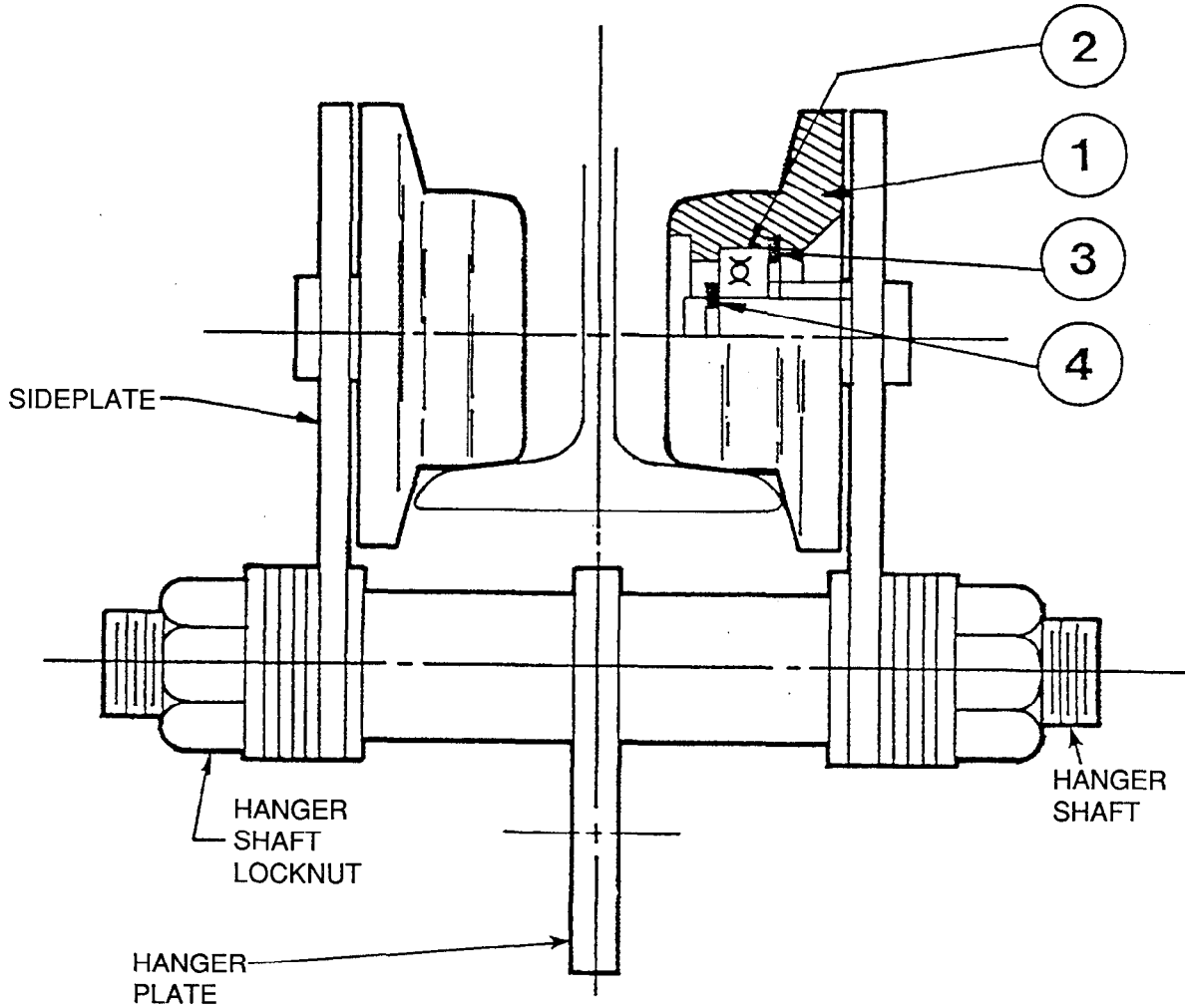


FIG.	PART NO.	DESCRIPTION OF PART	NO. REQ.
1	45-94-0260	Wheel	(4)
2	02-04-1535	Ball Bearing	(4)
3	34-80-2400	Retaining Ring	(4)
4	34-60-1200	Retaining Ring	(4)

MILWAUKEE ELECTRIC TOOL CORPORATION
13135 W. LISBON RD., BROOKFIELD, WI 53005

Drwg. 1