



SERVICE PARTS LIST

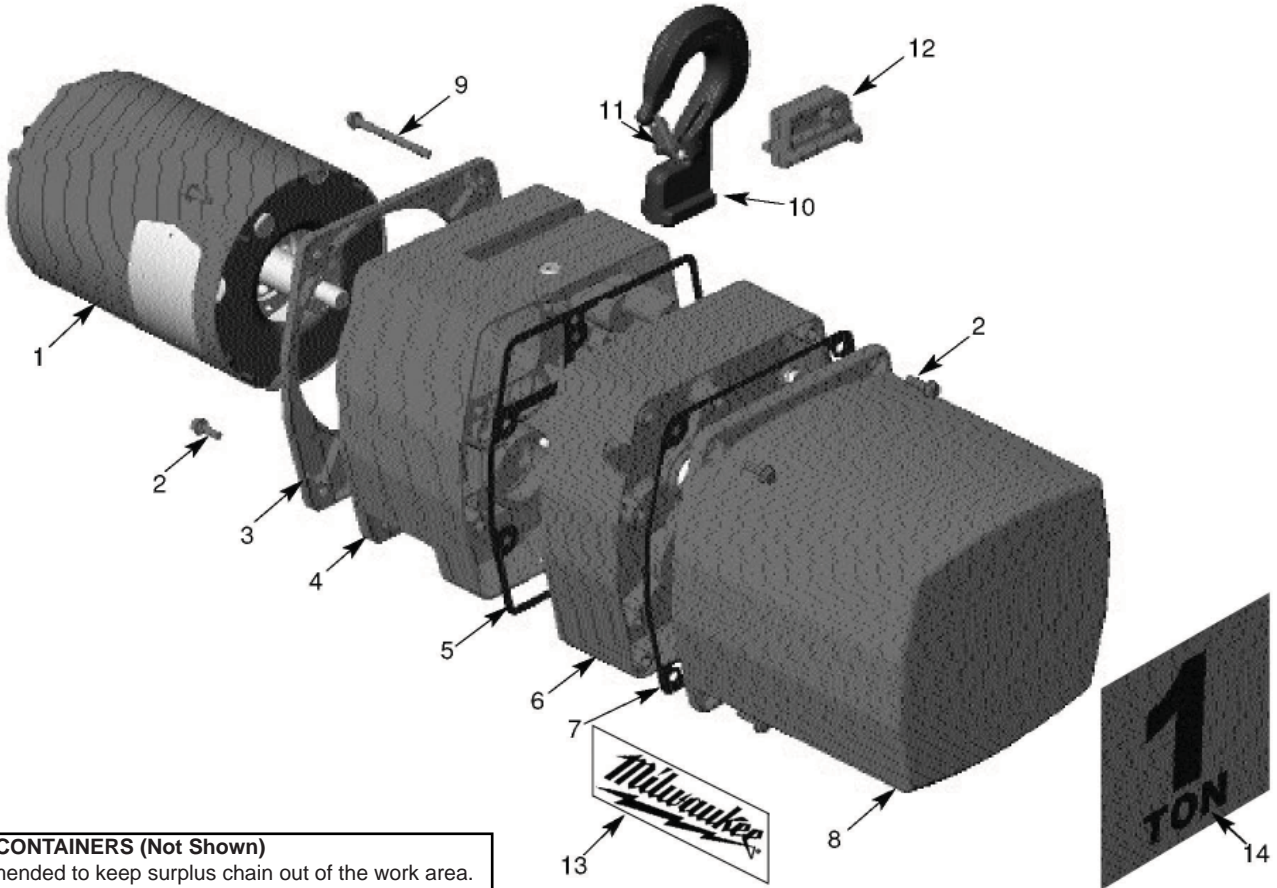
BULLETIN NO.
54-02-1203

SPECIFY CATALOG NO. AND SERIAL NO. WHEN ORDERING PARTS		REVISED BULLETIN	DATE
ELECTRIC CHAIN HOISTS			Mar. 2008
CAT. NOS.	9560, 9561, 9562, 9565, 9566, 9567, 9568, 9570, 9571, 9572, 9573	SERIAL PREFIX	MJLC
		WIRING INSTRUCTION SEE BACK PAGE	

EXAMPLE:



Component Parts (Small #)
Are Included When Ordering
The Assembly (Large #).



CHAIN CONTAINERS (Not Shown)	
Recommended to keep surplus chain out of the work area.	
42-51-0116	For Electric Chain Hoist No. 9560 thru 9562.
42-51-0117	For Electric Chain Hoist No. 9565 thru 9568.
42-51-0118	For Electric Chain Hoist No. 9570 thru 9573.

FIG.	PART NO.	DESCRIPTION OF PART	QTY.
FOR CATALOG NOS. 9560, 9561 & 9562			
1	23-30-0515	1/2 HP 115/230V 60 HZ MOTOR	1
3	42-92-1345	TRIM COVER	1
14	10-37-0045	CAPACITY LABEL	1
FOR CATALOG NOS. 9565, 9567 & 9568			
1	23-30-0520	1 HP 115/230V 60 HZ MOTOR	1
3	42-92-1345	TRIM COVER	1
14	10-37-0055	CAPACITY LABEL	1
FOR CATALOG NO. 9566			
1	23-30-0525	1 HP 230/460V 3 PHASE MOTOR	1
3	42-92-1345	TRIM COVER	1
14	10-37-0055	CAPACITY LABEL	1
FOR CATALOG NOS. 9570, 9572 & 9573			
1	23-30-0520	1 HP 115/230V 60 HZ MOTOR	1
3	42-92-1345	TRIM COVER	1
14	10-37-0065	CAPACITY LABEL	1
FOR CATALOG NO. 9571			
1	23-30-0525	1 HP 230/460V 3 PHASE MOTOR	1
3	42-92-1345	TRIM COVER	1
14	10-37-0065	CAPACITY LABEL	1

FIG.	PART NO.	DESCRIPTION OF PART	QTY.
2	06-95-0095	COVER SCREW	7
4	43-76-0495	TRANSMISSION HOUSING	1
5	43-44-0825	TRANSMISSION CASE GASKET	1
6	42-92-0675	TRANSMISSION COVER	1
7	43-44-0835	ELECTRICAL COVER GASKET	1
8	22-68-0235	ELECTRICAL COVER	1
9	06-95-5715	HOOK RETAINER SCREW	1
10	14-36-0145	TOP HOOK ASSEMBLY	1
10A	14-36-0155	SWIVEL HOOK (ACCESSORY)	1
11	14-47-0145	LATCH KIT ASSEMBLY	1
12	44-86-0670	HOOK RETAINER	1
13	10-37-0070	TOOL LABEL	2

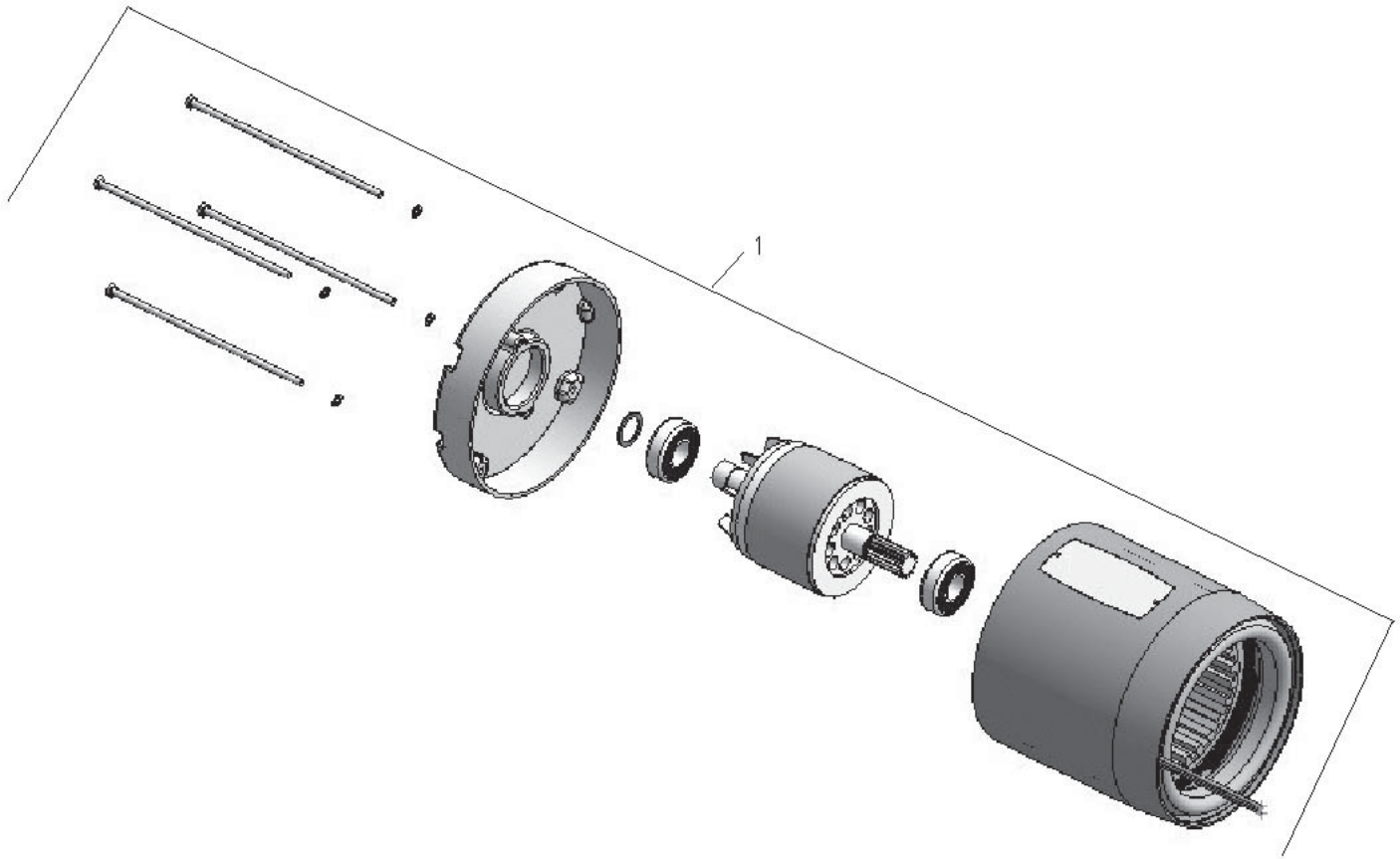


FIG. PART NO. DESCRIPTION OF PART QTY.

FOR CATALOG NOS. 9560, 9561 & 9562

1 23-30-0515 1/2 HP 115/230V 60 HZ MOTOR 1

FOR CATALOG NOS. 9565, 9567, 9568, 9570, 9572 & 9573

1 23-30-0520 1 HP 115/230V 60 HZ MOTOR 1

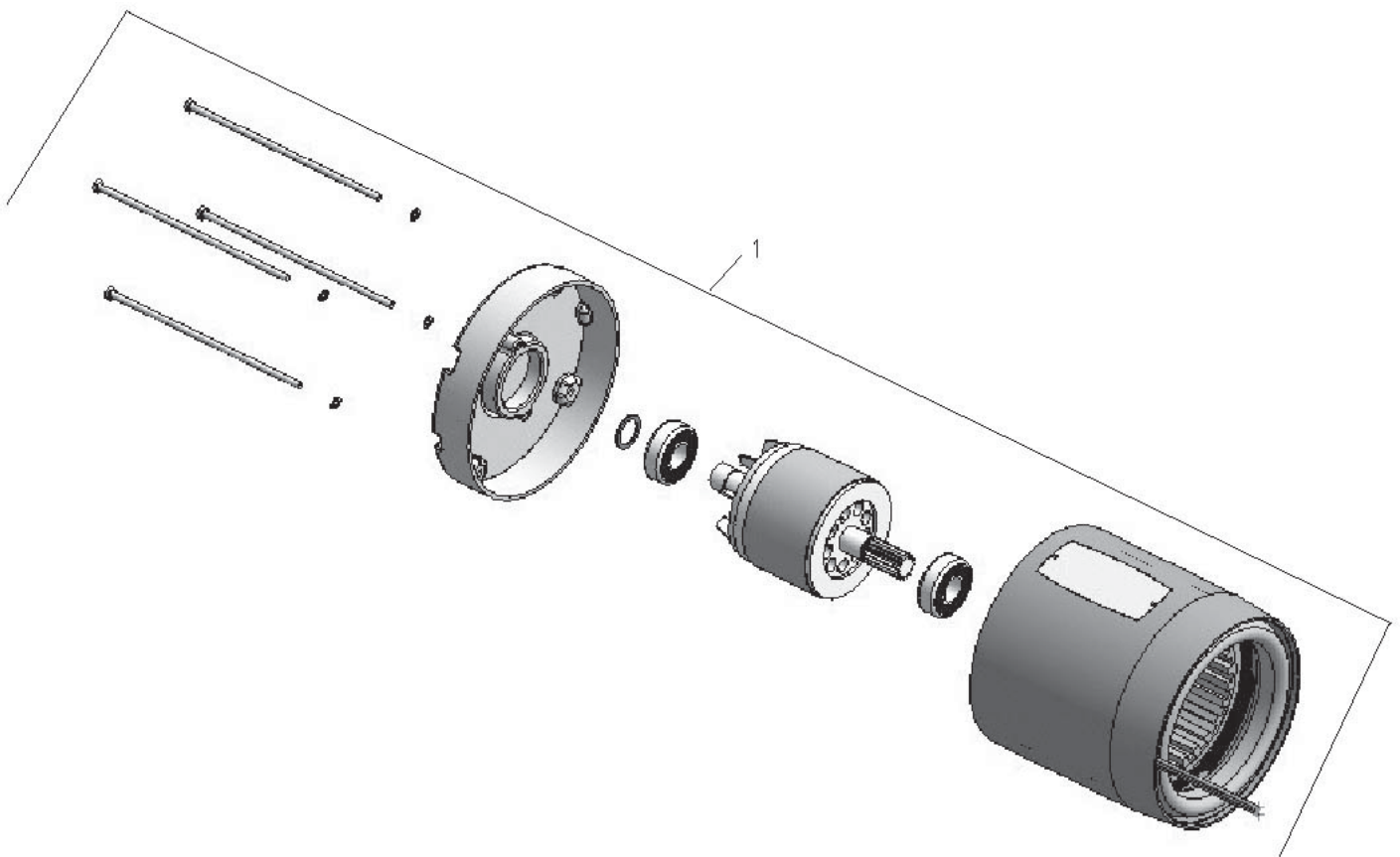


FIG.	PART NO.	DESCRIPTION OF PART	QTY.
<u>FOR CATALOG NOS. 9566 & 9571</u>			
1	23-30-0525	1 HP 230/460V, 3 PHASE MOTOR	1

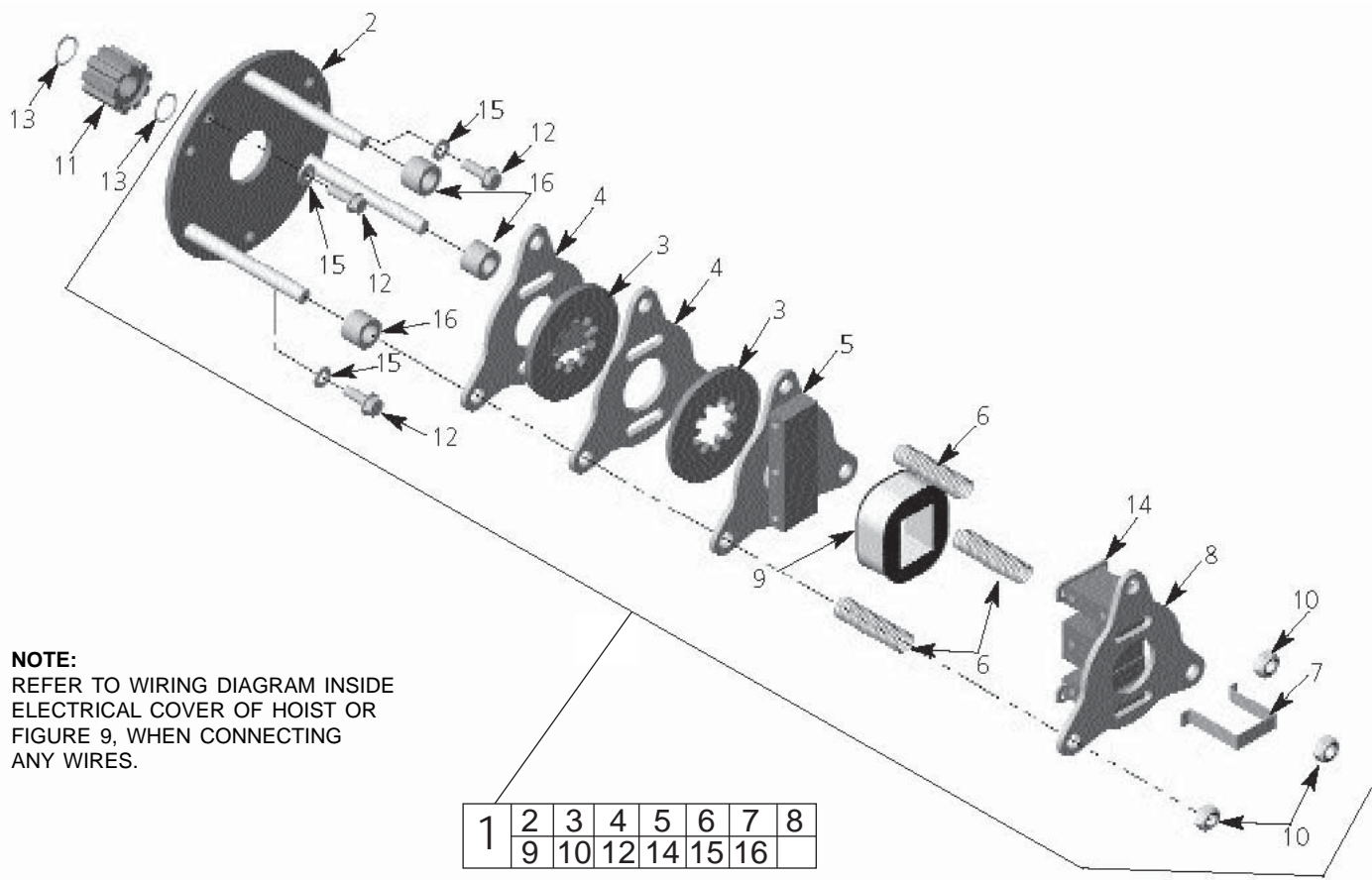


FIG.	PART NO.	DESCRIPTION OF PART	QTY.
2	14-67-0235	PLATE & STUD ASSEMBLY	1
4	44-66-5660	BRAKE PLATE	2
5	14-67-0240	PLATE & ARMATURE ASSEMBLY	1
6	40-50-8110	SPRING	3
7	44-86-0500	RETAINER	1
8	14-67-0250	PLATE & FRAME ASSEMBLY	1
10	06-57-3978	LOCKNUT	1
11	42-04-3575	BRAKE ADAPTER	1
12	06-95-0095	SCREW	3
13	34-60-1400	RETAINING RING	2
14	22-51-0230	SHADING COIL	2
15	06-97-2600	1/4" INT-TOOTH LOCKWASHER	3
	42-56-7812	COIL ADHESIVE (NOT SHOWN)	1

FOR CATALOG NOS. 9560, 9561 & 9562

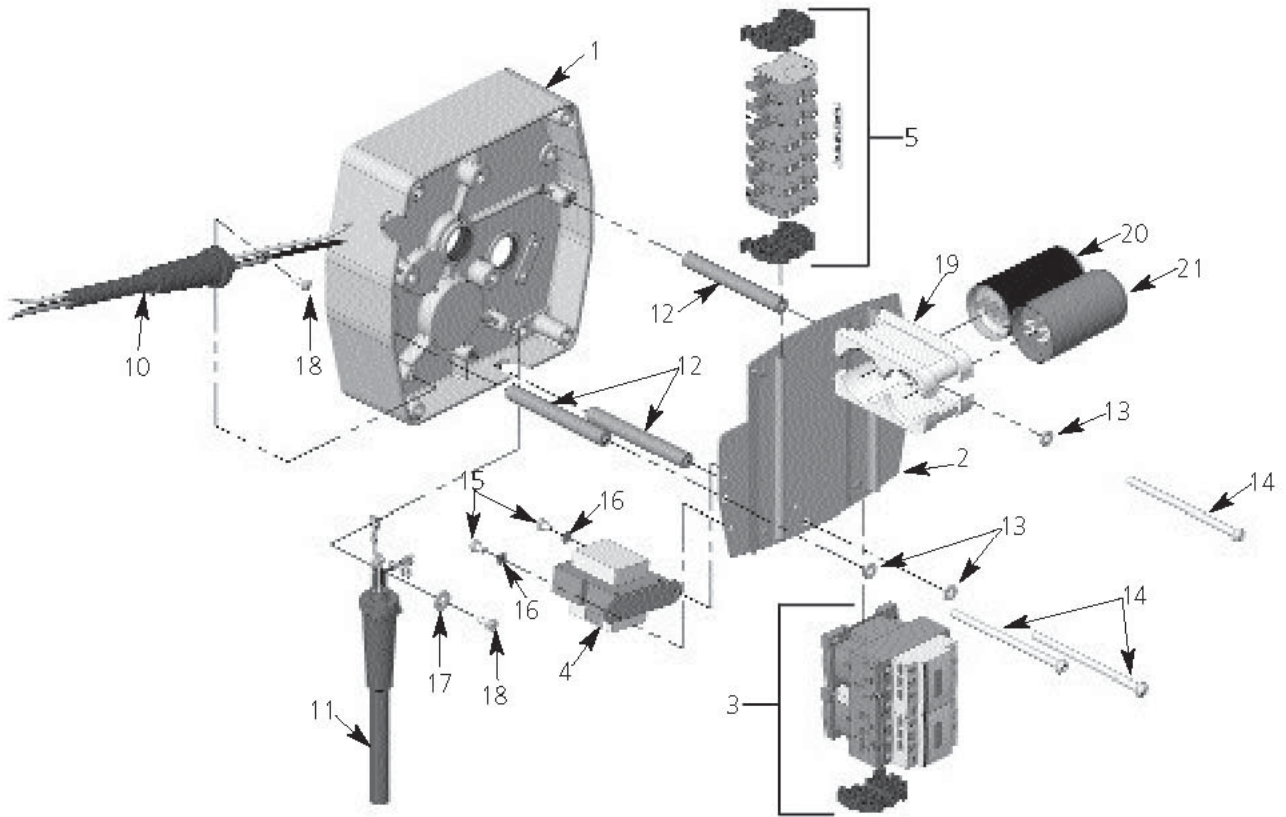
FIG.	PART NO.	DESCRIPTION OF PART	QTY.
1	14-04-0065	DISC BRAKE 1/2 HP	1
3	43-06-0580	BRAKE DISC 1/2 HP	2
9	22-51-0240	BRAKE COIL, 115V	1
16	45-36-1360	SPACER 1/2 HP	3

FOR CATALOG NOS. 9565, 9567, 9568, 9570, 9572, & 9573

FIG.	PART NO.	DESCRIPTION OF PART	QTY.
1	14-04-0075	DISC BRAKE 1 HP	1
3	43-06-0580	BRAKE DISC 1 HP	3
9	22-51-0240	BRAKE COIL, 115V	1

FOR CATALOG NOS. 9566 & 9571

FIG.	PART NO.	DESCRIPTION OF PART	QTY.
1	14-04-0085	DISC BRAKE 1 HP, 230V	1
3	43-06-0580	BRAKE DISC 1 HP	3
9	22-51-0250	BRAKE COIL, 230V	1



FOR CATALOG NOS. 9560, 9561 & 9562

FIG.	PART NO.	DESCRIPTION OF PART	QTY.
1	42-92-0675	TRANSMISSION COVER	1
2	44-66-1015	PANEL PLATE	1
11A	22-64-2250	CONTROL CABLE ASSEMBLY, 6 FT	1
11B	22-64-2255	CONTROL CABLE ASSEMBLY, 11 FT	1
11C	22-64-2260	CONTROL CABLE ASSEMBLY, 16 FT	1
12	45-36-1630	PANEL STANDOFF	3
13	06-97-2600	1/4" INT-TOOTH LOCKWASHER	3
14	06-81-5020	1/4-20UNC X 4" SCREW	3
15	06-81-4564	8-32UNC X 5/16" SCREW	2
16	06-97-4158	#8 EXT-TOOTH LOCKWASHER	2
17	45-88-5220	1/4" FLATWASHER	1
18	06-95-0338	10-24UNC X 1/2" SCREW	2
19	42-36-1930	CAN MOUNTING BRACKET	2
20	23-66-2525	SINPAC STARTING SWITCH	1
21	22-33-0570	CAPACITOR	1

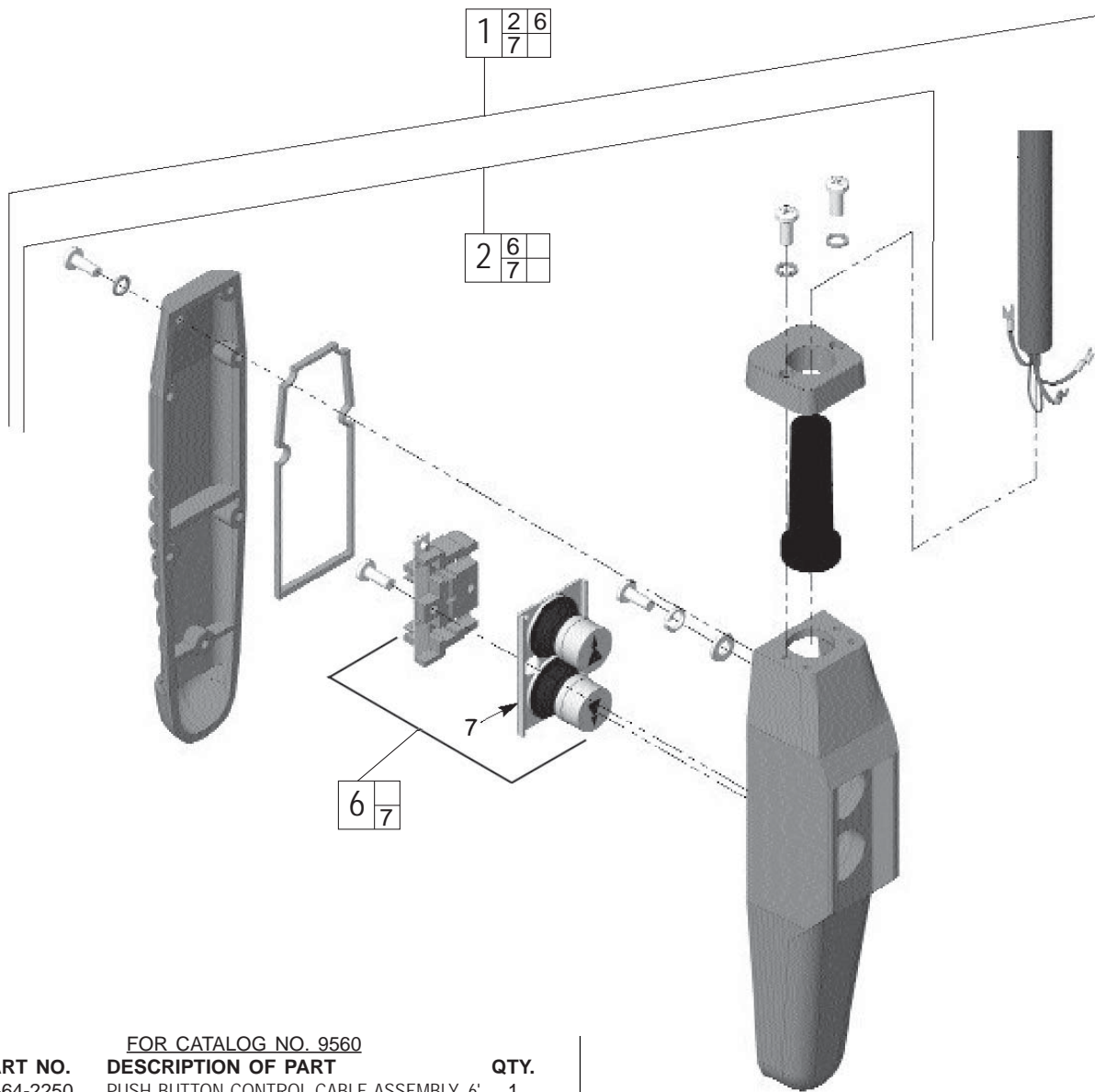
FIG.	PART NO.	DESCRIPTION OF PART	QTY.
3	22-06-0050	REVERSING CONTACTOR KIT, 1/2 HP	1
4	23-81-0510	TRANSFORMER 115V:24V	1
5	22-56-0930	TERMINAL BLOCK KIT 115V / 230V	1
10	22-64-1280	POWER CORD 1/2 HP	1

FOR CATALOG NOS. 9565, 9567, 9568, 9570, 9572, & 9573

FIG.	PART NO.	DESCRIPTION OF PART	QTY.
3B	22-06-0060	REVERSING CONTACTOR KIT, 1HP,1PH	1
4	23-81-0510	TRANSFORMER 115V:24V	1
5	22-56-0930	TERMINAL BLOCK KIT 115V / 230V	1
10	22-64-1285	POWER CORD 1 HP, 1PH	1

FOR CATALOG NOS. 9566 & 9571

FIG.	PART NO.	DESCRIPTION OF PART	QTY.
3	22-06-0070	REVERSING CONTACTOR KIT, 1HP,3PH	1
4	23-81-0520	TRANSFORMER 230V:24V	1
5	22-56-0935	TERMINAL BLOCK KIT 230V / 460V	1
10	22-64-1290	POWER CORD 1 HP, 3 PH	1



FOR CATALOG NO. 9560

FIG.	PART NO.	DESCRIPTION OF PART	QTY.
1	22-64-2250	PUSH BUTTON CONTROL CABLE ASSEMBLY, 6'	1
2	43-76-0700	PUSH BUTTON STATION ASSEMBLY	1
6	22-58-0260	CONTACT ASSEMBLY	1
7	42-42-0510	BUTTON ASSEMBLY	1

FOR CATALOG NO. 9561

FIG.	PART NO.	DESCRIPTION OF PART	QTY.
1	22-64-2255	PUSH BUTTON CONTROL CABLE ASSEMBLY, 11'	1
2	43-76-0700	PUSH BUTTON STATION ASSEMBLY	1
6	22-58-0260	CONTACT ASSEMBLY	1
7	42-42-0510	BUTTON ASSEMBLY	1

FOR CATALOG NOS. 9562

FIG.	PART NO.	DESCRIPTION OF PART	QTY.
1	22-64-2260	PUSH BUTTON CONTROL CABLE ASSEMBLY, 16'	1
2	43-76-0700	PUSH BUTTON STATION ASSEMBLY	1
6	22-58-0260	CONTACT ASSEMBLY	1
7	42-42-0510	BUTTON ASSEMBLY	1

FOR CATALOG NOS. 9565 & 9566

FIG.	PART NO.	DESCRIPTION OF PART	QTY.
1	22-64-2250	PUSH BUTTON CONTROL CABLE ASSEMBLY, 6'	1
2	43-76-0700	PUSH BUTTON STATION ASSEMBLY	1
6	22-58-0260	CONTACT ASSEMBLY	1
7	42-42-0510	BUTTON ASSEMBLY	1

FOR CATALOG NO. 9567

FIG.	PART NO.	DESCRIPTION OF PART	QTY.
1	22-64-2255	PUSH BUTTON CONTROL CABLE ASSEMBLY, 11'	1
2	43-76-0700	PUSH BUTTON STATION ASSEMBLY	1
6	22-58-0260	CONTACT ASSEMBLY	1
7	42-42-0510	BUTTON ASSEMBLY	1

FOR CATALOG NO. 9568

FIG.	PART NO.	DESCRIPTION OF PART	QTY.
1	22-64-2260	PUSH BUTTON CONTROL CABLE ASSEMBLY, 16'	1
2	43-76-0700	PUSH BUTTON STATION ASSEMBLY	1
6	22-58-0260	CONTACT ASSEMBLY	1
7	42-42-0510	BUTTON ASSEMBLY	1

FOR CATALOG NO. 9570 & 9571

FIG.	PART NO.	DESCRIPTION OF PART	QTY.
1	22-64-2250	PUSH BUTTON CONTROL CABLE ASSEMBLY, 6'	1
2	43-76-0700	PUSH BUTTON STATION ASSEMBLY	1
6	22-58-0260	CONTACT ASSEMBLY	1
7	42-42-0510	BUTTON ASSEMBLY	1

FOR CATALOG NO. 9572

FIG.	PART NO.	DESCRIPTION OF PART	QTY.
1	22-64-2255	PUSH BUTTON CONTROL CABLE ASSEMBLY, 11'	1
2	43-76-0700	PUSH BUTTON STATION ASSEMBLY	1
6	22-58-0260	CONTACT ASSEMBLY	1
7	42-42-0510	BUTTON ASSEMBLY	1

FOR CATALOG NO. 9573

FIG.	PART NO.	DESCRIPTION OF PART	QTY.
1	22-64-2260	PUSH BUTTON CONTROL CABLE ASSEMBLY, 16'	1
2	43-76-0700	PUSH BUTTON STATION ASSEMBLY	1
6	22-58-0260	CONTACT ASSEMBLY	1
7	42-42-0510	BUTTON ASSEMBLY	1

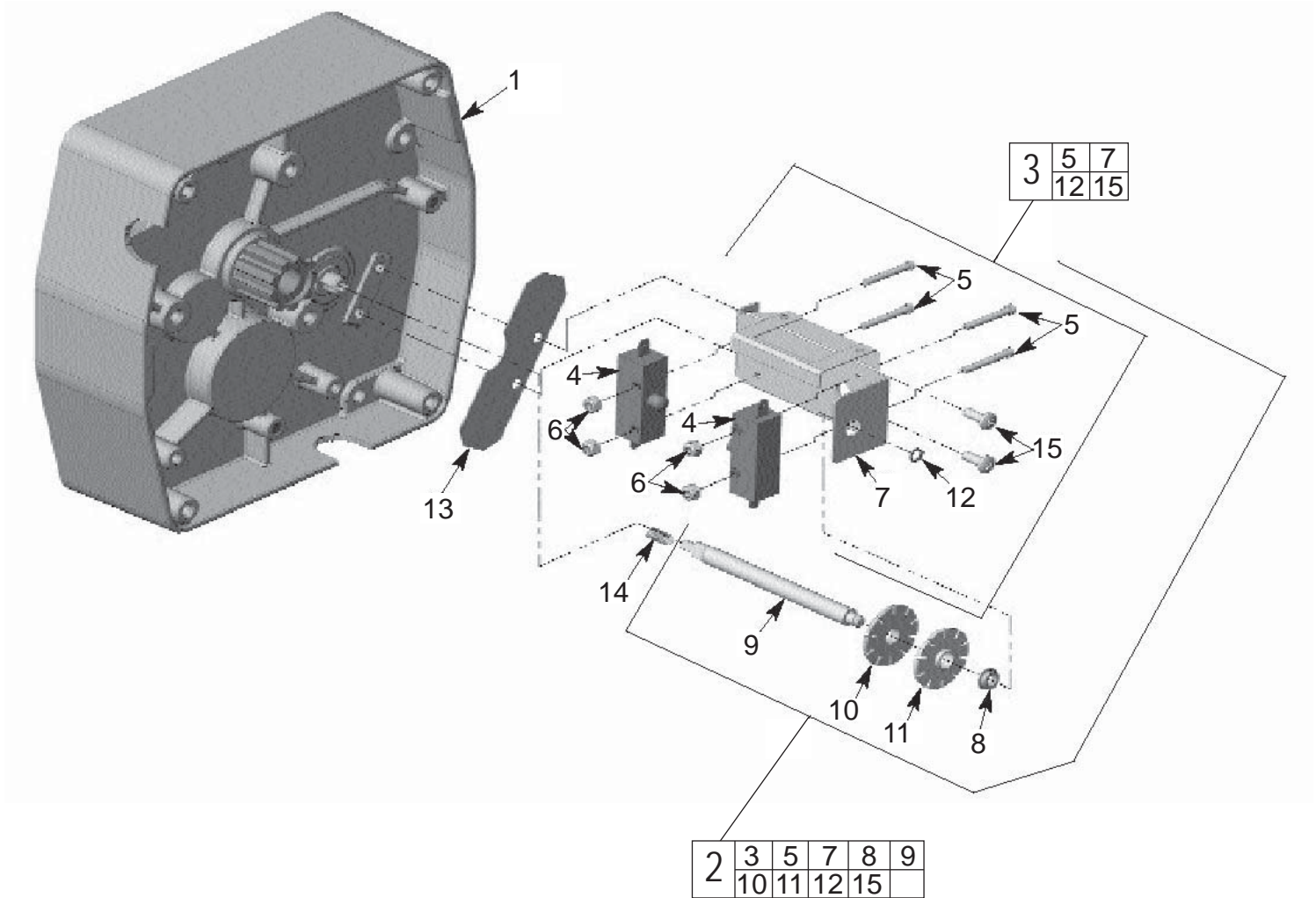
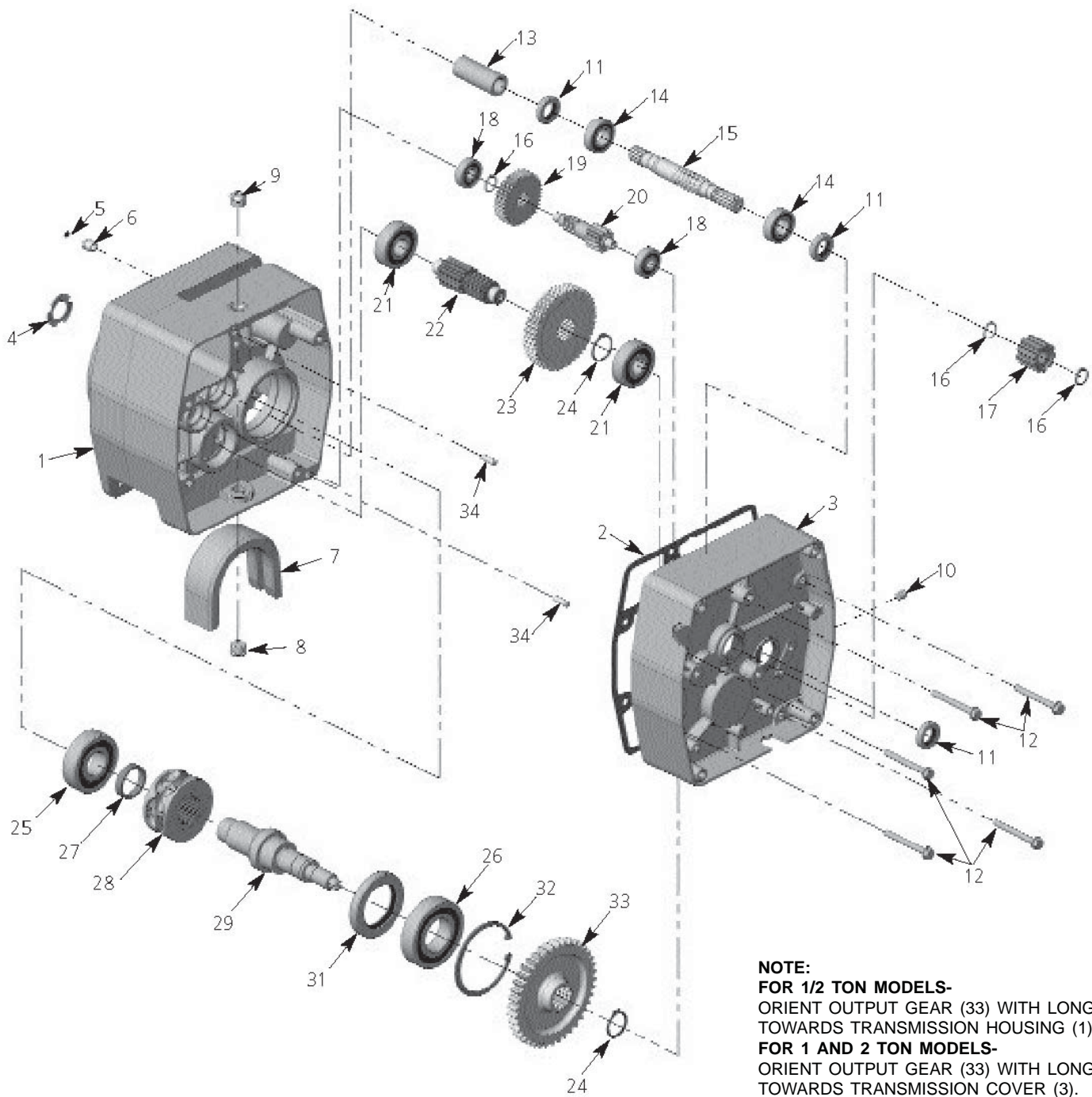


FIG.	PART NO.	DESCRIPTION OF PART	QTY.
1	42-92-0675	TRANSMISSION COVER	1
2	14-73-0210	LIMIT SWITCH ASSEMBLY	1
3	14-78-0340	LIMIT SWITCH BRACKET ASSEMBLY	1
4	23-66-1550	SWITCH	2
5	06-81-0725	6-32UNC X 1" SCREW	4
6	06-57-6059	6-32UNC ELASTIC NUT	4
7	23-66-1555	LIMIT SWITCH BRACKET	1
8	42-40-0910	BUSHING	1
9	45-08-0280	LIMIT SWITCH SHAFT	1
10	44-40-0641	SWITCH NUT (SILVER)	1
11	44-40-0636	SWITCH NUT (GOLD)	1
12	34-60-0510	RETAINING RING	1
13	43-86-0130	INSULATOR	1
14	40-50-8090	SPRING	1
15	06-95-0338	10-24-UNC X 1/2" SCREW	2



NOTE:
FOR 1/2 TON MODELS-
 ORIENT OUTPUT GEAR (33) WITH LONG BOSS TOWARDS TRANSMISSION HOUSING (1).
FOR 1 AND 2 TON MODELS-
 ORIENT OUTPUT GEAR (33) WITH LONG BOSS TOWARDS TRANSMISSION COVER (3).

FIG.	PART NO.	DESCRIPTION OF PART	QTY.
1	43-76-0495	TRANSMISSION HOUSING	1
2	43-44-0825	TRANSMISSION CASE GASKET	1
3	42-92-0675	TRANSMISSION COVER	1
4	40-50-8100	SPRING WASHER	1
5	34-40-4560	O-RING	1
6	43-33-0530	PRESSURE RELIEF FITTING	1
7	43-56-0765	CHAIN GUIDE	1
8	44-68-0610	OIL PLUG-DRAIN	1
9	44-68-0620	OIL PLUG-FILL	1
10	44-68-0630	OIL PLUG-LEVEL	1
11	45-06-0415	OIL SEAL	3
12	06-95-5720	SCREW, HWH SELF-THD	5
13	42-90-0245	MOTOR COUPLING	1
14	02-04-1705	BEARING	2
15	32-60-2320	INPUT SHAFT	1
16	34-60-1400	RETAINING RING	3
17	42-04-3577	BRAKE ADAPTER	1
18	02-04-1030	BEARING	2
19	32-60-2325	HIGH SPEED PINION	1
21	02-04-1770	BEARING	2
22	32-60-2340	OUTPUT PINION	1
24	34-60-2480	RETAINING RING	2
25	02-04-2305	BEARING	1

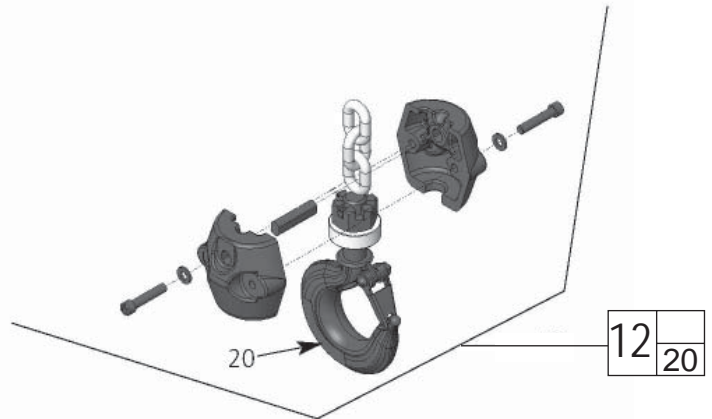
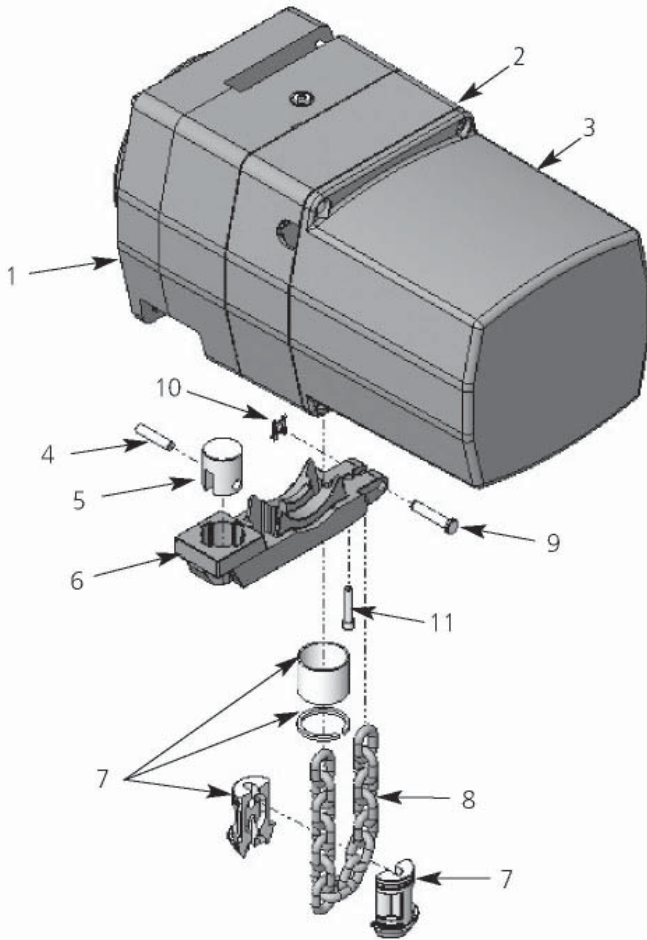
FIG.	PART NO.	DESCRIPTION OF PART	QTY.
26	02-04-2310	BEARING	1
27	45-36-1625	SPACER LOAD SHEAVE	1
28	45-11-0120	LOAD SHEAVE 9/32" CHAIN	1
29	36-50-0020	OUTPUT SHAFT ASSEMBLY	1
31	45-06-0425	OIL SEAL	1
32	34-60-2600	RETAINING RING	1
33	32-60-2315	OUTPUT GEAR	1
34	06-65-3515	DOWEL PIN	2

FOR CATALOG NOS. 9560, 9561 & 9562

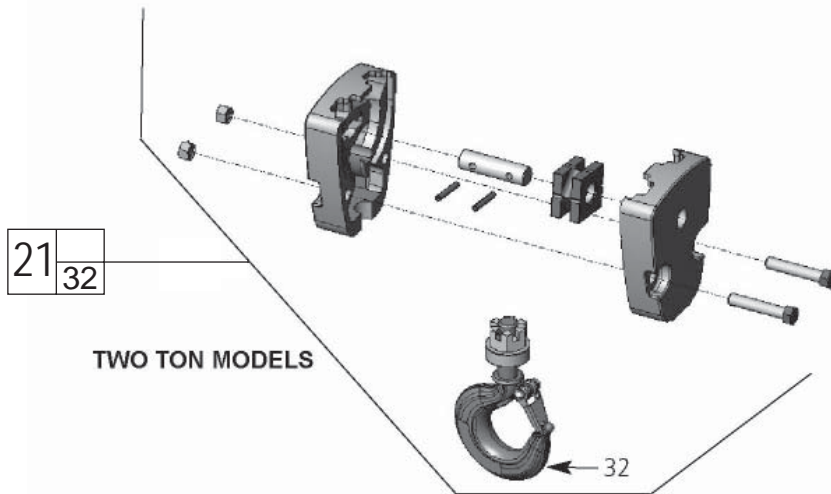
FIG.	PART NO.	DESCRIPTION OF PART	QTY.
20	32-60-2330	INTER. PINION, 1/2 TON	1
23	14-08-0150	OVERLOAD CLUTCH ASSY, 1/2 TON	1

FOR CAT. NOS. 9565, 9566, 9567, 9568, 9570, 9571, 9572 & 9573

FIG.	PART NO.	DESCRIPTION OF PART	QTY.
20	32-60-2335	INTER. PINION, 1 & 2 TON	1
23	14-08-0160	OVERLOAD CLUTCH ASSY, 1 & 2 TON	1

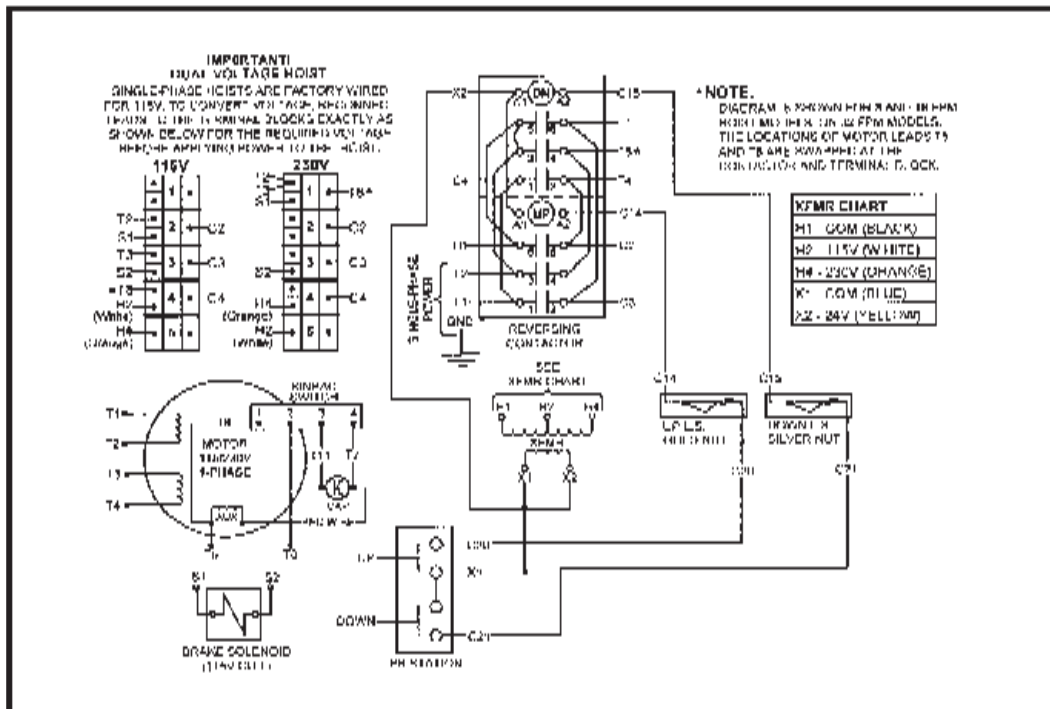


1/2 TON AND 1 TON MODELS

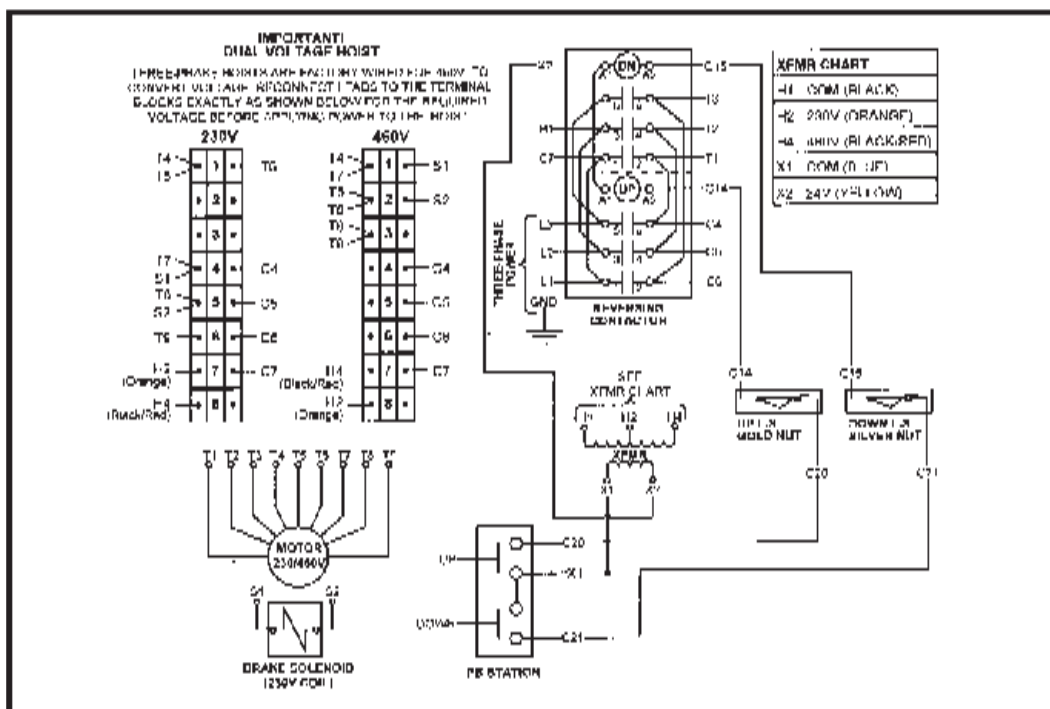


TWO TON MODELS

FIG.	PART NO.	DESCRIPTION OF PART	QTY.
1	43-76-0495	TRANSMISSION HOUSING	1
2	42-92-0675	TRANSMISSION COVER	1
3	22-68-0235	ELECTRICAL COVER	1
4	44-60-1780	ANCHOR PIN (2 TON ONLY)	1
5	44-60-1785	ANCHOR (2 TON ONLY)	1
6	43-56-0770	CHAIN STRIPPER	1
7	14-47-1250	CHAIN STOP KIT	1
9	44-60-1790	ATTACHMENT PIN	1
10	44-86-0675	RETAINING CLIP	1
11	06-81-0090	1/4-20UNC X 1-1/4" SHCS	1
12	42-28-0290	BOTTOM BLOCK ASSY 1/2 & 1 TON	1
20	14-36-0180	BOTTOM HOOK ASSY 1/2 & 1 TON	1
21	14-47-0620	BOTTOM BLOCK ASSY 2 TON	1
32	14-36-0170	BOTTOM HOOK ASSY 2 TON	1



Wiring Diagram for 1-Speed, 1-Phase Models



Wiring Diagram for 1-Speed, 3-Phase Models