



SERVICE PARTS LIST

BULLETIN NO.
54-26-1850

SPECIFY CATALOG NO. AND SERIAL NO. WHEN ORDERING PARTS		REVISED BULLETIN	DATE
14.4 VOLT 3/8" SQUARE IMPACT WRENCH			Oct. 2011
CATALOG NO.	9082-20	STARTING SERIAL NO.	398A
		WIRING INSTRUCTION 58-01-1835	

EXAMPLE:
Component Parts (Small #) Are Included
When Ordering The Assembly (Large #).

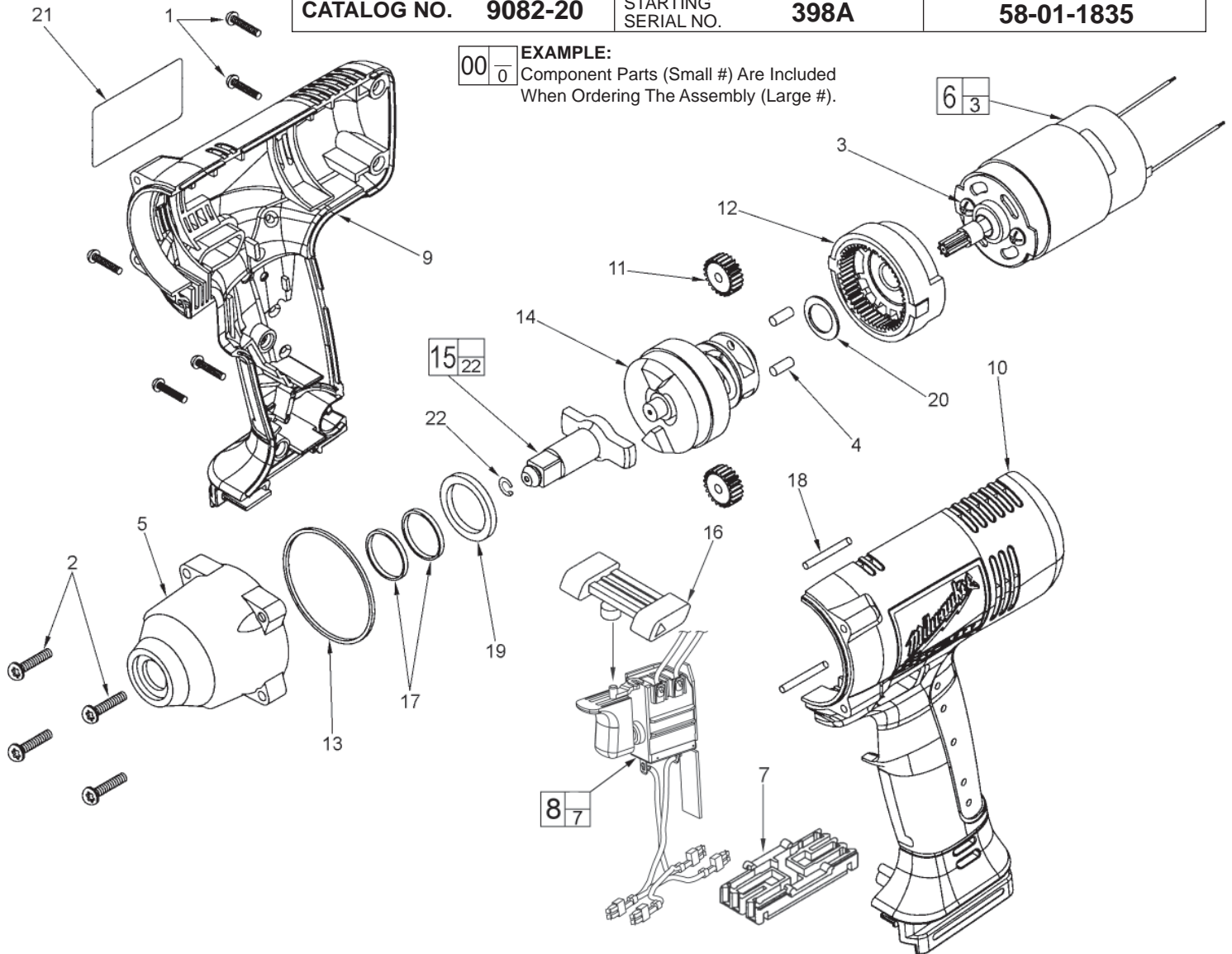


FIG.	PART NO.	DESCRIPTION OF PART	NO.REQ.
1	05-78-0350	3mm x 15mm Self-Tapping Screw	(5)
2	05-78-0900	4mm x 20mm Pan Hd. PT T-20 Scr.	(4)
3	05-81-0409	4mm x 8mm Pan Hd. Machine Screw	(2)
4	06-65-0970	4mm x 10mm Pin	(2)
5	14-30-0575	Gearcase Assembly	(1)
6	14-50-0720	Motor Assembly (Includes item 3)	(1)
7	22-56-0195	Connector Block	(1)
8	23-66-2245	Switch Assembly	(1)
9	31-44-1190	Right Housing	(1)
10	31-44-1195	Left Housing	(1)
11	32-62-0230	Planet Gear	(2)
12	32-65-0100	Ring Gear Assembly	(1)
13	34-40-0960	Rubber Ring	(1)
14	38-50-0930	Middle Shaft Assembly	(1)
15	42-06-0475	Output Shaft Assembly (Incl. item 22)	(1)
16	45-24-0510	Forward/Reverse Lever	(1)
17	45-06-0750	Felt Washer	(2)
18	45-06-0760	0.8mm x 20mm Seal	(2)
19	45-88-0805	Washer	(1)
20	45-88-0955	Washer	(1)
21	12-20-1205	Service Nameplate Kit	(1)
22	34-60-1030	Retaining Ring	(1)

WARNING
SWITCH POLARITY SENSITIVE
If wired incorrectly with connector block #7, switch **will be** damaged and destroyed! Refer to Service Wiring Diagram 58-01-1835.

- FIG. LUBRICATION:**
- 6 Lightly coat the pinion area of the motor assembly with Type "L" grease, No. 49-08-4170.
 - 12 Lightly coat the inside surface of the ring gear assembly with Type "L" grease.
 - 4,11, 14,15,20 Lightly coat the surfaces of the pins, planet gears, middle shaft assembly, output shaft assembly and washer with Type "L" grease.