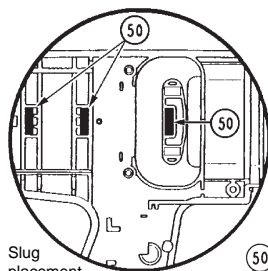




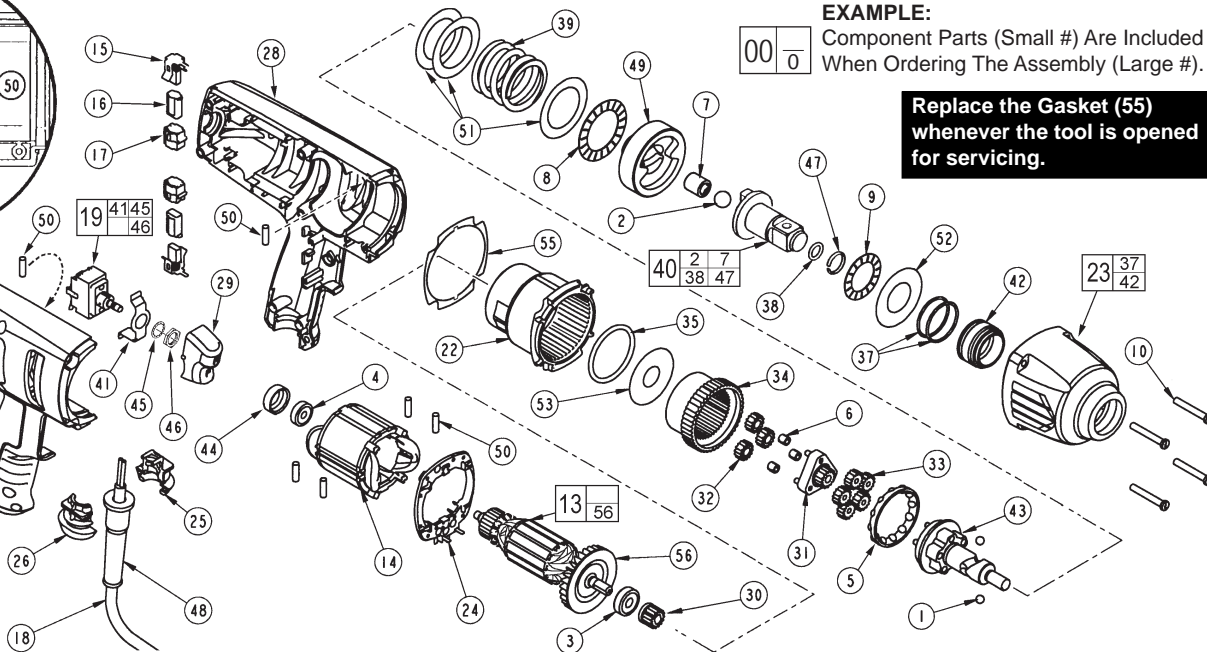
# SERVICE PARTS LIST

**BULLETIN NO.**  
**54-26-1777**

|                                                               |                |                                                |                   |
|---------------------------------------------------------------|----------------|------------------------------------------------|-------------------|
| <b>SPECIFY CATALOG NO. AND SERIAL NO. WHEN ORDERING PARTS</b> |                | REVISED BULLETIN<br>54-26-1776                 | DATE<br>Mar. 2011 |
| <b>3/4" D.I. IMPACT WRENCH</b>                                |                |                                                |                   |
| <b>CATALOG NO.</b>                                            | <b>9075-20</b> | <b>STARTING SERIAL NO.</b>                     | <b>239C</b>       |
|                                                               |                | <b>WIRING INSTRUCTION</b><br><b>58-01-1820</b> |                   |



Slug placement is for both handle halves.



**EXAMPLE:**  
Component Parts (Small #) Are Included When Ordering The Assembly (Large #).

**Replace the Gasket (55) whenever the tool is opened for servicing.**

| FIG. | PART NO.   | DESCRIPTION OF PART           | NO.REQ. |
|------|------------|-------------------------------|---------|
| 1    | 02-02-0250 | 1/4" Ball                     | (2)     |
| 2    | -----      | 1/2" Ball                     | (1)     |
| 3    | 02-04-0852 | Ball Bearing                  | (1)     |
| 4    | 02-04-0645 | Ball Bearing                  | (1)     |
| 5    | 02-40-0050 | Angular Contact Bearing       | (1)     |
| 6    | 02-50-3250 | Unit Cage Bearing             | (3)     |
| 7    | -----      | Drawn Cup Bearing             | (1)     |
| 8    | 02-80-0200 | Thrust Bearing                | (1)     |
| 9    | 02-80-3256 | Thrust Bearing                | (1)     |
| 10   | 05-88-5988 | K50 x 35mm Screw              | (4)     |
| 11   | 06-95-6290 | M5 x 2.24 x 18 Plastite Screw | (6)     |
| 12   | 12-20-9070 | Service Nameplate             | (1)     |
| 13   | 16-10-2275 | Armature                      | (1)     |
| 14   | 18-07-2275 | Field                         | (1)     |
| 15   | 22-18-0040 | Brush Assembly                | (2)     |
| 16   | 22-20-0110 | Brush Tube                    | (2)     |
| 17   | 22-20-0465 | Brush Tube Holder             | (2)     |
| 18   | 22-64-0970 | Cord                          | (1)     |
| ★ 19 | 23-66-1306 | Switch                        | (1)     |
| 22   | 28-14-0175 | Gearcase                      | (1)     |
| 23   | 14-38-0100 | Front Housing Assembly        | (1)     |
| 24   | 31-15-2045 | Field Connector               | (1)     |
| 25   | 31-17-0261 | Cord Clamp                    | (1)     |
| 26   | 31-17-0271 | Cord Clamp                    | (1)     |
| 27   | 31-44-2176 | Right Handle                  | (1)     |
| 28   | 31-44-2181 | Left Handle                   | (1)     |
| 29   | 31-92-0060 | Rocker Trigger                | (1)     |
| 30   | 32-60-0150 | Sun Gear                      | (1)     |
| 31   | 32-60-0175 | Sun Gear                      | (1)     |
| 32   | 32-62-0200 | Planet Gear                   | (3)     |
| 33   | 32-62-0215 | Planet Gear                   | (5)     |
| 34   | 32-65-0005 | Ring Gear                     | (1)     |
| 35   | 34-40-0070 | O-Ring                        | (1)     |
| 37   | -----      | O-Ring                        | (2)     |
| 38   | 34-40-1210 | O-Ring                        | (1)     |
| 39   | 40-50-0241 | Spring                        | (1)     |
| 40   | 14-73-0156 | Anvil Assembly                | (1)     |
| ★ 41 | -----      | Switch Bracket                | (1)     |
| 42   | -----      | Bushing                       | (1)     |
| 43   | 14-73-0300 | Cam Shaft Assembly            | (1)     |
| 44   | 42-96-0015 | Bearing Cup                   | (1)     |
| 45   | -----      | Supplied with Switch          | (1)     |
| 46   | -----      | Supplied with Switch          | (1)     |
| 47   | 44-90-4540 | Friction Ring                 | (1)     |
| 48   | 44-76-0210 | Cord Protector                | (1)     |
| 49   | 44-82-0210 | Ram                           | (1)     |
| 50   | 45-30-0025 | Rubber Slug                   | (6)     |
| 51   | 45-88-0535 | Washer                        | (3)     |
| 52   | 45-88-1575 | Washer                        | (1)     |

**NOTE:** The service replacement anvil assembly #40 comes with a friction ring and o-ring on the front for the socket retaining system. Early tool designs (S/N 239B401330001 to 239B403340000) used anvils that had a detent pin and detent spring to secure the sockets. The individual service parts are still available for the early design utilizing the detent pin (No. 44-60-1170) and detent spring (No. 40-50-8320).

| FIG. | PART NO.   | DESCRIPTION OF PART        | NO.REQ. |
|------|------------|----------------------------|---------|
| 53   | 45-88-3250 | Washer                     | (1)     |
| 55   | 43-44-0991 | Gasket                     | (1)     |
| 56   | 22-84-0375 | Fan                        | (1)     |
|      | 44-86-0282 | Ret Ring (Socket Retainer) | (1)     |
|      | 44-86-0285 | Ret Ring (Socket Retainer) | (1)     |

- FIG. 4** NOTES:  
Orient bearing seal (black side) toward the commutator.
- FIG. 10** Torque to 45-50 in./lbs.
- FIG. 11** Torque to 25-30 in./lbs.
- FIG. 16** At the time of brush replacement, the tool should be relubricated with Type "J" Grease, No.49-08-4220.
- FIG. 23,34,42, 43,49** **LUBRICATION (Type "J" Grease, No.49-08-4220):** Lightly coat with grease the Ring Gear (34) and the bearing races of the Camshaft Planet Carrier (43), the back bearing surface of the Ram (49) and the I.D. the Front Housing Bushing (42).
- FIG. 7,40** Place a dab of grease in the Needle Bearing (7) inside the Anvil (40).
- FIG. 31,32,33,43** Fill with grease the center of the five Planet Gears (33) on the Camshaft Assembly (43). Fill the center of the three Planet Gears (32) on the Sun Gear (31).
- FIG. 49** Place approximately 1/2 oz. of grease in the front cavity of the Ram.
- FIG. 43** Place approximately 1/2 oz. grease on the Camshaft (43) inside the Spring (39).