



# SERVICE PARTS LIST

BUL. 54-26-1100

## IMPACT WRENCH

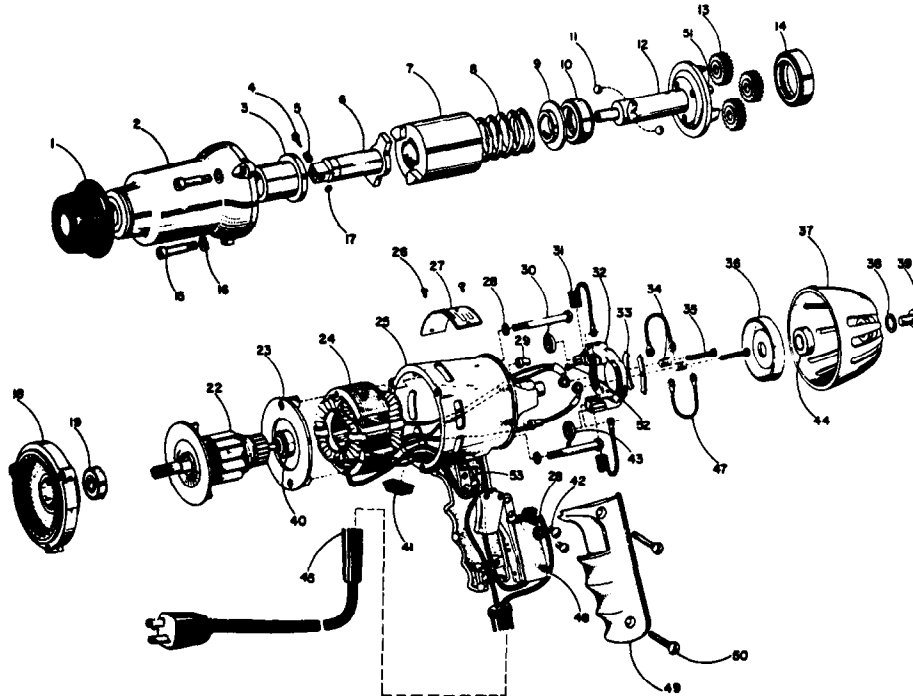
REVISED BUL 6315-1 DATE Feb. '68

Catalog No. 9010

Starting Serial No. 315-1001

WIRING INSTR.

Both Model and Serial No. must be furnished to obtain correct parts.



ILLUSTRATED PARTS

FIG.	PART NO.	DESCRIPTION	FIG.	PART NO.	DESCRIPTION	
1	42-52-0110	Protection Cap	28	06-97-3200	No. 8 Split Ring Lock Washer	(4)
2	14-30-0230	Gear Case Assy. (Includes Item 3)	29	23-16-0230	Bushing Insulator	(2)
3	42-40-0250	Bushing	30	06-81-4575	8-32x2 Rd. Hd. Machine Screw	(2)
4a	44-60-0300	Ball End Locking Pin (Specify	31	22-16-0220	Brush	(2)
4b	44-60-0310	Flat End Locking Pin One)	32	23-39-0060	Rocker Ring	
5	40-50-4800	Spring	33	22-58-0050	Contact	(2)
6	42-06-0050	Anvil (Includes Item 4a, 5, 17) Specify	34	40-50-5100	Contact Spring	(2)
	42-06-0060	Anvil (Includes Item 4b, 5, 17) One	35	23-74-0240	Screw Terminal	(2)
7	42-81-0050	Impactor	36	22-32-0120	Insulation Cap	
8	40-50-4900	Impactor Spring	37	28-12-0201	End Cap	
9	43-56-0090	Spring Guide	38	06-97-2650	5/16 Int. Tooth Lock Washer	
10	02-80-1550	Thrust Bearing	39	06-75-4350	5/16-24x1/2 Socket Hd. Cap Screw	
11	02-02-0280	9/32 Steel Ball	40	02-04-0600	Ball Bearing	(2)
12	36-10-0551	Cam Shaft (Includes Item 51(3))	41	23-16-0240	Rubber Insulator	(3)
13	32-62-0051	Planet Gear	42	06-81-4565	8-32x1/4 Rd. Hd. Machine Screw	(2)
14	02-80-1850	Thrust Bearing	43	23-52-0150	Brush Spring	(2)
15	06-75-2625	10-32x1-1/8 Socket Hd. Cap Screw	44	45-88-0460	Neoprene Rubber Washer	(3)
16	06-97-3400	No. 10 Split Ring Lock Washer	45	22-64-0390	Cord Set	(3)
17	42-76-0140	Collar	47	23-46-0050	Shunt	(2)
18	28-28-1321	Diaphragm (Includes Item 51)	48	23-66-0450	Switch	
19	02-04-1000	Ball Bearing	49	28-20-3551	Handle Cover	
22	16-40-1020	Armature Assy.	50	06-81-3750	8-32x1 Oval Hd. Screw	(2)
23	42-14-0080	Baffle	51	45-58-0160	Planet Gear Stud	(3)
24	18-40-1010	Field Assembly	52	06-81-0100	6-32x1/4 Binder Hd. Screw	(2)
25	28-50-5071	Motor Housing	53	22-56-0190	Connector	
26	06-77-0050	No. 0x5/32 Drive-In Screw				(2)
27	12-90-0110	Name Plate				

MISCELLANEOUS PARTS NOT SHOWN

PART NO.	DESCRIPTION
49-96-0070	5/32 Allen Wrench