

PARTS LEGEND PASLODE CORDLESS FRAMING NAILER, 900420

1	900320	1	Grille	50	900521	1	Combustion Chamber Assembly
*2	900315	1	Filter	51	404827	2	Pin
3	900469	1	Fan Motor Assembly (Includes PC board, washer and flat retaining ring)	*52	404419	1	Bumper
4	900300	1	Retaining Ring (flat)	53	404411	3	Spring
6	900470	1	Motor Mount	54	900934	2	Steel Ring, Sleeve
7	401355	1	Retaining Ring (curved)	55	901204	1	Sleeve Assembly
8	901063	4	Shoulder Screw 10-24 x 1-1/2	56	404464	2	Rubber Stop
*10	401356	1	Motor Sleeve	57	404424	1	Reed Valve
11	900286	1	Spark Plug Assembly, includes O-Ring	58	404422	1	Muffler
12	404428	2	Push Rod	59	404423	1	Muffler Cover
13	404453	1	Bracket, Cylinder Head	61	900596	6	Screw Thread Forming Sems 8-32 x 7/16
14	404432	1	Bushing, Actuator	62	403816	2	Socket Head Capscrew 10-24 x 1-1/8
15	404444	1	Actuator	63	404445	2	Bushing, Shear Block
16	404433	1	Actuator Pin	64	900975	1	Wear Plate, Nose
17	401340	1	Stem Adapter	65	901249	1	Upper Probe
18	900471	1	Cylinder Head Machined	66	901239	1	Lower Probe
*19	403992	1	O-Ring	67	900592	2	S.H.C.S. Sems 10-32 x 1/2
20	403167	1	Fan Blade Assembly	68	401380	1	Tie Bar
21	900474	1	Spark Unit Assembly	70	404704	1	Housing Assembly
22	900475	1	Molded Circuit Assembly	71	901251	1	Utility Hook Assembly
23	900478	1	Spark Plug Contact Assembly	72	404390	2	Label
24	900231	1	Clip, ESU Wire	73	900980	1	Retainer Ring, Sleeve
■ 25	403987	2	Screw Thread Forming 6-32 x 1/4	▲ 74	900593	3	S.H.C.S. Sems 10-24 x 5/8
26	900461	1	Handle Assembly Kit - Right & Left	75	403985	1	Follower
27	404448	1	Roller Lever Assembly	76	900520	1	Follower Bushing Spring Assembly
29	404702	2	Screw Thread Forming 6 x 3/8	77	901202	1	Retaining Ring
30	404436	1	Nail Channel	78	403986	1	Spring Pin
31	404441	1	Cover Plate Magazine	79	403984	1	Follower Guide
32	901222	2	Shoulder Screw 10-32 x 1/2	80	900297	1	Follower Button
33	900464	1	Cap	81	404457	1	Spring
34	404412	1	Wear Plate, Chamber Lock	82	404922	2	Pad, Battery Contact
35	900453	4	Screw Plastite 8-16 x 7/8	83	401450	5	Fuel Cell Pad
** 36	900508	1	Warning Label	85	901240	1	Probe Release
37	404442	1	Channel Magazine	86	404426	1	Exhaust Baffle
■ 38	900594	4	S.H.C.S. Sems 8 - 32 x 1/2	87	404425	1	Reed Plate
39	901241	1	Probe Stop	■ 88	900969	4	Torx Screw 8-32 x 5/8
40	404451	1	Lockout Bar, Follower	89	900481	1	O-Ring
41	901203	1	Shear Block	**90	900497	1	Warning Label
42	901238	1	Spring, Flat	91	900372	1	Combustion Chamber Ring
44	404435	1	Trigger	92	404407	1	Combustion Chamber
45	900269	1	Chamber Lock Bar	93	900595	2	Torx Screw Sems 8-32 x 3/8
46	404927	1	Spring, Trigger	95	901260	1	Nameplate
47	401328	1	Retainer ring	96	900427	1	Light Pipe
48	401461	2	Piston Ring	97	900468	1	Washer, Motor Shaft
49	404485	1	Piston Assembly	99	900546	1	Brass Insert
				100	900597	4	Screw Thread Forming Sems 6-19 x 3/8

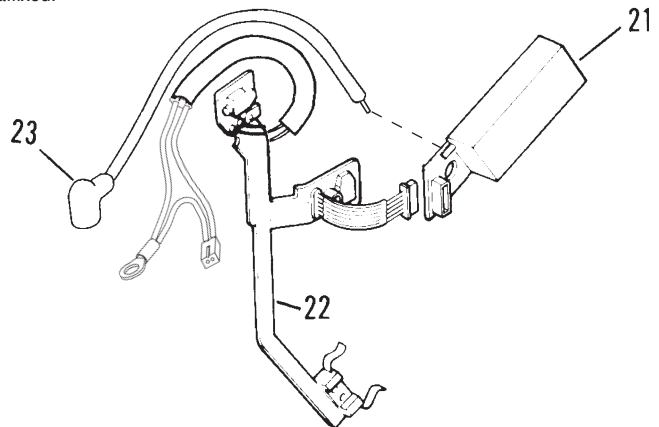
- * Denotes normal wear items
- ** Make sure Warning Labels (#900497,900508) are properly affixed. Replace if necessary. Label is available at no charge through the Service Department.
- ▲ Apply Loctite 242 (Blue) Part No. 093500.
- Apply Loctite RC-620 (Green) Part No. 401491
- Denotes new change.

SAFETY INSTRUCTIONS

WEAR EYE AND HEARING PROTECTION



Always wear hearing protection and eye protection devices, including side shields when operating or working in the vicinity of a tool.



WARNING

All parts must be periodically inspected and replaced if worn or broken. Failure to do this can affect the tool's operation and present a safety hazard.

CORDLESS FRAMING NAILER, 900420

