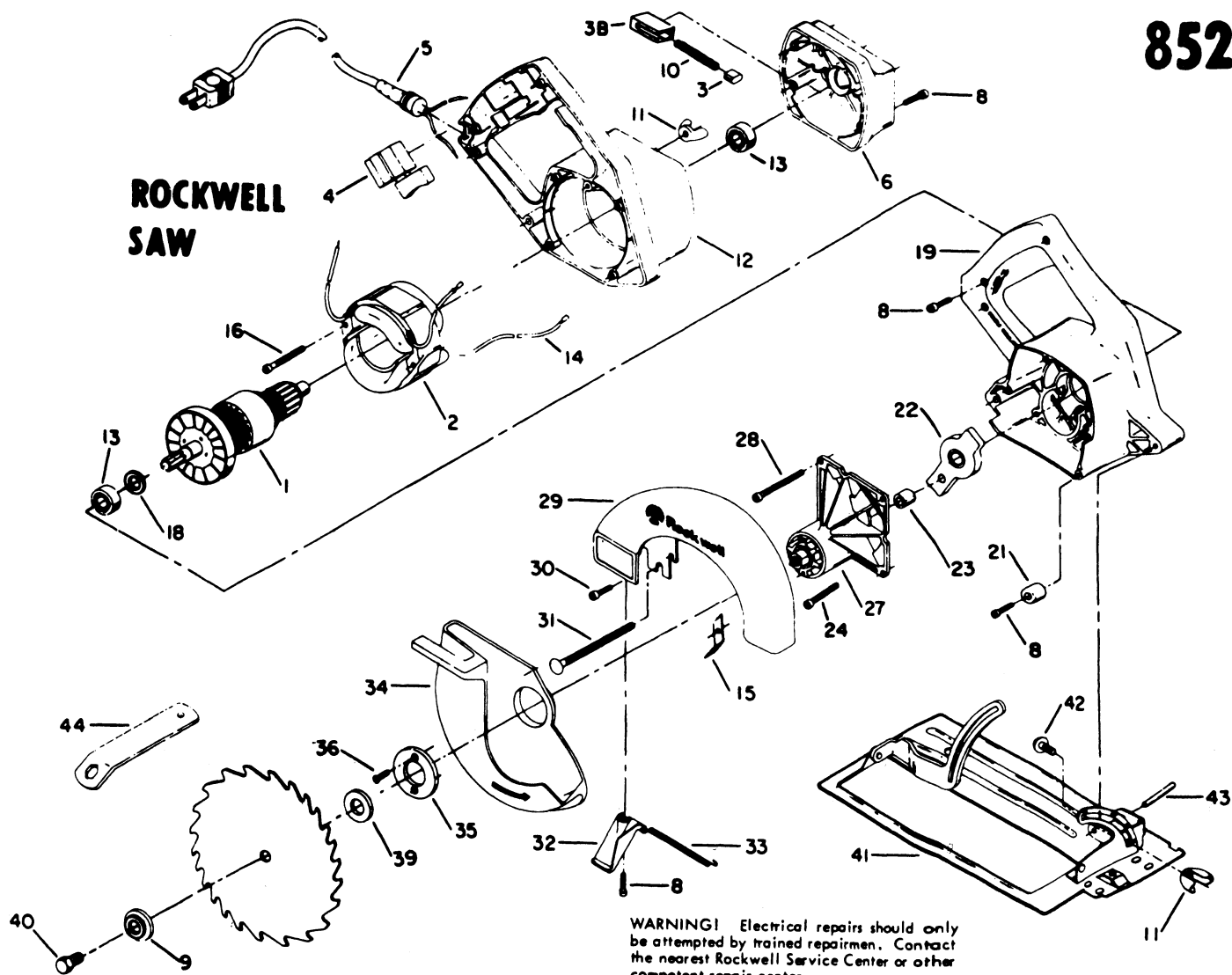


ROCKWELL SAW



WARNING! Electrical repairs should only be attempted by trained repairmen. Contact the nearest Rockwell Service Center or other competent repair center.

Ref. No.	Part No.	Description	Ref. No.	Part No.	Description	Ref. No.	Part No.	Description
1	684389	Armature	18	803317	Washer	35	683239	Retainer
2	684391	Field	19	683569	Gear Housing	36	683440	Screw
3	683423**	Brush	21	683571	Bumper	39	680665	Inside Flange
38	683422**	Brush Holder	22	686083	Intermediate Plate	40	683436	Blade Screw
4	683447	Switch	23	681514	Spacer	41	683405	Base Assy.
5	852894	Cord	24	856482	Screw	42	838652	Bolt
6	684198	End Cap	27	683246	Gear Cover Assy. Incl: Gear, Bearing & Blade	43	683429	Pin
8	856480	Screw	28	683439	Gear Cover Screw	44	55722	Wrench
9	686259	Outside Flange	29	683804	Upper Guard	*	53114	Rip Guide Assy., Incl:
10	680880	Brush Spring	30	683787	Screw	*	848706	Rip Guide Screw
11	856440	Wing Nut	31	683446	Bolt	*	48230	Lubricant (5½ oz. 156 gm. Tube)
12	683508	Motor Hsg.	32	683536	Dust Chute			
13	855201	Bearing	33	848686	Spring			
14	683538	Lead Assy.	34	684934	Telescoping Guard			
15	684793	Guard Stop						
16	683439	Screw						

** See Service Notes

SERVICE NOTES

BRUSH AND BRUSH HOLDER

When assembling the brush and brush holder, be sure the lead terminal is installed between the spring and carbon brush.