

## Parts List: Band Saw Assembly (8014FW only)

(refer to breakdown on page 35)

Index No.	Part No.	Description	Size	Qty
1	VBS1408-1010	Work Table		1
2	VBS14-102	Table Support Frame		1
3	TS-1533032	Phillips Pan Head Machine Screw	5 x 10mm	2
4	TS-1551071	Lock Washer	5mm	2
5	8014FW-15	Rivet	2mm	4
6	1030	Table Bracket, Right		1
7	TS-0060091	Hex Cap Screw	3/8-16 x 2"	2
8	TS-0720091	Lock Washer	3/8"	2
9	TS-0680042	Flat Washer	3/8"	2
10	1040	Table Bracket, Left		1
11	TS-0060091	Hex Cap Screw	3/8-16 x 2"	2
12	TS-0720091	Lock Washer	3/8"	2
13	TS-0680042	Flat Washer	3/8"	2
14	TS-0680061	Washer	1/2"	2
15	TS-0211111	Socket Head Cap Screw	1/2-13 x 2 1/2"	2
16	1070	Tube Screw		4
17	TS-0209091	Socket Head Cap Screw	3/8-16 x 2"	4
18	1090	Table Support Housing		1
19	TS-0209061	Socket Head Cap Screw	3/8-16 x 1 1/4"	3
20	TS-0680042	Flat Washer	3/8"	3
21	TS-0720091	Lock Washer	3/8"	3
22	TS-0570031	Hex Nut	3/8-16	3
23	1100	Guide Support Housing		1
25	TS-0720081	Lock Washer	5/16"	2
26	TS-0680031	Flat Washer	5/16"	2
27	VBS16-155	Rip Fence		1
28	8014FW-128	Tilt Indicator (Left & Right)		1
29	8771	Tilt Indicator (Forward & Back)		1
30	9700	Indicator Needle		2
31	8014FW-131	Upper Blade Guide Support		1
32	8014FW-132	Lower Blade Guide Support		1
33	VBS1220A-132	Blade Guide		4
34	TS-1503061	Socket Head Cap Screw	6 x 25mm	4
35	TS-1551041	Lock Washer	6mm	4
36	TS-1550041	Flat Washer	6mm	4
37	8014FW-137	Long Blade Stopper		1
38	8014FW-138	Short Blade Stopper		1
39	1350	Blade Guide Post		1
40	TS-1502041	Socket Head Cap Screw	5 x 16mm	2
41	1360	Guide Post Housing		1
42	TS-1524031	Socket Set Screw	8 x 12mm	4
43	TS-0208071	Socket Head Cap Screw	5/16-18 x 1 1/4"	4
44	TS-0720081	Lock Washer	5/16"	4
45	TS-0680031	Flat Washer	5/16"	4
46	1361	Guide Post Spring		1
47	TS-081C022	Flat Head Screw	#10-24 X 3/8"	4
48	1370	Left Blade Guard		1
49	TS-1534041	Phillips Pan Head Machine Screw	5 x 10mm	2
50	TS-1551031	Lock Washer	5mm	2
51	TS-1550031	Flat Washer	5mm	2
52	1380	Right Blade Guard		1
53	TS-1534041	Phillips Pan Head Machine Screw	5 x 10mm	2
54	TS-1551031	Lock Washer	5mm	2
55	TS-1550031	Flat Washer	5mm	2
56	1390	Post Holding Pin		1

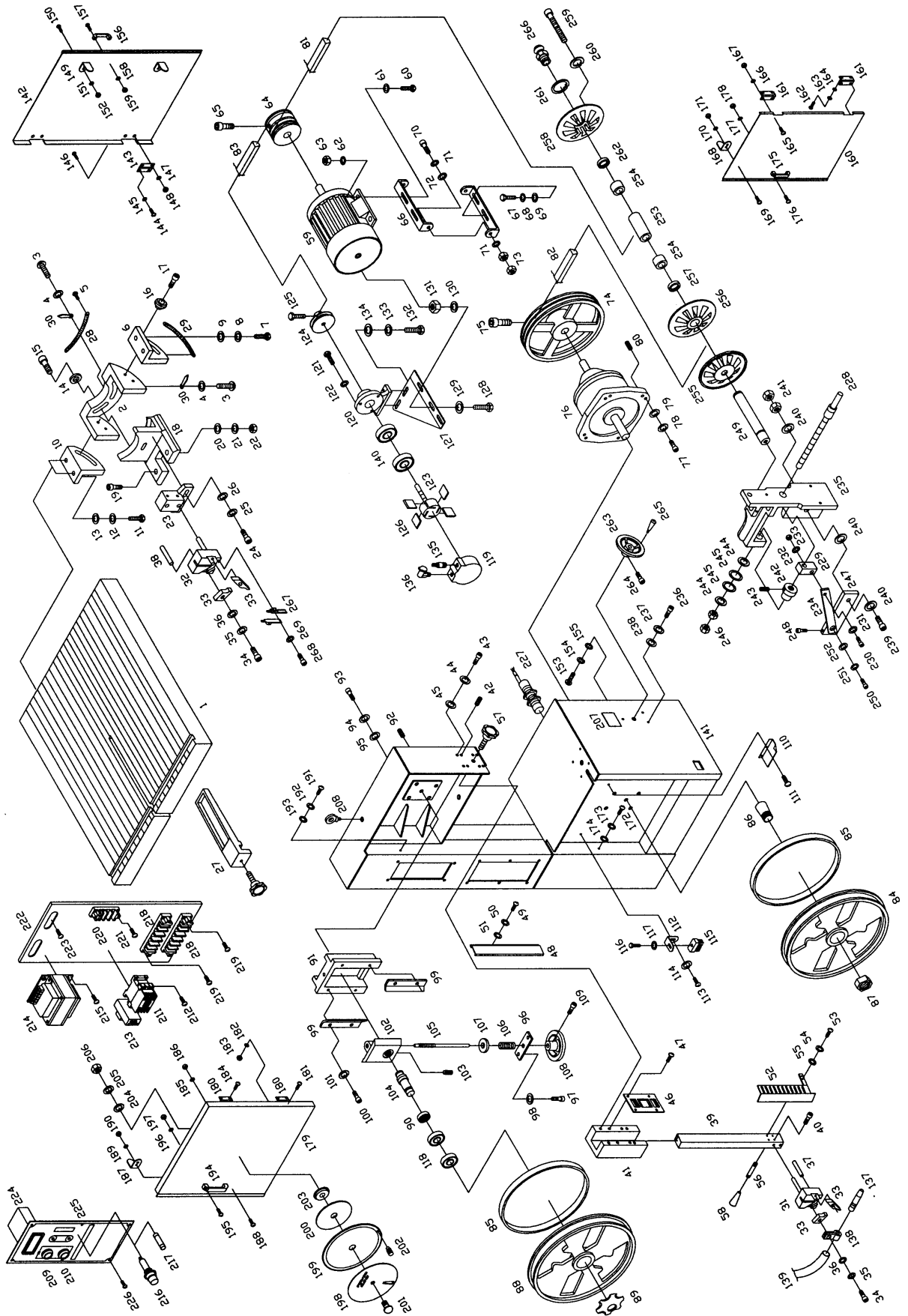
57	9015	Guide Post Locker	1
58	9210	Handle Knob	1
59	VBS1610-2000	Main Drive Motor	1
60	TS-0051051	Hex Cap Screw	5/16-18 x 1" 2
61	TS-0680031	Flat Washer	5/16" 2
62	TS-0720081	Lock Washer	5/16" 2
63	TS-0570021	Hex Nut	5/16-18 2
64	VBS1610-2010	Motor Pulley	1
65	TS-0207071	Socket Head Cap Screw	1/4 x 1 1/4" 1
66	2020	Motor Suspension Arm	2
67	TS-0051031	Hex Cap Screw	5/16-18 x 3/4" 2
68	TS-0720081	Lock Washer	5/16" 2
69	TS-0680031	Flat Washer	5/16" 2
70	TS-0209061	Socket Head Cap Screw	3/8-16 x 1 1/4" 2
71	TS-0720091	Lock Washer	3/8" 4
72	TS-0680042	Flat Washer	3/8" 2
73	TS-0570031	Hex Nut	3/8-16 4
74	2130	Reducer Pulley	1
75	TS-0209051	Socket Head Cap Screw	3/8-16 x 1" 1
76	VBS1408-2300	Main Gear Box (Speed Reducer)	1
77	TS-0209051	Socket Head Cap Screw	3/8-16 x 1" 4
78	TS-0720091	Lock Washer	3/8" 4
79	TS-0680042	Flat Washer	3/8" 4
80	TS-0271071	Socket Set Screw	3/8-16 x 3/4" 4
81	8014FW-181	V-Belt, Variator + 2010	1
82	8014FW-182	V-Belt, Variator + 2130	1
83	8014FW-183	V-Belt, 2010 + 4040	1
84	VBS1408-3010	Lower Wheel	1
85	VBS14-302	Rubber Tire	2
86	VBS1408-3030	Taper Sleeve	1
87	VBS1408-3040	Wheel Locking Nut	1
88	VBS1408-3050	Upper Wheel	1
89	8014FW-189	Upper Wheel Locker	1
90	8014FW-190	Upper Wheel Nut	1
91	8014FW-191	Slide Block Housing	1
92	TS-1524031	Socket Set Screw	8 x 12mm 4
93	TS-0208061	Socket Head Cap Screw	5/16-18 x 1 4
94	TS-0720081	Lock Washer	5/16" 4
95	TS-0680031	Flat Washer	5/16" 4
96	8014FW-196	Slide Block Seat	1
97	TS-0208041	Socket Head Cap Screw	5/16-18 x 3/4" 2
98	TS-0720081	Lock Washer	5/16" 2
99	8014FW-199	Slide Block Guides	2
100	TS-0208061	Socket Head Cap Screw	5/16-18 x1 4
101	TS-0720081	Lock Washer	5/16" 4
102	3111	Upper Wheel Slider	1
103	TS-0270031	Socket Set Screw	5/16-18 x 3/8" 1
104	8014FW-1104	Slider Screw Shaft	1
105	VBS1408-3120	Wheel Elevating Shaft	1
106	VBS1408-3121	Spring	1
107	3150	Washer	1
108	9030	Handwheel	1
109	TS-0208031	Socket Head Cap Screw	5/16-18 x 5/8" 1
110	9600	Chip Stopper	1
111	8014FW-1111	Pan Head Bolt	8 x 12mm 2
112	9780	Brusher Bracket	1
113	8014FW-1113	Pan Head Bolt	8 x 12mm 1
114	TS-1551061	Lock Washer	8mm 1
115	9790	Chip Brusher	1
116	TS-0050031	Hex Cap Screw	1/4-20 x 3/4" 1

117	TS-0680021	Flat Washer	1/4"	1
118	8014FW-1118	Ball Bearing		2
119	8014FW-1119	Air Pump Housing		1
120	8014FW-1120	Air Pump Cover		1
121	TS-0050051	Hex Cap Screw	1/4-20 x 1"	3
122	TS-0720071	Lock Washer	1/4"	3
123	8014FW-1123	Air Pump Shaft		1
124	4040	Air Pump Pulley		1
125	TS-0050011	Hex Cap Screw	1/4-20 x 1/2"	1
126	4050	Air Pump Leaf		4
127	8014FW-1127	Air Pump Suspend Arm		1
128	TS-0051051	Hex Cap Screw	5/16-18 x 1"	2
129	TS-0680031	Flat Washer	5/16"	2
130	TS-0720081	Lock Washer	5/16"	2
131	TS-0561021	Hex Nut	5/16-18	2
132	TS-0051031	Hex Cap Screw	5/16-18 x 3/4"	2
133	TS-0720081	Lock Washer	5/16"	2
134	TS-0680031	Flat Washer	5/16"	2
135	8014FW-1135	Air Outlet		1
136	8014FW-1136	Air Inlet		1
137	4170	Air Nozzle		1
138	4180	Air Nozzle Clipper		1
139	4190	Air Tube		1
140	8014FW-1140	Ball Bearing		2
141	VBS1408-5000	Main Body		1
142	VBS1408-5100	Rear Door		1
143	9310	Upper Door Hinge		2
144	TS-1534041	Phillips Pan Head Machine Screw	5 x 10mm	4
145	TS-1551031	Lock Washer	5mm	4
146	TS-1534041	Phillips Pan Head Machine Screw	5 x 10mm	4
147	TS-1551031	Lock Washer	5mm	4
148	TS-1540031	Hex Nut	5mm	4
149	9500	Spring Plate		2
150	TS-1534041	Phillips Pan Head Machine Screw	5 x 10mm	4
151	TS-1551031	Lock Washer	5mm	4
152	TS-1540031	Hex Nut	5mm	4
153	TS-1534041	Phillips Pan Head Machine Screw	5 x 10mm	2
154	TS-1551031	Lock Washer	5mm	2
155	TS-1550031	Flat Washer	5mm	2
156	9590	Handle Arms		1
157	TS-1534052	Phillips Pan Head Machine Screw	6 x 16mm	2
158	TS-1551041	Lock Washer	6mm	2
159	TS-1540041	Hex Nut	6mm	2
160	VBS1408-5120	Lower Door		1
161	9310	Upper Door Hinge		2
162	TS-1533032	Phillips Pan Head Machine Screw	5 x 10mm	4
163	TS-1551031	Lock Washer	5mm	4
164	TS-1550031	Flat Washer	5mm	4
165	TS-1534041	Phillips Pan Head Machine Screw	5 x 10mm	4
166	TS-1551031	Lock Washer	5mm	4
167	TS-1540031	Hex Nut	5mm	4
168	9500	Spring Plate		1
169	TS-1534041	Phillips Pan Head Machine Screw	5 x 10mm	2
170	TS-1551031	Lock Washer	5mm	2
171	TS-1540031	Hex Nut	5mm	2
172	TS-1534041	Phillips Pan Head Machine Screw	5 x 10mm	1
173	TS-1551031	Lock Washer	5mm	1
174	TS-1550031	Flat Washer	5mm	1
175	9590	Handle Arms		1
176	TS-1534052	Phillips Pan Head Machine Screw	6 x 16mm	2

177	TS-1551041	Lock Washer	6mm	2
178	TS-1540041	Hex Nut	6mm	2
179	VBS1408-5140	Upper Door		1
180	9300	Upper Door Hinge		2
181	TS-1533052	Phillips Pan Head Machine Screw	5 x 16mm	4
182	TS-1551031	Lock Washer	5mm	4
183	TS-1540031	Hex Nut	5mm	4
184	TS-1533032	Phillips Pan Head Machine Screw	5 x 10mm	4
185	TS-1551031	Lock Washer	5mm	4
186	TS-1540031	Hex Nut	5mm	4
187	9500	Spring Plate		1
188	TS-1534041	Phillips Pan Head Machine Screw	5 x 10mm	2
189	TS-1551031	Lock Washer	5mm	2
190	TS-1540031	Hex Nut	5mm	2
191	TS-1534041	Phillips Pan Head Machine Screw	5 x 10mm	1
192	TS-1551031	Lock Washer	5mm	1
193	TS-1550031	Flat Washer	5mm	1
194	9590	Handle Arms		1
195	TS-1534052	Phillips Pan Head Machine Screw	6 x 16mm	2
196	TS-1551041	Lock Washer	6mm	2
197	TS-1540041	Hex Nut	6mm	2
198	8014FW-1198	Speed and Pitch Selector (1)		1
199	8014FW-1199	Speed and Pitch Selector (2)		1
200	8014FW-1200	Speed and Pitch Selector (3)		1
201	8014FW-1201	Brass Bolt		1
202	8014FW-1202	Brass Handle		1
203	8014FW-1203	Selector Bushing		1
204	TS-1550011	Flat Washer	3mm	1
205	8014FW-1205	Lock Washer	3mm	1
206	TS-1540011	Hex Nut	3mm	1
207	8092	Gear Box Instruction		1
208	9999	Eye Bolt		1
209	6600	Pushbutton, ON		1
210	6602	Pushbutton, OFF		1
211	6710	Contactora		1
212	TS-1532052	Phillips Pan Head Machine Screw	4 x 16mm	2
213	6720	Contactora		1
214	6745	Voltage Reducer		1
215	TS-1532032	Phillips Pan Head Machine Screw	4 x 10mm	4
216	8014FW-1216	Fuse Holder		3
217	8014FW-1217	Fuse		1
218	6770	Wire Housing		3
219	TS-1532052	Phillips Pan Head Machine Screw	4 x 16mm	2
220	8014FW-1220	Ground Seat		1
221	TS-1532042	Phillips Pan Head Machine Screw	4 x 12mm	2
222	6799	Wiring Plate		1
223	TS-081C042	Phillips Pan Head Machine Screw	#10-24 x 5/8"	4
224	8014FW-1224	Digital Tachometer		1
225	8014FW-1225	Name Plate		1
226	TS-1533032	Phillips Pan Head Machine Screw	5 x 10mm	6
227	8014FW-1227	Speed Readout Detector		1
228	VBS16-7400	Speed Changing Shaft		1
229	VBS16-7410	Speed Block		1
230	TS-0209081	Socket Head Cap Screw	3/8-16 x 1 3/4"	1
231	TS-0680042	Flat Washer	3/8"	1
232	TS-0720091	Lock Washer	3/8"	1
233	TS-0570031	Hex Nut	3/8-16	1
234	VBS16-7430	Gear Shaft Arm		1
235	VBS16-7450	Speed Shaft Housing		1
236	TS-1503041	Socket Head Cap Screw	6 x 16mm	3

237	TS-1551041	Lock Washer	6mm	3
238	TS-1550041	Flat Washer	6mm	3
239	TS-0211101	Socket Head Cap Screw	1/2-13 x 2¼"	1
240	TS-0680061	Flat Washer	1/2"	3
241	TS-0561051	Hex Nut	1/2-13	2
242	VBS16-7451	Washer Tube		1
243	TS-0270131	Socket Head Cap Screw	5/16-18 x 2"	1
244	TS-0680061	Flat Washer	1/2"	2
245	8014FW-1245	Wavy Washer	1/2"	2
246	TS-0561051	Hex Nut	1/2-13	2
247	VBS16-7460	Pulley Shaft Arm		1
248	TS-0270131	Socket Set Screw	5/16-18 x 2"	1
249	7470	Variable Pulley Shaft		1
250	TS-0208021	Socket Head Cap Screw	5/16-18 x 1/2"	1
251	TS-0720091	Lock Washer	3/8"	1
252	TS-0680042	Flat Washer	3/8"	1
253	VBS1610-7490	Pulley Shaft Housing		1
254	8014FW-1254	Needle Bearing		2
255	VBS16-7500	Inner Pulley		1
256	VBS16-7510	Middle Pulley		1
257	8014FW-1257	Oil Seal	Φ26xΦ19x5mm	1
258	VBS16-7520	Outer Pulley		1
259	TS-2236911	Socket Head Cap Screw	M6x100	3
260	TS-1551041	Lock Washer	6mm	3
261	8014FW-1261	Retaining Ring	19mm	1
262	8014FW-1262	Oil Seal	Φ26xΦ19x5mm	1
263	9030	Handwheel		1
264	TS-0208031	Socket Head Cap Screw	5/16-18 x 5/8"	1
265	9230	Handwheel Knob		1
266	9995	Grease Nozzle		1
267	1080	Blade Guard		2
268	TS-1503021	Socket Head Cap Screw	6 x 10mm	2
269	TS-1551041	Lock Washer	6 mm	2

# Band Saw Assembly (8014FW only)



## Parts List: Welder, Shear and Work Lamp Assemblies (8014FW only)

(refer to breakdown on page 39)

Index No.	Part No.	Description	Size	Qty
2	8014FW-22	Pan Head Bolt	#5 x 5/8"	2
3	8014FW-23	Lock Washer	#5	2
4	PR-EV-6011	Insulator		1
5	PR-EV-6020	Guide Block		1
6	TS-1502061	Socket Head Cap Screw	5 x 25mm	2
7	TS-1551031	Lock Washer	5mm	2
8	PR-EV-6021	Spring Bracket		1
9	8014FW-29	Pan Head Bolt	5 x 6mm	2
10	TS-1551031	Lock Washer	5mm	2
11	PR-EV-6030	Guide Casting		1
12	TS-1534041	Flat Head Phillips Machine Screw	5 x 10mm	4
13	8014FW-213	Pan Head Bolt	5 x 25mm	1
14	TS-1540031	Hex Nut	5mm	1
15	PR-EV-6040	Housing		1
16	TS-1533052	Phillips Pan Head Machine Screw	5 x 16mm	6
17	PR-EV-6050	Stationary Jaw		1
18	TS-1502051	Socket Head Cap Screw	5 x 20mm	3
19	PR-EV-6051	Insulator		1
20	PR-EV-6052	Insulating Tube		3
21	PR-EV-6053	Insulate Washer		3
22	PR-EV-6054	Spacer		3
23	PR-EV-6060	Eccentric Shaft		2
24	PR-EV-6070	Right Clamp Lever		1
25	8014FW-225	Pan Head Bolt	5/16 x 3/4"	2
26	TS-0570021	Hex Nut	5/16-18	2
27	PR-EV-6071	Left Clamp Lever		1
28	8014FW-228	Pan Head Bolt	5/16 x 3/4"	2
29	TS-0570021	Hex Nut	5/16-18	2
30	PR-EV-6100	Right Clamp Support		1
31	PR-EV-6101	Left Clamp Support		1
32	PR-EV-6110	Right Clamp Plate		1
33	TS-1533032	Phillips Pan Head Machine Screw	5 x 10mm	1
34	TS-1551031	Lock Washer	5mm	1
35	PR-EV-6111	Left Clamp Plate		1
36	TS-1533032	Phillips Pan Head Machine Screw	5 x 10mm	1
37	TS-1551031	Lock Washer	5mm	1
38	PR-EV-6120	Cam		2
39	PR-EV-6130	Moving Jaw		1
40	TS-1502031	Socket Head Cap Screw	5 x 12mm	2
41	PR-EV-6150	Weld Button		1
42	6160	Micro Switch		2
43	PR-EV-6161	Switch Bracket		1
44	TS-1531022	Phillips Pan Head Machine Screw	3 x 8mm	2
45	8014FW-245	Pan Head Bolt	3 x 15mm	2
46	TS-1550011	Flat Washer	3mm	2
47	TS-1540011	Hex Nut	3mm	2
48	PR-EV-6170	Pressure Adjust Knob		1
49	PR-EV-6180	Shaft		1
50	TS-0680021	Flat Washer	1/4"	1
51	TS-0720071	Lock Washer	1/4"	1
52	TS-0570011	Hex Nut	1/4-20	1
53	PR-EV-6200	Cam		1
54	PR-EV-6210	Weld Tension Arm		1
55	TS-081F052	Phillips Pan Head Machine Screw	1/4-20 x 3/4	1
56	PR-EV-6211	Bushing		1

57	PR-EV-6220	Short Spring		1
58	8014FW-258	Pan Head Bolt	5 x 6mm	2
59	TS-1551031	Lock Washer	5mm	2
60	PR-EV-6230	Spring, Long		1
61	PR-EV-6240	Transformer		1
62	8014FW-262	Copper Pan Head Bolt	3/16 x 3/8"	2
63	TS-0720051	Lock Washer	#10	2
64	TS-1533042	Phillips Pan Head Machine Screw	5 x 12mm	4
65	TS-1550031	Flat Washer	5mm	4
66	TS-1540031	Hex Nut	5mm	4
67	PR-EV-6250	Switch		1
68	PR-EV-6260	Grinder Motor		1
69	TS-1534041	Phillips Flat Head Machine Screw	5 x 10mm	4
70	PR-EV-6270	Spacer		1
71	PR-EV-6280	Grinder Wheel		1
72	8014FW-272	Flat Washer		1
73	8014FW-273	Hex Nut		1
74	PR-EV-6290	Grinder Guard		1
75	TS-1534041	Phillips Flat Head Machine Screw	5 x 10mm	2
76	PR-EV-6291	Grinder Cover		1
77	PR-EV-6330	Welder Name Plate		1
78	8014FW-278	Rivet	2mm	4
79	PR-EV-6340	Instruction Label		1
80	8014FW-280	Rivet	2mm	4
81	PR-EV-6350	Grinder Label		1
82	8014FW-282	Anneal Button		1
83	8014FW-283	Pan Head Bolt	3 x 15mm	2
84	TS-1550011	Flat Washer	3mm	2
85	TS-1540011	Hex Nut	3mm	2
86	VBS14-609	Knob		2
87	VBS2012-6810	Light Shield		1
88	VBS2012-6820	Shield Jointer		1
89	VBS2012-6830	Brass Nut		2
90	VBS2012-6840	Lamp Arm		1
91	VBS2012-6860	Arm Tube		2
92	VBS2012-6870	Tube Holder		2
93	VBS2012-6880	Arm Nut		3
94	VBS2012-6890	Tube Locker		2
95	VBS2012-6900	Arm Housing Adjuster		1
96	VBS2012-6910	Housing Adjust Screw		1
97	VBS2012-6920	Lamp Arm Housing		1
98	VBS16-6930	Upper 6920 Holder		1
99	TS-1502081	Socket Head Cap Screw	5 x 35mm	1
100	VBS16-6931	Lower 6920 Holder		1
101	TS-1502081	Socket Head Cap Screw	5 x 35mm	1
102	VBS1610-6950	Lamp Socket		1
103	8014FW-2103	Washer		2
104	8014FW-2104	Nut		1
105	TS-1550071	Flat Washer	10mm	1
106	8014FW-2106	Rotating Button		1
107	VBS2012-9040	Brass Handwheel		1
108	PR-EV-1910	Spindle Bushing		3
109	TS-0207061	Socket Head Cap Screw	1/4-20 x 1"	1
110	TS-0680021	Flat Washer	1/4"	1
111	TS-0720071	Lock Washer	1/4"	1
112	TS-0570011	Hex Nut	1/4-20	1
113	TS-0207081	Socket Head Cap Screw	1/4-20 x 1 1/2"	1
114	TS-0680021	Flat Washer	1/4"	1
115	TS-0720071	Lock Washer	1/4"	1
116	TS-0570011	Hex Nut	1/4-20	1



117	PR-EV-1920	Spindle Lift		1
118	8014FW-2118	Retaining Ring	25mm	2
119	PR-EV-1930	Blade Shaft		1
120	8014FW-2120	Retaining Ring	5mm	2
121	PR-EV-1940	Vaned Iron Plate		2
122	TS-081C022	Phillips Pan Head Machine Screw	#10-24 X 3/8"	4
123	TS-0720051	Lock Washer	#10	4
124	PR-EV-1950	Lower Blade		2
125	PR-EV-1960	Upper Blade		1
126	PR-EV-1970	Left Joint Plate		1
127	TS-0208031	Socket Head Cap Screw	5/16-18 x 5/8"	2
128	TS-0720081	Lock Washer	5/16"	2
129	PR-EV-1980	Right Joint Plate		1
130	PR-EV-1990	Handle Bar		1
131	PR-EV-9210	Knob		1

# Welder, Shear and Work Lamp Assemblies (8014FW only)

