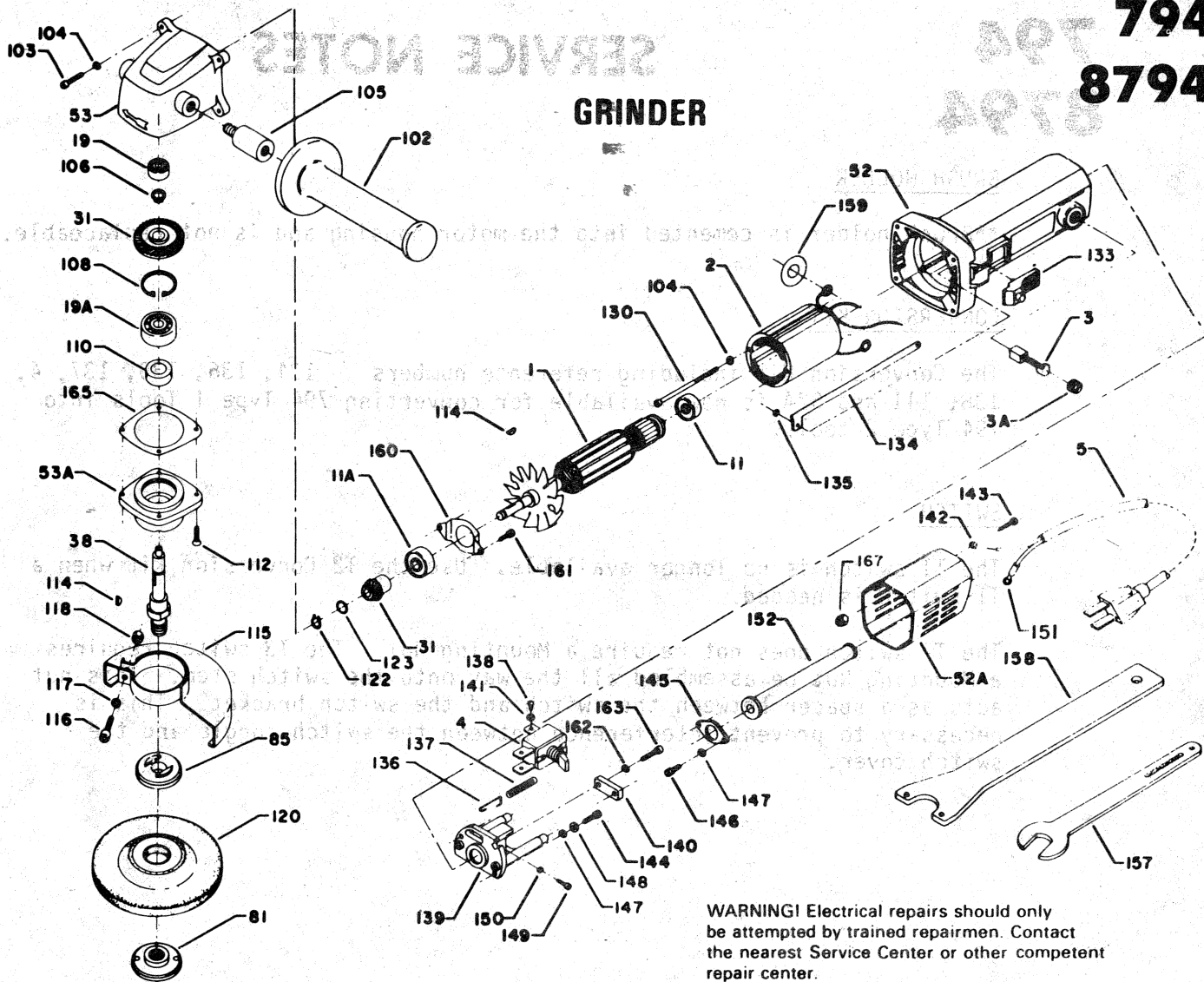


GRINDER



Ref. No.	Part Number	Description	Ref. No.	Part Number	Description	Ref. No.	Part Number	Description
1	1256629	Armature (115V)	104	1256503	Washer	141	1256697	Washer-T2,T3
	1256707	Armature (220V)	105	1256688	Spacer	142	1256503	Washer
2	1256690	Field Assembly	106	1256504	Snap Ring	143	1256534	Screw
	1256708	Field (220V)	108	1256506	Snap Ring	144	1256644	Screw
3	1256635	Brush (115V)	110	1256507	Seal	145	1256535	Retainer
	1256710	Brush (220V)	112	1256509	Screw	146	1256641	Screw
3A	1256636	Brush Cap	114	1256511	Key	147	1256503	Washer
4	1256701**	Switch-T3	115	1256618	Guard	148	1256645	Washer
	1256695**	Switch-T2	116	1256513	Bolt	149	1256648	Screw
5	865619	Cord (115V)	117	1256514	Washer	150	1256647	Washer
	1256596	Cord (220V)	118	1256515	Nut	151	849314	Terminal
11	1256522	Ball Bearing	120	53711	Abrasive Wheel	152	1256541	Strain Reliever
11A	855218	Ball Bearing	122	1256519	Snap Ring	157	1256544	Wrench
19	862895	Ball Bearing	123	1256520	Washer	158	1256620	Spanner Wrench
19A	855200	Ball Bearing	130	1256524	Screw	159	1256608	Insulator
31	1256505	Gear & Pinion Set	133	1256631	Knob	160	1256605	Bearing Retainer
38	1256627	Spindle	134	1256691	Switch Arm	161	1256606	Screw
52	1256633**	Motor Housing w/Brush Holder		1256632	Switch Arm -T2,T3	162	1256503	Washer
52A	1256698	Switch Cover-T2,T3	135	1256528	Snap Ring	163	1256502	Screw
	1256638	Switch Cover-T1	136 n	1256703	Hook-T3 Only	165	1256680	Shim
53	1256500	Gear Housing		1256692	Hook-T2 Only	167 n	1256704	Switch Locator -T3 Only
53A	1256508	Gear Housing Cover	137	1256694	Spring-T2,T3	*	1256700**	Conversion Kit
81	1256625	Spindle Nut	138	1256696	Screw-T2,T3	*	1256709	Capacitor (220V)
85	1256626	Back-up Pad	139 n	1256702	Bracket-T3	*	1256597	Grease
102	1256501	Auxiliary Handle		1256693	Bracket-T2			
103	1256502	Screw		1256637	Bracket-T1			
			140	1256533	Cord Clamp			

** See Service Notes

794 8794

SERVICE NOTES

BRUSH HOLDER

**Brush holder is cemented into the motor housing and is not replaceable.

CONVERSION KIT

The Conversion Kit including reference numbers 134, 136, 139, 137, 4, 138, 141 and 52A is now available for converting 794 Type 1 Tools into 794 Type 2 tools.

SWITCH

The T1 switch is no longer available. Use the T2 Conversion Kit when a T1 switch is needed.

The T2 switch does not require a Mounting Nut. The T3 switch requires a Mounting Nut be assembled all the way onto the switch stem. This nut acts as a spacer between the switch and the switch bracket. This is necessary to prevent interference between the switch toggle and the switch cover.