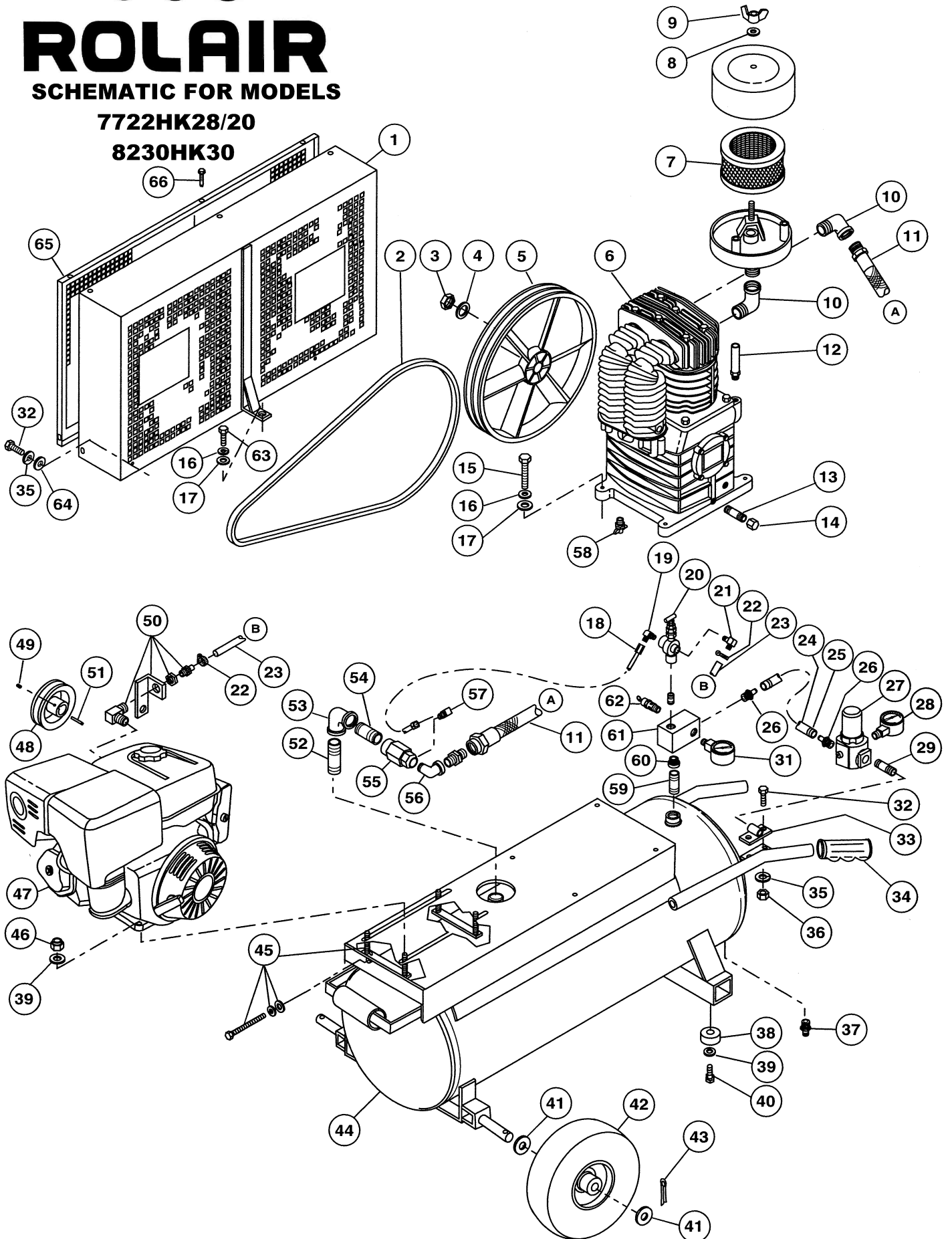


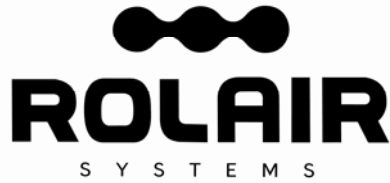
ROLAIR

SCHMATIC FOR MODELS

7722HK28/20

8230HK30






ROLAIR SYSTEMS

606 S. Lake Street, P.O. Box 346
 Hustisford Wisconsin 53034-0346
 Phone: 920-349-3281
 Sales Fax: 920.349.3691
 Service Fax: 920.349.8861
www.rolair.com

**PARTS LIST FOR MODELS
 7722HK28/20
 8230HK30**

Schem. #	Description	Part #	Qty.	Schem. #	Description	Part #	Qty.
1	Belt Guard Assembly	BG8422K30ASSY	1	35	Lock Washer	MIS10099	4
2	Belt	BTA63	2	36	Nut	MIS10020	2
3	Nut	37403780CH	1	37	Drain Valve	132BV	1
4	Washer	37502450CH	1	38	Rubber Foot	219	4
5	Flywheel	31003040CH	1	39	Washer	MIS10102	8
6	II Stage Pump w/ Flywheel-MDL 7722HK28/20	PMP22K28CH	1	40	Screw	MIS10008	4
	II Stage Pump less Flywheel- MDL 7722HK28/20	PMP22K28CHLF	1	41	Washer	MIS10104	6
	II Stage Pump w/ Flywheel- MDL 8230HK30	PMP22K30CH	1	42	Fully-Pneumatic Tire w/Sealant	WLS30SEAL	2
	II Stage Pump w/ Flywheel- MDL 8230HK30	PMP22K30CHLF	1	43	Cotter Pin	181B	2
7	Filter Element	431	1	44	20 Gallon Tank Assembly- ASME	TNKASY8230A	1
8	Washer	FSWASHER	1	45	Belt Tightener / Mounting Kit	SBT8HPH0&KAK30- ANGLE*	1
9	Wing Nut	FSNUT	1	46	Lock Nut	MIS10020B	4
10	Elbow	BLEL0750X90S	2	47	Honda Engine	ENG08H01	1
11	Braided Discharge Tube	145C	1		Std Oil Drain Extension Elbow	BREL0250X90	1
12	3/8" Breather/Oil Fill Plug	36507050CH	1		Nipple	BLNP0250X5000	1
13	Nipple	BLNP0250X1500	1		Cap	BLCA0250	1
14	Cap	BLCA0250	1		Optional Flexible Oil Drain Assy	HDE8	1
15	Bolt-MDL 7722HK28/20	MIS10043	1	48	Engine Pulley-MDL 7722HK28/20	PU2AK54X1000	1
	(7722HK28/20 pump mount bolts not shown)	MIS10027	3		Engine Pulley-MDL 8230HK30	PU2AK46X1000	1
	Bolt-MDL 8230HK30	MIS10043	4				
16	Lock Washer	MIS10100	8	49	Setscrew	MIS10020C	1
17	Washer	MIS10103	8	50	Throttle Control Assembly	192EGX240QA	1
18	1/4" Nylon Tubing - 30"	178D	2.5'	51	1/4" Keystock	MIS10096C	1
	Brass Nut	BRNT0250	2	52	Nipple-MDL 7722HK28/20	BLNP0500X2000	1
	Brass Ring	BRRG0250	2		Nipple-MDL 8230HK30	BLNP0500X4000	1
	Brass Sleeve	BRSLO250	2	53	Elbow	BLEL0500X90	1
19	Brass Elbow	BREL0250X025039	1	54	Nipple	BLNP0500X2000	1
20	Pilot Unloader Valve	131BIG	1	55	Check Valve	CV4X4L1	1
21	Brass Elbow	BREL0250X0125H16	1	56	Elbow	BREL0500X90S	1
22	Hose Clamp	177B	2	57	Brass Elbow	BREL0250X012539	1
23	1/4" Rubber Hose - 30"	178	2.5'	58	Drain Valve	132	1
24	3/8" Rubber Hose - 12"	178A	1'	59	Nipple	BLNP0375X2500	1
25	Hose Clamp	177A	2	60	Bushing	BLBS0500X0375	1
26	Brass Coupler	BRCPO375X0375H12	2	61	Aluminum Block Manifold	154	1
27	Regulator	REG0375	1				
28	Gauge	GA0250200GC	1	62	Safety Relief Valve	SRV0250A175	1
29	Nipple	BLNP0375X1500	1	63	Bolt	MIS10041	1
31	Gauge	GA0250300GC	1	64	Washer	MIS10108	2
32	Bolt	MIS10022	4	65	Belt Guard Cover	BG8423	1
33	Accessory Bracket	210	1	66	Bolt	MIS10094	5
34	Handle Grip	328	2				

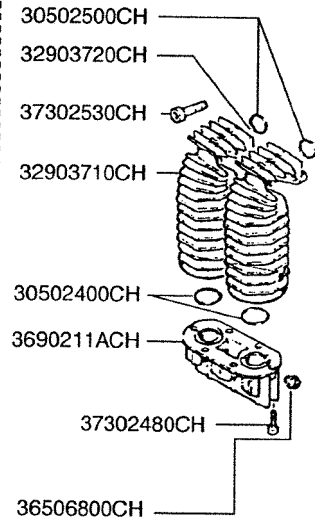
For units built prior to February 2005, order SBT8HPH0 & KAK30-SQUARE.



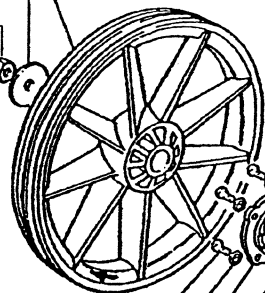
ROLAIR

SCHEMATIC FOR PMP22K28

PRODUCTION STARTING 2/00

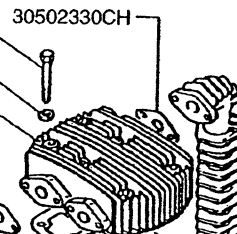
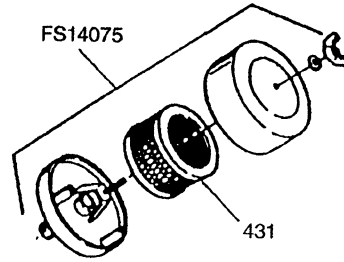


- 31004620CH
- 37500730CH
- 37400720CH



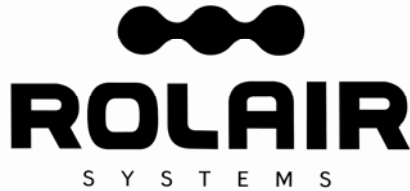
- 37301140CH
- 37508130CH
- 30400860CH
- 30500050CH
- 30300040CH
- 30300030CH

- 37308060CH
- 37502320CH
- 31302700CH
- 30502330CH
- 37302530CH
- 32902710CH
- 32902720CH
- 30502340CH
- 36902110CH
- 37302480CH
- 31204700CH
- 31204710CH
- 31204720CH
- 31206180CH
- 31204670CH
- 31102250CH
- 37300250CH
- 37500310CH
- 37400220CH
- 30204610CH
- 33104600CH



- 32902730CH
- 30502270CH
- 32708710CH
- 32700350CH
- 32703560CH
- 30508730CH
- 32708710CH
- 30508720CH
- 31608740CH
- 37301140CH
- 37508130CH
- 31208760CH
- 31208770CH
- 31208780CH
- 31208750CH
- 37602260CH
- 31208790CH
- 31100210CH
- 30504630CH
- 36507050CH
- 30509290CH
- 30300030CH
- 30500130CH
- 36500140CH
- 37301140CH
- 37508130CH
- 30400830CH
- 30500150CH

BLSQPL0250



ROLAIR SYSTEMS

606 S. Lake Street, P.O. Box 346
Hustisford Wisconsin 53034-0346
Phone: 920-349-3281
Sales Fax: 920.349.3691
Service Fax: 920.349.8861
www.rolair.com

PARTS LIST FOR PMP22K28

Description	Part #	Qty.	Description	Part #	Qty.
Crankshaft	30204610CH	1	Valve Plate	32708710CH	2
Bearing	30300030CH	2	Left Intercooler	32902710CH	1
Oil Seal	30300040CH	1	Right Intercooler	32902720CH	1
Bearing Carrier	30400830CH	1	Aftercooler	32902730CH	1
Bearing Carrier	30400860CH	1	Crankcase	33104600CH	1
Gasket	30500050CH	1	Sight Gauge	36500140CH	1
Gasket	30500130CH	1	3/8" Breather/Oil Fill Plug	36507050CH	1
Gasket	30500150CH	1	Connector	3690211ACH	1
O-Ring	30509290CH	1	Bolt	37300250CH	4
Gasket	30502270CH	1	Bolt	37301140CH	14
Gasket	30502330CH	3	Bolt	37302480CH	6
Gasket	30502340CH	2	Bolt	37302530CH	6
Gasket	30504630CH	1	Bolt	37308060CH	6
Gasket	30508720CH	1	Nut	37400220CH	4
Gasket	30508730CH	1	Nut	37400720CH	1
Flywheel	31004620CH	1	Washer	37500310CH	4
Bearing Shell	31100210CH	2	Washer	37500730CH	1
Bushing*	31102250CH	2	Washer	37508130CH	14
Connecting Rod Assembly	31104840CH1	2	Snap Ring	37602260CH	4
Piston Pin - HP	31204670CH	1	Plug	BLSQPL0250	1
Ring - HP	31204700CH	2	Silencer/Filter Assembly	FS14075	1
Ring - HP	31204710CH	1	Filter Element	431	1
Ring - HP	31204720CH	1	Ring Set	K28RINGS	1
Piston - HP	31206180CH	1	Gasket Set	K28GASKETS	1
Piston - LP	31208750CH	1	Valve Plate Assembly	2800VK28	1
Ring - LP	31208760CH	1	INTERCOOLER/AFTERCOOLER PARTS STARTING 12/99		
Ring - LP	31208770CH	1	O-Ring - Connector	30502400CH	2
Ring - LP	31208780CH	1	Plug	36506800CH	1
Piston Pin - LP	31208790CH	1	Connector	3690211ACH	1
Head	31302700CH	1	Bolt	37302480CH	6
Cylinder	31608740CH	1	Bolt	37302530CH	6
Valve - HP	32700350CH	2	O-Ring - Head	30502500CH	2
Valve - LP	32703560CH	4			

*Bushing is not machined to fit piston pin if ordered separate from connecting rod.