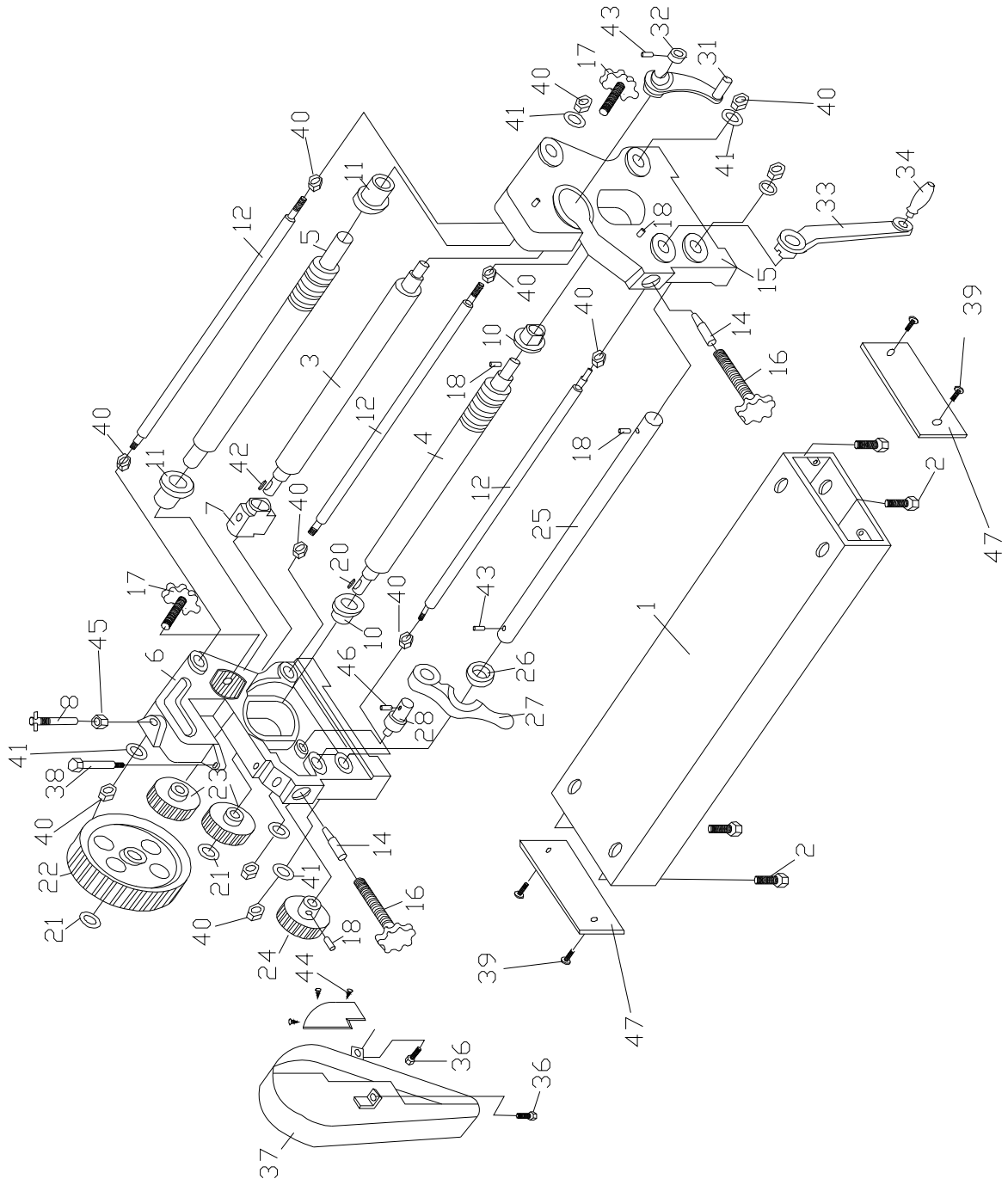


# Breakdown for the SR-1650M Slip Roll



## Parts List for the SR-1650M Slip Roll

Index No.	Part No.	Description	Size	Quantity
1.....	SR1650N-1 .....	Base Assembly.....		1
2.....	SR1650N-2 .....	Hex Cap Screw .....	M16x25.....	4
3.....	SR1650N-3 .....	Upper Roll .....		1
4.....	SR1650N-4 .....	Lower Roll .....		1
5.....	SR1650N-5 .....	Rear Roll .....		1
6.....	SR1650N-6 .....	Left Support.....		1
7.....	SR1650N-7 .....	Left Upper Roll Seat .....		1
8.....	SR1650N-8 .....	Set Rod Assembly.....		1
10.....	SR1650N-10 .....	Bushing .....		2
11.....	SR1650N-11 .....	Bushing .....		2
12.....	SR1650N-12 .....	Set Rod .....		3
14.....	SR1650N-14 .....	Pin.....		2
15.....	SR1650N-15 .....	Right Support .....		1
16.....	SR1650N-16 .....	Knob .....		2
17.....	SR1650N-17 .....	Knob .....		2
18.....	SR1650N-18 .....	Spring Pin.....	5x40.....	5
20.....	SR1650N-20 .....	Key.....	8x8x30.....	2
21.....	SR1650N-21 .....	C-Ring.....	28 .....	2
22.....	SR1650N-22 .....	Gear.....		1
23.....	SR1650N-23 .....	Gear.....		2
24.....	SR1650N-24 .....	Gear.....		1
25.....	SR1650N-25 .....	Rod .....		1
26.....	SR1650N-26 .....	Bushing .....		1
27.....	SR1650N-27 .....	Stop .....		1
28.....	SR1650N-28 .....	Shaft Assembly .....		1
31.....	SR1650N-31 .....	Clamp Handle.....		1
32.....	SR1650N-32 .....	Bushing .....		1
33.....	SR1650N-33 .....	Arm .....		1
34.....	SR1650N-34 .....	Handle.....		1
36.....	SR1650N-36 .....	Hex Cap Screw .....	M8x20.....	2
37.....	SR1650N-37 .....	Gear Cover Assembly.....		1
38.....	SR1650N-38 .....	Hex Socket Bolt.....	M12x130.....	1
39.....	SR1650N-39 .....	Flat Head Screw.....	M4x5.....	4
40.....	SR1650N-40 .....	Hex Nut .....	M16 .....	12
41.....	SR1650N-41 .....	Washer.....	M16 .....	6
42.....	SR1650N-42 .....	Key.....	8x8x60.....	1
43.....	SR1650N-43 .....	Set Screw.....	M8x10.....	1
44.....	SR1650N-44 .....	Tapping Screw .....	ST4.3x9 .....	8
45.....	SR1650N-45 .....	Hex Nut .....	M20 .....	1
46.....	SR1650N-46 .....	Cotter Pin .....	3.2x30.....	1
47.....	SR1650N-47 .....	Plate.....		2
.....	SR1650M-ID .....	ID Label (not shown).....		1
.....	SR1650N-W.....	Warning Label (not shown) .....		1
.....	SR1650N-J .....	JET Label (not shown).....		1