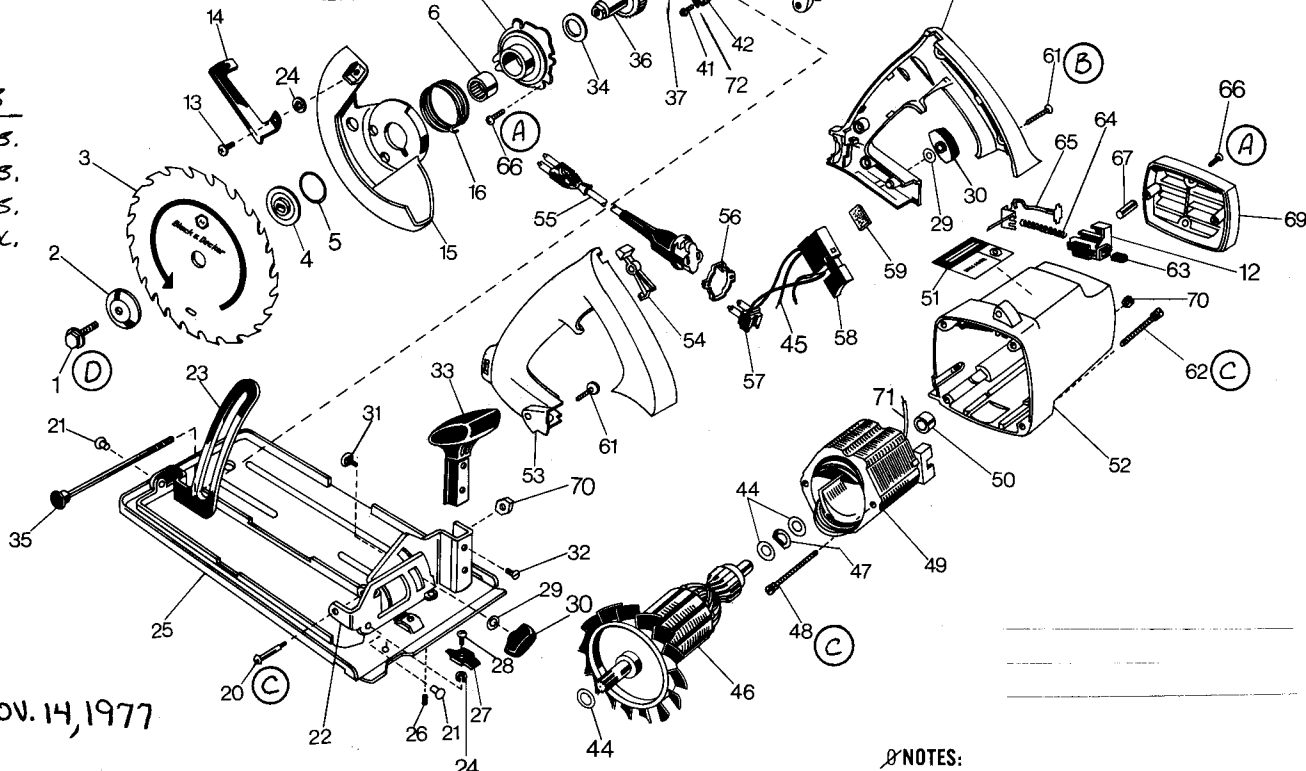


TORQUE SPECS

- A. 20-25 in. lbs.
- B. 15-20 in. lbs.
- C. 15-22 in. lbs.
- D. 5 in. lbs. max.



UNIT DISCONTINUED NOV. 14, 1977

Item No.	Part No.	Description	Qty.	Item No.	Part No.	Description	Qty.
1	87155	Hex Bolt 5/16-24 x 1"	1	46	87133-31	Armature & Fan (120V)	1
2	87166	Outer Blade Clamp	1	47	54831	Spring Washer	1
3	73-007	Combination Blade	1	48	99446-42	10-32 x 2 3/8 Mach. Screw	2
4	87165	Inner Blade Clamp	1	49	87135-71	Field (120V) (Incl. 71)	1
5	87180	Retaining Ring	1	50	87151	Sleeve Bearing 679133	1
6	70473	Roller Bearing	1	51	91645-01	Nameplate	1
8	89523	Thrust Washer	1	52	87208	Field Case (Incl. 50, 51)	1
12	87178-07	Brush Holder	2	53	87113	Handle, Assy. Half	1
13	69294	8-32 x 7/16 Self Tap Screw	1	54	87119-01	Lock-Off Button	1
14	87171	Guard Lever	1	55	87337	Cord & Plug	1
15	87124	Lower Guard 92840	1	56	87484-01	Lock Ring (120V)	1
16	90868	Lower Guard Spring	1	57	87344-02	Plug (120V)	1
18	87162	Gear Case Cover 87131	1	58	87105-01	Switch	1
20	91520	10-32 Shoulder Screw	1	59	71902-01	Rubber Pad	1
21	72356	Rivet	2	60	87114	Handle, Cover Half	1
22	87198-02	Pivot Bracket	1	61	87184	8-16 x 15/16 Self Tap Screw	5
23	87176	Adjusting Strap	1	62	87182	10-32 x 2-7/16 Self Tap	1
24	33985	Lockwasher	2		142881-00	Screw	4
25	87146-01	Shoe & Brackets (Incl. 21, 22, 23)	1	63	66678-01	Brush	2
26	87149	8-32 Set Screw	1	64	70077	Brush Spring	2
27	87177	Pointer	1	65	87141	Brush Lead	2
28	99262-04	8-32 x 1/4" Sems Screw	1	66	87181	8-32 x 9/16 Self Tap Screw	6
29	80453	Flat Washer	2	67	87205	Plug	2
30	60995	Knob	2	69	87108	End Cap	1
31	38910	1/4-20 x 1/2 Carriage Bolt	1	70	33011	10-32 Hex Lock Nut	3
32	87187	8-16 x 3/4 Self Tap Screw	2	71	87143	Lead (Red)	1
33	87150	Knob	1	72	39340	Flat Washer	1
34	87167-01	Thrust Washer	1				
35	87139	1/4-20 x 4" Carriage Bolt	1				
36	87137-01	Spindle & Gear	1				
37	89801	Sleeve Bearing 144494-00	1				
38	87196	Identification Sticker	1				
39	87129-09	Gear Case & Brg (Incl. 440806 Inst. Sht. 37, 38, 40)	1				
40	87154	Roller Bearing	1				
41	87204	10-32 x 3/4 Self Tap Screw	1				
42	94210	Bumper 130873, 130935	1				
43	87106	Baffle	1				
44	87212	Fibre Washer	3				
45	87142	Lead (Black)	1				

NOTES:

- 5 Dip ring in light oil (SAE 10 or 20) prior to assembly
- 27 Wide end of pointer to face forward & down
- 40 Press bearing to .020 raised
- 43 Be sure baffle is oriented as shown and properly seated in field case before assembling to gear case
- 59 Adhesive side toward handle cover (Item 60) and positioned toward back of handle cover
- 44 Soak fibre washers in Cindol #1724 Oil prior to assembly
- 47 Convex side to face bearing
- 50 Press bearing to .022 raised
- 56 Note pin orientation

LUBRICATION:

3/8 oz. H. D. Grease (ML54-1)



IMPORTANT!—To assure product SAFETY and RELIABILITY, repairs, maintenance and adjustment should be performed by BLACK & DECKER Service Centers or other qualified service organizations, always using BLACK & DECKER replacement parts.

WHEN ORDERING REPLACEMENT PARTS YOU MUST GIVE UNIT, TYPE AND CATALOG NUMBER AS SHOWN ON NAMEPLATE, PLUS PART NUMBER AND NAME OF PART NEEDED.

No. 7334 DOUBLE INSULATED 7 1/4" CIRCULAR SAW

Cat. No.	Volts	Type	Amps.	RPM
7334	120	1	10.0	5300
7334-01	220	1	5.5	5300

The Black & Decker Mfg. Co.
Towson, Maryland 21204

Printed in U.S.A. **BULLETIN NO. 8136-1**

COPYRIGHT© 2005. All Rights Reserved.

Parts list, pricing, and availability subject to change. Please visit www.dewaltservicenet.com for current parts information.