

Type:
Part no.:

KBM 52 U (60Hz,120V)
72703109366



Item	Part no.	Designation	Quantity	Price RPR excl. VAT (USD)	AT
0010	31901136019	Motor housing	1	on req.	-
0020	51273004110	Stator	1	on req.	-
0030	31428118007	Air guide ring	1	on req.	-
0040	53273007113	Armature 50/60Hz110-120V Z=6	1	on req.	-
0050	41701001172	Grooved ball bearing	1	on req.	-
0060	32416098005	Plate	1	on req.	-
0070	41701007050	Grooved ball bearing	1	on req.	-
0080	32612124006	Sealing ring	1	on req.	-
0090	31506365008	Intermediate bearing	1	on req.	-
0100	41701204010	Grooved ball bearing	3	on req.	-
0110	40608077000	Sealing ring	1	on req.	-
0120	32805187009	Cap	1	on req.	-
0130	42639028003	Sealing ring	1	on req.	-
0140	43070005005	Screw	4	on req.	-
0145	40611007008	Sealing ring	4	on req.	-
0150	31406053007	Sleeve	1	on req.	-
0160	32172010005	Ring magnet	1	on req.	-
0170	30762259017	Electronics	1	on req.	-
0180	30712088029	Brush holder	2	on req.	-
0181	30711136002	Carbon brush	2	on req.	-
0190	43070018009	Screw	2	on req.	-
0200	31201121006	Cover	1	on req.	-
0210	31414061020	Cable with protective hose 120V	1	on req.	-
0211	31414061002	Protective hose	1	on req.	-
0217	30723054002	Screw connection	2	on req.	-
0218	40612115003	Sealing ring	2	on req.	-
0220	43070012008	Screw	2	on req.	-
0230	31508256004	Gearbox housing	1	on req.	-
0235	40201035003	Straight pin	2	on req.	-
0240	41701010010	Grooved ball bearing	1	on req.	-
0250	41701025051	Grooved ball bearing	1	on req.	-
0255	42616015003	Circlip	1	on req.	-
0260	40608069001	Sealing ring	2	on req.	-
0270	42616074003	Circlip	2	on req.	-
0280	33403110000	Shaft MK3	1	on req.	-
0285	33403110010	Shaft Umbausatz / repair kit	1	on req.	-
0290	40221040006	Feather key	1	on req.	-
0300	33665055005	Gear-wheel Z=51	1	on req.	-
0310	42616009003	Circlip	1	on req.	-
0315	41701012012	Grooved ball bearing	1	on req.	-
0320	33765019007	Shaft, toothed Z=13	1	on req.	-
0330	40221067009	Feather key	1	on req.	-
0340	33613128002	Gear-wheel Z=35	1	on req.	-
0350	33613127004	Gear-wheel Z=43	1	on req.	-
0360	42616007001	Circlip	1	on req.	-
0370	33811068002	Shaft, toothed Z=21/13	1	on req.	-
0380	33657169005	Gear-wheel Z=49	1	on req.	-
0390	32805189001	Switch pushbutton	1	on req.	-
0400	40612115003	Sealing ring	1	on req.	-

Type:
Part no.:

KBM 52 U (60Hz,120V)
72703109366



Item	Part no.	Designation	Quantity	Price RPR excl. VAT (USD)	AT
0410	40242062002	Straight pin	1	on req.	-
0420	30905059009	Cup spring	1	on req.	-
0430	42616016006	Circlip	1	on req.	-
0440	42443004057	Circlip M5	4	on req.	-
0450	43035073052	Cylinder head screw M5X16	4	on req.	-
0460	41138025006	Hose socket	1	on req.	-
0470	43002120055	Cylinder head screw	1	on req.	-
0480	30217347001	Bolt	1	on req.	-
0490	42401019085	Disc	1	on req.	-
0500	32170018005	Lever	1	on req.	-
0700	31207275020	Housing	1	on req.	-
0702	31602081001	Bush	1	on req.	-
0703	31602092003	Bush	1	on req.	-
0710	33216047000	Pressure piece	1	on req.	-
0720	33218117000	Guide strip	2	on req.	-
0730	43035076041	Cylinder head screw M4X16	6	on req.	-
0740	30904041001	Leaf spring	1	on req.	-
0750	43041026994	Fillister head screw	1	on req.	-
0760	43058008051	Set screw	3	on req.	-
0770	42443004057	Circlip M5	6	on req.	-
0780	33812007004	Gear rack	1	on req.	-
0790	43035017057	Cylinder head screw M5X20	2	on req.	-
0800	33218118008	Guide	1	on req.	-
0810	43013048041	Flat headed screw	2	on req.	-
0820	33713068008	Shaft	1	on req.	-
0830	33213008009	Scale	1	on req.	-
0840	32119114014	Handle	3	on req.	-
0850	42401019085	Disc	2	on req.	-
0860	30905055000	Cup spring	2	on req.	-
0870	42019006080	Nut	1	on req.	-
0880	33216049002	Magnetic foot	1	on req.	-
0890	43035097059	Cylinder head screw	4	on req.	-
0905	30707333018	Cable with plug	1	on req.	-
0910	31413007007	Cable grommet	1	on req.	-
0920	30723044003	Screw connection	1	on req.	-
0930	30610034008	Seal	1	on req.	-
0940	32422317010	Plate	1	on req.	-
0950	31408086007	Plate	1	on req.	-
0960	30723043005	Nut	1	on req.	-
0970	30701281000	Switch	1	on req.	-
0972	30719647010	Connecting cable	2	on req.	-
0973	31412063000	Terminal	2	on req.	-
0975	30701281010	Switch Umbausatz / repair kit	1	on req.	-
0990	30762274990	Electronics	1	on req.	-
1000	30719614010	Connecting cable	2	on req.	-
1010	30701267010	Button	1	on req.	-
1015	30701264010	Button	1	on req.	-
1017	30610045000	Seal	1	on req.	-
1020	42404005048	Disc	2	on req.	-
1030	42439013046	Lock washer	1	on req.	-

Type:
Part no.:

KBM 52 U (60Hz,120V)
72703109366

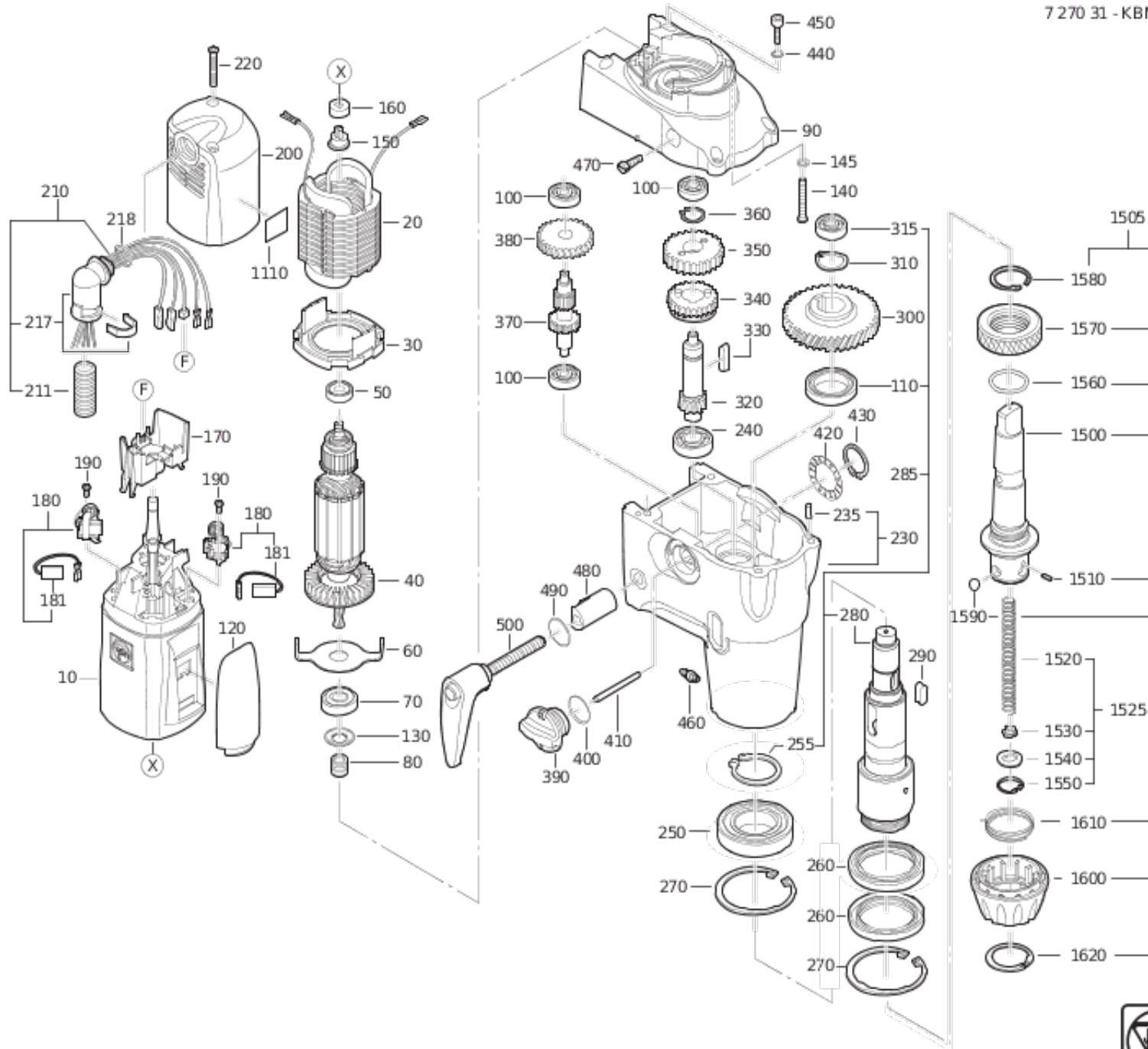


Item	Part no.	Designation	Quantity	Price RPR excl. VAT (USD)	AT
1050	32429136010	Cover	1	on req.	-
1060	30610044000	Seal	1	on req.	-
1070	30723055006	Nut	1	on req.	-
1075	30234026008	Cable tie	1	on req.	-
1080	43064023045	Fillister head screw	8	on req.	-
1110	32217406002	Information sign	1	on req.	-
1500	33401090001	Shaft	1	on req.	-
1505	63901017011	QuickIN-adaptors	1	on req.	-
1510	40238065002	Clamping sleeve	1	on req.	-
1520	30901341000	Spiral spring	1	on req.	-
1525	30901341019	Spiral spring	1	on req.	-
1530	30503145006	Sleeve	1	on req.	-
1540	32408389000	Disc	1	on req.	-
1550	42616075007	Circlip	1	on req.	-
1560	40612073006	Sealing ring	1	on req.	-
1570	42015067006	Nut	1	on req.	-
1580	42643016008	Circlip	1	on req.	-
1590	41708025004	Ball	4	on req.	-
1600	30232045005	Clamping sleeve	1	on req.	-
1610	30907063003	Spiral spring	1	on req.	-
1620	42643009005	Circlip	1	on req.	-
5000	33901127020	Tool box ass.	1	on req.	-
5010	63901036010	Gravity-fed cooling lubricant unit.	1	on req.	-
5015	43026028049	Knurled screw	1	on req.	-
5020	31414054008	Replacement hose	1	on req.	-
5040	64201001000	Hook f. chip removal	1	on req.	-
5050	32174008007	Lashing strap	1	on req.	-
5060	63305003003	Drift keys	1	on req.	-
5080	30217332009	Centering pins	1	on req.	-
5095	30217355000	Centering pins	1	on req.	-
5100	63901021014	QuickIN-adaptor	1	on req.	-
5110	30217337002	Centering pins	1	on req.	-
5120	30217338000	Centering pins	1	on req.	-
5130	63901023002	QuickIN-adaptor	1	on req.	-
5135	43041008045	Fillister head screw	4	on req.	-
5140	63901037010	Contact and swarf protection	1	on req.	-
5170	63901024019	QuickIN-adaptor	1	on req.	-
5200	63202037010	Key-type drill chucks	1	on req.	-
5205	62914004007	Chuck key	1	on req.	-
5210	30232050000	Wire clamp	2	on req.	-
5220	63901023011	Key-type drill chuck with QuickIN holder	1	on req.	-
6000	32132007189	Lubricant can 0,850 kg	1	on req.	-
9000	34101063060	Operating instructions	1	on req.	-
9010	34151063000	List of spare parts KBM 52U	1	on req.	-
9020	34130054061	Safety instruction	1	on req.	-

Type:
Part no.:

KBM 52 U (60Hz,120V)
72703109366

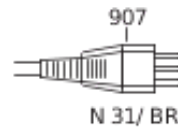
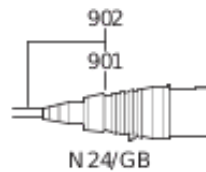
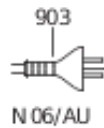
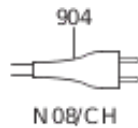
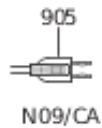
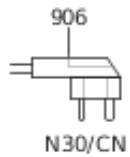
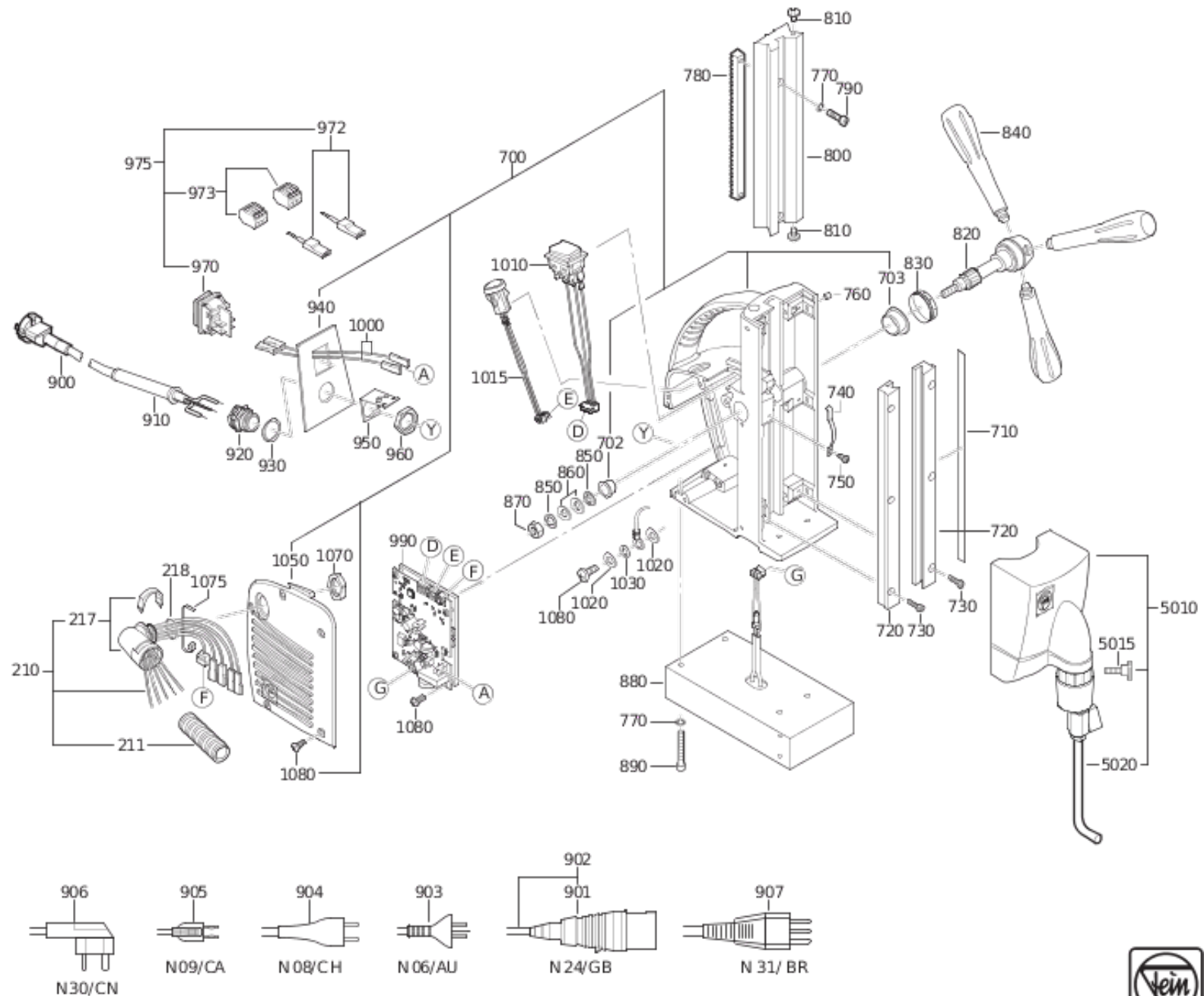
7 270 31 - KBM52 U



Type:
Part no.:

KBM 52 U (60Hz,120V)
72703109366

7 270 31 - KBM 52 U



Type:
Part no.:

KBM 52 U (60Hz,120V)
72703109366

7 270 31 - KBM52 U

