

725KM

TENSION SHAFT/YOKE ASSEMBLY (103A)

Early versions - yoke (113) is held onto tension shaft (103) by a snap ring (114). Current version - yoke and tension shaft are serviced as an assembly (103A). This assembly may be used to service early versions.

YOKE NO. 803600

Some early type yokes did not have the stop formed in them as the current types do. When replacing the current tension shaft on a machine that has an early type yoke, replacement of the yoke is necessary.

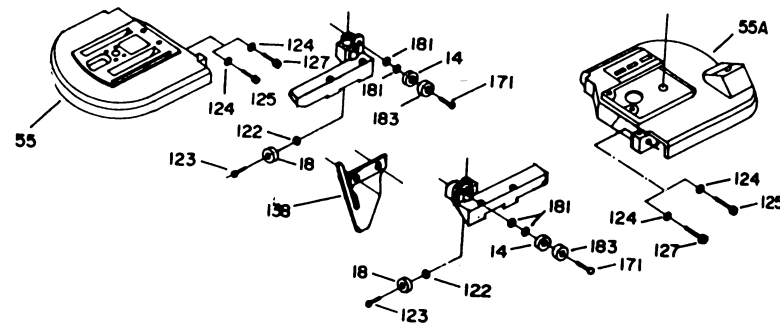
HARDWARE KIT

Hardware Kit includes the following reference numbers for use when complete tear down is required: 3, 3A, 22, 24, 108, 109, 112, 115, 116, 117, 118, 121, 122, 123, 124, 125, 127, 129, 134, 141, 142, 145, 152, 153, 154, 157, 159, 161, 162, 166, 167, 168, 171, 173, 181, 183, 190.

PULLEY HOUSINGS AND BLADE GUIDES TYPE 1

Listed below are the parts used only on Type 1 units.

Ref. No.	Part No.	Description	Ref. No.	Part No.	Description
14	855196	Guide Outer Brg.	125	804309	Short Mtg. Screw
18	855195	Guide Inner Brg.	127	802688	Long Mtg. Screw
55	852700	Front Pulley Hsg.	138	804562	Guide Stop
55A	852680	Rear Pulley Hsg.	171	691679	Bearing Screw
62	863417	Front Blade Guide	181	863703	Washer
62A	863418	Rear Blade Guide	183	863569	Roller Guide
122	802606	Bearing Washer	n	694979	Guide Hardware Kit T1
123	802603	Screw			Incl. Ref. 14, 18, 122,
124	802417	Lock Washer			123, 171, 181, 183



PULLEY SHAFT SCREWS REF. #121

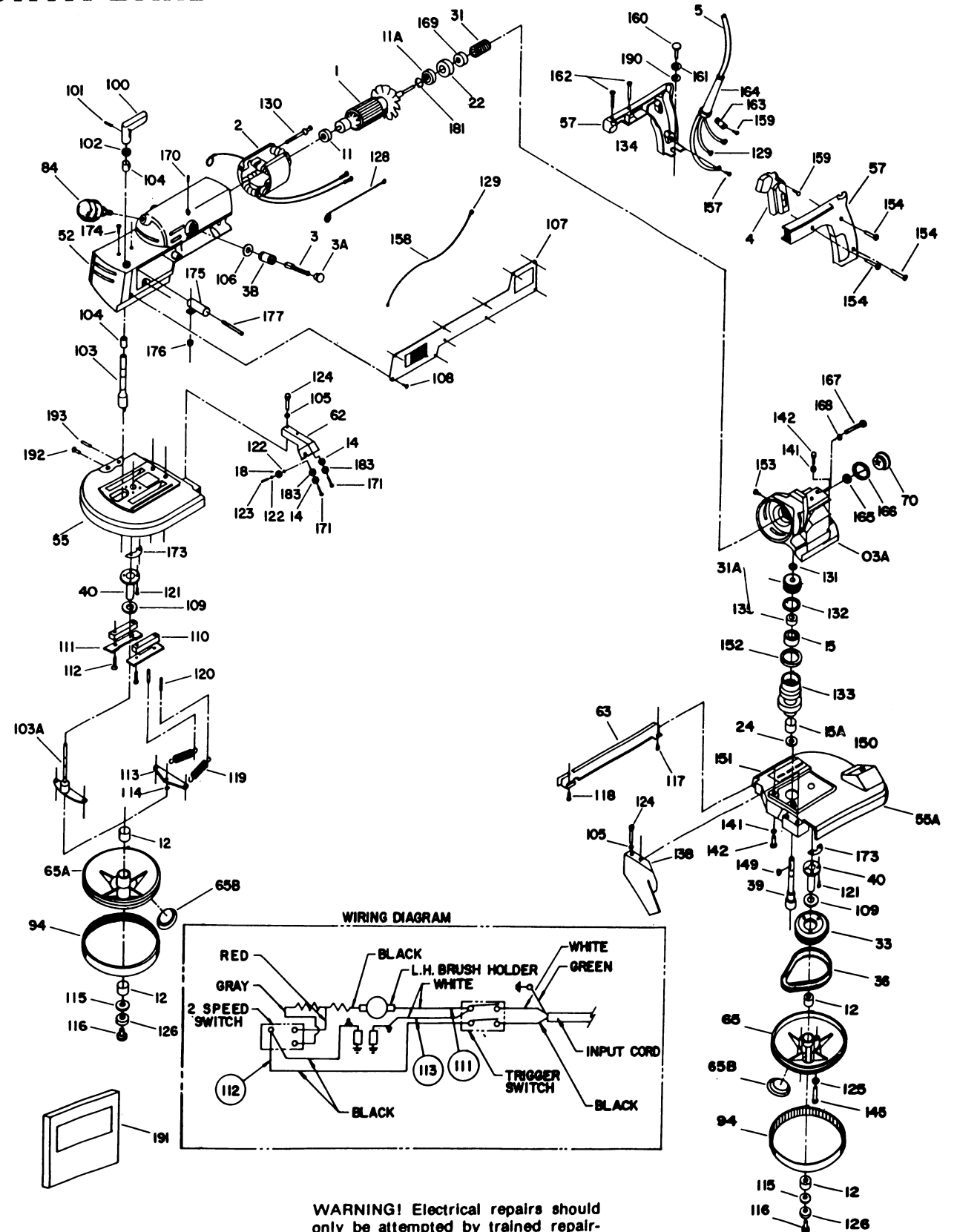
The countersinks of the pulley shaft (803458) mounting holes have been increased to accept the larger head of a self tapping screw (845619). Current Type 2 pulley housings use self tapping screws while Type 1 and early Type 2 used machined screws. The current self tapping screw cannot be used with early pulley shaft because of its larger head. Early machine screw (802836) is still available and can be used with current pulley housing and shaft, provided you tap the (4) mounting holes with an 8-32 thread through the housing.

ARMATURE SHAFT SEAL

On Types 1 & 2, the positions of the armature shaft seal Ref. 22 and armature bearing Ref. 11A are reversed from what is pictured for Type 3 Models.

PORTER-CABLE PORTA-BAND

725KM



WARNING! Electrical repairs should only be attempted by trained repairmen. Contact the nearest Porter-Cable Service Center or other competent repair center.

PARTS LIST NO. 692275 - 1911

Copyright © 1991 PORTER-CABLE Corporation

PORTER-CABLE
PROFESSIONAL POWER TOOLS

725KM

725KM

Ref. No.	Part No.	Description
1	692116	Armature T3
	861005	Armature T1, T2
2	861007	Field T1, T2, T3
3	859179	Brush
3A	801538	Brush Cap
3B	801519	Brush Holder
4	864459	Switch (Plastic Handles)
	843156	Switch (Metal Handles)
5	802787	Cord 115V
	849465	Cord 220V (725)
11 n	855284	Commutator Bearing
11A	855193**	Fan Bearing
12	803858	Pulley Bearing
14	855196	Guide Outer Bearing
15	855193	Upper Shaft Bearing
15A	803856	Lower Shaft Bearing
18	855195	Guide Inner Bearing
22	691809	Armature Shaft Seal T3
	802601**	Armature Shaft Seal T1, T2
24	802600	Jackshaft Seal
31	692100	Worm T3
	841698	Worm T1, T2
31A	691722	Worm Gear T3
	841699	Worm Gear T1, T2
33	802375	Driven Sprocket
36	802524	Chain
39	691723	Jackshaft
	802265	Jackshaft, T1, T2
40	803458	Pulley Shaft
52	857835	Motor Housing
52A	692037	Gear Housing T3
	852682	Gear Housing T1, T2
55	865223**	Front Pulley Hsg. T2, T3
55A	865226**	Rear Pulley Hsg. T2, T3
57	864707	Handle Set Incl: Ref. 134, 154, 159, 163, 164
62	861799	Blade Guide T2, T3
	867950	Blade Guide Assy. T2, T3 Incl: Ref. 14, 18, 62, 105, 122, 123, 124, 171, 183
	694978	Blade Guide Hardware T2, T3 Incl: Ref. 14, 18, 105, 122, 123, 124, 171, 183
63	853328	Blade Guard
65	844866	Drive Pulley
65A	844867	Driven Pulley
65B	692987	Caplug, T3
70	804167	Plug
84	839279	Knob
94	844868	Tire
100	853327	Tension Knob
101	802329	Pin
102	803745	Washer
103	803611**	Tension Shaft (Early)
103A	694988**	Tension Shaft/Yoke Assy. (Current)
104	803390**	Bushing (Early Models Only)
105 n	802429	Lockwasher
106	802223	Brush Holder Washer
107	851357	Spec Plate w/ Switch
108	858008	Plate Screw
109	803679	Shaft Washer
110	803254	Slide Key
111	801135	Block Plate
112	802598	Plate Screw
113	803600**	Yoke (Early)
114	802099**	Yoke Ring (Early)
115	803435	Pulley Washer
116	847213	Pulley Screw

Ref. No.	Part No.	Description
117	844009	Self Tapping Screw (Current)
	803338	Machine Screw (Early)
118	804547	Front Guard Screw
119	804389	Tension Spring
120	867693	Spring Stud T2, T3
	803575	Spring Stud T1
121	845619**	Self-Tapping Screw Current T2, T3
	802836**	Mach. Screw (T1, Early T2)
122	861664	Washer T2, T3
123	861663	Pin T2, T3
124	866061	Screw T2, T3
125	802417	Washer
126	863134	Pulley Washer
128	803105	Brush/Switch Lead
129	849314	Terminal
130	838312	Field Screw
131	805011	Gear Ret. Ring, T3
	804301	Gear Nut T1, T2
132	802302	Lock Ring
133	802897	Jackshaft Carrier
134	803637	Nut
135	691721	Spacer T3
138	858932**	Guide Stop T2, T3
141	802687	Lockwasher
142	802602	Housing Screw
145	826020	Drive Pulley Screw
149	804424	Jackshaft Key
150	847090	Blade Chart T1, T2
151	801896	Chart Screw T1, T2
152	803665	O-Ring
153	846744	Carrier Screw
154	860220	Cover Screw
157	802764	Ground Screw T3
	844107	Ground Screw T1, T2
158	841693	Switch/Select. Lead
159	852211	Screw
160	802158	Handle Bolt
161	801377	Handle Washer
162	687960	Handle Top Screw T3
	844296	Handle Top Screw T1, T2
163	861434	Cord Clamp
164	810716	Reliever
165	801372	Worm Nut
166	804177	Plug Gasket
167	838733	Housing Screw
168	803017	Lockwasher
169	804214	Oil Slinger T1, T2 (Only)
170	802200	Brush Holder Screw
171	691679	Self Tapping Screw (Current)
	863401	Machine Screw (Early)
173	853338	Shim - .0035 (As required)
	692203	Shim - .0075 (As required)
174	804358	Screw
175	690819**	Capacitor (2 req'd)
176	803112	Nut/Washer Assy.
177	868589	Insulation Tube
181 n	844571	Snap Ring, T3
183	863569	Roller Guide
190	801821	Washer
191	867349**	Hardware Kit
192	858008	Screw (Current Version Only)
193	801710	Wear Pin (Current Version Only)
*	803105	Field Lead
*	844607	Armature Fan T1, T2
*	847976	Armature Fan T3
*	803442	Gear Lubricant - 5 1/2 oz. (1.5 oz. req'd.)
	803443	Gear Lubricant - 1 gal.

**See Service Notes

SERVICE NOTES

WARNING TO THE OPERATOR OF THIS TOOL - A class 1 radio suppression system is built into this tool. UNLESS THIS TOOL IS PROPERLY GROUNDED BEFORE AND DURING USE, THE OPERATOR WILL RECEIVE AN ELECTRIC SHOCK.

WARNING! To avoid possible electric shock while transferring tool from one location to another or before making repairs or servicing tool in any way: (1) Remove cord plug from power circuit outlet. Do not touch current-carrying prongs on the plug. (2) With switch in the "ON" position, touch one and then the other current-carrying prong to one of the screw heads in the tool housing to discharge the filters.

WARNING! After repairs to the tool, to avoid damage to the filter, wire leads to filter must be left DISCONNECTED until completion of dielectric test. After connecting filter in the circuit, check filter for leakage. A suggested method is to shunt the terminals of a good quality A.C.V.T.V.M. with a 500 ohm, 10 watt resistor. Then, with tool running, keep one test prod in contact with one of the screw heads in the tool housing while one side of the line is contacted with the other test prod. Record V.T.V.M. voltage reading. Now, contact the other side of the line and record the V.T.V.M. voltage reading. Calculate leakage current by dividing the V.T.V.M. reading by 500. If leakage current on either side of the line exceeds 5 milliamperes, the filter must be replaced. CAUTION! MAKE SURE TOOL HOUSING AND V.T.V.M. ARE NOT GROUNDED DURING TEST.

CAPACITOR (Filter)

Early units used one "two pole" capacitor. Current units use two "single pole" capacitors.

Two of the current "single pole" capacitors may be used to replace a "two pole" capacitor.

TENSION SHAFT (103)

Currently produced models incorporate a larger diameter shaft which eliminates the use of #803390 (104) Bushing. The early type shaft can be used in the current housing by inserting two bushings, #803390 (104), into the motor housing. The current type shaft can be used in the early type housing by removing the two #803390 (104) bushings. The current motor housing will be supplied without bushings.