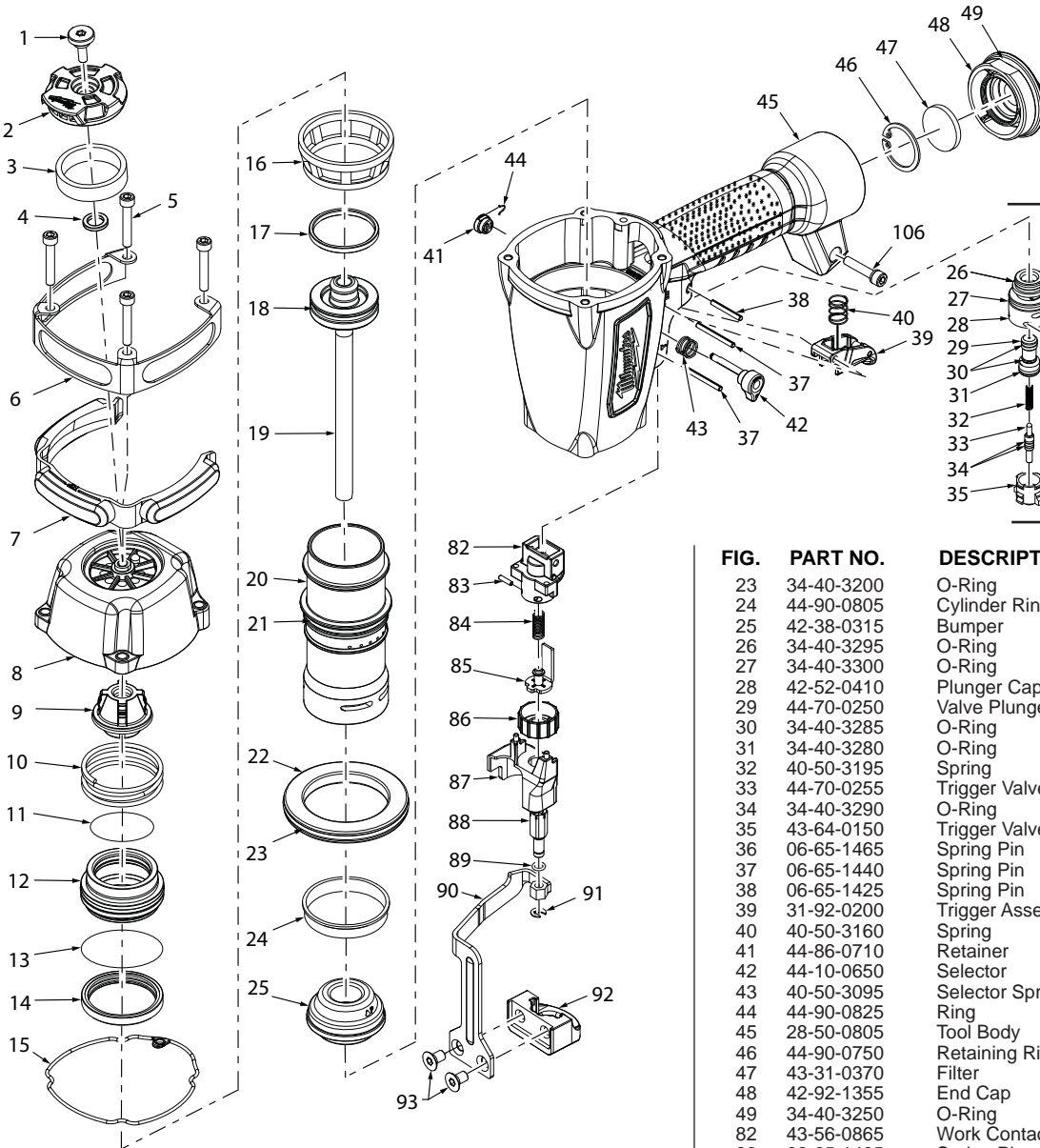




SERVICE PARTS LIST

BULLETIN NO.
54-43-0035

SPECIFY CATALOG NO. AND SERIAL NO. WHEN ORDERING PARTS		REVISED BULLETIN	DATE
COIL ROOFING NAILER			Oct. 2015
CATALOG NO. 7220-21	STARTING SERIAL NUMBER	G99A	
		WIRING INSTRUCTION	

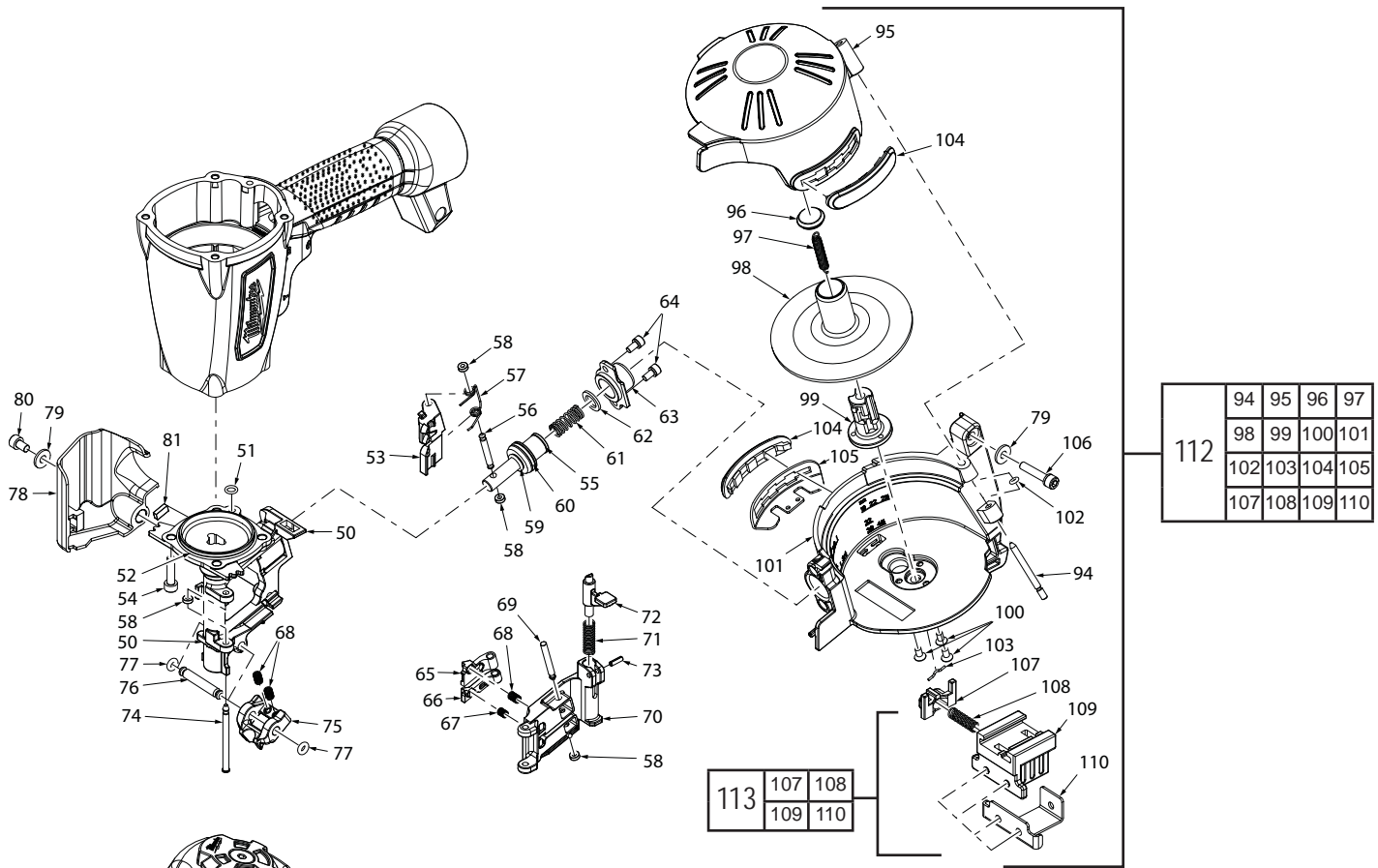


EXAMPLE:
Component Parts
(Small #) Are Included
When Ordering The
Assembly (Large #).

111	26	27	28	29	30	31
	32	33	34	35	36	44

FIG.	PART NO.	DESCRIPTION OF PART	NO. REQ.
1	05-84-0805	Deflector Bolt	1
2	31-05-0400	Deflector	1
3	43-31-0355	Muffler	1
4	45-88-1720	Deflector Pad	1
5	05-84-0925	Socket Hex Head Screw	5
6	44-66-1355	Wear Plate	1
7	42-38-0370	Wear Pad	1
8	42-92-1425	Top Cap	1
9	45-06-0945	Seal	1
10	40-50-3120	Upper Valve Spring	1
11	34-40-3195	O-Ring	1
12	44-62-0265	Head Valve Piston	1
13	34-40-3245	O-Ring	1
14	42-76-0815	Valve Collar	1
15	45-06-0915	Seal	1
16	44-90-0700	Press Ring	1
17	44-90-0730	Piston Ring	1
18	34-40-3180	O-Ring	1
19	43-12-0255	Driver Assembly	1
20	42-98-0355	Cylinder	1
21	34-40-3135	O-Ring	1
22	45-36-1655	Cylinder Spacer	1

FIG.	PART NO.	DESCRIPTION OF PART	NO. REQ.
23	34-40-3200	O-Ring	1
24	44-90-0805	Cylinder Ring	1
25	42-38-0315	Bumper	1
26	34-40-3295	O-Ring	1
27	34-40-3300	O-Ring	1
28	42-52-0410	Plunger Cap	1
29	44-70-0250	Valve Plunger	1
30	34-40-3285	O-Ring	2
31	34-40-3280	O-Ring	1
32	40-50-3195	Spring	1
33	44-70-0255	Trigger Valve Plunger	1
34	34-40-3290	O-Ring	2
35	43-64-0150	Trigger Valve Head	1
36	06-65-1465	Spring Pin	2
37	06-65-1440	Spring Pin	2
38	06-65-1425	Spring Pin	1
39	31-92-0200	Trigger Assembly	1
40	40-50-3160	Spring	1
41	44-86-0710	Retainer	1
42	44-10-0650	Selector	1
43	40-50-3095	Selector Spring	1
44	44-90-0825	Ring	1
45	28-50-0805	Tool Body	1
46	44-90-0750	Retaining Ring	1
47	43-31-0370	Filter	1
48	42-92-1355	End Cap	1
49	34-40-3250	O-Ring	1
82	43-56-0865	Work Contact Element Guide	1
83	06-65-1405	Spring Pin	1
84	40-50-3050	Adjustment Spring	1
85	42-36-1970	Contact Bracket B	1
86	43-98-0755	Depth Adjustment Knob	1
87	42-92-1500	Work Contact Element Cover	1
88	44-94-0580	Adjustment Rod Assembly	1
89	34-40-3170	O-Ring	1
90	42-36-1985	Contact Element Bracket	1
91	44-90-0770	E-Ring	1
92	42-36-1960	Contact Element Bracket A	1
93	05-85-0050	Flat Head Hex Bolt	2
57	40-50-3005	Feed Finger Spring	1
58	44-86-0705	Retainer Ring	1
59	34-40-3235	O-Ring	1
60	34-40-3205	O-Ring	1
61	40-50-3085	Feed Piston Spring	1
62	42-38-0345	Feed Bumper	1
106	05-84-0845	Bolt Assembly	1
111	31-94-0110	Trigger Valve Assembly	1



112	94	95	96	97
	98	99	100	101
	102	103	104	105
	107	108	109	110

113	107	108
	109	110

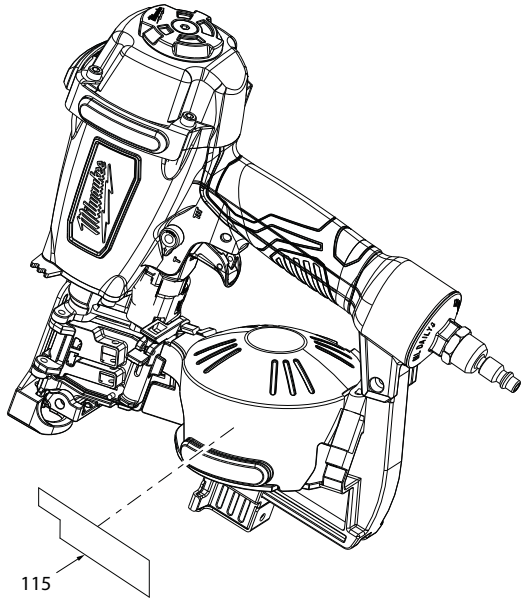


FIG.	PART NO.	DESCRIPTION OF PART	NO. REQ.
50	30-61-0200	Nose Piece	1
51	34-40-3165	O-Ring	1
52	34-40-3265	O-Ring	2
53	44-55-0250	Feed Finger	1
54	05-84-0915	Bolt Assembly	4
55	44-62-0260	Feed Piston	1
56	44-60-1905	Feed Piston Pin	1
57	40-50-3005	Feed Finger Spring	1
58	44-86-0705	Retaining Ring	4
59	34-40-3235	O-Ring	1
60	34-40-3205	O-Ring	1
61	40-50-3085	Feed Piston Spring	1
62	42-38-0345	Feed Bumper	1
63	42-92-1415	Feed Piston Cap	1
64	05-84-0820	Bolt Assembly	2
65	44-55-0260	First Stopper Finger	1
66	44-55-0255	Second Stopper Finger	1
67	40-50-3010	Spring	1
68	40-50-3080	Stopper Finger Spring	3
69	44-60-1895	Nail Stop Pin	1
70	42-92-1410	Door	1
71	40-50-3015	Latch Spring	1

FIG.	PART NO.	DESCRIPTION OF PART	NO. REQ.
72	44-20-0860	Door Latch	1
73	06-65-1415	Spring Pin	1
74	44-50-0205	Door Shaft Pin	1
75	43-56-0890	Guide Block	1
76	44-60-1860	Fixed Pin	1
77	34-40-3190	O-Ring	2
78	42-92-1480	Work Contact Element Cover	1
79	45-88-1760	Flat Washer	2
80	05-84-0895	Bolt, M5 x 0.8-08	1
81	44-26-0100	Magnet	1
94	44-60-1885	Pin	2
95	42-38-0355	Magazine Cover	1
96	43-78-0165	Spring Base A	1
97	40-50-3040	Pull Spring	1
98	45-36-1660	Spacer	1
99	44-55-0265	Nail Tray Adjustor	1
100	05-78-0815	Tap Bolt	3
101	42-98-0375	Magazine Base	1
102	34-40-3130	O-Ring	1
103	44-86-0715	Spring Retainer	1
104	42-38-0365	Magazine Wear Pad B	2
105	42-98-0380	Magazine Wear Pad A	1
106	05-84-0845	Bolt Assembly	1
107	44-66-1335	Positional Plate	1
108	40-50-3055	Work Contact Element Spring	1
109	44-66-1330	Adjusting Plate A	1
110	44-66-1325	Adjusting Plate B	1
112	45-24-0020	Magazine Coil Assembly	1
113	43-56-0565	Shingle Guide Assembly	1
115	12-98-0310	Service Nameplate/Warning Label	1
	14-70-0140	Overhaul Kit (Not Shown)	1
	14-70-0160	Driver Maintenance Kit (Not Shown)	1