



Operating Instructions and Parts Manual

Portable Woodworking Dust Collector

Model DC-500P



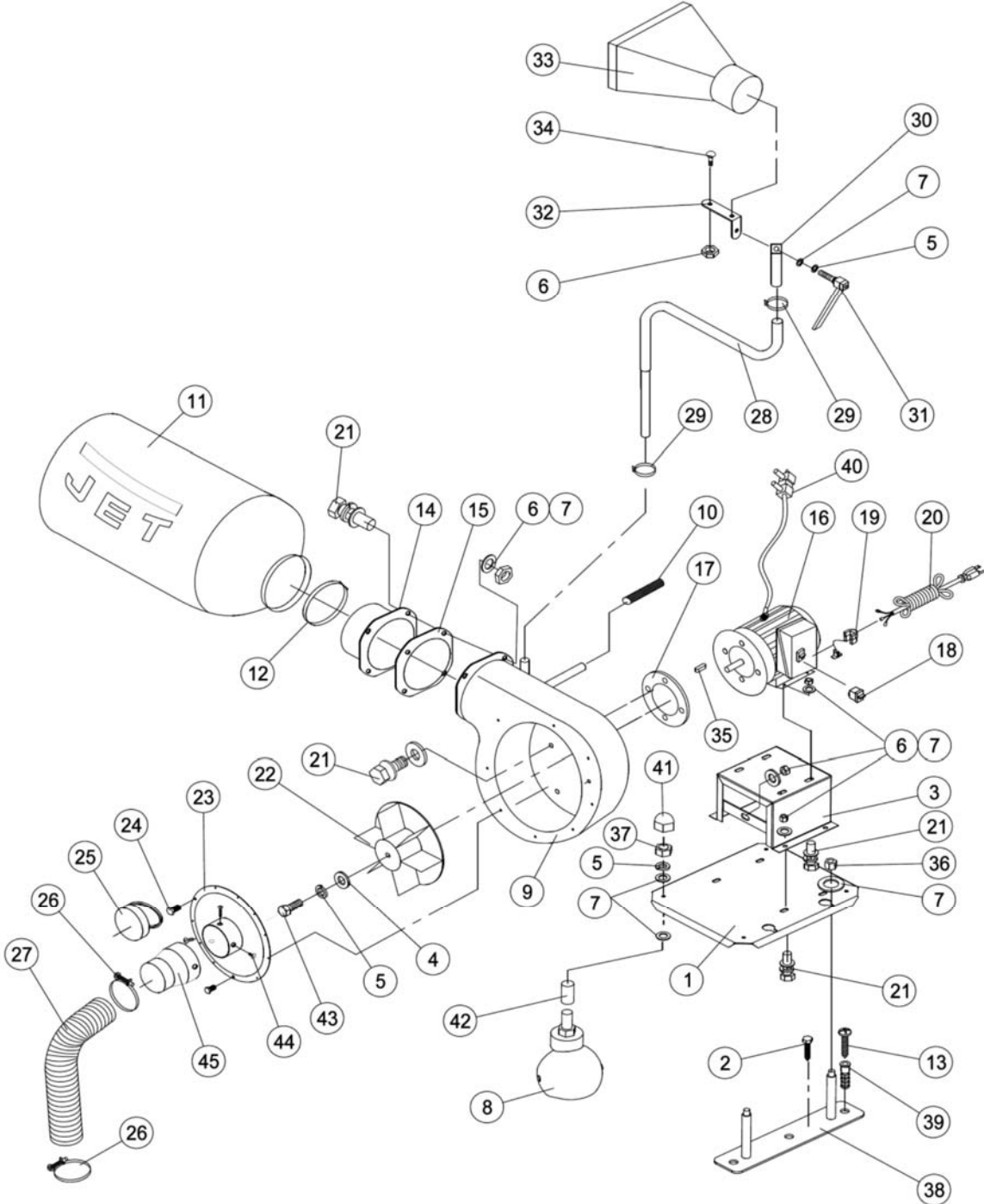
JET
427 New Sanford Road
LaVergne, Tennessee 37086
Ph.: 800-274-6848
www.jettools.com

Part No. M-717500
Edition 1 06/2018
Copyright © 2018 JET

10.0 Replacement Parts

To order parts or reach our service department, call 1-800-274-6848 Monday through Friday, 8:00 a.m. to 5:00 p.m. CST. Having the Model Number and Serial Number of your machine available when you call will allow us to serve you quickly and accurately. Non-proprietary parts, such as fasteners, can be found at local hardware stores, or may be ordered from JET. Some parts are shown for reference only, and may not be available individually.

10.1.1 DC-500P Portable Dust Collector – Exploded View



10.1.2 DC-500P Portable Dust Collector – Parts List

Index No	Part No	Description	Size	Qty
1	DC500P-001	Base		1
2	DC500P-002	Hex Cap Lag Screw	ST9.5x50 mm	1
3	DC500P-003	Motor Base		1
4	DC500P-004	Washer		1
5	TS-2361081	Lock Washer	8mm	5
6	TS-2311081	Hex Nut	M8	15
7	TS-1550061	Flat Washer	8mm	11
8	DC500P-008	Caster		4
9	DC500P-009	Impeller Housing		1
10	DC500P-010	Handle Grip		1
11	DC500P-011	Collector Bag		1
12	DC500P-012	Wire Clamp	Ø5"	1
13	DC500P-013	Phillips Self-Tapping Screw	ST6.3x32 mm	2
14	DC500P-014	Exhaust Flange		1
15	DC500P-015	Gasket		1
16	DC500P-016	Motor Assembly	3/4HP 115V	1
	DC500P-016WD	Wiring Diagram (not shown)		1
	DC500P-016ML	Motor Label, DC500P (not shown)		1
	DC500P-016MF	Motor Fan (not shown)		1
	DC500P-016RC	Running Capacitor (not shown)	40µF, 450V	1
	DC500P-016JB	Junction Box (not shown)		1
	DC500P-016JBC	Junction Box Cover (not shown)		1
17	DC500P-017	Motor Gasket		1
18	DC500P-018	Switch with Key		1
19	DC500P-019	Strain Relief		1
20	DC500P-020	Power Cord with Plug	16AWGx3C, 7-1/2ft.	1
21	TS-1490031	Hex Head Bolt	M8x20	17
22	DC500P-022	Impeller		1
23	DC500P-023	Cover Assembly		1
24	DC500P-024	Phillips Pan Hd Self-Tapping Screw	ST4.2x12.7 mm	10
25	DC500P-025	Inlet Cap		1
26	DC500P-026	Wire Clamp	Ø4"	2
27	DC500P-027	Flexible Hose	Ø4" x 10'	1
28	DC500P-028	Lower Support Tube		1
29	DC500P-029	Butterfly Clamp		2
30	DC500P-030	Upper Support Tube		1
31	DC500P-031	Locking Handle		1
32	DC500P-032	Funnel Support Bracket		1
33	DC500P-033	Dust Funnel		1
34	DC500P-034	Carriage Bolt	M8x20	2
35	DC500P-035	Key Dbl Rd Hd	C6x25mm	1
36	TS-1541031	Nylon Lock Hex Nut	M8	2
37	TS-2342101	Nylon Lock Hex Nut	M10	4
38	DC500P-038	Wall Mount Plate		1
39	DC500P-039	Screw Anchor		2
40	DC500P-040	Ground wire		1
41	TS-2331081	Cap Nut	M8	4
42	DC500P-042	Sleeve		4
43	TS-1490031	Hex Cap Screw	M8x20	1
44	JWBS14SFX-179	Philips Pan Head Self-Tapping Screw	ST4.2x10	3
45	DC500P-045	Inlet Adapter		1
	LM000353	ID Label, DC-500P (not shown)		1
	LM000355	Warning Label, DC-500P (not shown)		1
	LM000356	Rotation Label, DC-500P (not shown)		1
	JET-92	JET Logo (not shown)	92x38mm	1