



# Operating Instructions and Parts Manual 10-inch Band Saw

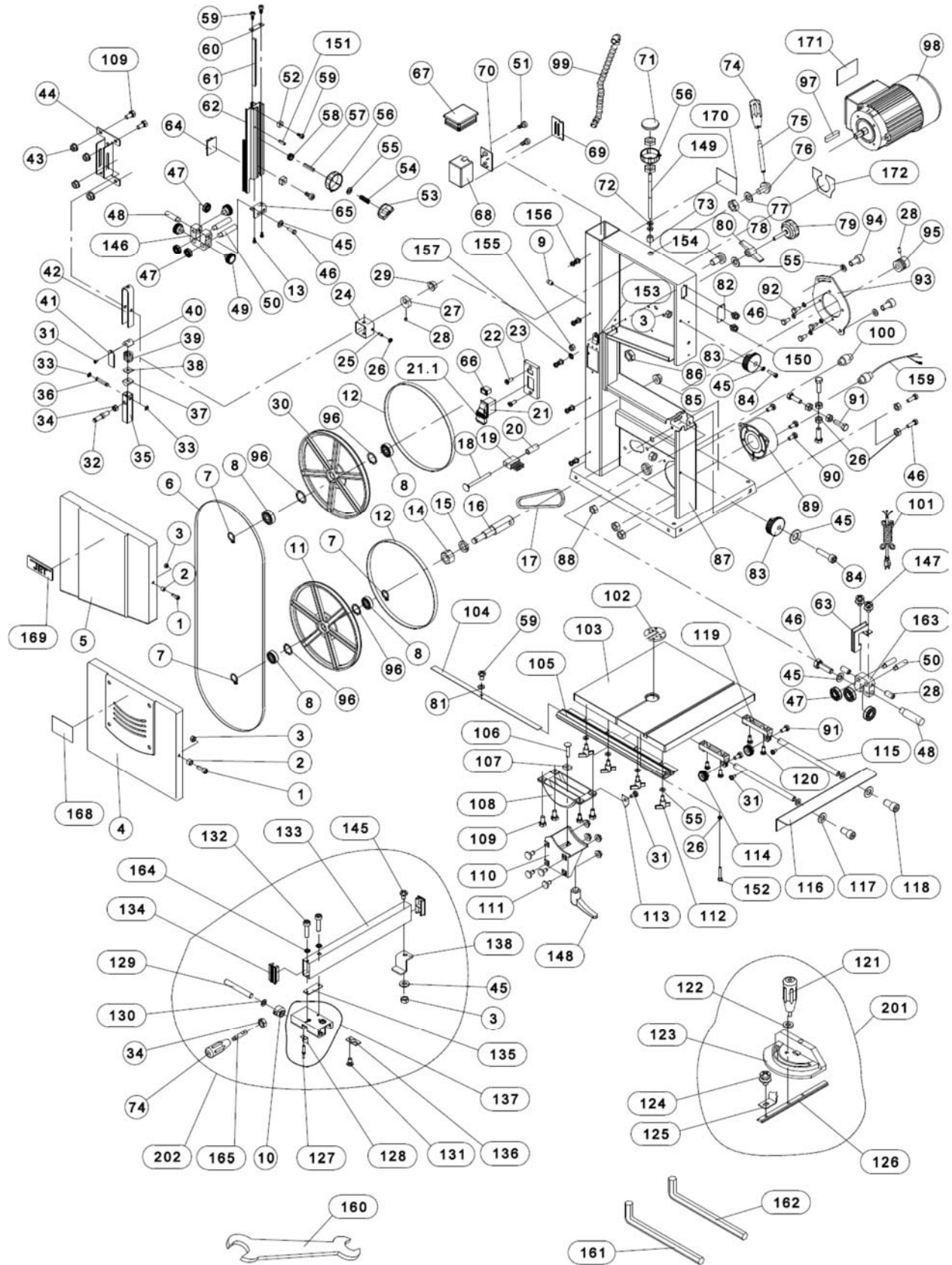
Model JWB-10



**JET**  
427 New Sanford Road  
LaVergne, Tennessee 37086  
Ph.: 800-274-6848  
www.jettools.com

**Part No. M-714000**  
Edition 1 12/2015  
Copyright © 2015 JET

### 14.1.1 JWB-10 Band Saw – Exploded View



### 14.1.3 JWB-10 Band Saw and Stand – Parts List

Index No	Part No	Description	Size	Qty
1	TS-1503041	Socket Head Cap Screw	M6x16	2
2	JWB10-002	Spacer		2
3	TS-1541021	Nylon Insert Lock Nut	M6	5
4	JWB10-004	Lower Door		1
5	JWB10-005	Upper Door		1
6	JWBS10OS-8	Blade	67.5 x 0.375 x 0.014, 6TPI	1
7	JDP12-42	Retaining Ring	11mm	2
8	BB-6001ZZ	Ball Bearing	6001RS	4
9	JWB10-009	Cord Bushing		1
10	JWB10-010	Eccentric shaft		1
11	JWB10-011	Lower Wheel		1
12	JWB10-012	Tire		2
13	JWB10-013	Self-Tapping Screw	ST3.5x12	2
14	F003103	Hex Nut	M14-1.5	1
15	JWB10-015	Retaining Ring	14mm	1
16	JWB10-016	Lower Wheel Shaft		1
17	JWB10-017	Belt	4PJ337	1
18	JWB10-018	Carriage Bolt	M8x70	1
19	JWB10-019	Brush		1
20	JWB10-020	Spacer Bushing		1
21	JWB10-021	Start/Stop Switch		1
21.1	JWBS10OS-25-1	Switch Safety Key		1
22	TS-1512021	Socket Head Flat Screw	M4x12	2
23	JWB10-023	Switch Plate		1
24	JWBS10OS-30	Square Housing		1
25	TS-1523041	Socket Set Screw	M6x12	1
26	TS-1540041	Hex Nut	M6	8
27	JWBS10OS-29	Eccentric Block		1
28	TS-1523031	Socket Set Screw	M6x10	4
29	JWB10-029	Sleeve		1
30	JWB10-030	Upper Wheel		1
31	TS-2284082	Pan Head Machine Screw	M4x8	4
32	JWB10-032	Upper Wheel Shaft		1
33	JWB10-033	E-Clip	6mm	2
34	TS-2311101	Hex Nut	M10	2
35	JWBS10OS-69	Upper Wheel Axis Seat		1
36	JWB10-036	Shaft		1
37	JWBS10OS-67	Nut		1
38	JWB10-038	Tension Scale Pointer		1
39	JWB10-039	Spring		1
40	JWBS10OS-64	Semi-Sphere Segment		1
41	JWB10-041	Tension Scale		1
42	JWBS10OS-63	U-Bracket		1
43	JWB10-043	Hex Flange Nut	M6	40
44	JWBS10OS-61	Guide Plate		1
45	TS-1550041	Washer	6mm	5
46	TS-1482021	Hex Cap Screw	M6x12	8
47	BB-627Z	Ball Bearing	627Z	6
48	JWB10-048	Bearing Shaft		2
49	JWB10-049	Lock Knob		3
50	JWB10-050	Bearing Shaft		4
51	JWB10-051	Self-Tapping Screw	ST4.2x13	2
52	JWB10-052	Guide Block		2
53	JWB10-053	Locking Knob		1
54	JWB10-054	Spring		1
55	TS-1550061	Flat Washer *	8mm	7
56	JWB10-056	Knob		2
57	JWB10-057	Shaft		1
58	JWB10-058	Gear		1
59	JWB10-059	Self-Tapping Screw	ST3.5x10	4

Index No	Part No	Description	Size	Qty
60	JWB10-060	Blade Guard Cover		1
61	JWB10-061	Rack		1
62	JWB10-062	Upper Blade Guard		1
63	JWB10-063	Lower Blade Guard		1
64	JWB10-064	Sliding Plate		1
65	JWB10-065	Guide Seat		1
66	JWB10-066	LED Lamp Switch		1
67	JWB10-067	Tube Plug		1
68	JWB10-068	Voltage Adapter		1
69	JWB10-069	Voltage Adapter Cover		1
70	JWB10-070	PCB		1
71	JWB10-071	Knob Cover		1
72	JWB10-072	Thin Hex Nut	M8	4
73	JWB10-073	Tension Sleeve		1
	JWB10-074A	Handle Assembly (#74,75)		1
74	JWB10-074	Handle Grip		2
75	JWB10-075	Handle		1
76	JWB10-076	Hub		1
77	JWB10-077	Washer		1
78	JWB10-078	Thin Hex Nut	M20x1.5	1
79	JWB10-079	Knob		1
80	JWB10-080	Wing Nut		1
81	TS-1550021	Washer	4mm	1
82	JWB10-082	Blade Tracking Window		1
83	JWB10-083	Door Lock Knob		2
84	TS-1503061	Socket Head Cap Screw	M6x25	2
85	JWB10-085	Hex Nut *	M8	4
86	JWB10-086	Hex Nut	G1/4	1
87	JWB10-087	Saw Body		1
88	TS-1540031	Hex Nut	M5	3
89	JWBS10OS-95	Dust Chute		1
90	TS-1533042	Pan Head Machine Screw	M5x12	3
91	TS-1482041	Hex Cap Screw	M6x20	6
92	TS-2361061	Spring Washer	6mm	4
93	JWB10-093	Motor Mount		1
94	TS-1504031	Socket Head Cap Screw	M8x16	2
95	JWB10-095	Motor Pulley		1
96	F006051	Retaining Ring, External	C-28	4
97	6296048	Key	A5x25	1
98	JWB10-098	Motor Assembly	1/2HP, 115V, 1Ph	1
	JWB10-098MF	Motor Fan (not shown)		1
	JWB10-098RC	Running Capacitor (not shown)	25µF, 300V	1
	JWB10-098JB	Junction Box (not shown)		1
	JWB10-098JBC	Junction Box Cover (not shown)		1
	JWB10-098MC	Motor Cover (not shown)		1
99	JWBS10OS-36	LED Lamp Assembly		1
100	JWB10-100	Strain Relief		2
101	JWB10-101	Power Cord		1
102	JWB10-102	Table Insert		1
103	JWBS10OS-100	Table		1
104	JWB10-104	Table Scale		1
105	JWB10-105	Fence Guide Rail		1
106	JWB10-106	Carriage Bolt	M8x30	1
107	JWB10-107	Slide Block		1
108	JWB10-108	Trunnion		1
109	JWB10-109	Hex Cap Screw *	M6x12	8
110	JWB10-110	Support Bracket		1
111	JWB10-111	Carriage Bolt	M6x16	4
112	JWB10-112	Wing Screw *		4
113	JWB10-113	Pointer		1
114	JWB10-114	Lock Knob		2
115	JWBS10OS-115	Extension Rod		2

Index No	Part No	Description	Size	Qty
116	JWBS10OS-114	Extension Wing		1
117	TS-1550071	Flat Washer	10mm	4
118	TS-1505011	Socket Head Cap Screw	M10x16	2
119	JWB10-119	Extension Bracket		2
120	TS-1533032	Pan Head Machine Screw	M5x10	4
201	JWB10-201	Miter Gauge Assembly (#121 thru 126)		1
121	JWB10-121	Handle		1
122	TS-1550041	Flat Washer	6mm	1
123	JWB10-123	Miter Gauge		1
124	JWB10-124	Pan Head Screw Assembly	M5x8	1
125	JWB10-125	Pointer		1
126	JWB10-126	Sliding Guide		1
202	JWB10-202	Complete Fence Assembly (#127 thru 138,3,34,45,145,74,164,165)		1
127	JWB10-127	Self-Plugging Rivet	4x6mm	1
128	JWB10-128	Plate		1
129	JWB10-129	Shaft		1
130	JWB10-130	Washer		1
131	TS-1531012	Pan Head Machine Screw	M3x6	1
132	TS-1502021	Socket Head Cap Screw	M5x10	2
133	JWB10-133	Fence		1
134	JWB10-134	Block		2
135	JWB10-135	Plate		1
136	JWB10-136	Plate		1
137	JWB10-137	Fence Base Assembly		1
138	JWB10-138	Block		1
203	JWB10-203	Stand Assembly (#43, 139 thru 145, 158)		1
139	JWB10-139	Short Support Plate A		1
140	JWB10-140	Stand Leg		4
141	JWB10-141	Long Cross Brace		2
142	JWB10-142	Short Cross Brace		2
143	JWB10-143	Long Support Plate		2
144	JWB10-144	Short Support Plate B		1
145	JWB10-145	Carriage Bolt	M6x12	33
146	JWB10-146	Bearing Bracket A		1
147	JWB10-147	Phillips Screw Assembly	M4x6	2
148	JWB10-148	Lock Handle		1
149	JWB10-149	Shaft		1
150	JWB10-150	Philips Screw Assembly	M4x6	2
151	JWB10-151	Pin	2.4x14	1
152	TS-1503081	Socket Head Cap Screw	M6x35	1
153	JWB10-153	Clamp		3
154	TS-1532032	Pan Head Machine Screw	M4x10	3
155	TS-1540021	Hex Nut	M4	3
156	JWB10-156	Phillips Screw Assembly	M4X8	6
157	F002095	Lock Washer, Ext. Tooth	4mm	2
158	JWB10-158	Rubber Foot		4
159	JWB10-159	Cord		1
160	JWB10-160	Wrench		1
161	TS-152704	Hex wrench S3	S3	1
162	TS-152707	Hex wrench S6	S6	1
163	JWB10-163	Bearing Bracket B		1
164	F002097	Lock Washer, Ext. Tooth	5mm	2
165	JWB10-165	Shaft		1
166	TS-2361081	Lock Washer *	8mm	3
167	TS-2361081	Hex Cap Screw *	M8x55	3
168	JWB10-168	Warning Label		1
169	JET-92	Jet Logo with Adhesive	92x38mm	1
170	JWB10-170	ID Label		1
171	JWB10-171	Motor Label		1
172	JWB10-172	Lock Label		1
	JWB10-HP	Hardware Package (includes items marked with *)		