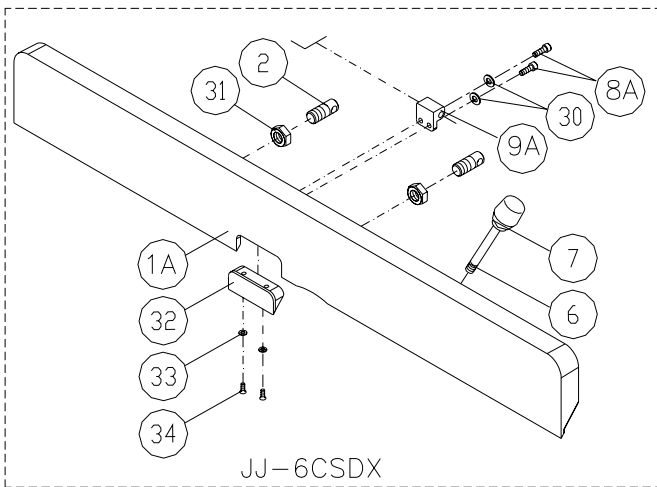
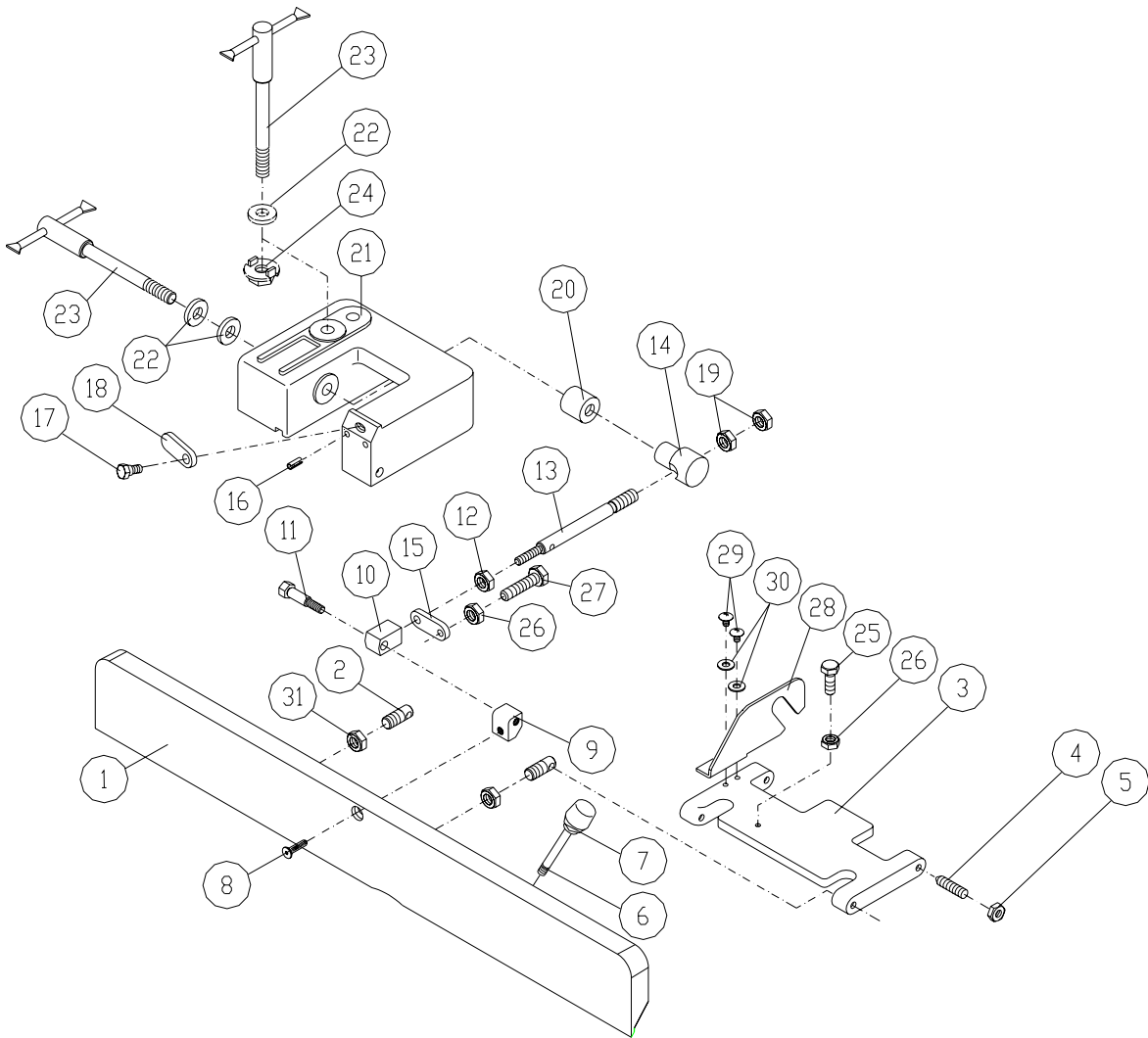


Fence – Parts All Models

Index No.	Part No.	Description	Size	Qty.
	JEJ-FW	Fence Assembly Complete (JJ-6CSX)		1
	JJ6CSDX-FAC	Fence Assembly Complete (JJ-6CSDX)		1
1	JEJ-F01W	Fence Body (JJ-6CSX)		1
1A	JJ6CSDX-201	Fence Body (JJ-6CSDX)		1
2	JEJ-F14	Fence Link		2
3	JEJ-F02W	Tilt Plate (JJ-6CSX)		1
	JJ6CSDX-203	Tilt Plate (JJ-6CSDX)		1
4	JED-F16	Threaded Stud		4
5	TS-0561031	Hex Nut	3/8"-16	4
6	JEB-F09	Handle		1
7	5DF-I09	Knob		1
8	5CH-F13A	Flat Head Socket Screw (JJ-6CSX)	5/16"x1-5/8"	2
8A	TS-0207041	Socket Head Cap Screw (JJ-6CSDX)	1/4"-20x3/4"	2
9	JED-F02	Block (JJ-6CSX)		1
9A	PJ882-142	Fixed Block (JJ-6CSDX)		1
10	JEJ-F03	Block		1
11	JEJ-F04	Bolt		1
12	TS-0561041	Hex Nut	7/16"-14	1
13	JEJ-F05	Stud		1
14	JEJ-F06	Swivel Block		1
15	JEJ-F07	Plate		1
16	5FF-J12	Spring Pin	Ø4x12	1
17	JEJ-F08	Hex Cap Bolt		1
18	JEJ-F09	Plate		1
19	TS-0561072	Hex Nut	5/8"-18UNF	2
20	JEJ-F10	Bushing		1
21	JEJ-F11W	Fence Bracket (JJ-6CSX)		1
	JJ6CSDX-221	Fence Bracket (JJ-6CSDX)		1
22	TS-0680061	Flat Washer	1/2"	3
23	JEJ-F12	Lock Handle		2
24	JED-F17	Lock Nut		1
25	TS-0051051	Hex Cap Screw	5/16"-18x1"	1
26	TS-0561021	Hex Nut	5/16"-18	2
27	TS-0051081	Hex Cap Screw	5/16"-18x1-3/4"	1
28	JED-F03	Plate		1
29	TS-0813032	Screw	1/4"-20x1/2"	2
30	TS-0680021	Flat Washer (JJ-6CSX)	1/4"	2
	TS-0680021	Flat Washer (JJ-6CSDX)	1/4"	4
31	TS-0561052	Hex Nut	1/2"-20UNF	2
32	PJ882-144	Pad Block (JJ-6CSDX)		1
33	TS-069204	Flat Washer (JJ-6CSDX)	#10	2
34	TS-0206021	Socket Head Cap Screw (JJ-6CSDX)	#10-24x1/2"	2

Fence – Assembly All Models



Stand – Parts All Models

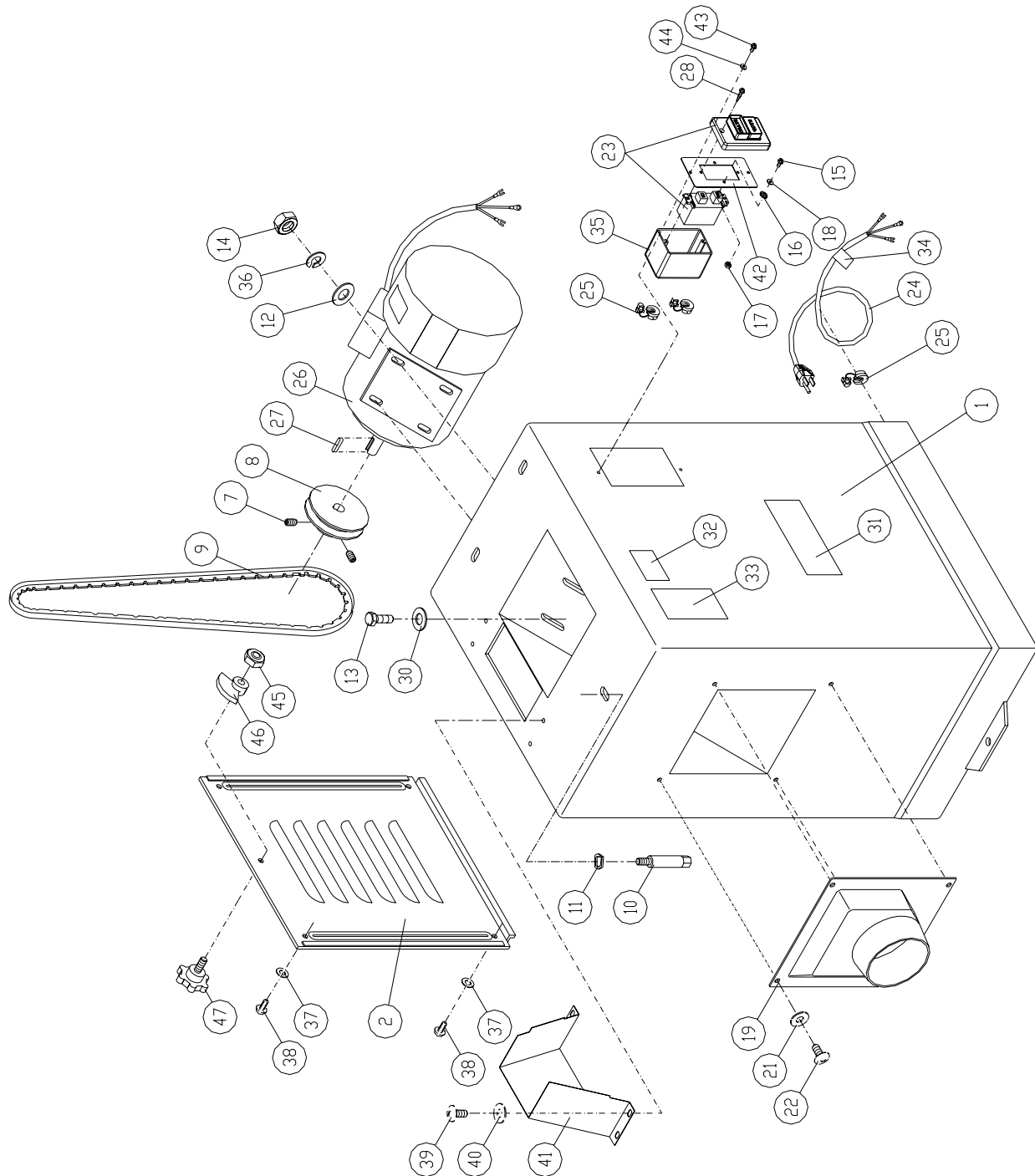
Index No.	Part No.	Description	Size	Qty.
1	Jl-Y01W	Stand Body		1
2	Jl-Y01AW	Access Cover		1
7	TS-0267041	Set Screw	1/4"-20x3/8"	2
8	JH-M10	Motor Pulley (JJ-6CSX)		1
	6296125	Motor Pulley (JJ-6CSDX)		1
9	VB-A36	V-Belt (JJ-6CSX)	A-36	1
	VB-A37	V-Belt (JJ-6CSDX)	A-37	1
10	JC-M07	Lock Bolt*	3/8"-16	3
11	TS-0720091	Lock Washer*	3/8"	3
12	TS-0680031	Flat Washer	5/16"	4
13	TS-0051031	Hex Head Bolt	5/16"-18x3/4"	4
14	TS-0561021	Hex Nut	5/16"-18	4
15	TS-081B042	Screw	#8-32x5/8"	2
16	5EA-D05	Star Washer	#8	2
17	TS-0560061	Hex Nut	#8-32	2
18	TS-1550021	Flat Washer	M4	2
19	JEX-S02	Dust Chute		1
21	TS-0680021	Flat Washer*	1/4"	4
22	TS-081F032	Screw*	1/4"-20x1/2"	4
23	994542	Switch		1
24	Jl-X02	Power Cord		1
25	5QA-I04	Strain Relief Bushing		3
26	Jl-X04W	Motor	1HP	1
	Jl-X04-AA	Centrifugal Switch (not shown)		1
	Jl-X04-B	Capacitor (motor – not shown)	300MFD 125VAC	1
	Jl-X04-CA	Capacitor Cover		1
	Jl-X04-DA	Junction Box (motor – not shown)		1
	Jl-X04-EA	Junction Box Cover (motor – not shown)		1
	Jl-X02-A	Motor Cord (not shown)		1
	JJ6CS-HK	Hardware Kit (not shown)		1
	TS-152704	Hex Key Wrench (3mm – not shown)*		1
	JJ6CS-OEW	Open End Wrench (8/10mm – not shown)*		1
	JJ6CS-OEW2	Open End Wrench (12/14mm – not shown)*		1
	TS-227D081	Hex Wrench (8mm – not shown)**		1
	JJ6CSDX-326A	T-Hex Wrench (4mm – not shown)**		1
27	JJ6-03CS	Key	5x5x30	1
28	5AL-C10B	Tapping Screw	M4x25	2
30	TS-0680031	Flat Washer	5/16"	4
31	PG-M02	JET Logo Label		1
32	JJ6CSX-332	Warning Label		1
33	JEB-S07	Warning Label		1
34	JEB-S08	Voltage Label		1
35	JEB-S09	Switch Box		1
36	TS-0720081	Lock Washer	5/16"	4
37	TS-1550021	Flat Washer*	M4	4
38	TS-0803032	Screw*	#5-40x3/8"	4
39	TS-081F032	Screw*	1/4"-20x1/2"	4
40	TS-0680021	Flat Washer*	1/4"	4
41	JEY-S03W	Belt Guard		1
42	JEY-S07	Plate		1
43	TS-081C032	Screw	#10-24x1/2"	2
44	TS-069204	Flat Washer	#10	2

* included in Hardware Kit for JJ-6CSX

, included in Hardware Kit for JJ-6CSDX

Stand – Parts and Assembly All Models

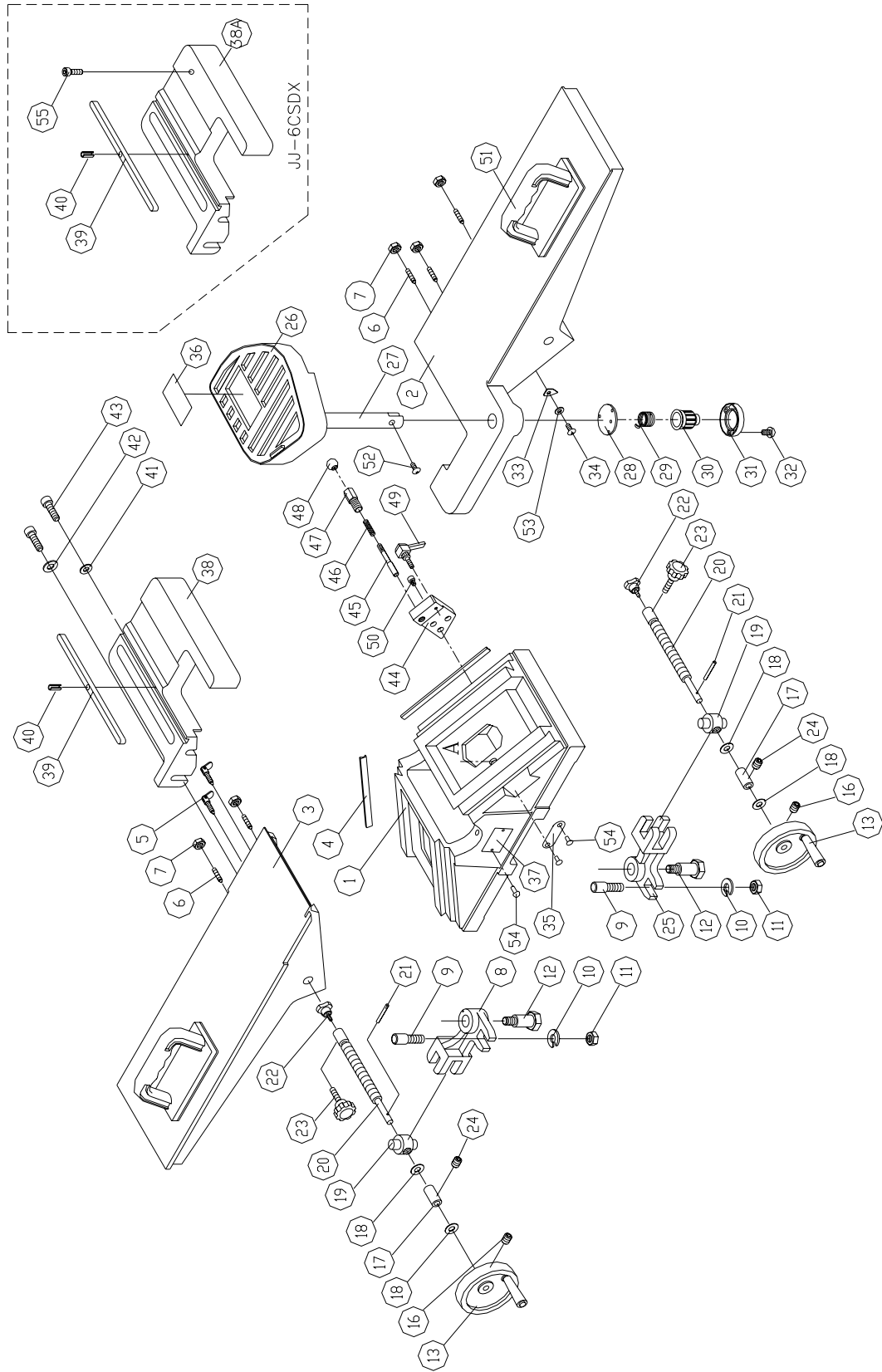
45 TS-0561031 Hex Nut 3/8"-16 1
46 JC-M05 Door Latch 1
47 JC-M04 Knob Screw 1



Bed – Parts All Models

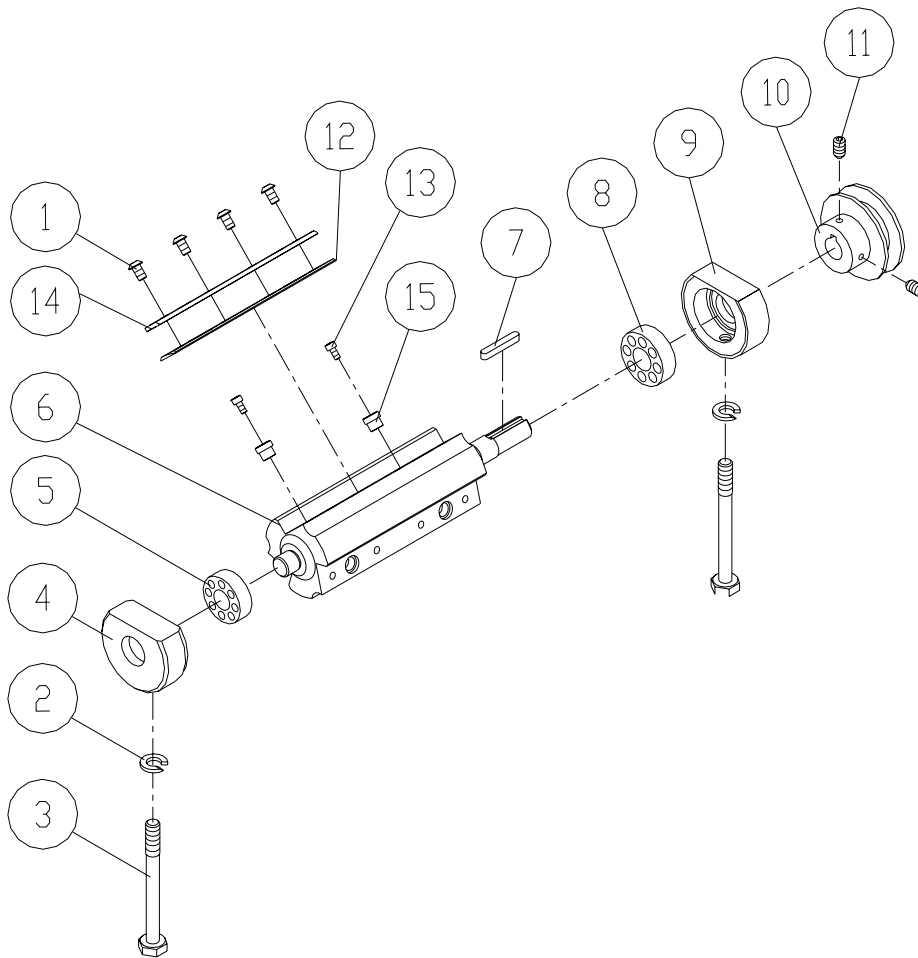
Index No.	Part No.	Description	Size	Qty.
1	Jl-T01W	Base		1
2	Jl-T02W	Front Table (JJ-6CSX)		1
	JJ6CSDX-402	Front Table (JJ-6CSDX)		1
3	Jl-T03W	Rear Table (JJ-6CSX)		1
	JJ6CSDX-403	Rear Table (JJ-6CSDX)		1
4	Jl-T04	Gib		2
5	JH-T30	Lock Screw		2
6	TS-0267091	Set Screw	1/4"-20x1"	5
7	TS-0561011	Hex Nut	1/4"-20	5
8	Jl-T07W	Ball Crank		1
9	Jl-T06	Shoulder Pin		2
10	TS-0680061	Flat Washer	1/2"	2
11	PJ882-118	Hex Nut	1/2"-12	2
12	JH-T11	Pivot Pin		2
13	JJ6CSX-413	Handwheel Assembly		2
16	TS-0267041	Set Screw	1/4"-20x3/8"	2
17	JH-T16	Bushing		2
18	JH-T17	Washer		4
19	JH-T18	Adjusting Nut		2
20	JH-T19	Adjusting Screw		2
21	5F-E108	Pin	Ø3x24	2
22	JH-T20	Lock Knob		2
23	JH-T21	Lock Knob		2
24	TS-0270031	Set Screw	5/16"-18x3/8"	2
25	JH-T12W	Ball Crank		1
26	JH-T22	Cutterhead Guard		1
27	JH-T23	Guard Post		1
28	JH-T24	Retaining Washer		1
29	JH-T25	Spring		1
30	JH-T26	Spring Knob		1
31	JH-T27	Retainer		1
32	TS-081B042	Screw	#8-32x5/8"	3
33	JC-T17	Pointer		1
34	TS-081B012	Screw	#8-32x1/4"	1
35	JJ6-19	Depth Scale		1
36	JJ6-01CS	Warning Label		1
37	JJ6-02CS	I.D Label (JJ-6CSX)		1
	JJ6CSDX-437	I.D Label (JJ-6CSDX)		1
38	JEJ-B14W	Fence Base (JJ-6CSX)		1
38A	JJ6CSDX-438	Fence Base (JJ-6CSDX)		1
39	JED-B02	Key		1
40	5FF-J12	Spring Pin	Ø4x20	1
41	TS-0680041	Flat Washer	3/8"	1
42	TS-0680041	Flat Washer	3/8"	1
43	TS-0209071	Socket Head Cap Screw	3/8"-16x1-1/2"	2
44	JEY-B01	1/8" Set Block		1
45	JEA-B06	Stud		1
46	JEA-B08	Spring		1
47	JEA-B09	Stud		1
48	5DF-B05	Knob		1
49	5CO-D09B	Lock Handle	1/4"-20x7/8"	1
50	TS-0208041	Hex Socket Cap Screw	5/16"-18x3/4"	3
51	708815	Push Block		2
52	TS-1533032	Screw	M5x0.8Px10	1
53	TS-1550021	Flat Washer	M4	1

54	5F-H051	Rivet	6
55	TS-0207021	Socket Head Cap Screw (JJ-6CSDX)	1/4"-20x1/2" 1



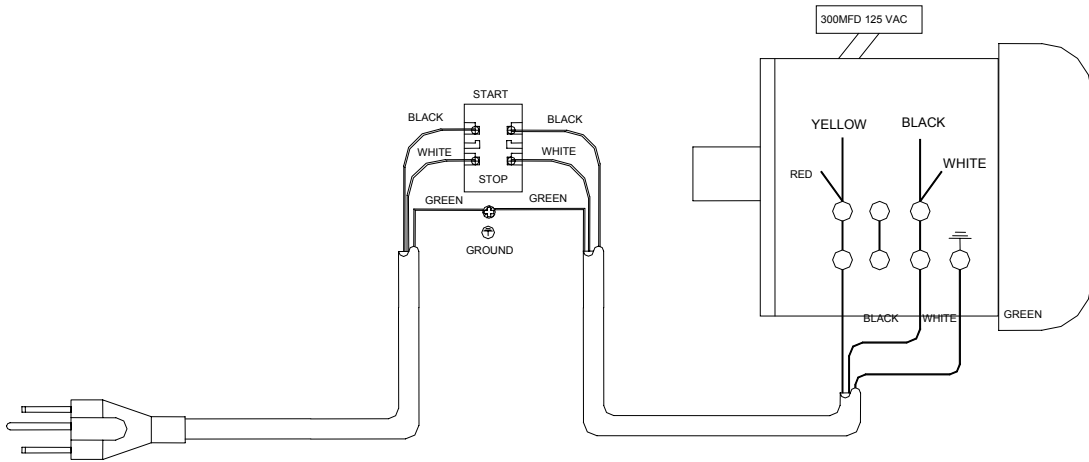
Cutterhead – Parts and Assembly JJ-6CSDX

Index No.	Part No.	Description	Size	Qty.
.....	JJ6CSDX-CA	Cutterhead Assembly (Index #s 1-15)	1
1	JJ6CSDX-101	Special Button Head Socket Screw	12
2	TS-0720091	Lock Washer	3/8"	2
3	JEA-B01	Bolt	2
4	3H-C02	Bearing Housing	1
5	BB-6202ZZ	Ball Bearing	6202ZZ	1
6	JJ6CSDX-106	Cutterhead	1
7	5F-G108	Key	5x5x25	1
8	BB-6203ZZ	Ball Bearing	6203ZZ	1
9	JH-C04	Bearing Housing	1
10	JH-C07	Cutterhead Pulley	1
11	TS-0267041	Set Screw	1/4"-20x3/8"	2
12	708801DX	Knife for JJ-6CSDX (set of 3)	1
13	TS-1501021	Socket Head Cap Screw	M4-0.7Px8	6
14	JJ6CSDX-114	Knife Lock Bar	3
15	JJ6CSDX-115	Adjustment Nut	6



Wiring Diagram – All Models

ELECTRICAL SCHEMATIC - 115V



ELECTRICAL SCHEMATIC - 230V

