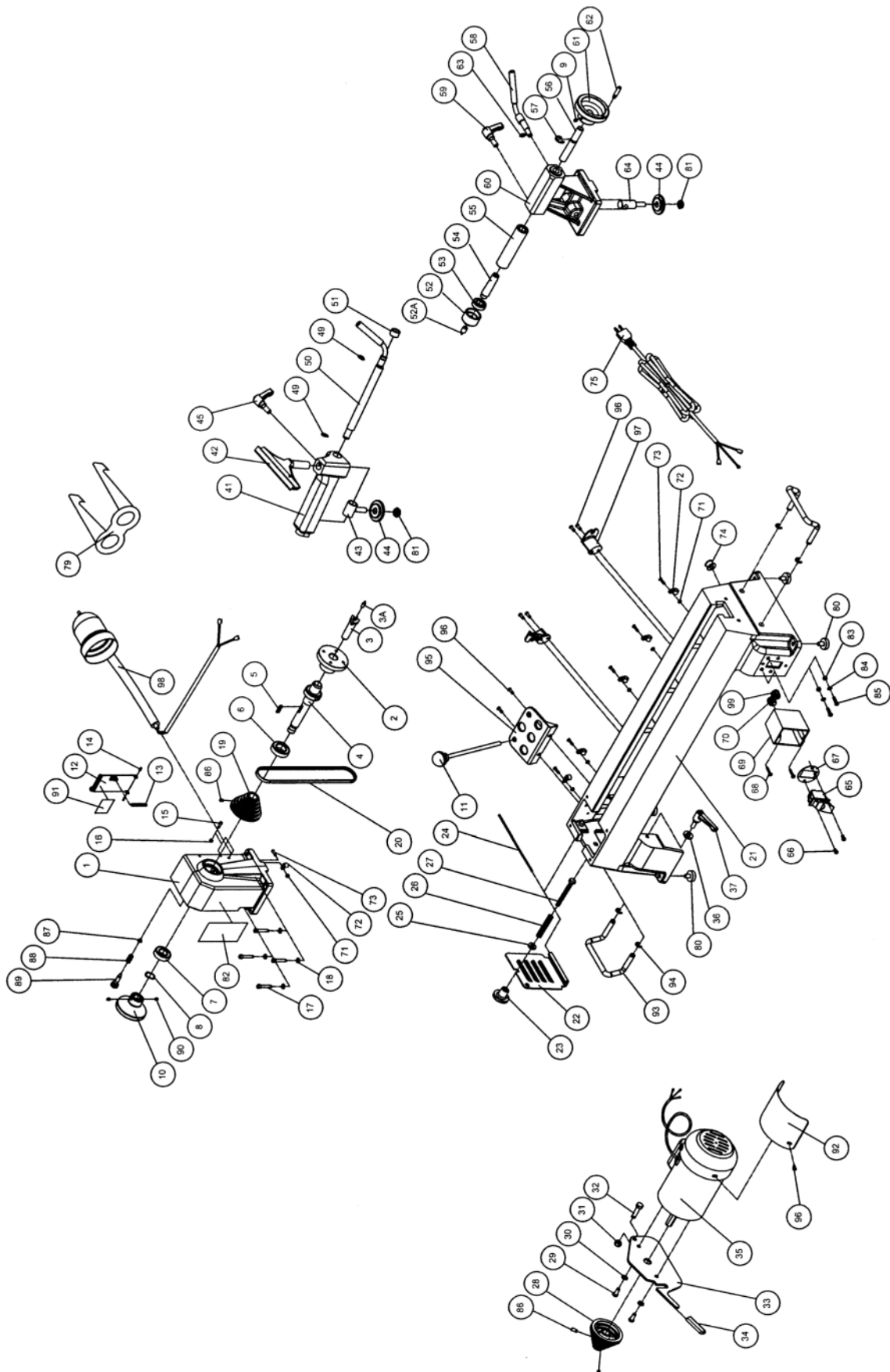


JWL-1220 Lathe



Parts List for JWL-1220 Lathe

Index No.	Part No.	Description	Size	Qty
1	JWL1220-101	Headstock		1
2	JML-2	Faceplate	3"	1
3	JML-3	Spur Center	MT2	1
3A	JML-3A	Center Point for Spur Center		1
4	JML-4	Spindle	1" x 8 TPI	1
5	JML-5	Key	5x25mm	1
6	BB-6005VV	Ball Bearing	6005VV	1
7	BB-6004VV	Ball Bearing	6004VV	1
8	JML-8	Wave Washer		1
9	TS-0267041	Socket Set Screw	1/4"-20x3/8"	2
10	JML1014-110	Hand Wheel		1
11	JML-11	Drift Rod		1
12	JML-12W	Spindle Pulley Door		1
13	JML-13	Spring		1
14	JML-14	Roll Pin	Ø3 x 10mm	2
15	TS-081C042	Pan Head Screw	#10-24x5/8"	1
16	TS-0560071	Hex Nut	#10-24	1
17	TS-0207071	Socket Head Cap Screw	1/4"-20x1-1/4"	4
18	TS-0720071	Lock Washer	1/4"	4
19	JML1014-119	Spindle Pulley		1
20	JWL1220-120	V-Belt	260J	1
21	JWL1220-121	Bed		1
22	JML-22W	Motor Pulley Door		1
23	JML-23	Lock Knob	M8	1
24	JWL1220-124	Pin		1
25	TS-1550061	Flat Washer	M8	1
26	JML-26	Spring		1
27	JML-27	Hex Cap Screw	M8x75	1
28	JML-28	Motor Pulley		1
29	TS-0050021	Hex Cap Screw	1/4"-20x5/8"	2
30	TS-0720071	Lock Washer	1/4"	2
31	TS-0640081	Nylon Insert Lock Nut	5/16"-18	1
32	TS-0051061	Hex Cap Screw	5/16"-18x1-1/4"	1
33	JWL1220-133	Motor Bracket		1
34	JWL1220-134	White Handle Protector		1
35	JWL1220-135	Motor	3/4HP, 1Ph, 115V	1
	JWL1220-135C	Capacitor (not shown)	20uf, 250VAC	1
	JWL1220-135CC	Capacitor Cover (not shown)		1
	JWL1220-135MFC	Motor Fan Cover (not shown)		1
36	TS-0680031	Flat Washer	5/16"	1
37	JML-37A	Lock Handle Assembly, Motor Plate		1
41	JWL1220-141	Tool Rest Body		1
42	JWL1220-142	Tool Rest	6"	1
	JWL1220-142A	Tool Rest	10"	1
43	JML-43	Bolt		1
44	JML-44	Clamp		2
45	JML-45A	Lock Handle Assembly, Tool Rest Body		1
49	JML-49	C-Ring	STW-12	2
50	JWL1220-150	Eccentric Locking Rod		1
51	JML-51	Bushing		1
52	JML-52	Live Center Head		1
52A	JML-52A	Center Point for Live Center		1
53	BB-6002ZZ	Ball Bearing	6002ZZ	1
54	JML-54	Live Center Shaft		1
	708331	Live Center Assembly (not shown)		1

55	JML-55	Tailstock Spindle		1
56	JML-56	Leadscrew		1
57	JML-57	E-Ring	ETW-12	1
58	JML-58	Eccentric Locking Rod		1
59	JML-59A	Lock Handle Assembly, Tailstock		1
60	JWL1220-160	Tailstock		1
61	JML-61	Hand Wheel		1
62	JML-62	Handle		1
63	JML-63	C-Ring	STW-10	1
64	JML-64	Bolt		1
65	JML-65	On-Off Switch		1
	JML-65A	On-Off Switch Key (not shown)		1
66	TS-081C022	Pan Head Screw	#10-24x3/8"	2
67	JML-67	Switch Bracket		1
68	JML-68	Tapping Screw	M4x25	2
69	JWL1220-169	Switch Box		1
70	JML-70	Strain Relief Bushing	6N3-4	2
71	TS-1540021	Hex Nut	M4	4
72	JWL1220-172	Cord Clamp		4
73	TS-1532052	Pan Head Screw	M4x16	4
74	JML-74	Cord Protector		1
75	JWL1220-175	Power Cord		1
79	JML-79	Safety Goggles		1
80	JML-80	Rubber Foot		4
81	JML-81	Clamp Nut		2
82	JML-82	Warning Label		1
83	TS-1540031	Hex Nut	M5	2
84	JML-84	Star Washer	M5	2
85	TS-1533062	Pan Head Screw	M5x20	2
86	TS-1523031	Socket Set Screw	M6x10	3
87	JML1014-187	C-Ring	STW-9	1
88	JML1014-188	Spring		1
89	JML1014-189	Index Pin		1
90	TS-0267021	Socket Set Screw	1/4"-20x1/4"	2
91	JML1014-191	Speed Label		1
92	JWL1220-192	Motor Dust Cover		1
93	JWL1220-193	Lift Handle		2
94	JWL1220-194	C-Ring	STW-10	4
95	JWL1220-195	Tool Shelf		1
96	TS-081C032	Pan Head Screw	#10-24x1/2"	9
97	JWL1220-197	Cord Wrap Bracket		2
98	JWL1220-198	Work Lamp		1
99	JWL1220-199	Strain Relief Bushing	SB7R-3	2

Electrical Connections for JWL-1220

