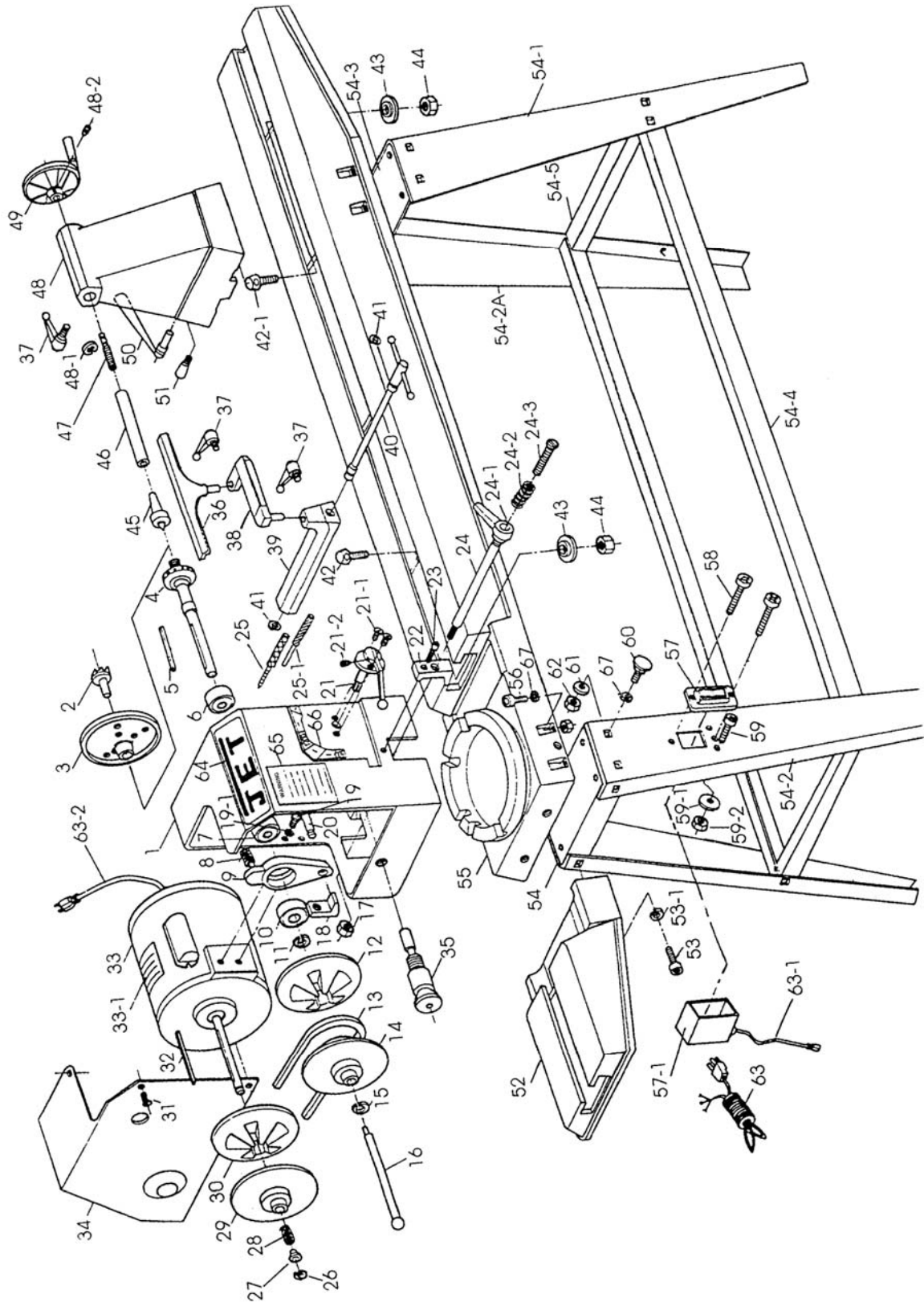


JWL-1236 Parts Breakdown



JWL-1236 Parts List

To order parts or reach our service department, call 1-800-274-6848, Monday through Friday (see our website for business hours, www.waltermeier.com). Having the Model Number and Serial Number of your machine available when you call will allow us to serve you quickly and accurately.

Index No.	Part No.	Description	Size	Qty
1	JWL1236-01W	Headstock		1
2	JWL1236-02	Spur Center		1
3	JWL1236-03	Face Plate	6"	1
4	JWL1236-04	Spindle		1
5	JWL1236-05	Key	4x4x85 mm	1
6	BB-6205ZZ	Ball Bearing	6205ZZ	1
7	BB-6205ZZ	Ball Bearing	6205ZZ	1
8	JWL1236-08	Spring		1
9	JWL1236-09	Shifting Lever Bracket		1
10	BB-6006ZZ	Ball Bearing	6006ZZ	1
11	JWL1236-11	C-Clip	S-25	1
12	JWL1236-12	Spindle Pulley (right)		1
13	VB-M23	V-Belt	3L 230	1
14	JWL1236-14	Spindle Pulley (left)		1
15	JWL1236-15	C-Clip	S-24	1
16	JWL1236-16	Drift Rod		1
17	JWL1236-17	Lock Nut	1/2"	2
18	JWL1236-18	Clamp (left)		1
19	TS-0081031	Hex Cap Screw	5/16"x3/4"	2
19-1	TS-0720081	Lock Washer	5/16"	2
20	JWL1236-20	Rack		1
21	JWL1236-21	Speed Selector Assembly		1
21-1	JWL1236-21-1	Flat Head Machine Screw	10"-24x5/8"	2
21-2	JWL1236-21-2	Socket Set Screw	5/16"-18x3/8"	1
22	JWL1236-22	Clamp (right)		1
23	JWL1236-23	Hex Head Screw		1
24	JWL1236-24	Headstock Lock		1
24-1	JWL1236-24-1	Headstock Lock Handle		1
24-2	JWL1236-24-2	Spring		1
24-3	JWL1236-24-3	Screw		1
25	JWL1236-25A	Index Tool (Threaded)		1
25-1	JWL1236-25-1	Index Tool		1
26	JWL1236-26	C-Clip	S-16	1
27	JWL1236-27	Sleeve		1
28	JWL1236-28	Spring		1
29	JWL1236-29	Motor Pulley (right)		1
30	JWL1236-30	Motor Pulley (left)		1
31	JWL1236-31	Pan Head Screw	3/16"x3/8"	4
32	JWL1236-32	Key	4x4x85 mm	1
33	JWL1236-33	Motor w/ Motor Cord		1
	JWL1236-33A	Motor w/ Motor Cord (after serial #305000)		1
	JWL1236-33CS	Centrifugal Switch		1
	JWL1236-33R	Rotor		1
33-1	JWL1236-33-1	Motor Nameplate		1
34	JWL1236-34	Motor Cover		1
	JWL1236-34A	Motor Cover (after serial #305000)		1
35	JWL1236-35	Index Plunger		1
36	JWL1236-36	Tool Rest	3/4"	1
	JWL1236-36A	Tool Rest (after serial #205000)	1"	1
37	JWL1236-37	Handle		3
38	JWL1236-38	Tool Rest Extension	3/4"	1
	JWL1236-38A	Tool Rest Extension (after serial #205000)	1"	1

Index No.	Part No.	Description	Size	Qty
39	JWL1236-39	Tool Rest Body	3/4"	1
	JWL1236-39A	Tool Rest Body (after serial #205000)	1"	1
40	JWL1236-40	Eccentric Rod		1
41	JWL1236-26	C-Clip	S-16	2
42	JWL1236-42	Bolt (Toolrest)		1
42-1	JWL1236-42-1	Bolt (Tailstock)		1
43	JWL1236-43	Clamp		2
44	TS-0650081	Nylon Lock Nut	3/4"	2
45	JWL1236-45	Live Center		1
46	JWL1236-46	Tail Spindle		1
47	JWL1236-47	Tailstock Screw		1
48	JWL1236-48W	Tailstock		1
	JWL1236-48AW	Tailstock Assembly		1
48-1	JWL1236-48-1	C-Ring	S-16	1
48-2	JWL1236-48-2	Set Screw		1
49	JWL1236-49	Handwheel		1
50	JWL1236-50	Tailstock Lock Handle		1
51	JWL1236-51	Handle Stop		1
52	JWL1236-52W	Bed Extension		1
53	TS-0209051	Hex Socket Cap Screw	3/8"-16x1"	2
53-1	TS-0720091	Lock Washer	3/8"	2
54	JWL1236-54W	Stand Leg (left rear)		1
54-1	JWL1236-54-1W	Stand Leg (right front)		1
54-2	JWL1236-54-2W	Stand Leg (left front - switch)		1
54-2A	JWL1236-54-2AW	Stand Leg (right rear)		1
54-3	JWL1236-54-3W	Stand Top		2
54-4	JWL1236-54-4W	Long Brace		2
54-5	JWL1236-54-5W	Short Brace		2
55	JWL1236-55W	Bed		1
56	TS-0208061	Hex Socket Cap Screw	5/16"-18x1"	8
57	JWL1236-57	Switch (serial #6105922 and lower)		1
	JWL1236-57A	Switch (serial #6115923 and higher)		1
	JWL1236-57B	Switch Assembly CP (serial #6105922 and lower)		1
	JWL1236-57C	Switch Assembly CP (serial #6115923 and higher)		1
57-1	JWL1236-57-1	Switch Box		1
58	JWL1236-58	Screw	M4x24	2
59	JWL1236-59	Screw	3/16"x3/8"	2
59-1	JWL1236-59-1	Key Washer		2
59-2	JWL1236-59-2	Nut	3/16"	2
60	TS-0152011	Carriage Bolt	5/16"x1"	24
61	TS-0680031	Washer	5/16"	24
62	TS-0561021	Nut	5/16"	24
63	JWL1236-63	Power Cord		1
63-1	JWL1236-63-1	Power Cord (switch to motor - serial #6105922 and lower)		1
	JWL1236-63-1A	Power Cord (switch to motor - serial #6115923 and higher)		1
63-2	JWL1236-63-2	Motor Cord (serial #6105922 and lower)		1
	JWL1236-63-2A	Motor Cord (serial #6115923 and higher)		1
64	JWL1236-64	JET Label		1
65	JWL1236-65	Warning Label		1
66	JWL1236-66	Speed Label		1
67	TS-0720081	Lock Washer	5/16"	32
	JWL1236-C	Capacitor (not shown-100MFD,125VAC)		1

Electrical Connections

