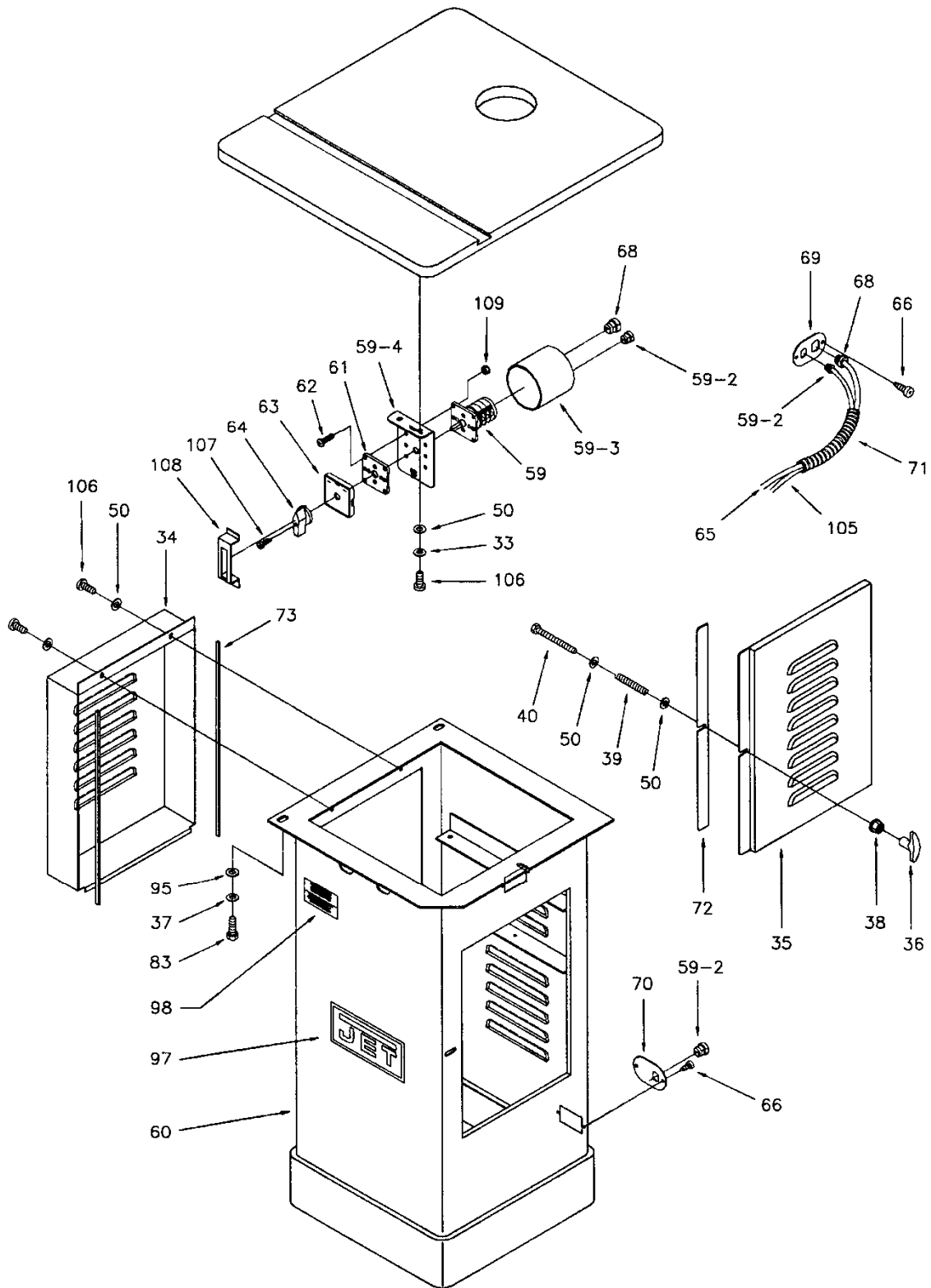


Cabinet Breakdown



Parts List

Index No.	Part No.	Description	Size	Qty
1	JWS22CS-1	Table		1
2	JWS22CS-2	Spindle Housing		1
2-1	JWS22CS-2-1	Spindle Locking Mandrel		1
2-2	JWS22CS-2-2	Lock Washer	M18.5	1
3	JWS18HO-3	Cutter Spindle Bracket		1
4	BB-6005ZZ	Ball Bearing		2
4-1	JWS18HO-4-1	Wave Washer		1
5	JWS18HO-5	Snap Ring		1
6	JWS22CS-6	Pulley		1
7	TS-0561082	Hex Nut	3/4x16UNF	1
8	JWS22CS-8	Main Spindle		1
8-1	JWS18HO-8-1	Shaft (1/2)		1
	JWS18HO-8-1A	Shaft ** (3/4-not shown)		1
9	JWS22CS-9	Key		1
10	JWS18HO-10	Snap Ring (spindle housing)		1
10-1	JWS18HO-10-1	Snap Ring (main spindle)		1
10-2	OS-25478	Oil Seal		1
11	JWS18HO-11	Hex Nut (spindle)		1
11-1	JWS18HO-11-1	Table Ring (serial # 0092192 and lower)		1
11-1	JWS18HO-11-1N	Table Ring (serial # 0092193 and higher)		1
11-2	JWS18HO-11-2	Table Ring		1
11-3	JSL10TS-7	Phillip's Screw	1/4"x5/8"	3
12	JWS18HO-12	Spacer (1/2)	80	1
	JWS18HO-12A	Spacer ** (3/4-not shown)	1.00	1
13	JWS18HO-13	Spacer (1/2)	60	1
	JWS18HO-13A	Spacer ** (3/4-not shown)	75	1
14	JWS18HO-14	Spacer (1/2)	40	1
14A	JWS18HO-14A	Spacer ** (3/4-not shown)	0.50	1
15	JWS18HO-15	Fixed Bushing (1/2)		1
	JWS18HO-15A	Fixed Bushing ** (3/4-not shown)		1
16	JWS18HO-16	Washer (1/2)		1
	JWS18HO-16A	Washer ** (3/4-not shown)		1
17	TS-0208061	Hex Cap Bolt (1/2)	5/16x1	1
	TS-0209051	Hex Cap Bolt ** (3/4-not shown)	3/8x1	1
18	JWS18HO-18	Quill		1
18-1	JWS18HO-18-1	Nut	1/2-20 UNF	1
19	TS-0561021	Hex Nut	5/16	1
20	TS-0051031	Hex Head Bolt	5/16x5/8	1
21	JWS18HO-21	Lock Washer	1/2	3
22	TS-0070041	Hex Cap Bolt	1/2x1-3/4	3
23	JWS22CS-23	Lock Bar		1
25	JSL10TS-6	Guide Plate		1
26	JSL10TS-3	Miter Gauge Body		1
27	JWS18HO-27	Plate		1
27-1	JWS18HO-27-1	Flat Head Screw	3/16x1/4	1
27-2	JWS18HO-27-2	Washer (special)		1
28	JWS18HO-28	Washer		1
29	JSL10TS-1	Knob		1
30	JWS18HO-30	Screw	3/16x1/4	1
31	JWS22CS-31	Spring Pin	M3x19	1
32	JWS22CS-32	Lock Handle		1
33	TS-0680041	Lock Washer	1/4	2
34	JWS22CS-34	Motor Cover		1
35	JWS22CS-35	Cabinet Cover		1

Note: (1/2) and (3/4) refer to 1/2" or 3/4" spindles

Index No.	Part No.	Description	Size	Qty
36	JTAS10-45	Handle		1
37	TS-0720091	Lock Washer	3/8	4
38	TS-1540021	Hex Nut	M6	1
39	JTAS10-41	Spring		1
40	TS-1482101	Hex Cap Screw	M6x50	1
41	JWS22CS-41	Motor Plate		1
42	TS-0208061	Hex Cap Bolt	5/16x1	6
43	TS-0680031	Washer	5/16	9
44	TS-0720081	Lock Washer	5/16	8
45	TS-0561021	Hex Nut	5/16	6
46	JWS22CS-46	Motor		1
47	JWS18HO-47	Motor Pulley		1
48	JWS18HO-48	Key		1
49	JWS18HO-49	Set Screw	1/4x3/8	1
50	JWS22CS-50	Washer	5/16x18	5
51	TS-0081031	Hex Cap Screw	5/16x3/4	2
52	JWS22CS-52	Motor Plate Bracket		1
53	VB-M23	V-Belt		1
54	JWS22CS-54	Feed Bar		1
55	JWS18HO-55	Spring Pin	M3x18	1
56	JWS18HO-56	Handle		1
57	TS-0680021	Washer	1/4	1
58	TS-0050021	Hex Cap Bolt	1/4 x 5/8	1
59	JWS18HO-59	Switch Assembly (includes #61,62,63,64,107,109)		1
59-2	JWS22CS-59-2	Strain Relief		3
59-3	JWS18HO-59-3	Switch Cover		1
59-4	JWS22CS-59-4	Plate		1
60	JWS22CS-60	Cabinet		1
61	JWS18HO-61	Plate		1
62	JWS18HO-62	Screw		4
63	JWS18HO-63	Switch Plate		1
64	JWS18HO-64	Switch Handle		1
65	JWS22CS-65	Power Cord		1
66	JTAS10-28	Tap Screw	M5x10	4
67	JWS22CS-67	Draw Bar	5/16x6	1
67-1	JWS22CS-67-1	Taper Nut		1
68	JWS22CS-68	Strain Relief		2
69	JWS22CS-69	Cord Plate		1
70	JTAS10-47	Cord Clamp Plate		1
71	JWS22CS-71	Power Cord Sleeve		1
72	JWS22CS-72	Foam Strip		1
73	JWS22CS-73	Rubber Padding		2
74	JWS18HO-74	Fence (right)		1
74-1	JWS18HO-74-1	Fence (left)		1
75	JWS18HO-75	Guide Bar		2
76	TS-0680031	Washer	5/16	2
77	JWS18HO-77	Flat Head Machine Screw	5/16x1-3/4	2
77-1	TS-0561021	Hex Nut	5/16	2
78	JWS18HO-78	Lead Screw		2
79	TS-0050031	Hex Cap Bolt	1/4x3/4	2
80	JWS18HO-80	Guide Plate		2
81	JWS18HO-81	Slide Block		2
82	JWS18HO-82	Guide Plate Support		2
83	TS-0060051	Hex Cap Bolt	3/8x1	1

Index No.	Part No.	Description	Size	Qty
84	JWS18HO-84	Safety Shield		1
85	JWS18HO-85	Fence Body		1
86	TS-0209021	Hex Socket Cap Bolt	3/8x5/8	2
87	JWS18HO-87	Lock Knob	3/8	2
88	JWS18HO-88	Knob		2
89	TS-0680061	Washer	1/2	2
90	JWS18HO-90	Lock Handle		2
90-1	JWS18HO-90-1	Handle	1/4	2
90-2	JWS18HO-90-2	Round Knob	1/4	4
91	TS-0050051	Hex Cap Bolt	1/4x1/2	2
92	JWS18HO-92	Safety Shield Mount		1
93	TS-0680031	Washer	5/16	2
94	JWS18HO-94	Knob	5/16x1	2
95	TS-0680041	Washer	3/8	1
96	JWS18HO-96	Butterfly Nut		1
97	JWS18HO-97	Label		1
98	JWS18HO-98	Warning Label		1
99	JWS18HO-99	Motor Name Plate		1
100	JWS18HO-100	Stop Pin		2
101	JWS18HO-101	Dust Chute		1
102	JWS22CS-102	Spanner Wrench **		1
103	JWS22CS-103	Collet w/Nut**	1/4	1
104	JWS22CS-104	Collet w/Nut**	1/2	1
105	JWS22CS-105	Motor Cord		1
106	TS-0207021	Hex Cap Bolt	1/4x1/2	4
107	JWS18HO-107	Screw		1
108	JWS22CS-108	Lock Out Bracket		1
109	JWS18HO-109	Nut		6
110	JWS22CS-110	I.D. Label		1
111	JWS22CS-111	Label (spindle direction)		1
112	JWS22CS-112	Label (spindle lock)		1
	JWS22CS-MGCP	Miter Gauge Complete (includes # 25 thru 30)		1
	JWS22HO-HK	Hardware Kit (shaper - not shown)		1
	JWS18HO-FACP	Fence Assy Complete (not shown)		1
	JWS22CS-AP	Accessory Package		1

** included in JWS22CS-HK, Hardware Kit

Electrical Schematic for the Forward/Reverse Switch

