

Parts and Assembly

JSSG-10 Wet Sharpener Parts List

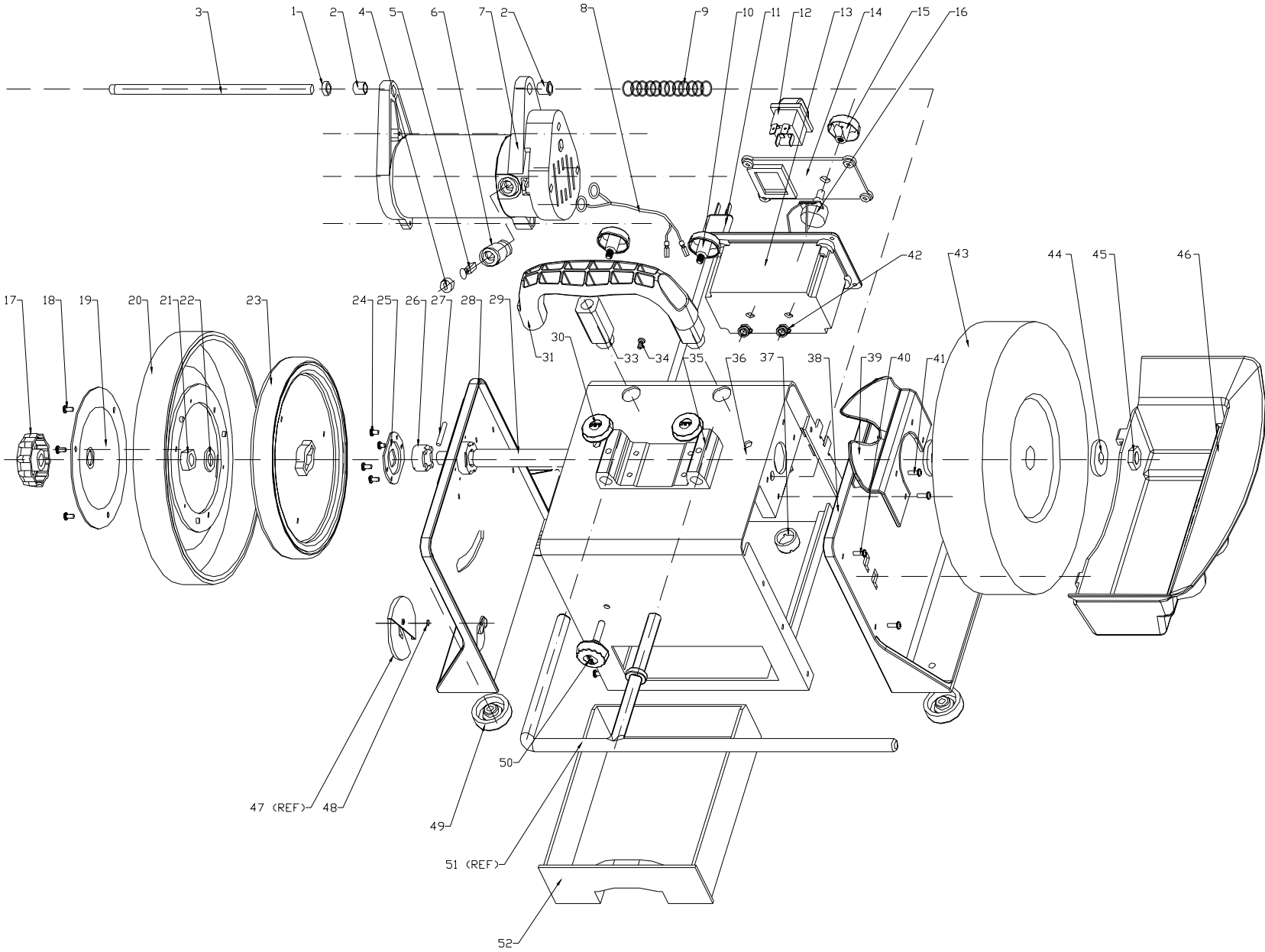
Stock # 708015

Index No	Part No	Description	Size	Qty
1	708015-101	Spacer		1
2	708015-102	Bushing		2
3	708015-103	Motor Mount Shaft		1
4	708015-104	Carbon Brush Cover		2
5	708015-105	Carbon Brush		2
6	708015-106	Carbon Brush Holder		2
7	708015-107	Motor (Complete)		1
8	708015-108	Motor Wire		1
9	708015-109	Pressure Spring		1
10	708015-110	Knob w/M6 Bolt Insert		2
11	708015-111	Power Cord with Plug		1
12	708015-112	Waterproof On/Off Switch		1
13	708015-113	Switch Box		1
14	708015-114	Switch Box Cover		1
15	708015-115	Speed Switch Knob w/Indicator		1
16	708015-116	Speed Adjusting Switch Set		1
17	708015-117	Honing Wheel Lock Knob		1
18	708015-118	Self-Tapping Screw	ST4x6	3
19	708015-119	Honing Wheel End Cover		1
20	708043	Honing Wheel with Leather		1
21	708015-121	Lock Nut		1
22	TS-2360121	Flat Washer	M12	2
23	708015-123	Drive Wheel		1
24	708015-124	Self-Tapping Screw	ST3x4	8
25	708015-125	Slide Bearing Cover		2
26	708015-126	Slide Bearing		2
27	708015-127	Pin		1
28	708015-128	Left Machine Support		1
29	708015-129	Drive Shaft		1
30	708015-130	Horizontal Support Knob		2
31	708015-131	Handle		1
	TS-1504051	Socket Head Cap Screw (For Handle, not shown)	M8x25	2
	TS-1550061	Flat Washer (For Handle, not shown)	M8	2
	TS-1541031	Nylon Insert LockNut (For Handle, not shown)	M8	2
33	708015-133	Vertical Support		2
34	708015-134	Ground Screw		1
35	708015-135	Horizontal Support		1
36	708015-136	Machine Body		1
37	708015-137	Vertical Support Lock Nut		2
38	708015-138	Right Machine Support		1
39	708015-139	Water Shield		1
40	708015-140	Pan Head Machine Screw	M5x6	17
41	TS-1533032	Pan Head Machine Screw	M5x10	13
42	708015-142	Cord Strain Relief		4
43	708042	Stone Wheel		1
44	708015-144	Washer	30mm OD	2
45	TS-1540081	Hex Nut	M12	1
46	708015-146	Water Tank		1
47	708041	AMD-2: Chisel Angle Jig		1
48	708015-148	Cylinder Magnet		1

JSSG-10 Wet Sharpener Parts List (Continued)

Index No	Part No	Description	Size	Qty
49	708015-149	Rubber Foot		4
50	708015-150	Torque Adjusting Knob		1
51	708039	SA-1: Support Arm Assembly		1
52	708015-152	Drawer		1
	708017	SG-1: Stone Grader (Not Shown)		1
	708029	SEJ-1: Straight Edge Jig (Not Shown)		1
	708033	AMD-1: Angle Measuring Device (Not Shown)		1
	708023	HC: Honing Compound (Not Shown)		1

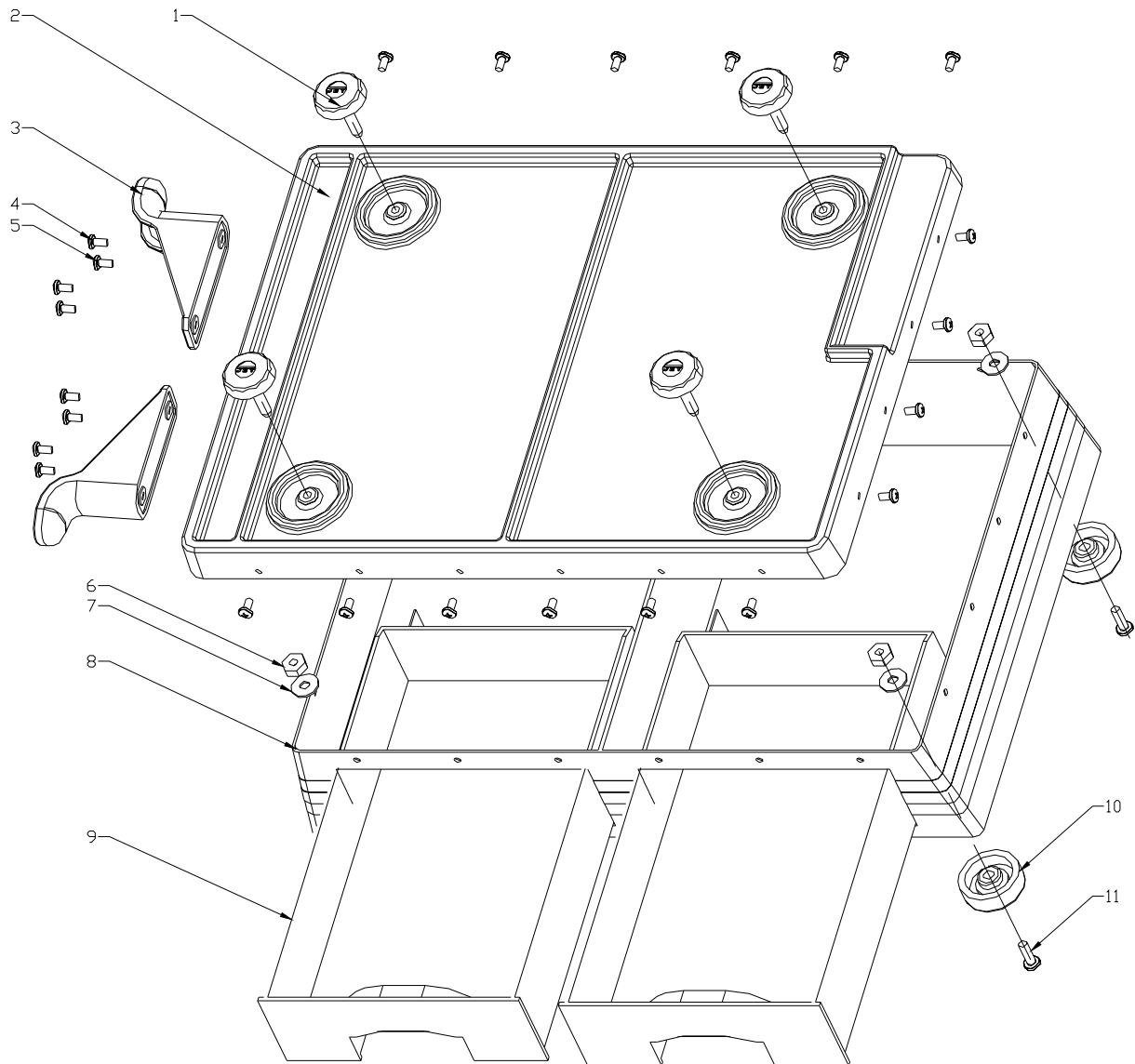
JSSG-10 Wet Sharpener Assembly Drawing



Two Drawer Base Parts List

Stock # 708016

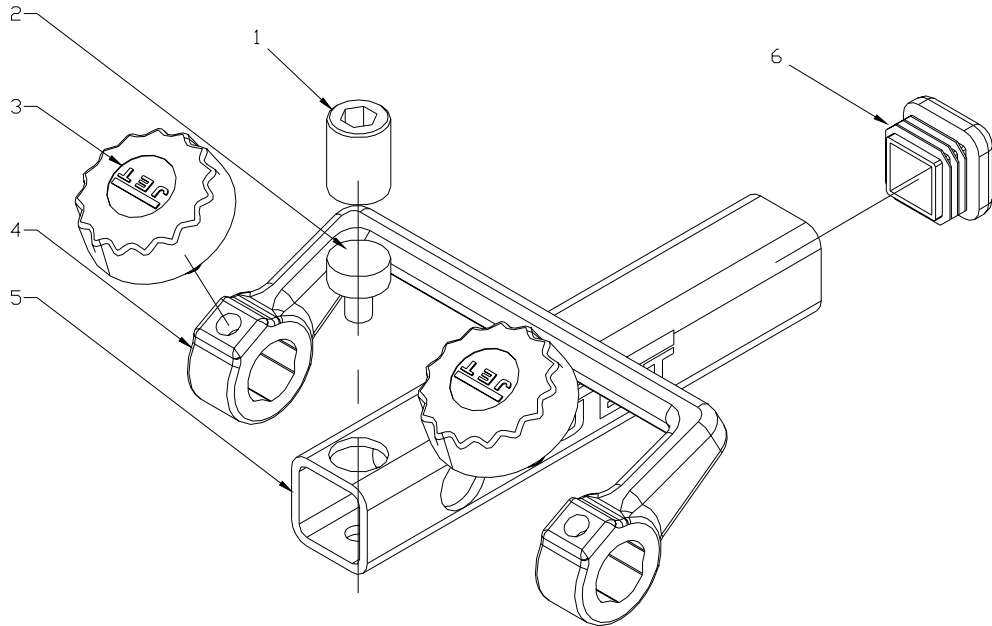
Index No	Part No	Description	Size	Qty
1	708016-101	Knob		4
2	708016-102	Base Top Cover		1
3	708016-103	Cord Wrap Bracket		2
4	708016-104	Self-Tapping Screw	ST4x10	4
5	TS-1532032	Pan Head Machine Screw	M4x10	20
6	TS-1540041	Hex Nut	M6	4
7	TS-1550041	Flat Washer	M6	4
8	708016-108	Base		1
9	708016-109	Drawer		2
10	708015-149	Rubber Foot		4
11	TS-1534052	Pan Head Machine Screw	M6x16	4



DT-1 Diamond Truing Tool

Stock # 708018

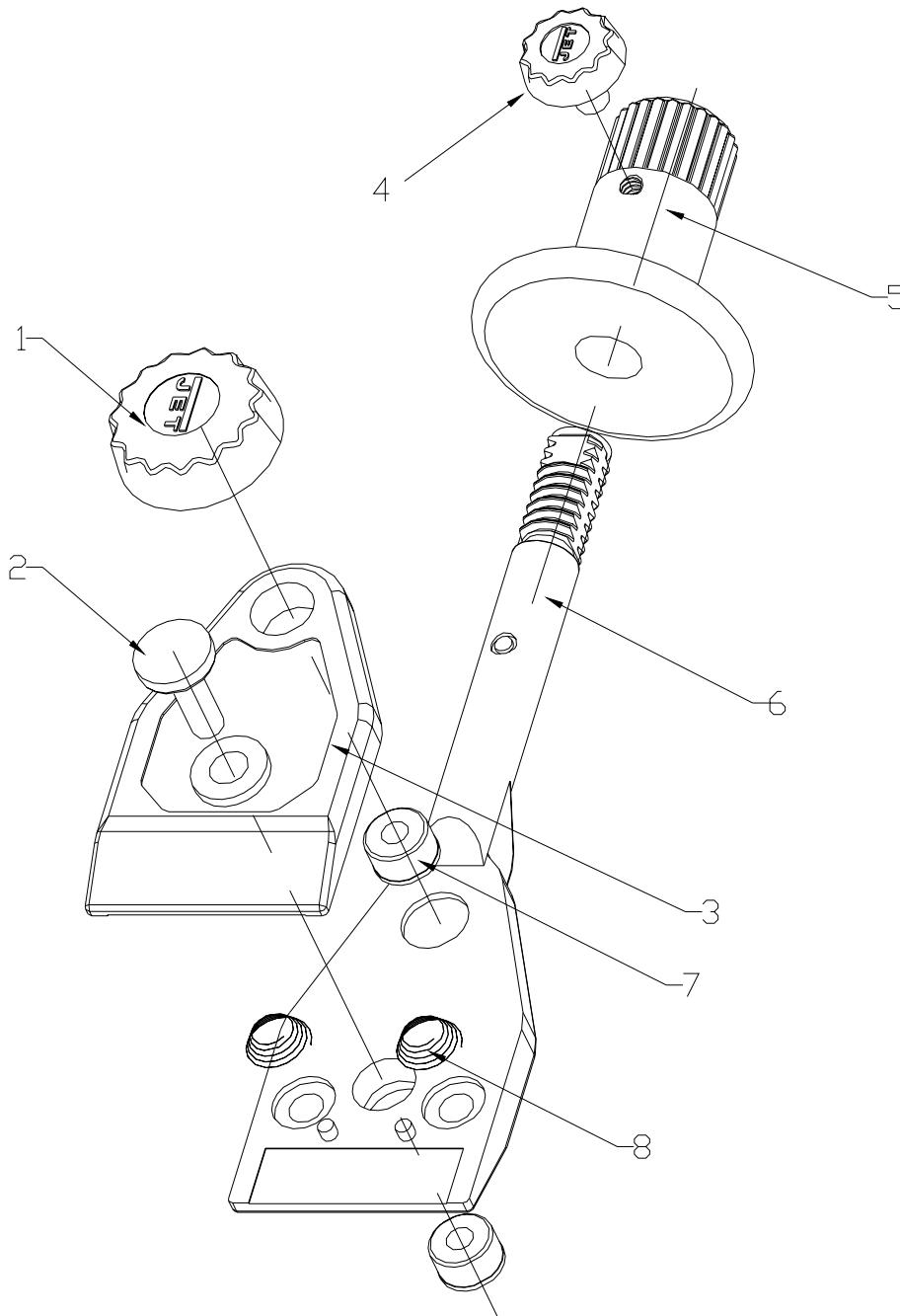
Index No	Part No	Description	Size	Qty
1	708018-101	Lock Screw		1
2	708018-102	Diamond Tip		1
3	708015-110	Knob w/M6 Bolt Insert		2
4	708018-104	Holder		1
5	708018-105	Square Tube		1
6	708018-106	Tube End Cover		1



KJ-1 Knife Jig

Stock # 708019

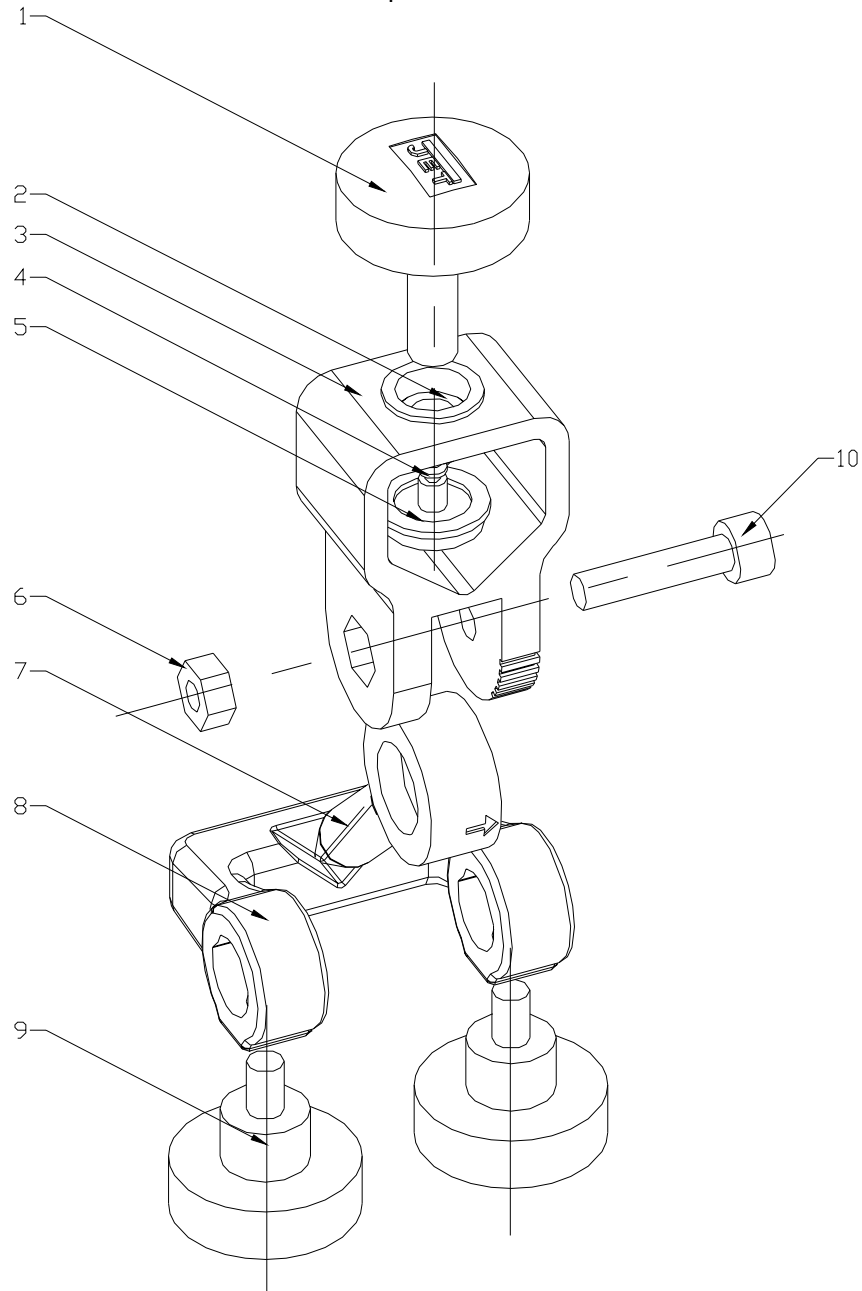
Index No	Part No	Description	Size	Qty
1	708019-101	Knob		1
2	708019-102	Adjusting Knob		1
3	708019-103	Top Plate		1
4	708019-104	Knob		1
5	708019-105	Handle		1
6	708019-106	Bottom Plate		1
7	708019-107	Brass Insert		2
8	708019-108	Cone Spring		2



GJ-1 Gouge Jig

Stock # 708020

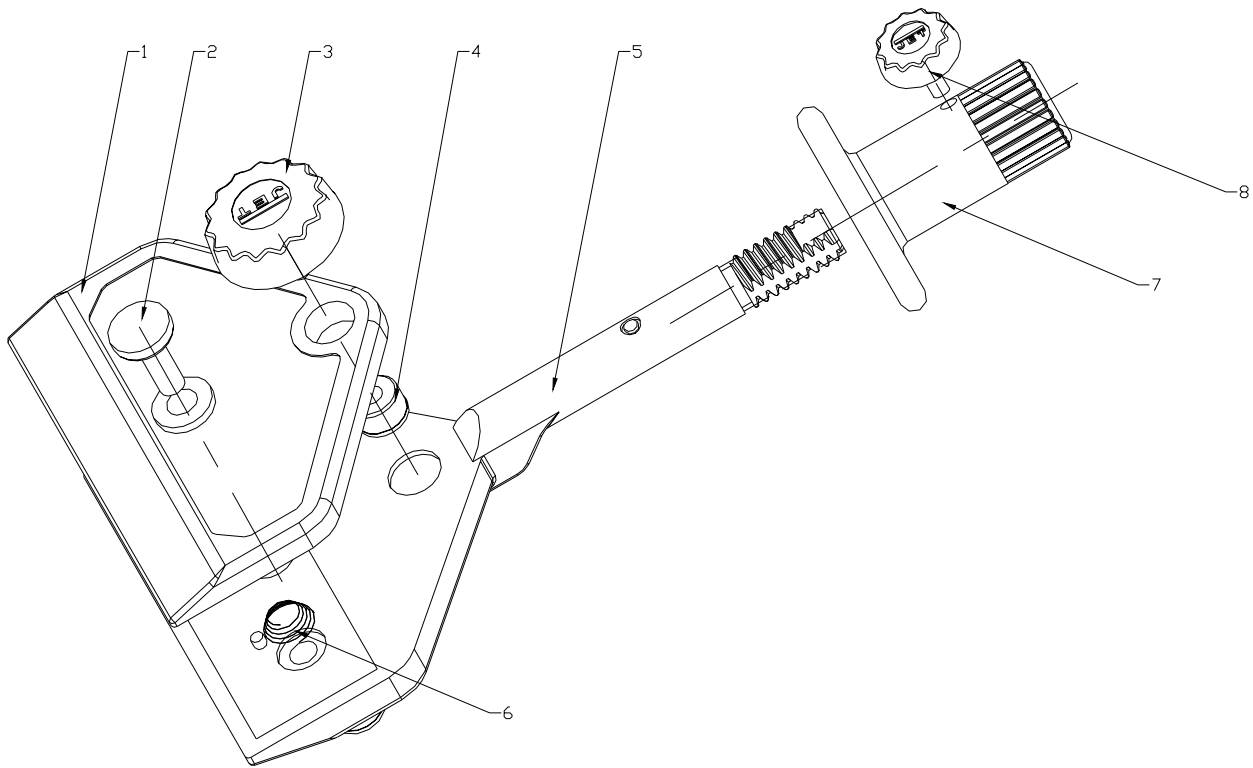
Index No	Part No	Description	Size	Qty
1	708020-101	Knob		1
2	708020-102	Brass Insert		1
3	708020-103	Body		1
4	708020-104	Rubber Ring		1
5	708020-105	Brass End Piece		1
6	TS-1540041	Hex Nut	M6	1
7	708020-107	Pivot		1
8	708020-108	Holder		1
9	708015-110	Knob w/M6 Bolt Insert		2
10	TS-1503061	Socket Head Cap Screw	M6x25	1



LKJ Long Knife Jig

Stock # 708021

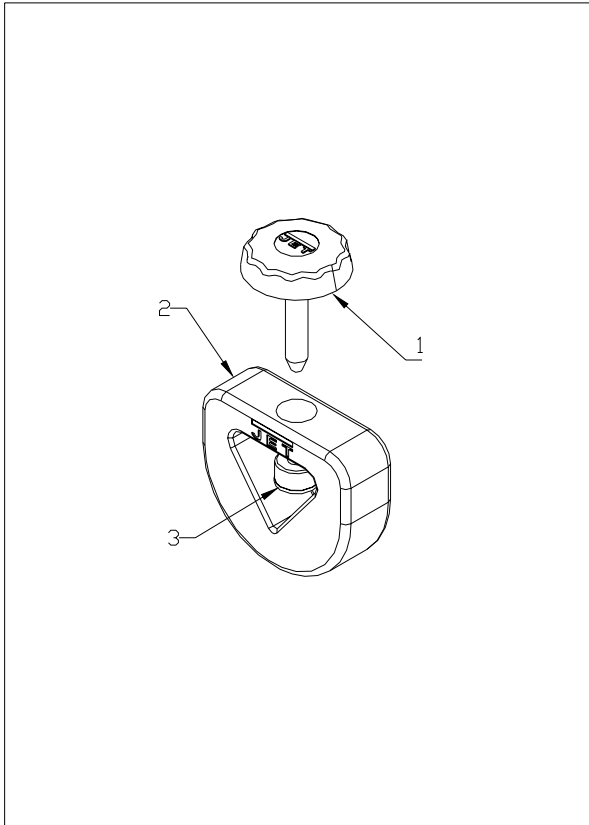
Index No	Part No	Description	Size	Qty
1	708021-101	Top Plate		1
2	708019-102	Adjusting Knob		1
3	708019-101	Knob		1
4	708019-107	Brass Insert		2
5	708021-105	Bottom Plate		1
6	708019-108	Cone Spring		2
7	708019-105	Handle		1
8	708019-104	Knob		1



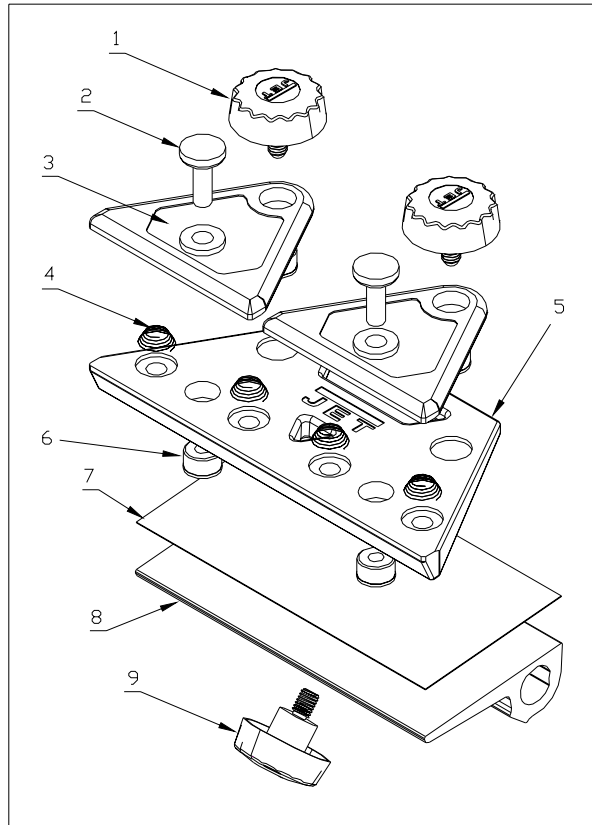
STJ-1 Carving Tool Jig

Stock # 708025

Index No	Part No	Description	Size	Qty
1	708016-101	Knob		1
2	708025-102	Body		1
3	708025-103	Brass Insert		1



STJ-1 – Short Tool Jig



SJ-1 – Scissors Jig

SJ-1 Scissors Jig

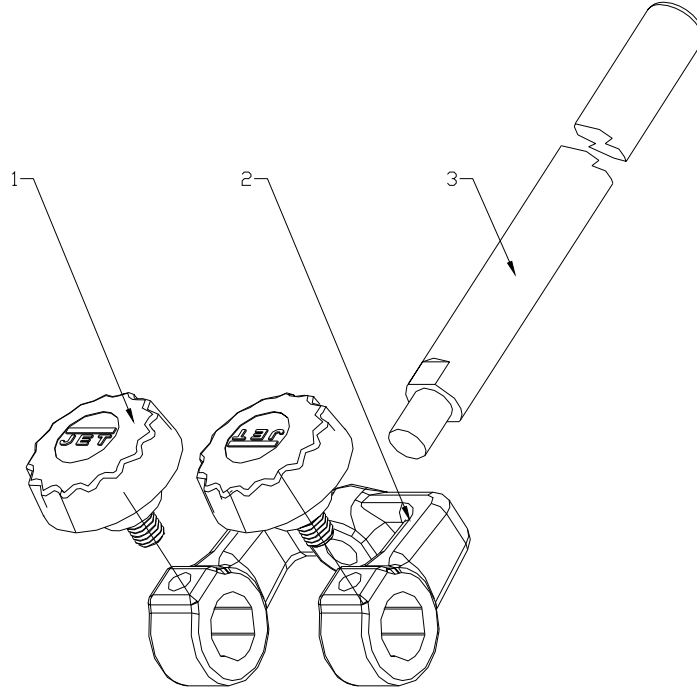
Stock # 708026

Index No	Part No	Description	Size	Qty
1	708019-101	Knob		2
2	708019-102	Adjusting Knob		2
3	708026-103	Top Plate		2
4	708019-108	Cone Spring		4
5	708026-105	Bottom Plate		1
6	708019-107	Brass Insert		4
7	708026-107	Plastic Slide Sheet		1
8	708026-108	Scissors Jig Rest		1
9	708015-110	Knob w/M6 Bolt Insert		1

SWGJ-1 Side Wheel Grinding Jig

Stock # 708027

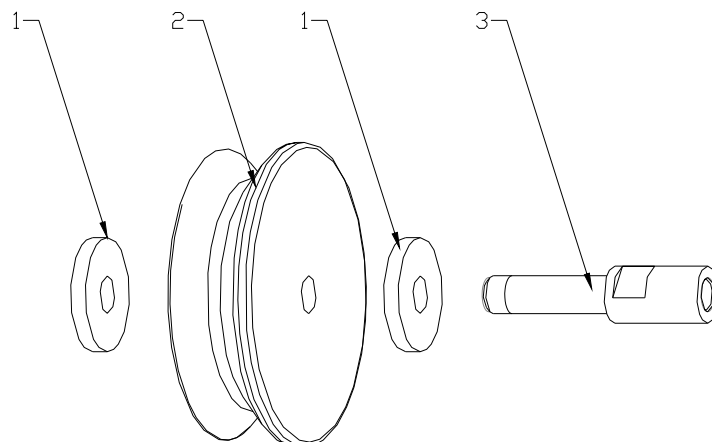
Index No	Part No	Description	Size	Qty
1	708015-110	Knob w/M6 Bolt Insert		2
2	708027-102	Holder		1
3	708027-103	Bar		1



PLH-1 Profiled Leather Honing Wheel

Stock # 708028

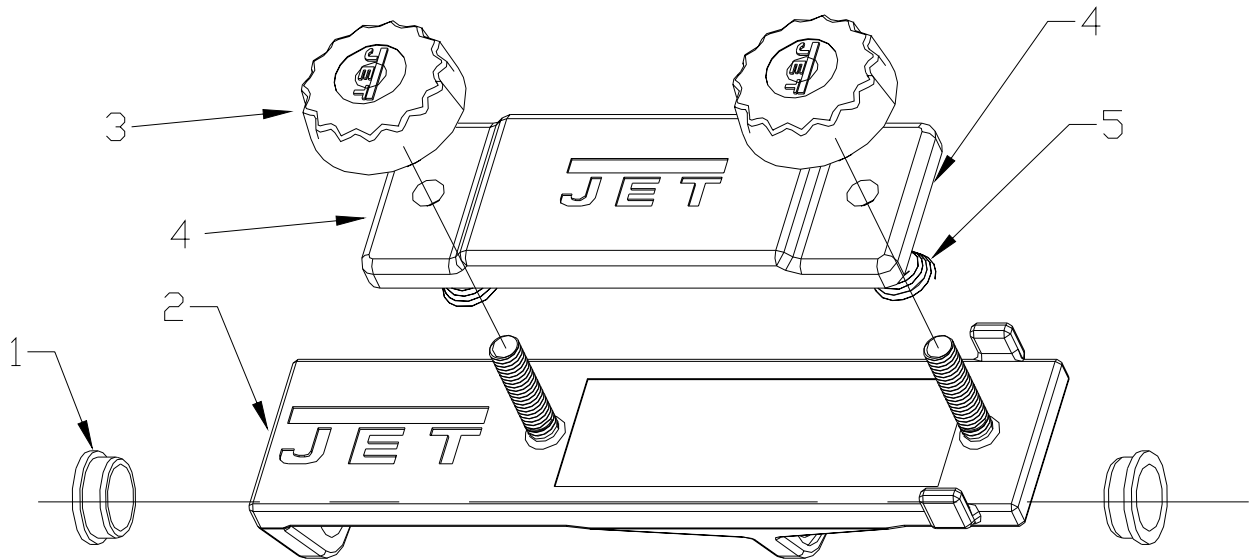
Index No	Part No	Description	Size	Qty
1	708028-101	Washer	35mm OD	2
2	708028-102	Leather Wheel		1
3	708028-103	Shaft		1



SEJ-1 Straight Edge Jig

Stock # 708029

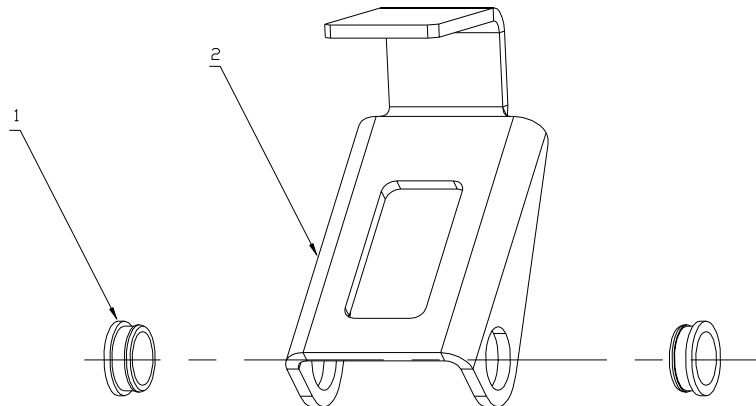
Index No	Part No	Description	Size	Qty
1	708029-101	Bushing		2
2	708029-102	Bottom Plate		1
3	708029-103	Knob		2
4	708029-104	Top Plate		1
5	708019-108	Cone Spring		2



AJ-1 Axe Jig

Stock # 708031

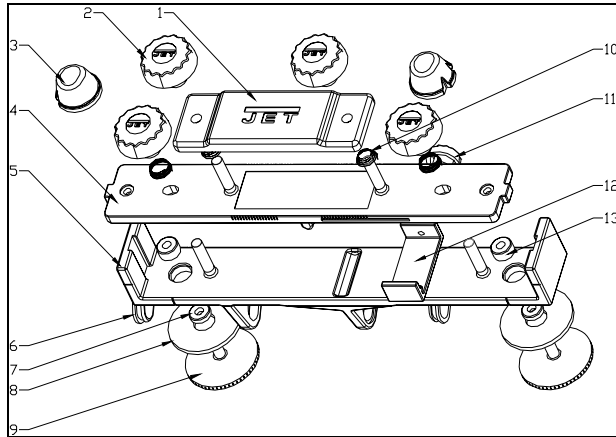
Index No	Part No	Description	Size	Qty
1	708029-101	Bushing		2
2	708031-102	Axe Holder		1



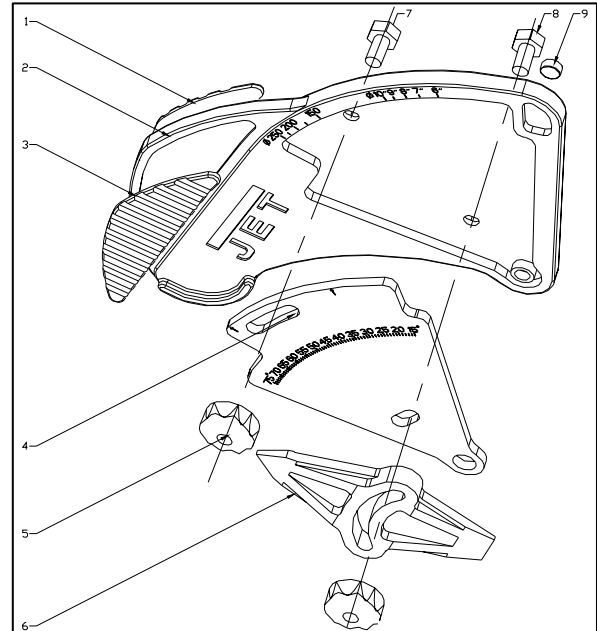
PCJ-1 Plane Camber Jig

Stock # 708032

Index No	Part No	Description	Size	Qty
1	708029-104	Top Plate		1
2	708029-103	Knob		4
3	708032-103	Rubber Rest		2
4	708032-104	Middle Plate		1
5	708032-105	Bottom Plate		1
6	708029-101	Bushing		2
7	708032-107	Lock Plate Brass Insert		2
8	708032-108	Lock Plate		2
9	708032-109	Adjusting Screw		2
10	708019-108	Cone Spring		4
11	708032-111	Knob		1
12	708032-112	Slide Plate		1
13	708032-113	Brass Insert		2



PCJ-1 Plane Camber Jig



AMD-1 Angle Measuring Device

AMD-1 Angle Measuring Device

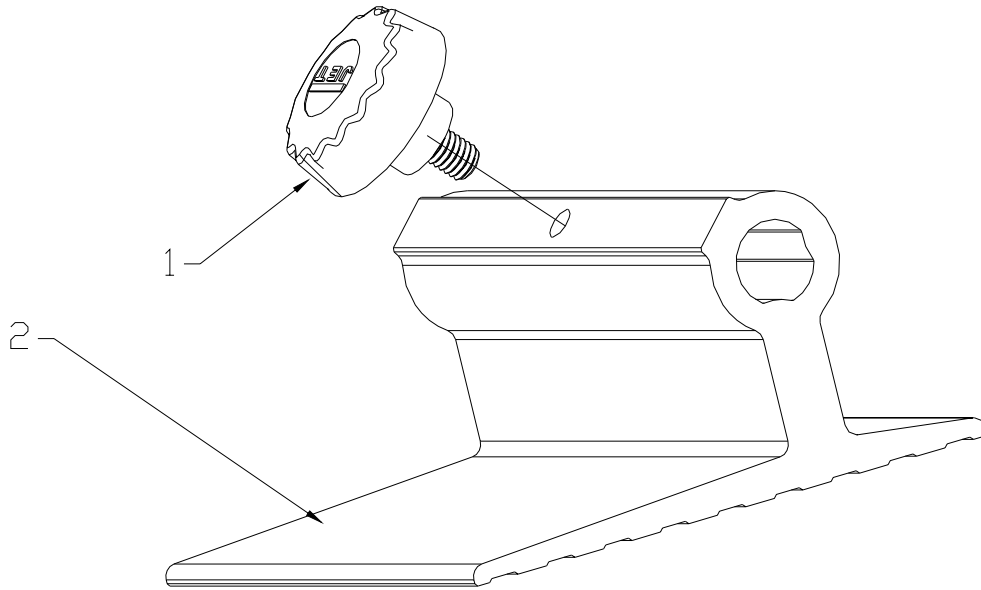
Stock # 708033

Index No	Part No	Description	Size	Qty
1	708033-101	Bottom Rubber Grip		1
2	708033-102	Angle Measuring Body		1
3	708033-103	Top Rubber Grip		1
4	708033-104	Angle Measuring Dial		1
5	708033-105	Knob		2
6	708033-106	Indicator		1
7	708033-107	Hex Bolt	M4x8	1
8	708033-108	Hex Bolt	M4x14	1
9	708033-109	Cylinder Magnet		1

TR-1 Tool Rest

Stock # 708034

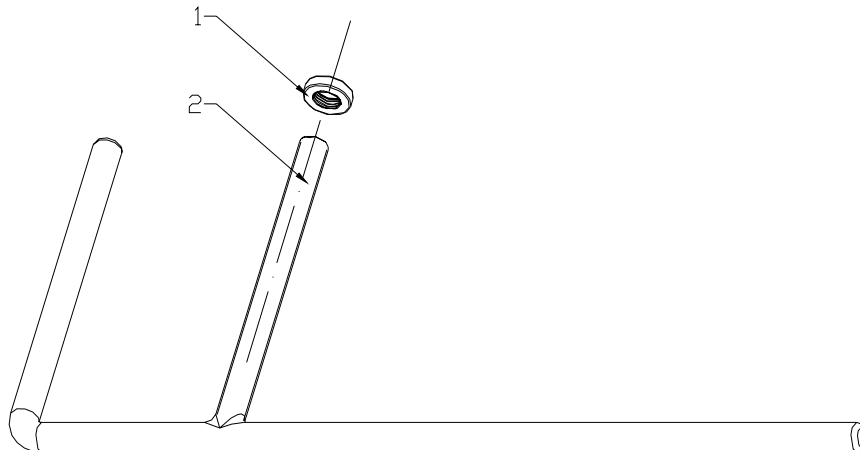
Index No	Part No	Description	Size	Qty
1	708015-110	Knob w/M6 Bolt Insert		1
2	708034-102	Tool Rest		1



SA-1 Support Arm Assembly

Stock # 708039

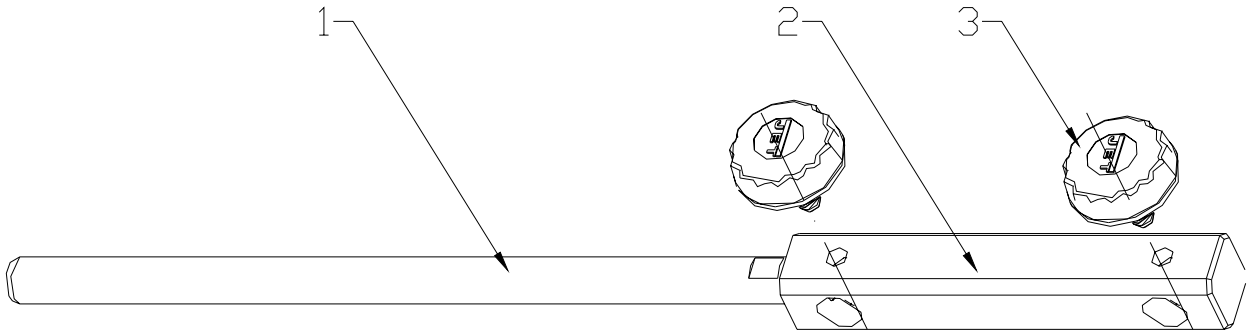
Index No	Part No	Description	Size	Qty
1	708039-101	Support Arm		1
2	708039-102	Adjusting Nut		1



SAE-1 Support Arm Extension Assembly

Stock # 708040

Index No	Part No	Description	Size	Qty
1	708040-101	Extension Bar		1
2	708040-102	Extension Bar Base		1
3	708015-110	Knob w/M6 Bolt Insert		2



Wiring Diagram

