

# Parts

## Ordering Replacement Parts

To order parts or reach our service department, call 1-800-274-6848 Monday through Friday (see our website for business hours, [www.waltermeier.com](http://www.waltermeier.com)). Having the Model Number and Serial Number of your machine available when you call will allow us to serve you quickly and accurately.

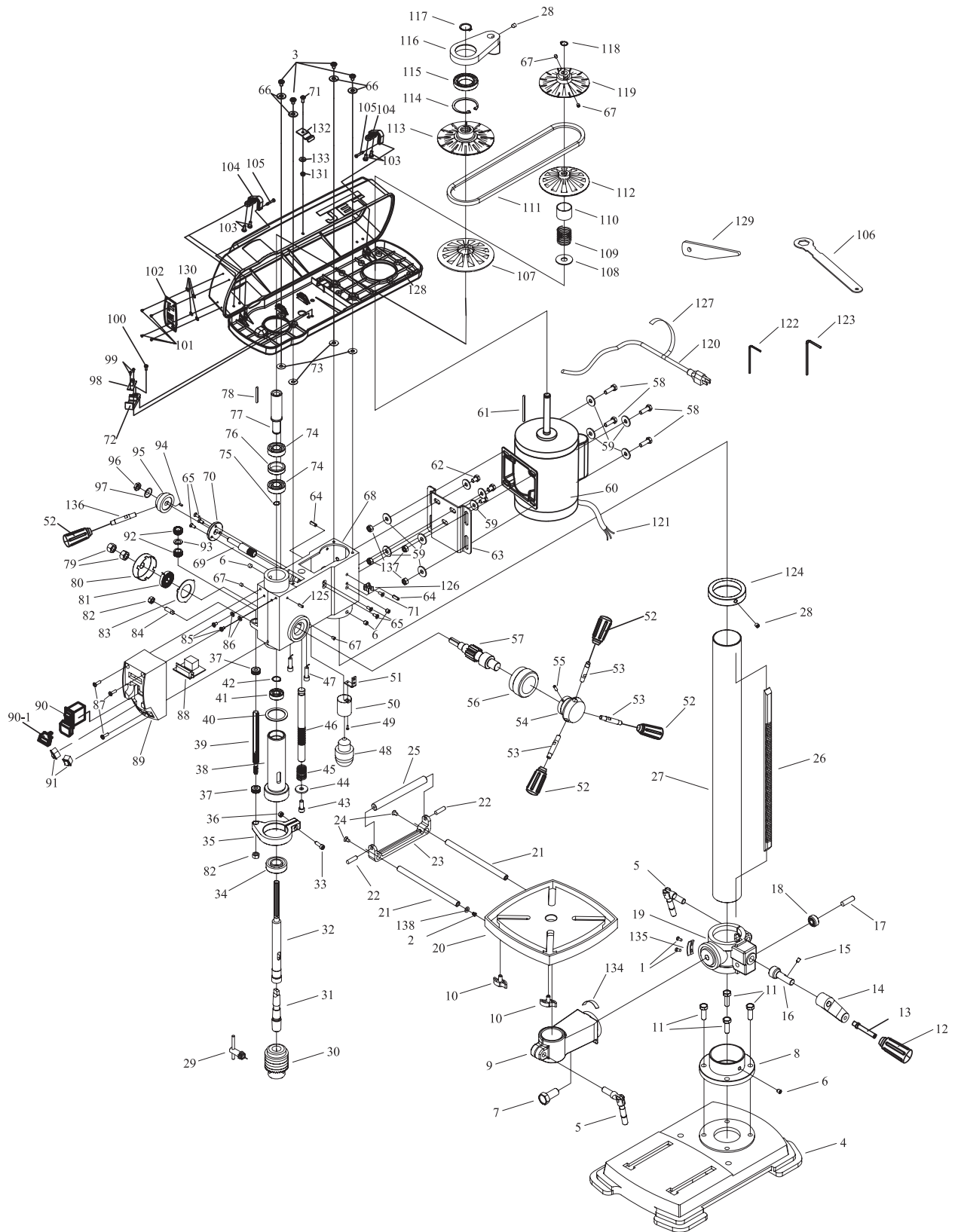
## Parts List

Index No	Part No	Description	Size	Qty
1.....	TS-2284082.....	Pan Head Machine Screw .....	M4x8.....	2
2.....	TS-1482011.....	Hex Cap Screw .....	M6x10.....	1
3.....	TS-2286252.....	Pan Head Machine Screw .....	M6x25.....	4
4.....	JDP12-4.....	Base.....		1
5.....	JDP12-5.....	Lock Handle .....		2
6.....	TS-1524011.....	Set Screw.....	M8x8.....	4
7.....	TS-2213351.....	Hex Cap Screw .....	M16x35.....	1
8.....	JDP12-8.....	Column Support .....		1
9.....	JDP12-9.....	Table Arm.....		1
10.....	JDP12-10.....	Locking Knob.....		2
11.....	TS-1491041.....	Hex Cap Screw .....	M10x30.....	4
12.....	JDP12-12.....	Crank Arm Handle Grip .....		1
13.....	JDP12-13.....	Crank Arm Shaft.....		1
14.....	JDP12-14.....	Crank Arm.....		1
15.....	TS-1523031.....	Set Screw.....	M6x10.....	1
16.....	JDP12-16.....	Worm Shaft.....		1
17.....	JDP12-17.....	Gear Pin.....		1
18.....	JDP12-18.....	Helical Gear .....		1
19.....	JDP12-19.....	Table Support.....		1
20.....	JDP12-20.....	Table.....		1
21.....	JDP12-21.....	Guide Bar.....		2
22.....	JDP12-22.....	Screw .....		2
23.....	JDP12-23.....	Roller Support .....		1
24.....	TS-1534032.....	Pan Head Machine Screw .....	M6x10.....	2
25.....	JDP12-25.....	Roller .....		1
26.....	JDP12-26.....	Rack.....		1
27.....	JDP12-27.....	Column.....		1
28.....	TS-1524021.....	Set Screw.....	M8x10.....	2
29.....	JDP12-29.....	Chuck Key.....		1
30.....	JDP12-30.....	Chuck.....		1
31.....	JDP12-31.....	Chuck Arbor .....		1
32.....	JDP12-32.....	Spindle.....		1
33.....	TS-1534052.....	Pan Head Machine Screw .....	M6x16.....	1
34.....	BB-6204ZZ.....	Ball Bearing.....	80204 / 6204ZZ.....	1
35.....	JDP12-35.....	Lock Collar .....		1
36.....	TS-1540041.....	Hex Nut .....	M6.....	1
37.....	JDP12-37.....	Nut .....		2
38.....	JDP12-38.....	Quill.....		1
39.....	JDP12-39.....	Depth Stop Bolt .....		1
40.....	JDP12-40.....	Quill Gasket.....		1
41.....	JDP12-41.....	Ball Bearing.....	60201.....	1
42.....	JDP12-42.....	Retaining Ring.....	11.....	1
43.....	TS-1490031.....	Hex Cap Screw .....	M8x20.....	1
44.....	JDP12-44.....	Washer.....		1
45.....	JDP12-45.....	Spring.....		1
46.....	JDP12-46.....	Shaft.....		1
47.....	JDP12-47.....	Laser .....		2

Index No	Part No	Description	Size	Qty
48	JDP12-48	LED Bulb		1
49	TS-1531022	Pan Head Machine Screw	M3x8	1
50	JDP12-50	Bulb Socket		1
51	JDP12-51	Socket Support		1
52	JDP12-52	Handle Grip		4
53	JDP12-53	Feed Handle		3
	JDP12-PHA	Pinion and Hub Assembly (includes #54,55,57)		1
54	JDP12-54	Hub		1
55	JDP12-55	Pin	Ø5x16	1
56	JDP12-56	Ring		1
57	JDP12-57	Pinion Shaft		1
58	TS-1490041	Hex Cap Screw	M8x25	4
59	TS-1550061	Flat Washer	M8	11
60	JDP12-60	Motor	1/3HP, 1Ph, 120V	1
	JDP12-60MC	Capacitor	145-174MFD, 125V	1
61	JDP12-61	Key	4x76	1
62	TS-1490011	Hex Cap Screw	M8x12	3
63	JDP12-63	Motor Mount		1
64	JDP12-64	Pin	Ø6x16	2
65	TS-2285121	Flat Head Machine Screw	M5x12	5
66	TS-1550041	Flat Washer	M6	4
67	TS-1523021	Set Screw	M6x8	4
68	JDP12-68	Head		1
69	JDP12-69	Shaft		1
70	JDP12-70	Shaft Plate		1
71	TS-1533032	Pan Head Machine Screw	M5x10	2
72	JDP12-72	Receiver Seat		1
73	JDP12-73	Foam Washer		4
74	JDP12-74	Ball Bearing	60203 / 6203Z	2
75	JDP12-75	Retaining Ring	17	1
76	JDP12-76	Spacer		1
77	JDP12-77	Pulley Shaft		1
78	JDP12-78	Key	4x60	1
79	JDP12-79	Hex Jam Nut	M12	2
80	JDP12-80	Spring Cap		1
81	JDP12-81	Coil Spring		1
82	TS-1540061	Hex Nut	M8	2
83	JDP12-83	Spring Retainer		1
84	JDP12-84	Set Screw		1
85	JDP12-85	Pan Head Screw	M5x6	2
86	JDP12-86	Washer		2
87	JDP12-87	Pan Head Screw	M5x14	3
88	JDP12-88	Digital Read Out		1
89	JDP12-89	Switch Box		1
90	JDP12-90	On/Off Switch		1
90-1	JDP12-90-1	Switch Safety Key		1
91	JDP12-91	Switch		2
92	JDP12-92	Depth Stop Adjustment Nut		2
93	JDP12-93	Washer		1
94	JDP12-94	Key	3x6	1
95	JDP12-95	Hub		1
96	JDP12-96	Self-Lock Nut		1
97	JDP12-97	Bowed Washer		1
98	JDP12-98	Receiver		1
99	JDP12-99	Self-Tapping Screw	ST2.2x6.5	4
100	TS-2284252	Pan Head Machine Screw	M4x25	1
101	JDP12-101	Rivet		4
102	JDP12-102	JET Nameplate		1

Index No	Part No	Description	Size	Qty
103	JDP12-103	Self-Tapping Screw	ST4.2x10	4
104	JDP12-104	Hinge		2
105	JDP12-105	Hinge Pin		2
106	JDP12-106	Wrench		1
107	JDP12-107	Spindle Pulley, Lower		1
108	JDP12-108	Spring Seat		1
109	JDP12-109	Motor Pulley Spring		1
110	JDP12-110	Spring Cover		1
111	JDP12-111	Belt	O-885	1
112	JDP12-112	Motor Pulley, Lower		1
113	JDP12-113	Spindle Pulley, Upper		1
114	JDP12-114	Retaining Ring	55	1
115	JDP12-115	Ball Bearing	61907ZZ / 6907ZZ	1
116	JDP12-116	Bracket		1
117	JDP12-117	Retaining Ring	24	1
118	JDP12-118	Retaining Ring	14	1
119	JDP12-119	Motor Pulley, Upper		1
120	JDP12-120	Power Cord		1
121	JDP12-121	Motor Cord		1
122	TS-152704	Hex Wrench	3mm	1
123	TS-152705	Hex Wrench	4mm	1
124	JDP12-124	Rack Collar		1
125	JDP12-125	Pin	Ø2.5x12	1
126	JDP12-126	Chuck Key Holder		1
127	JDP12-127	Cord Wrap		1
128	JDP12-128	Pulley Cover		1
129	JDP12-129	Drift Key		1
130	TS-1550011	Flat Washer	M3	4
131	TS-1540031	Hex Nut	M5	1
132	JDP12-132	Cover Clip		1
133	TS-1550031	Flat Washer	M5	1
134	JDP12-134	Tilt Scale		1
135	JDP12-135	Scale Indicator Bracket		1
136	JDP12-136	Speed Handle		1
137	TS-1540061	Hex Nut	M8	4
138	JDP12-138	Washer		1

# Assembly Drawing



# Wiring Diagram

