

Parts

Replacement Parts

Replacement parts are listed on the following pages. To order parts or reach our service department, call 1-800-274-6848 Monday through Friday (see our website for business hours, www.waltermeier.com). Having the Model Number and Serial Number of your machine available when you call will allow us to serve you quickly and accurately.

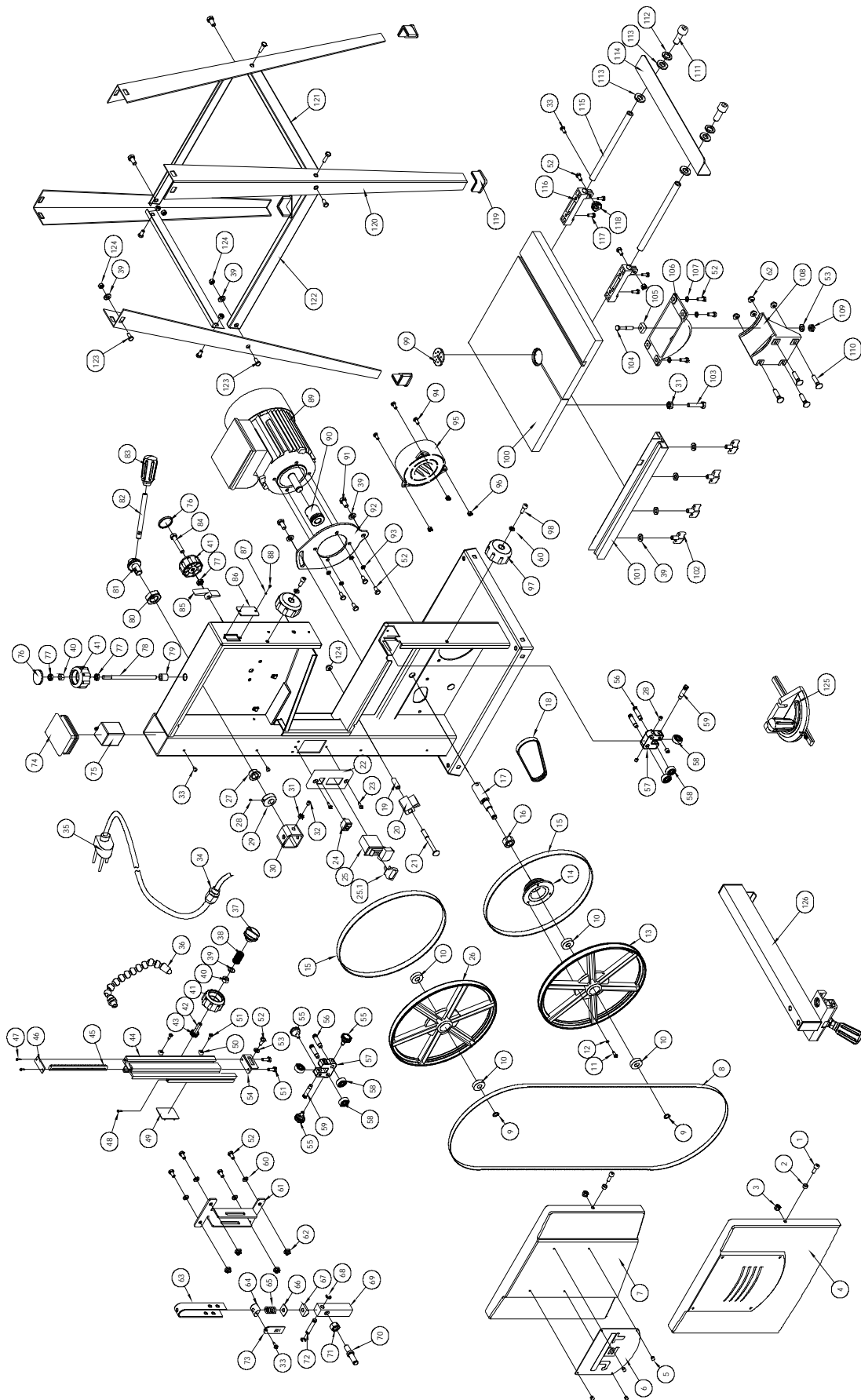
Parts List

| Index No. | Part No. | Description | Size | Qty |
|-----------|---------------|-------------------------|--------------------------|-----|
| 1 | TS-1503041 | Socket Head Cap Screw | M6x16 | 2 |
| 2 | JWBS10OS-2 | Spacer | | 2 |
| 3 | TS-1541021 | Nylon Insert Lock Nut | M6 | 2 |
| 4 | JWBS10OS-4 | Lower Door | | 1 |
| 5 | JWBS10OS-5 | Rivet | 2.5x5 | 4 |
| 6 | JWBS10OS-6 | JET Nameplate | | 1 |
| 7 | JWBS10OS-7 | Upper Door | | 1 |
| 8 | JWBS10OS-8 | Blade | 67.5 x .375 x .014, 6TPI | 1 |
| 9 | JWBS10OS-9 | Retaining Ring | 10 | 2 |
| 10 | BB-6000ZZ | Ball Bearing | 6000ZZ | 4 |
| 11 | TS-1533032 | Pan Head Machine Screw | M5x10 | 3 |
| 12 | TS-2361051 | Lock Washer | M5 | 3 |
| 13 | JWBS10OS-13 | Lower Wheel | | 1 |
| 14 | JWBS10OS-14 | Pulley | | 1 |
| 15 | JWBS10OS-15 | Tire | | 2 |
| 16 | JWBS10OS-16 | Nut | M20 | 1 |
| 17 | JWBS10OS-17 | Lower Wheel Shaft | | 1 |
| 18 | JWBS10OS-18 | Belt | | 1 |
| 19 | JWBS10OS-19 | Spacer Bushing | | 1 |
| 20 | JWBS10OS-20 | Brush | | 1 |
| 21 | JWBS10OS-21 | Carriage Bolt | M8x70 | 1 |
| 22 | JWBS10OS-22 | Switch Plate | | 1 |
| 23 | TS-2284121 | Flat Head Machine Screw | M4x12 | 2 |
| 24 | JWBS10OS-24 | LED Lamp Switch | | 1 |
| 25 | JWBS10OS-25 | Start/Stop Switch | | 1 |
| 25-1 | JWBS10OS-25-1 | Switch Safety Key | | 1 |
| 26 | JWBS10OS-26 | Upper Wheel | | 1 |
| 27 | JWBS10OS-27 | Sleeve | | 1 |
| 28 | TS-1523011 | Socket Set Screw | M6x6 | 5 |
| 29 | JWBS10OS-29 | Eccentric Block | | 1 |
| 30 | JWBS10OS-30 | Square Housing | | 1 |
| 31 | TS-1540041 | Hex Nut | M6 | 2 |
| 32 | TS-1523041 | Socket Set Screw | M6x12 | 1 |
| 33 | TS-2171012 | Pan Head Machine Screw | M4x6 | 10 |
| 34 | JWBS10OS-34 | Strain Relief | | 2 |
| 35 | JWBS10OS-35 | Cord with Plug | | 1 |
| 36 | JWBS10OS-36 | LED Lamp Assembly | | 1 |
| 37 | JWBS10OS-37 | Locking Knob | | 1 |
| 38 | JWBS10OS-38 | Spring | | 1 |
| 39 | TS-1550061 | Flat Washer | M8 | 23 |
| 40 | JWBS10OS-40 | Nut | | 2 |
| 41 | JWBS10OS-41 | Knob | | 3 |
| 42 | JWBS10OS-42 | Shaft | | 1 |
| 43 | JWBS10OS-43 | Gear | | 1 |
| 44 | JWBS10OS-44 | Blade Guard | | 1 |
| 45 | JWBS10OS-45 | Rack | | 1 |
| 46 | JWBS10OS-46 | Dust Cover | | 1 |
| 47 | JWBS10OS-47 | Self-Tapping Screw | ST3.5x9.5 | 2 |

| Index No. | Part No. | Description | Size | Qty |
|-----------|---------------|------------------------|------------------|-----|
| 48 | JWBS100S-48 | Self-Tapping Screw | ST2.2x6.5 | 1 |
| 49 | JWBS100S-49 | Sliding Plate | | 1 |
| 50 | JWBS100S-50 | Guide Block | | 2 |
| 51 | JWBS100S-51 | Self-Tapping Screw | ST4.2x13 | 4 |
| 52 | TS-1482021 | Hex Cap Screw | M6x12 | 11 |
| 53 | JWBS100S-53 | Washer | | 2 |
| 54 | JWBS100S-54 | Guide Seat | | 1 |
| 55 | JWBS100S-55 | Lock Knob | | 3 |
| 56 | JWBS100S-56 | Bearing Shaft | | 4 |
| 57 | JWBS100S-57 | Bearing Bracket | | 2 |
| 58 | JWBS100S-58 | Ball Bearing | 627ZZ | 6 |
| 59 | JWBS100S-59 | Bearing Shaft | | 2 |
| 60 | TS-1550041 | Flat Washer | M6 | 4 |
| 61 | JWBS100S-61 | Guide Plate | | 1 |
| 62 | JWBS100S-62 | Hex Flange Nut | M6 | 8 |
| 63 | JWBS100S-63 | U-Bracket | | 1 |
| 64 | JWBS100S-64 | Semi-Sphere Segment | | 1 |
| 65 | JWBS100S-65 | Spring | | 1 |
| 66 | JWBS100S-66 | Tension Scale Pointer | | 1 |
| 67 | JWBS100S-67 | Nut | | 1 |
| 68 | JWBS100S-68 | E-Clip | 6 | 2 |
| 69 | JWBS100S-69 | Upper Wheel Axis Seat | | 1 |
| 70 | JWBS100S-70 | Upper Wheel Shaft | | 1 |
| 71 | TS-1540071 | Hex Nut | M10 | 1 |
| 72 | JWBS100S-72 | Shaft | | 1 |
| 73 | JWBS100S-73 | Tension Scale | | 1 |
| 74 | JWBS100S-74 | Plug | | 1 |
| 75 | JWBS100S-75 | Voltage Adapter | | 1 |
| 76 | JWBS100S-76 | Knob Cover | | 1 |
| 77 | JWBS100S-77 | Hex Jam Nut | | 5 |
| 78 | JWBS100S-78 | Fastening Shaft | | 1 |
| 79 | JWBS100S-79 | Tension Sleeve | | 1 |
| 80 | JWBS100S-80 | Nut | M14x1.5P | 1 |
| 81 | JWBS100S-81 | Hub | | 1 |
| 82 | JWBS100S-82 | Handle | | 1 |
| 83 | JWBS100S-83 | Handle Grip | | 1 |
| 84 | TS-1490081 | Hex Cap Screw | M8x45 | 1 |
| 85 | JWBS100S-85 | Wing Nut | | 1 |
| 86 | JWBS100S-86 | Blade Tracking Window | | 1 |
| 87 | TS-1550021 | Flat Washer | M4 | 2 |
| 88 | JWBS100S-88 | Pan Head Machine Screw | M4x5 | 2 |
| 89 | JWBS100S-89 | Motor | 1/2HP, 1Ph, 115V | 1 |
| | JWBS100S-89-1 | Capacitor (not shown) | 25µF/250V | 1 |
| 90 | JWBS100S-90 | Motor Pulley | | 1 |
| 91 | TS-1490021 | Hex Cap Screw | M8x16 | 2 |
| 92 | JWBS100S-92 | Motor Mount | | 1 |
| 93 | TS-2361061 | Lock Washer | M6 | 4 |
| 94 | TS-1533042 | Pan Head Machine Screw | M5x12 | 3 |
| 95 | JWBS100S-95 | Dust Chute | | 1 |
| 96 | TS-1540031 | Hex Nut | M5 | 3 |
| 97 | JWBS100S-97 | Door Lock Knob | | 2 |
| 98 | TS-1503061 | Socket Head Cap Screw | M6x25 | 2 |
| 99 | JWBS100S-99 | Table Insert | | 1 |
| 100 | JWBS100S-100 | Table | | 1 |
| 101 | JWBS100S-101 | Fence Guide Rail | | 1 |
| 102 | JWBS100S-102 | Wing Screw | | 4 |
| 103 | TS-1482071 | Hex Cap Screw | M6x35 | 1 |
| 104 | JWBS100S-104 | Carriage Bolt | M6x30 | 1 |
| 105 | JWBS100S-105 | Slide Block | | 1 |
| 106 | JWBS100S-106 | Trunion | | 1 |

| Index No. | Part No. | Description | Size | Qty |
|-----------|--------------|--|--------|-----|
| 107 | JWBS10OS-107 | External Tooth Lock Washer | M6 | 4 |
| 108 | JWBS10OS-108 | Support Bracket | | 1 |
| 109 | JWBS10OS-109 | Knob | | 1 |
| 110 | JWBS10OS-110 | Carriage Bolt | M6x16 | 4 |
| 111 | TS-1505011 | Socket Head Cap Screw | M10x16 | 2 |
| 112 | TS-1551071 | Lock Washer | M10 | 2 |
| 113 | TS-1550071 | Flat Washer | M10 | 4 |
| 114 | JWBS10OS-114 | Extension Wing | | 1 |
| 115 | JWBS10OS-115 | Extension Rod | | 2 |
| 116 | JWBS10OS-116 | Extension Bracket | | 2 |
| 117 | TS-1533032 | Pan Head Machine Screw | M5x10 | 4 |
| 118 | JWBS10OS-118 | Lock Knob | | 1 |
| 119 | JWBS10OS-119 | Rubber Foot | | 4 |
| 120 | JWBS10OS-120 | Stand Leg | | 4 |
| 121 | JWBS10OS-121 | Short Support Plate | | 2 |
| 122 | JWBS10OS-122 | Long Support Plate | | 2 |
| 123 | JWBS10OS-123 | Carriage Bolt | M8x16 | 16 |
| 124 | TS-1540061 | Hex Nut | M8 | 16 |
| 125 | JWBS10OS-125 | Miter Gauge | | 1 |
| 126 | JWBS10OS-126 | Complete Fence Assembly | | 1 |
| | JWBS10OS-HB | Hardware Bag (see page 7 for contents) | | |

Assembly Drawing



Electrical Connections

1/2HP, 1PH, 115V

Band Saw Model No.: JWBS-100s

wiring diagram-RBS230C.jpg (1584x1223x16M jpeg)

