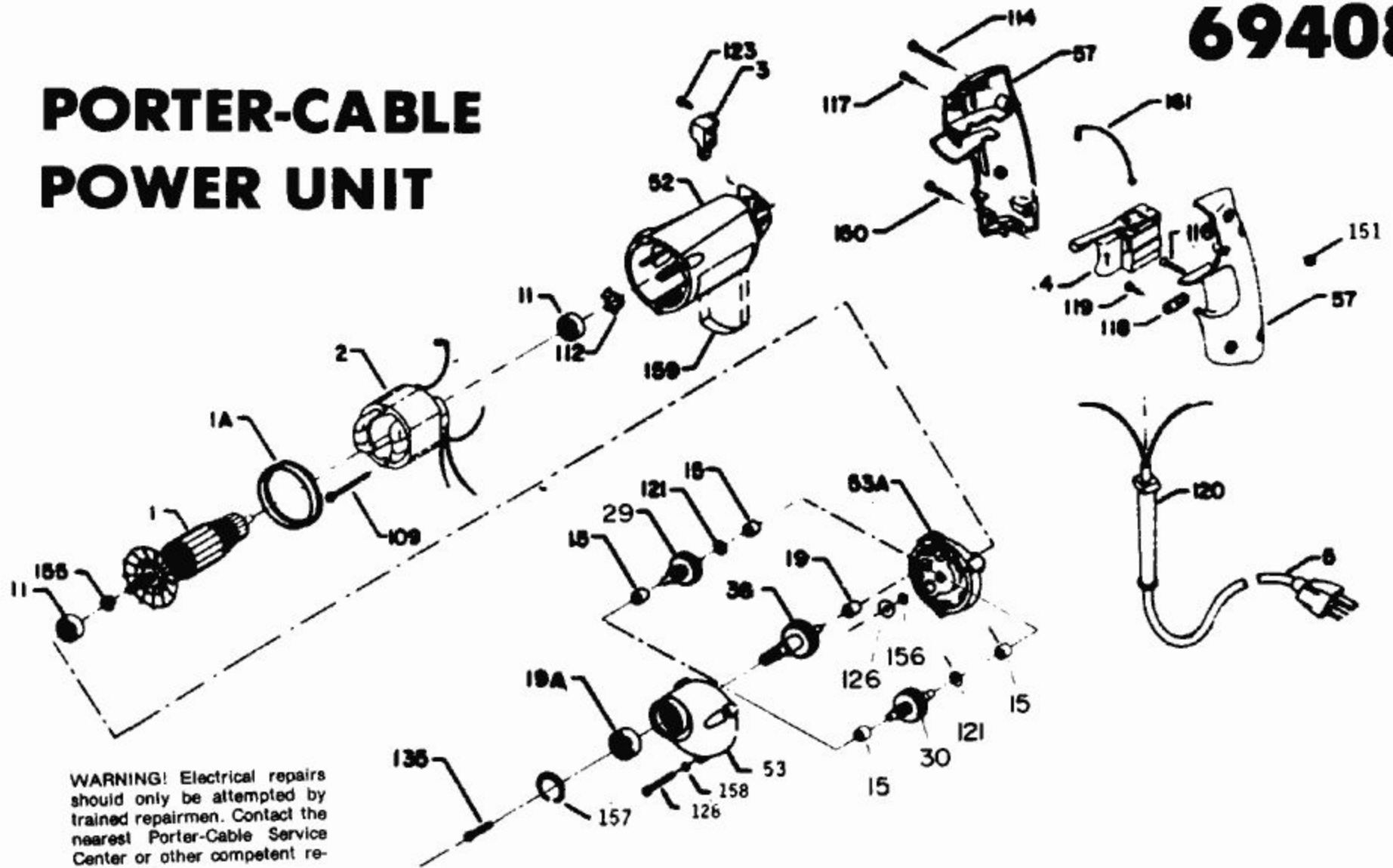


# PORTER-CABLE POWER UNIT



**WARNING!** Electrical repairs should only be attempted by trained repairmen. Contact the nearest Porter-Cable Service Center or other competent repair center.

| Ref. No. | Part No. | Description                                       | Ref. No. | Part No. | Description        |
|----------|----------|---|----------|----------|--------------------|
| 1        | 865735   | Armature  | 120      | 810882   | Strain Reliever    |
| 1A       | 811350   | Baffle  | 121      | 848741   | Washer             |
| 2        | 865736   | Field   | 123      | 860756   | Screw              |
| 3        | 865941   | Brush and Holder Assembly                         | 126      | 852714   | Slinger            |
| 4        | 692210   | Switch  | 128      | 865682   | Screw              |
| 5        | 865619   | Cord  | 135      | 867938   | Chuck Screw        |
| 11       | 855284   | Armature Bearing                                  | 150      | 841644   | Screw              |
| 15       | 848131   | Needle Bearing                                    | 151      | 828841   | Nut                |
| 19       | 839837   | Needle Bearing                                    | 155      | 847564   | Snap Ring          |
| 19A      | 855206   | Spindle Bearing                                   | 156      | 802851   | O-Ring             |
| 29       | 865273   | Idler Assembly                                    | 157      | 859769   | Snap Ring          |
| 30       | 847654   | Idler Assembly                                    | 158      | 802648   | Lock Washer        |
| 38       | 691851   | Spindle Assembly                                  | 159      | 861399   | Direction Plate    |
| 52       | 865245   | Motor Housing                                     | 161      | 865774   | Lead Assembly      |
| 53       | 691852   | Gear Housing, Incl: Ref. 15                       | *        | 811292   | Fan                |
| 53A      | 868599   | Intermediate Plate, Incl:<br>Ref. 11, 15, 19      | *        | 801945   | Lubricant (5½ oz.) |
| 57       | 868293   | Handle Set, Incl: Ref.<br>114, 116, 117, 150, 151 | *        | 801946   | Lubricant (4 lbs.) |
| 109      | 860902   | Field Screw                                       |          |          |                    |
| 112      | 842610   | Load Spring                                       |          |          |                    |
| 114      | 865643   | Screw   |          |          |                    |
| 116      | 859384   | Screw   |          |          |                    |
| 117      | 866340   | Screw   |          |          |                    |
| 118      | 861434   | Cord Clamp  |          |          |                    |
| 119      | 859227   | Screw   |          |          |                    |