



SERVICE PARTS LIST

BULLETIN NO.
54-44-0660

SPECIFY CATALOG NO. AND SERIAL NO. WHEN ORDERING PARTS			REVISED BULLETIN	DATE
POWER UNIT				July 2007
CATALOG NO.	6853	SERIAL NUMBER PREFIX & BREAK	B33A	
			WIRING INSTRUCTION 58-01-1805	

EXAMPLE:



Component Parts (Small #)
Are Included When Ordering
The Assembly (Large #).

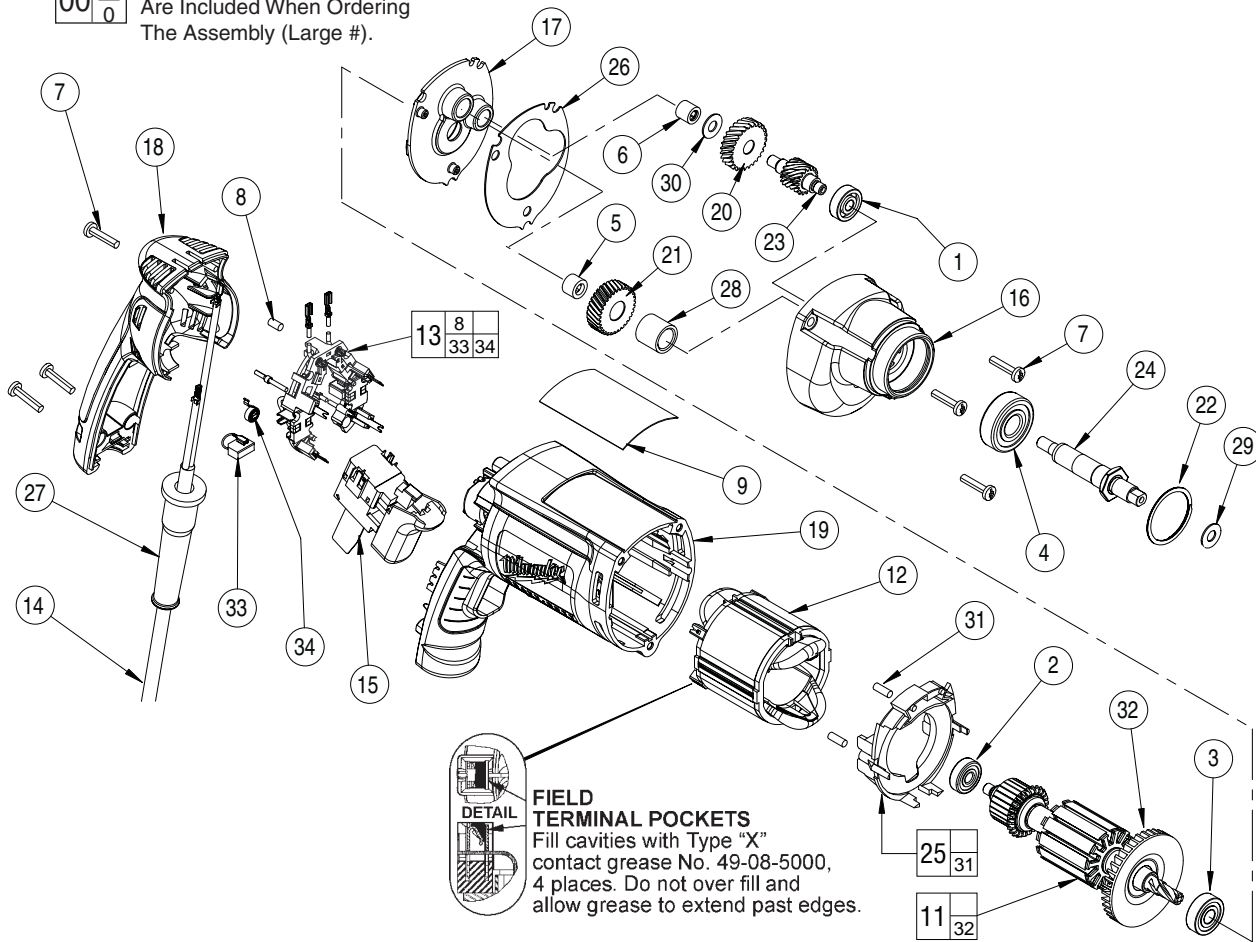


FIG.	PART NO.	DESCRIPTION OF PART	NO. REQ.
1	02-04-0640	Ball Bearing	(1)
2	02-04-0645	Ball Bearing	(1)
3	02-04-0852	Ball Bearing	(1)
4	02-04-1229	Ball Bearing	(1)
5	02-50-1611	Needle Bearing	(1)
6	02-50-2400	Needle Bearing	(1)
7	06-82-7275	7-18 x .75 Slotted Plastite T-20	(6)
8	45-30-0035	Slug	(1)
9	12-99-2665	Service Nameplate	(1)
11	16-10-2210	Armature Assembly	(1)
12	18-07-2206	Field	(1)
13	22-18-1210	Brush Card Assembly	(1)
14	22-64-6510	Cord Set	(1)
15	23-66-2587	Switch	(1)
16	28-14-2393	Gearcase	(1)
17	28-28-2320	Diaphragm	(1)
18	31-15-2010	Handle Halve	(1)
19	31-50-2010	Motor Housing	(1)
20	32-40-0100	Intermediate Gear	(1)
21	32-75-0115	Spindle gear	(1)
22	34-80-2300	Retaining Ring	(1)
23	36-66-0125	Intermediate Pinion	(1)
24	38-50-5753	Spindle	(1)
25	42-14-0450	Baffle Assembly	(1)
26	43-44-0985	Gasket	(1)
27	44-76-0210	Cord Protector	(1)
28	45-36-1095	Spindle Spacer	(1)
★ 29	45-88-0395	Thrust Washer	(1)
30	45-88-7990	Thrust Washer	(1)
31	45-30-0030	Slug	(2)
32	22-84-0845	Fan	(1)
33	22-18-1310	Brush Assembly	(2)
34	23-52-1610	Brush Spring	(2)

FIG. 16 LUBRICATION:
Place 5 grams (3/16 oz.) of Type "Y" Grease, No. 49-08-5270 on top of the inserted intermediate ball bearing (1) and on the intermediate pinion (23). After inserting the balance of the gearing mechanism (20, 30, 28 and 21), place 13 grams (1/2 oz.) of "Y" Grease at the armature pinion centerline in the gearcase and fill to the top of the intermediate gear (20). Grease must contact at least 25% of the intermediate gear teeth.

5,6,17 Before assembly, lightly coat all press fit areas with lightweight spindle oil.

FIG. 5,6,17 NOTES:
Needle bearings to be pressed flush to .010 under flush from the end which has the vendors identification.