



SERVICE PARTS LIST

BULLETIN NO.
54-44-0508

SPECIFY CATALOG NO. AND SERIAL NO. WHEN ORDERING PARTS		REVISED BULLETIN 54-44-0507	DATE Nov. 2004
18 GAUGE SWIVEL HEAD SHEAR			
CATALOG NO. 6850	STARTING SERIAL NO. 550C / 550D	WIRING INSTRUCTION 58-01-0024	

EXAMPLE:

00
0

Component Parts (Small #)
Are Included When Ordering
The Assembly (Large #).

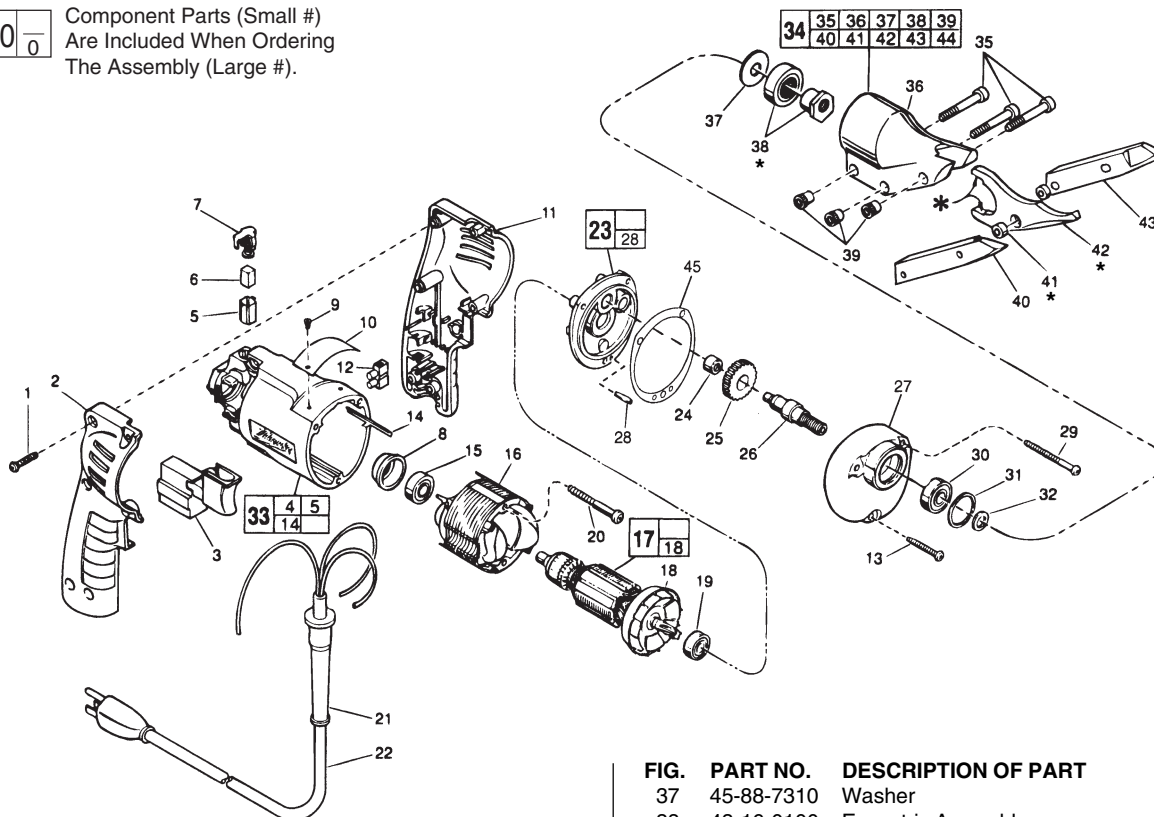


FIG.	PART NO.	DESCRIPTION OF PART	NO. REQ.
	1	06-82-7284 8-16 x 3/4" Pan Hd. Slit. Plas. T-20	(6)
	2	31-44-1705 Right Handle Half	(1)
★	3	23-66-1253 Speed Control Switch	(1)
	4	23-94-6225 Ground Wire Assembly (Not Shown)	(1)
	5	22-20-0830 Brush Tube	(2)
	6	22-16-0275 Carbon Brush	(2)
	7	23-52-1560 Brush Spring Assembly	(2)
	8	22-72-0100 Bearing Cup	(1)
	9	06-72-1720 Nameplate Rivet	(2)
	10	12-99-0850 Service Nameplate	(1)
	11	31-44-1700 Left Handle Half	(1)
	12	22-56-0456 Terminal Block	(1)
	13	06-82-7308 7-18 x 1-1/8" Pan Hd. Slit. Plast. T-20	(1)
	14	44-60-0530 Ground Pin	(1)
	15	02-04-0645 Ball Bearing	(1)
	16	18-11-0060 120 V Field	(1)
	17	16-10-0440 120 V D.I. Armature	(1)
	18	22-84-0760 Fan Assembly	(1)
★	19	02-04-0851 Ball Bearing	(1)
	20	06-82-7393 7-18 x 2" Pan Hd. Slit. Plast. T-20	(2)
	21	44-76-0210 Cord Protector	(1)
	22	22-64-3180 Cord Set	(1)
★	23	14-13-0525 Diaphragm Assembly	(1)
	24	02-50-1620 Needle Bearing	(1)
	25	32-75-3260 Spindle Gear	(1)
	26	38-50-5671 Reversing Spindle	(1)
★	27	28-14-1840 Gear Case	(1)
★	28	06-65-0880 Ground Pin	(1)
	29	06-82-7344 7-18 x 1-1/2" Pan Hd. Slit. Plast. T-20	(2)
	30	02-04-1020 Ball Bearing	(1)
	31	34-80-1400 Retaining Ring	(1)
	32	45-88-7940 Washer	(1)
	33	14-38-0601 Motor Housing Assembly	(1)
	34	48-08-0500 Shear Head Assy. (Includes 35 thru 44)	(1)
	35	06-75-2115 10-24 x 1-1/4 Skt. Hd. Cap Screw	(3)
	36	43-76-0400 Shear Housing	(1)

FIG.	PART NO.	DESCRIPTION OF PART	NO. REQ.
	37	45-88-7310 Washer	(1)
	38	43-16-0100 Eccentric Assembly	(1)
	39	43-84-0460 Knurled Insert	(3)
	40	48-44-0170 Blade - Right Side	(1)
	41	42-40-0520 Bushing	(2)
	42	48-44-0150 Blade - Center	(1)
	43	48-44-0160 Blade - Left Side	(1)
	44	49-96-0070 5/32 Hex Allen Wrench (Not Shown)	(1)
★	45	43-44-0925 Gasket	(1)

FIG. LUBRICATION:

27 Use 1-1/8 Oz. of Type "E" Grease, No. 49-08-4122, in Gear Case.

★ 34 Lubricate flats, pivot hole and sides of center blade (42), eccentric assembly (38) and bushing (41) with a dab of "E" grease during assembly.

FIG. NOTES

- 1 Torque to 18-28 In./Lbs.
- 13,20,29 Torque to 15-20 In./Lbs.
- 8 Place in motor housing before inserting armature.
- 24 Press flush to casting surface.
- 15,19 Seal towards armature.
- 30 Seal towards retaining ring.

MILWAUKEE ELECTRIC TOOL CORPORATION
13135 W. LISBON RD., BROOKFIELD, WI 53005