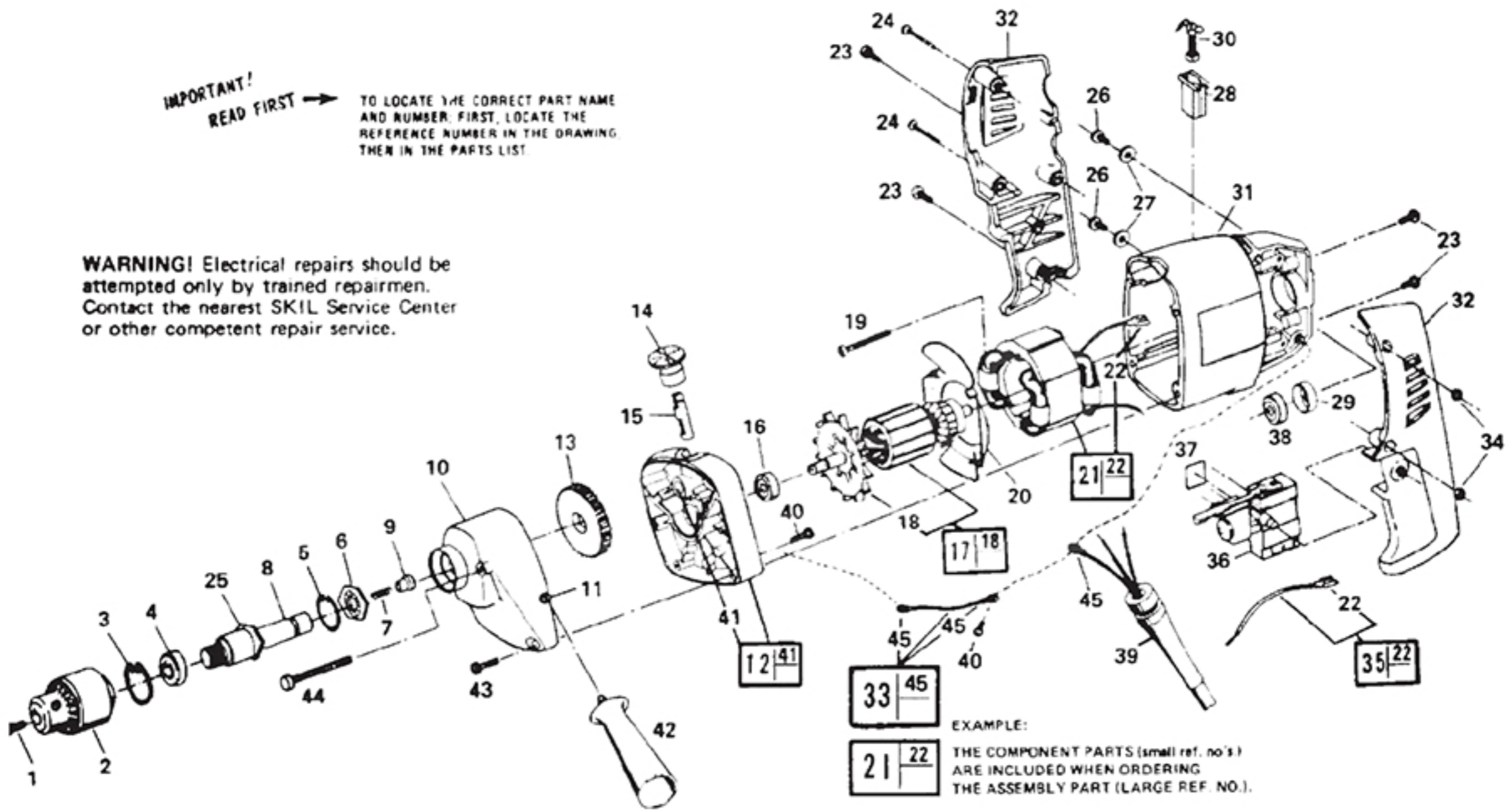


IMPORTANT!
READ FIRST →

TO LOCATE THE CORRECT PART NAME AND NUMBER, FIRST, LOCATE THE REFERENCE NUMBER IN THE DRAWING, THEN IN THE PARTS LIST.

WARNING! Electrical repairs should be attempted only by trained repairmen. Contact the nearest SKIL Service Center or other competent repair service.



33	45
----	----

21	22
----	----

EXAMPLE:
 THE COMPONENT PARTS (small ref. no's) ARE INCLUDED WHEN ORDERING THE ASSEMBLY PART (LARGE REF. NO.).